



MILLS CATTLE^{co.}

PRODUCTION BULL SALE
ST. ONGE LIVESTOCK | ST. ONGE, SD
APRIL 12, 2024 | 1 P.M.

SELLING REGISTERED BLACK ANGUS

Dear Friends and Neighbors,

Welcome to the Mills Cattle Company annual production sale. Please join us at 1:00 p.m. on Friday, April 12, 2024, at St. Onge Livestock, St. Onge, SD.

We are happy to again be working with Justin and Brooke Tupper and their crew at St. Onge Livestock for our Production Sale. Last year's sale more than exceeded our expectations, and we were continually reminded of how blessed we are to live and work with people in the cattle business.

We are striving to use the best genetics we can in our herd in order to offer you our best, not only in the AI sires we use but also in the herd bulls we purchase. The bulls we buy come out of programs that emphasize maternal excellence and balanced trait genetics. The females retained will affect the profit and productivity of the herd long after the bull is replaced. This compels us to place a considerable amount of emphasis on the bottom side of the pedigree.

For your consideration in this year's sale we are offering bulls we believe will sire calves that will come easy, but will grow quickly once they're on the ground. In our matings, we strive to maintain a balance between calving ease, growth, maternal traits and carcass merit. Our aim is for you, as the producer, to have a selection of bulls that will help you reach your cow herd goals.

We invite you to view the videos on our website, www.millscattle.com, and can also be accessed by scanning the QR Code throughout the catalog. You can also find us on [fb@millscattlecowyo](https://www.facebook.com/millscattlecowyo). The cattle will be available for viewing at St. Onge Livestock on Thursday, April 11th and the morning of the sale. We would really enjoy spending time visiting with you, showing you the bulls here and getting to know more about your operation if you are ever around Hulett.

We want to thank you in advance for taking the time to come to the sale and for your consideration of the bulls in this year's offering. Words fall short when trying to describe our appreciation for our returning customers and friends. Thank you. We also look forward to making new friendships, and working hard to earn the business of those who may be considering purchasing a bull from us for the first time. As always, if you have any questions about the bulls or our program, please don't hesitate to call us or stop by.

Please join us for lunch at the sale barn prior to the sale!

- Doug and Dena





PRODUCTION BULL SALE

04.12.2024

AUCTIONEER:

Justin Tupper.....605.680.0259

ST ONGE LIVESTOCK SALES STAFF:

Ray Pepin605.892.5072

Cory Tupper.....605.569.3589

Scott Crowser605.645.2654

SALE LOCATION:

St. Onge Livestock, St. Onge, SD

MCC SALE DAY PHONES:

Doug Mills.....307.756.2030

Dena Mills.....307.756.2648

Bryson Mills.....307.756.2028

HERD HEALTH:

All cattle are eligible for shipment anywhere in the United States, although some states may require additional testing prior to shipment. All animals have been genomically tested for parentage verification. DNA testing has been performed on all animals in our herd, using the added benefits of Genomic-Enhanced EPDs, and have tested free of all known genetic defects. The bulls are on a complete vaccination and mineral program as recommended by our veterinarian.

BREEDING SOUNDNESS:

All bulls will have passed a breeding soundness exam guaranteeing them sound and fertile at the time of delivery. They will sell with proper health papers for interstate shipment.

GUARANTEE:

Bulls are guaranteed to be sound, healthy breeders for the first breeding season. The breeding season is defined as the first 90 days from turn-out of the bull. If a bull is unable to breed, the seller will (at the seller's discretion) provide either a replacement bull or give credit in the next sale equaling the sales price, less salvage value of the bull. This guarantee does not include buyer negligence in the handling of the bull. All injured bulls must be diagnosed by a veterinarian. Please notify us as soon as possible if an injury should occur and prior to the bull being sold for salvage. All claims must be made by September 1, 2024.

VOLUME DISCOUNT:

A 3% discount will be provided on 3 or more bulls.

TERMS OF THE SALE:

Cattle will sell under the suggested Terms and Conditions of the American Angus Association (http://www.angus.org/Pub/suggested_sale_terms.pdf) Terms of the sale are cash. Payment for cattle is expected to be in full at the conclusion of the sale unless arrangements have been made prior to the sale.

DELIVERY AND FEEDING:

Mills Cattle Company will deliver all bulls free of charge up to 300 miles and then at cost. Please leave detailed delivery instructions at the time of buyer registration with the St. Onge Livestock Office.

We will deduct \$50 off each bull taken home on sale day. We are happy to continue to feed the bulls past sale date at cost.

RETAINED INTEREST:

Mills Cattle Company will retain 1/3 semen interest on all bulls sold, unless otherwise specified.

VIEWING OF THE SALE OFFERING:

The cattle are available to view any time prior to the sale in Hulett. Once they are hauled to St. Onge Livestock, they will be available for viewing anytime starting Thursday April 11th. Sale videos will be posted to the website, millsattle.com, around March 11th. The photos and videos were taken March 1st.

ANNOUNCEMENTS:

Announcements from the sale block take precedence over any printed material.

LIABILITY:

All persons attending or viewing the bulls prior to the sale, do so at their own risk and assume all liability for accidents or injuries which may occur.

If you would like to be able to bid online, please go to cattleusa.com and log in or create an account to view and register to bid. Click on St. Onge Livestock in the live auction listings.



THE HD50K™ FOR ANGUS



HD50K™ FOR ANGUS IS A GENOTYPING TECHNOLOGY FROM ZOETIS DESIGNED FOR ANGUS SEEDSTOCK PRODUCERS AND FULLY ENDORSED BY THE AMERICAN ANGUS ASSOCIATION AND ANGUS GENETICS, INC.

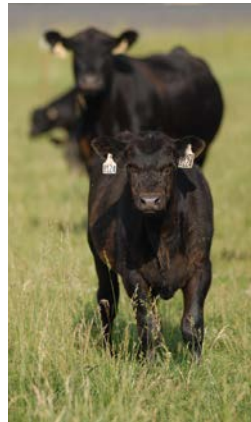
HD50K™ for Angus replaces i50K™ and the previous version of HD 50K™, and represents an advancement in Angus genotyping technology.

ZOETIS PROVIDES COMPREHENSIVE GENETIC AND MANAGEMENT SOLUTIONS FOR BEEF PRODUCERS:

- 17 staff Ph.D. geneticists driving cutting edge research and development as well as field and customer support across the livestock business
- First to market with novel wellness traits in dairy cows and calves
- Development of innovative decision support tools
- Unmatched technical support and customer service

SELECT, MATE AND MARKET ANGUS SEEDSTOCK WITH CONFIDENCE:

- Commercial bull buyers increasingly request GE-EPDs
- HD50K™ for Angus tested bull batteries enable Sire Match for GeneMax™ Advantage™ tested heifers
- Reduce selection and breeding mistakes—with HD50K™ for Angus



HD50K™ for Angus is available to American Angus Association members through Angus Genetics, Inc. and may be purchased online through the AAA Login site.

HD50K™ for Angus: The people, the products, and services you have always relied on.

All trademarks are the property of Zoetis Services LLC or a related company or a licensor unless otherwise noted. GeneMax is a registered trademark of Angus Genetics, Inc. ©2019 Zoetis Services LLC. All rights reserved. 50K-00024

Don't buy an imposter.

Not all "Angus" bulls are **REGISTERED** Angus bulls.


If you see this logo in conjunction with an individual animal or group of animals, you know that that animal is registered with the American Angus Association and backed by the power of **data, programs and pedigrees** of the Association.

Invest wisely in those that carry the **Powered By Angus** logo.



Look for the **REGISTRATION NUMBER**.

For more information on the Powered By Angus program, visit: Angus.org/PBA.



ABOVE AVERAGE GOALS REQUIRE TARGETED BULLS


Aim High

The Targeting the Brand™ logo highlights registered Angus bulls with greater genetic potential to produce calves that meet the most challenging specifications of the *Certified Angus Beef®* brand.

Only 1 in 4 non-parent Angus bulls qualify.

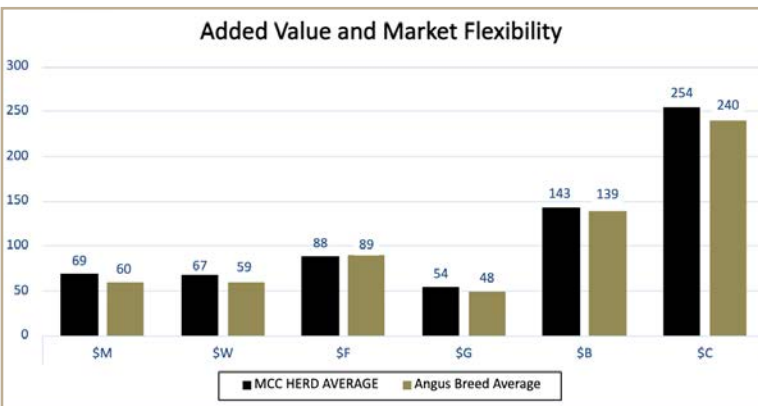
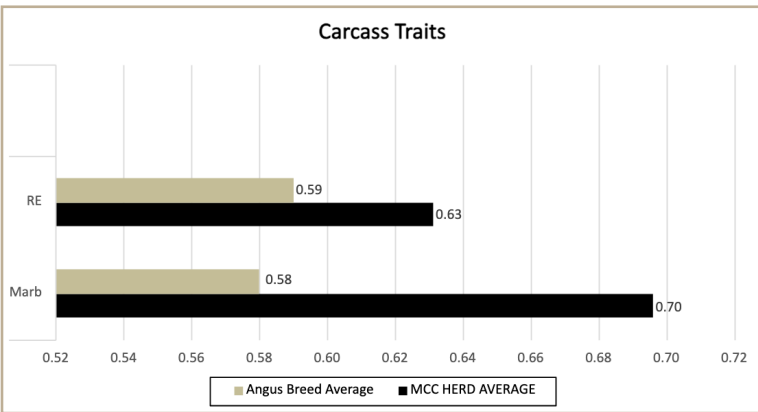
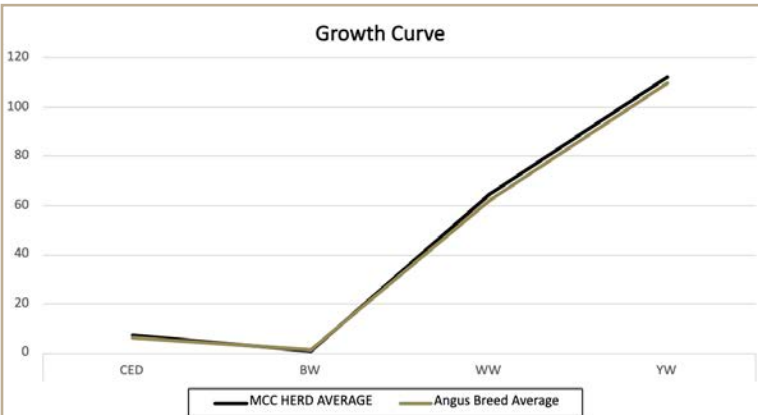
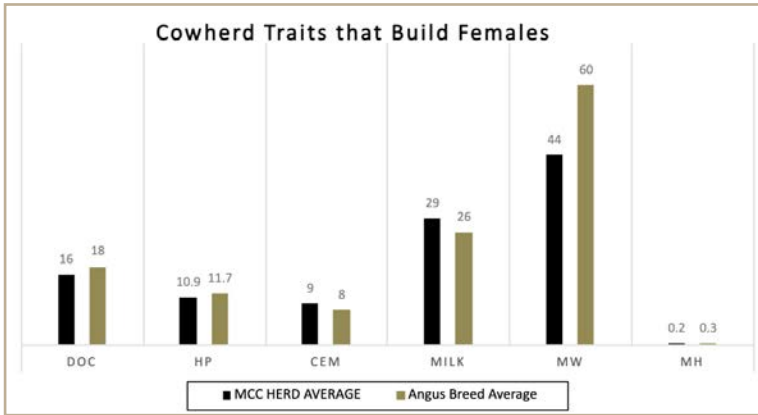
Minimum Genetic Requirements

Marbling EPD (Marb)	+0.65
Dollar Grid Carcass Index (\$G)	+55.0



For more information on Targeting the Brand™ visit CABcattle.com.

HOW OUR HERD COMPARES TO ANGUS BREED AVERAGES



TESTING AND GENOMIC ENHANCED EPDS

All of our cattle have been genomically tested. The bulls in this sales catalog are no exception. At branding time, a tissue sample is sent in to Angus Genetics, Inc. (AGI) where information provided through the animal's DNA is combined with their EPD to provide the most accurate predictor of the animal's genetic potential. This is referred to as a Genomic-Enhanced EPD (GE-EPD).

When a producer buys a bull that has GE-EPDs, it is as if the animal has already sired between 10 to 36 calves, depending on the trait. The use of the EPD does not change, it simply increases its accuracy.

For us, it is one more tool to help our customers get the most accurate information available to help in the decision-making process.

"It is also important to note that phenotypic measurements collected by breeders such as birth, weaning, yearling weights, etc., are also an extremely important part of the equation for animal selection. These also serve to improve EPDs and their accuracy."

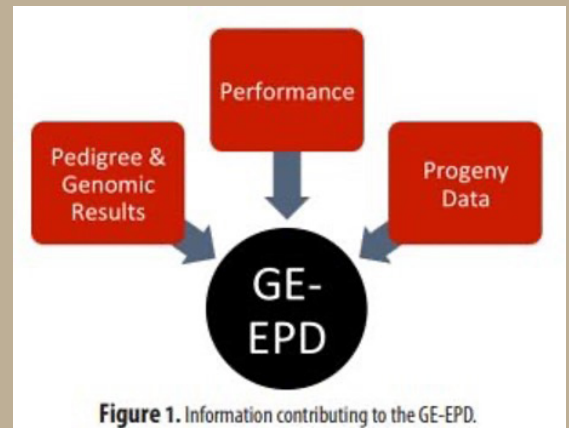


Figure 1. Information contributing to the GE-EPD.

Source: American Angus Association

	CED	BW	WW	YW	RADG	DMI	YH	SC	Doc	Claw	Angle	PAP	HS	HP	CEM	Milk	MW	MH	\$EN	CW	Marb	RE	Fat	\$M	\$W	\$F	\$G	\$B	\$C
Our Herd Average:	8	1.0	64	110	0.2	0.8	0.3	0.86	18	0.48	0.46	1.35	0.6	10.2	10	28	42	0.1	-11	44	0.66	0.62	0.021	69	65	86	53	139	249
Current Dams Average for Breed:	6	1.3	56	98	0.23	0.78	0.5	0.76	16	0.5	0.49	1.16	0.54	11.4	8	26	50	0.3	-13	39	0.53	0.51	0.012	59	52	81	45	128	224

Reference Sires



HOFFMAN THEDFORD

Thedford combines style, extension, athleticism, muscle expression and performance sure to be noticed in his sons. With the phenotypic excellence of his dam, we look for his daughters to definitely make their mark.

CED +13 | BW +.8 | WW +71 | YW +141 | Milk +29 | Marb +.57 | REA +.98 | \$B +188 | \$M +75 | \$C +319

BAR R JET BLACK 5063 X HA RITO LADY 3839

AAA 19820180



SITZ RESILIENT 10208

Resilient offers outstanding maternal design, as well as good growth and end-product merit. He is wide-based, athletic and free moving. We look for him to add value on the maternal side while creating sons with a herd bull presence.

CED +7 | BW +.6 | WW +75 | YW +133 | Milk +23 | Marb +.99 | REA +.57 | \$B +157 | \$M +80 | \$C +271

SITZ STELLAR 726D X SITZ MISS BURGESS 1856

AAA 19057457



S A V RAINFALL 6846

Rainfall sires added length, soundness and unmistakable herd bull presence in his sons. His daughters are definitely going to make their mark. They are as deep-bodied, easy fleshing and highly maternal as you can make them.

CED +7 | BW +.4 | WW +56 | YW +108 | Milk +26 | Marb +.72 | REA +.70 | \$B +135 | \$M +80 | \$C +255

COLEMAN CHARLO 0256 X S A V BLACKCAP MAY 4136

AAA 18578963

Reference Sires



POSS RAWHIDE

Rawhide's genetic excellence, index merit and attractive design fuses together to create a sire built for the stockman. We look for him to move our cowherd forward in nearly every trait, while maintaining a moderate stature.

CED +12 | BW -.3 | WW +84 | YW +137 | Milk +28 | Marb +.97 | REA +.75 | \$B +197 | \$M +61 | \$C +317

POSS MAVERICK X POSS BLUEBLOOD 6502

AAA 19416968



MUSGRAVE STUNNER 2022

Stunner's depth of body, powerful hip and muscle shape is one-of-a-kind. He is easy fleshing with a wide base and wide top. We look for him to add incredible maternal value to his progeny. He really stamps his calves with a distinct look, and we're excited to offer his first sons this year.

Semen Available

CED +9 | BW -.5 | WW +63 | YW +107 | Milk +31 | Marb +.65 | REA +.79 | \$B +156 | \$M +82 | \$C +284

MUSGRAVE 316 STUNNER X MILL BRAE IDENT BLACKCAP6007 AAA 19827663



MCC BOOMERANG 7095

Boomerang is continuing to make a mark on our herd in the females that we have retained. He is a carcass and index improver, and while his daughters have that distinct angus look, his sons rise to the top of the pen when sale day rolls around. His fleshing ability is outstanding and he is about as docile as you can make one. *Semen Available*

CED +10 | BW +1.0 | WW +73 | YW +119 | Milk +28 | Marb +1.17 | REA +1.00 | \$B +180 | \$M +90 | \$C +323

CONNELY CONFIDENCE PLUS X MCC SUPERMAMA 3046

AAA 19000827

American Angus Association \$Value Indexes



Dollar value indexes, or **\$Values**, are a tool used to select for several traits at once based on a specific breeding objective. An economic index approach takes into account genetic and economic values as well as the relationships between traits to select for profit.

Maternal Weaned Calf Value (\$M), an index expressed in dollars per head, predicts profitability differences in progeny due to genetics from conception to weaning. Increased selection pressure on \$M aims to decrease overall mature cow size and improve foot structure and fertility while maintaining weaning weights consistent with today's production.

Weaned Calf Value (\$W), an index expressed in dollars per head, provides the expected difference in future progeny preweaning performance from birth to weaning. Over time, increased selection pressure on \$W will increase weaning and maternal milk traits while also continuing to increase mature cow size.

Feedlot Value (\$F), an index expressed in dollars per head, is the expected average difference in future progeny performance for postweaning merit compared to progeny of other sires. The underlying objective assumes commercial producers will retain ownership of cattle through the feedlot phase and sell fed cattle on a carcass weight basis with no considerations of premiums or discounts for quality and yield grade.

Grid Value (\$G), an index expressed in dollars per carcass, is the expected average difference in future progeny performance for carcass grid merit, including quality and yield grade attributes, compared to progeny of other sires.

Beef Value (\$B), an index expressed in dollars per carcass, facilitates simultaneous multi-trait genetic selection for feedlot and carcass merit. \$B represents the expected average differences in the progeny postweaning performance and carcass value compared to progeny of other sires. This index assumes commercial producers wean all male and female progeny, retain ownership of these animals through the feedlot phase and market these animals on a quality-based carcass grid.

Combined Value (\$C), an index expressed in dollars per head, includes all traits that make up both \$M and \$B with the objective that commercial producers will replace 20% of their breeding females per year with replacement heifers retained within their own herd. The remaining cull heifer and steer progeny are then assumed to be sent to the feedlot where the producers retain ownership of those cattle and eventually sell them on a quality-based carcass merit grid.

TRAIT	EPDS DIRECTLY INCORPORATED INTO EACH \$VALUE					
	MATERNAL		TERMINAL			
	\$M	\$W	\$F	\$G	\$B	\$C
CED	✓					✓
BW		✓				✓
WW	✓	✓				✓
YW			✓		✓	✓
CEM	✓					✓
Milk	✓	✓				✓
MW	✓	✓				✓
DOC	✓					✓
HP	✓					✓
Claw	✓					✓
Angle	✓					✓
DMI			✓		✓	✓
CW			✓	✓	✓	✓
RE				✓	✓	✓
Marb				✓	✓	✓
Fat				✓	✓	✓

American Angus Association Selection Tools

Expected Progeny Difference (EPD), is the prediction of how future progeny of each animal are expected to perform relative to the progeny of other animals listed in the database. EPDs are expressed in units of measure for the trait, plus or minus. Interim EPDs may appear on young animals when their performance has yet to be incorporated into the American Angus Association National Cattle Evaluation (NCE) procedures. This EPD will be preceded by an "I", and may or may not include the animal's own performance record for a particular trait, depending on its availability, appropriate contemporary grouping, or data edits needed for NCE.

Accuracy (ACC), is the reliability that can be placed on the EPD. An accuracy of close to 1.0 indicates higher reliability. Accuracy is impacted by the number of progeny and ancestral records included in the analysis.

Calving Ease Direct (CED), is expressed as a difference in percentage of unassisted births, with a higher value indicating greater calving ease in first-calf heifers. It predicts the average difference in ease with which a sire's calves will be born when he is bred to first-calf heifers.

Birth Weight (BW), expressed in pounds, is a predictor of a sire's ability to transmit birth weight to his progeny compared to that of other sires.

Weaning Weight (WW), expressed in pounds, is a predictor of a sire's ability to transmit weaning growth to his progeny compared to that of other sires.

Residual Average Daily Gain (RADG), feed efficiency expressed in pounds per day, is a predictor of a sire's genetic ability for postweaning gain in future progeny compared to that of other sires, given a constant amount of feed consumed.

Yearling Weight (YW), expressed in pounds, is a predictor of a sire's ability to transmit yearling growth to his progeny compared to that of other sires.

Yearling Height (YH), is a predictor of a sire's ability to transmit yearling height, expressed in inches, compared to the that of other sires.

Scrotal Circumference (SC), expressed in centimeters, is a predictor of the difference in transmitting ability for scrotal size compared to that of other sires.

Docility (DOC), is expressed as a difference in yearling cattle temperament, with a higher value indicating more favorable docility in a sire's offspring compared to another sire.

MATERNAL

Heifer Pregnancy (HP), is a selection tool to increase the probability or chance of a sire's daughters becoming pregnant as first-calf heifers during a normal breeding season. A higher EPD is the more favorable direction, and the EPD is reported in percentage units.

Calving Ease Maternal (CEM), is expressed as a difference in percentage of unassisted births, with a higher value indicating greater calving ease in first-calf daughters. It predicts the average ease with which a sire's daughters will calve as first-calf heifers when compared to daughters of other sires.

Maternal Milk (Milk), is a predictor of a sire's genetic merit for milk and mothering ability in his daughters compared to daughters of other sires. In other words, it is that part of a calf's weaning weight attributed to milk and mothering ability.

Mature Weight (MW), expressed in pounds, is a predictor of the difference in mature weight of daughters of a sire compared to the daughters of other sires.

Mature Height (MH), expressed in inches, is a predictor of the difference in mature height of a sire's daughters compared to daughters of other sires.

FOOT SCORE

Claw Set (Claw), is expressed in units of claw-set score. A lower EPD is more favorable, indicating a sire will produce progeny with more ideal claw set, which is toes that are symmetrical, even and appropriately spaced.

Foot Angle (Angle), is expressed in units of foot-angle score. A lower EPD is more favorable, indicating a sire will produce progeny with more ideal foot angle, which is a 45-degree angle at the pastern joint with appropriate toe length and heel depth.

CARCASS

The genetic evaluation produces a single set of EPDs for carcass traits where the units of measure are in trait format and analyzed on an age-constant basis.

Carcass Weight (CW), expressed in pounds, is a predictor of the differences in hot carcass weight of a sire's progeny compared to progeny of other sires.

Marbling (Marb), is expressed as a fraction of the difference in USDA marbling score of a sire's progeny compared to progeny of other sires.

Ribeye Area (RE), expressed in square inches, is a predictor of the difference in ribeye area of a sire's progeny compared to progeny of other sires.

Fat Thickness (Fat), expressed in inches, is a predictor of the differences in external fat thickness at the 12th rib (as measured between the 12th and 13th ribs) of a sire's progeny compared to progeny of other sires.

\$VALUE INDEXES

\$Value Indexes, reported in dollars per head, are multi-trait selection indexes where a higher value suggests more profit. The \$Value is an estimate of how future progeny of each sire are expected to perform, on average, compared to progeny of other sires if sires were randomly mated to cows and if calves were exposed to the same environment.

Maternal Weaned Calf Value (\$M), expressed in dollars per head, predicts profitability differences in progeny due to genetics from conception to weaning. Increased selection pressure on \$M aims to decrease overall mature cow size and improve foot structure and fertility while maintaining weaning weights consistent with today's production.

Weaned Calf Value (\$W), expressed in dollars per head, provides the expected difference in future progeny preweaning performance from birth to weaning. Increased selection pressure on \$W increases weaning and maternal milk traits while increasing mature cow size.

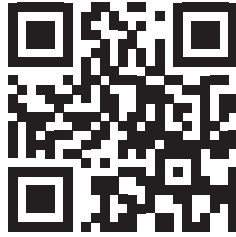
Cow Energy Value (\$EN), expressed in dollars savings per cow per year, assesses differences in cow energy requirements as an expected dollar savings difference in daughters of sires. A larger value is more favorable when comparing two animals. Components for computing \$EN savings difference include lactation energy requirements and energy costs associated with differences in mature cow size.

Feedlot Value (\$F), expressed in dollars per head, is the expected average difference in future progeny performance for postweaning merit compared to progeny of other sires. The underlying objective assumes commercial producers will retain ownership of cattle through the feedlot phase and sell fed cattle on a carcass weight basis with no considerations of premiums or discounts for quality and yield grade.

Grid Value (\$G), expressed in dollars per carcass, is the expected average difference in future progeny performance for carcass grid merit, including quality and yield grade attributes, compared to progeny of other sires.

Beef Value (\$B), expressed in dollars per carcass, represents the expected average differences in the progeny postweaning performance and carcass value compared to progeny of other sires. This index assumes commercial producers wean all male and female progeny, retain ownership of these animals through the feedlot phase, and market these animals on a quality-based carcass grid.

HOW TO USE THE QR CODES IN THIS CATALOG:



The codes will take you directly to videos for each bull. To use the QR code with your phone:

- 1. Open the camera on your smartphone.*
- 2. Point your camera at the QR code in the catalog, then tap on the link that appears.*
- 3. The video of the bull will begin playing.*

DEDICATED. COMMITTED.

WHOLE HERD REPORTING WITH MATERNALPLUS®



Raising quality registered Angus cattle takes **COMMITMENT**.

As your genetic supplier, we are **DEDICATED** to not only improve today's genetics, but also prepare for the future of the Angus breed. We believe a commitment to improvement starts with the female.

Commit to the female — commit to MaternalPlus®.

Contact Customer Service at 816-383-5100 or angus@angus.org for more information.



ANGUS
THE BUSINESS BREED

MCC THEDFORD 3101



DOB: 02/10/23 TAT: 3101 REG: 20642168

Bar R Jet Black 5063
Hoffman Thedford
HA Rito Lady 3839

Connealy Black Granite
Bar R Iris Anita 0113
KG Solution 0018
HA Rito Lady 0622
Coleman Charlo 0256
S A V Blackcap May 4136
Baldridge Colonel C251
MCC SuperMama 0139



Act. BW	69
205 WT	592
365 WT	1133

CED	BW	WW	YW	DOC	CEM	Milk
14	-0.9	75	144	17	11	42
SC	Marb	REA	\$M	\$W	\$B	\$C
1.44	0.49	1.03	79	85	170	299

LOT 1



Here's a powerful Thedford son that packs a lot of punch. He's a fun one to study on paper and one you will certainly find in the pen. He is out of a really nice Rainfall daughter. Definitely a calving ease trait sire, being in the top 4% of the breed. Pairing this kind of calving ease with the highest YW epd in the sale makes him really unique.

MCC THEDFORD 3111



DOB: 02/26/23 TAT: 3111 REG: 20642252

Bar R Jet Black 5063
Hoffman Thedford
HA Rito Lady 3839

Connealy Black Granite
Bar R Iris Anita 0113
KG Solution 0018
HA Rito Lady 0622
EXAR Denver 2002B
Quaker Hill Blackcap 0A32
Soo Line Motive 9016
PRA Erica Windy 071



Act. BW	87
205 WT	633
365 WT	1119

CED	BW	WW	YW	DOC	CEM	Milk
6	1.5	67	117	17	7	27
SC	Marb	REA	\$M	\$W	\$B	\$C
0.91	0.85	0.67	75	69	163	286

LOT 2



You can circle this one from the start because this thick topped Thedford son is sure to catch your eye. He's big, bold and super functional out of a stellar Manning dam that helped him earn a WW ratio of 119. He's got maternal excellence in his pedigree and you can expect him to produce the kind of cattle that pay the bills.

MCC RESILIENT 3115



DOB: 03/01/23 TAT: 3115 REG: 20640631

Sitz Stellar 726D
Sitz Resilient 10208
Sitz Miss Burgess 1856

Mohnen Substantial 272
SITZ Pride 200B
Sitz Top Game 561X
Sitz Miss Burgess 4381
Connealy Capitalist 028
LD Dixie Erica 2053
K C F Bennett Absolute
MCC SuperMama 831



Act. BW	99
205 WT	678
365 WT	1145

CED	BW	WW	YW	DOC	CEM	Milk
3	3.5	81	142	12	3	22
SC	Marb	REA	\$M	\$W	\$B	\$C
0.35	1.12	0.63	66	68	185	306

LOT 3



This dude is a stud! Here's a bull that infuses loads of growth with carcass quality and comes from a broody Capitalist 316 daughter. His dam knocked it out of the park once again earning Pathfinder Status on her first three calves. Top 10% in the breed in WW, YW, \$B, and \$C.

MCC RESILIENT 3103



DOB: 02/16/23 TAT: 3103 REG: 20646413

Sitz Stellar 726D
Sitz Resilient 10208
Sitz Miss Burgess 1856

Mohnen Substantial 272
SITZ Pride 200B
Sitz Top Game 561X
Sitz Miss Burgess 4381
HF Kodiak 5R
TLA Beauty 5R
A A R Really Windy 1205
PRA Erica Freightliner 863



Act. BW	65
205 WT	612
365 WT	1102

CED	BW	WW	YW	DOC	CEM	Milk
-1	0.2	52	98	11	-1	35
SC	Marb	REA	\$M	\$W	\$B	\$C
0.8	0.59	0.11	66	61	111	210

LOT 4



The 3110 cow strikes again with this eye-catching Resilient son. His 10 year old dam has never produced a dud and has stuck AI every year, positioning herself as one of the greatest income-producing cows in the herd. We have saved every daughter she has produced and you will see her influence in lots 3106, 3111, 3114 & 3123. This bull is a good one, and has the cow behind him to prove it.

MCC RESILIENT 3113



DOB: 02/28/23 TAT: 3113 REG: 20646304

Sitz Stellar 726D
Sitz Resilient 10208
Sitz Miss Burgess 1856

Mohnen Substantial 272
SITZ Pride 200B
Sitz Top Game 561X
Sitz Miss Burgess 4381
baldridge Xpand x743
Baldridge Isabel Y69
C R A Bextor 872 5205 608
MCC SuperMama 7212



Act. BW	71
205 WT	567
365 WT	1021

CED	BW	WW	YW	DOC	CEM	Milk
13	-2.2	64	112	17	8	30
SC	Marb	REA	\$M	\$W	\$B	\$C
0.98	0.71	0.6	80	73	122	238

LOT 5



Look for this bull to be in the "sleep all night" heifer bull group. Out of a Baldridge Colonel daughter with a super disposition and exceptional udder. Solid numbers with good growth that will add carcass merit, qualifying him as CAB.

A Note on Calving Ease

A word on Calving Ease: Over the years, we have seen an emphasis being placed on high calving ease sires in an effort to help ensure a live calf hits the ground, and that less heifers need assistance in calving. This continues to be very effective. However, where we have seen issues is when the use of high calving ease sires is protocol across the herd or high calving ease is stacked upon high calving ease. Over generations, the cattle can tend to become fine-boned and frailer in their design. This can be seen in lighter calves when sale time comes, but more concerning is that it spills over into pelvic area trending smaller, potentially leading to increased calving difficulty. It really does continue to be about balance.

Calving Ease Direct (CED), is expressed as a difference in percentage of unassisted births, with a higher value indicating greater calving ease in first-calf heifers. It predicts the average difference in ease with which a sire's calves will be born when he is bred to first-calf heifers.

Example: Sire A has a CED of 10 and Sire B has a CED of 8. Sire A will have 2% (2 out of 100) less assisted births in 1st calf heifers than Sire B.

MCC RAINFALL 3104



DOB: 2/18/23 TAT: 3104 REG: 20641144

Coleman Charlo 0256
S A V Rainfall 6846
S A V Blackcap May 4136

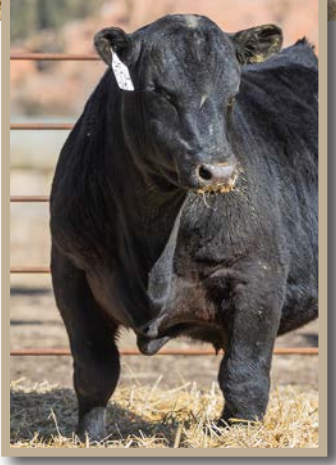
O C C Paxton 730P
Bohi Abigale 6014
S A V 8180 Traveler 004
S A V May 2397
Tehama Upward Y238
Tehama Mary Blackbird Y684
S A V Bruiser g164
TA Miss Star 525



Act. BW	86
205 WT	581
365 WT	1043

CED	BW	WW	YW	DOC	CEM	Milk
8	0.2	70	119	18	13	31
SC	Marb	REA	\$M	\$W	\$B	\$C
0.37	0.76	0.9	76	79	149	269

LOT 6



MCC Rainfall 3104.

On physical appraisal, people will appreciate this bull for his strength and stoutness—qualities that come from both the topside and bottom side of the pedigree. His broody Tahoe dam gets the job done every year. She has an average calving interval of 361 days, and an average nursing ratio of 104. He will moderate mature size.



THE Men, THE Myths, AND THE Legends.

MCC RAINFALL 3102



DOB: 02/10/23 TAT: 3102 REG: 20641069

Coleman Charlo 0256
S A V Rainfall 6846
S A V Blackcap May 4136

O C C Paxton 730P
Bohi Abigale 6014
S A V 8180 Traveler 004
S A V May 2397
Tehama Upward Y238
Tehama Mary Blackbird Y684
Marcys Freightliner 879
Marcys Erica 15



Act. BW	79
205 WT	597
365 WT	1083

CED	BW	WW	YW	DOC	CEM	Milk
11	-0.6	52	98	21	11	38
SC	Marb	REA	\$M	\$W	\$B	\$C
1.61	0.72	0.77	89	67	135	264

LOT 7



Rainfall is a sire that will have a profound impact on our herd for generations to come. They are complete cattle that are difficult to fault and this strong-topped, big bodied son is no exception. Should work great on heifers, improve foot quality and carcass merit doing all this in a moderate package. Not only did his Tahoe dam do a nice job raising her first calf, she AI'd back and was the first one to calve this year.

MCC RAINFALL 3106



DOB: 02/23/23 TAT: 3106 REG: 20641146

Coleman Charlo 0256
S A V Rainfall 6846
S A V Blackcap May 4136

O C C Paxton 730P
Bohi Abigale 6014
S A V 8180 Traveler 004
S A V May 2397
Connealy Black Granite
MCC SuperMama 1132
Musgrave Aviator
PRA Erica Motive 4110



Act. BW	74
205 WT	578
365 WT	1036

CED	BW	WW	YW	DOC	CEM	Milk
14	-2.5	50	87	12	15	33
SC	Marb	REA	\$M	\$W	\$B	\$C
0.89	0.88	0.15	82	67	105	218

LOT 8



Born on a -24 degree day and has the scars to prove it, but everything else is all there. He is long, smooth and when it comes to disposition, he is "Mr. Personality". Calving ease trait bull with good marbling and maternal value. His dam is a super nice Genesis daughter going back to the productive 4110 cow of Bryson's.

MCC RAINFALL 3109



DOB: 02/24/23 TAT: 3109 REG: 20641142

Coleman Charlo 0256
S A V Rainfall 6846
S A V Blackcap May 4136

O C C Paxton 730P
Bohi Abigale 6014
S A V 8180 Traveler 004
S A V May 2397
Connealy Confidence Plus
MCC SuperMama 3046
Quaker Hill Manning 4EX9
M Diamond Susie 501



Act. BW	48
205 WT	529
365 WT	889

CED	BW	WW	YW	DOC	CEM	Milk
9	-0.7	46	82	15	13	33
SC	Marb	REA	\$M	\$W	\$B	\$C
1.03	1.28	0.11	86	64	142	270

LOT 9



This guy was a twin and got off to a little bit of a rough start. He should work well on heifers. If you are trying to improve marbling in your cattle, with an epd of 1.29, he should point you in the right direction. Being a Rainfall son out of Boomerang daughter, he should make some outstanding moderate females.

MCC RAWHIDE 3117



DOB: 03/01/23 TAT: 3117 REG: 20642331

Poss Maverick
Poss Rawhide
Poss Blueblood 6502

Basin Payweight 1682
Poss Pride 5163
Poss Easy Impact 0119
Poss Blueblood 920
S S Objective T510 oT26
SydGen Gina 4235
BT Crossover 758N
S 3 Miss Blackbird 028-00



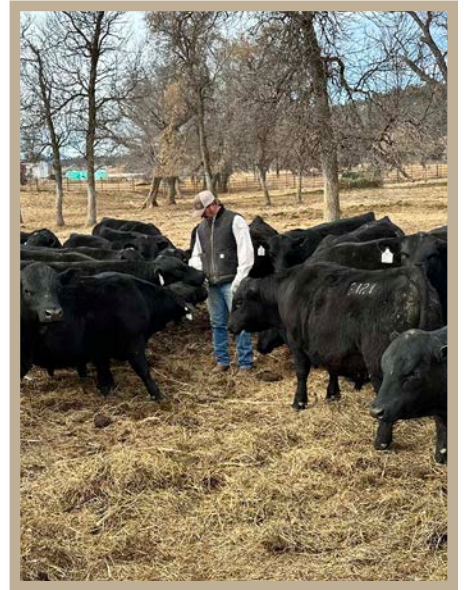
Act. BW	81
205 WT	682
365 WT	1180

CED	BW	WW	YW	DOC	CEM	Milk
15	-0.9	69	111	13	13	20
SC	Marb	REA	\$M	\$W	\$B	\$C
0.59	0.57	0.57	51	66	142	235

LOT 10



This attractive patterned Rawhide bull combines growth and surefire calving ease with a super maternal package. His elegant, fertile dam never misses and weaned 3117 off heavy with a WW ratio of 114. In fact, at 11 years of age his dam bred back on the first cycle and calved early. She has a calving interval of 364 days and an avg nursing ratio of 109. We anticipate this bull will provide exceptional calving ease and leave behind both functional and fertile daughters.



MCC RAWHIDE 3116



DOB: 03/01/23 TAT: 3116 REG: 20642262

Poss Maverick
Poss Rawhide
Poss Blueblood 6502

Basin Payweight 1682
Poss Pride 5163
Poss Easy Impact 0119
Poss Blueblood 920
EXAR Denver 2002B
Quaker Hill Blackcap 0A32
MCC Genesis 5003
Gmar Reserve B141



Quaker Hill Manning 4EX9
MCC Miss 903
Mills Supermama 707

Act. BW	86
205 WT	622
365 WT	1043

CED	BW	WW	YW	DOC	CEM	Milk
8	0.7	75	125	22	16	38
SC	Marb	REA	\$M	\$W	\$B	\$C
0.45	0.61	0.55	64	83	158	269

LOT 11



Produced from one of the broodiest females in the herd, out of a beautiful Quaker Hill Manning daughter, this Rawhide bull provides strong growth and phenotypic balance. His daughters should be real "lookers" and have the performance to back it up! Super disposition.

MCC RAWHIDE 3118



DOB: 03/04/23 TAT: 3118 REG: 20642261

Poss Maverick
Poss Rawhide
Poss Blueblood 6502

Basin Payweight 1682
Poss Pride 5163
Poss Easy Impact 0119
Poss Blueblood 920
Tehama Upward Y238
Tehama Mary Blackbird Y684
Cole Creek Full Bore 730
Pannell Miss 404



Tehama Tahoe B767
MCC Miss 905
N77R Miss Full Bore 404 3263

Act. BW	98
205 WT	597
365 WT	1077

CED	BW	WW	YW	DOC	CEM	Milk
2	3.3	75	122	21	10	31
SC	Marb	REA	\$M	\$W	\$B	\$C
0.75	0.79	0.81	52	72	165	266

LOT 12



Big bodied and good footed, this growthy Rawhide bull stems from a really nice Tahoe cow. Bottom side of the pedigree is full of maternal excellence and traces back to a heifer Neiman Cattle Company donated to Bryson as part of the Young Cattle Producers of Wyoming program several years ago. Big carcass trait bull that should move the needle without being too extreme.

MCC RAWHIDE 3119



DOB: 03/05/23 TAT: 3119 REG: 20642273

Poss Maverick
Poss Rawhide
Poss Blueblood 6502

Basin Payweight 1682
Poss Pride 5163
Poss Easy Impact 0119
Poss Blueblood 920



MCC Equity 5094
MCC SuperMama 8207
MCC SuperMama 0036

Barstow Cash
MCC SuperMama 1602
MCC Daybreak
MCC Super Mama 209

Act. BW	85
205 WT	554
365 WT	1007

CED	BW	WW	YW	DOC	CEM	Milk
12	-0.3	67	109	26	12	23
SC	Marb	REA	\$M	\$W	\$B	\$C
1.54	0.52	0.95	67	69	142	251

LOT 13



This guy is a rare combination of stoutness and calving ease. He will certainly catch your attention out in the pen and when you look at him on paper, he doesn't disappoint either...very balanced from an epd standpoint.

MCC RAWHIDE 3114



DOB: 03/01/23 TAT: 3114 REG: 20640625

Poss Maverick
Poss Rawhide
Poss Blueblood 6502

Basin Payweight 1682
Poss Pride 5163
Poss Easy Impact 0119
Poss Blueblood 920



MCC Boomerang 7095
MCC Miss 020
Mills Supermama 803

Connealy Confidence Plus
MCC SuperMama 3046
Quaker Hill Manning 4EX9
PRA Erica Motive 4110

Act. BW	75
205 WT	575
365 WT	884

CED	BW	WW	YW	DOC	CEM	Milk
9	1	64	105	16	9	27
SC	Marb	REA	\$M	\$W	\$B	\$C
0.43	0.6	0.7	76	68	147	267

LOT 14



Here's an efficient Rawhide son that won't eat you out of house and home. A calving ease trait bull that will still provide necessary growth but keep mature size in check. Out of a Boomerang/Manning daughter also going back to the productive 4110 line, he should leave you with some really nice females.

**“CATTLE ARE *expensive*, BUT
STILL *cheaper* THAN DRUGS,
REHAB OR A DEFENSE ATTORNEY.”**

MCC BOOMERANG 3120



DOB: 03/18/23 TAT: 3120 REG: 20640629

Connealy Confidence Plus
MCC Boomerang 7095
 MCC SuperMama 3046

TEX Playbook 5437
Mills Miss Playbook 811
 DB Ms Impression 376

Connealy Confidence 0100
 Elbanna of Conanga 1209
 Baldrige Waylon W34
 MCC Supermama 9015
 Basin Payweight 1682
 Rita 1C43 of gM26 Complete
 Connealy Impression
 DB Ms In Darkhorse 031

Act. BW	75
205 WT	596
365 WT	1036



LOT 15



CED	BW	WW	YW	DOC	CEM	Milk
12	-0.2	59	101	24	17	33
SC	Marb	REA	\$M	\$W	\$B	\$C
0.73	1.2	0.94	86	72	176	314

A long, smooth Boomerang son with reliable calving ease in a phenotypically appealing package. His beautiful Playbook dam has exceptional utter quality and docility. This guy reads really well across his epds excelling in the carcass traits, being in the top 15% of the breed, as well as landing in the top 10% in \$M and \$C. Positive \$EN!

MCC BOOMERANG 3122



DOB: 03/18/23 TAT: 3122 REG: 20640628

Connealy Confidence Plus
MCC Boomerang 7095
 MCC SuperMama 3046

Connealy Freightliner
M Diamond Susie 501
 M Diamond Susie 387

Connealy Confidence 0100
 Elbanna of Conanga 1209
 Baldrige Waylon W34
 MCC Supermama 9015
 Bon View Bando 598
 Joana Erica of Conanga
 Joana Erica of Conanga
 M Diamond Susie 031

Act. BW	63
205 WT	661
365 WT	1050



LOT 16



CED	BW	WW	YW	DOC	CEM	Milk
13	-1.2	53	97	9	9	26
SC	Marb	REA	\$M	\$W	\$B	\$C
0.82	0.94	0.38	51	57	131	221

This bull is a moderate Boomerang son with double digit calving ease and negative birthweight. He should be a sureshot heifer bull that will keep frame in check. His dam is a consistent producer and has great bag/udder quality.

A Note on Our Females

We firmly believe the success of a seedstock program is built on a foundation of great females. In our effort to produce these females, we have implemented genomic data on all our cattle, through DNA testing, to supplement our phenotypic selection decisions. We recognize this is simply another tool to aid in the selection process and does not replace phenotypic evaluation. To achieve the phenotypic performance we desire ie., we aim for balanced performance cattle with fault free structure and fertility. We could have great genetics on paper, but have bad feet, poor dispositions, less than acceptable maternal ability, etc., if we just selected replacements based solely on numbers.

Another important phenotypic selection tool we have recently implemented, under the advisement of Dr. James Myers, is pelvic measurements on all replacement heifer candidates. This provides us with another criterion to weed out any females that have the potential to perpetuate genetics more prone to calving difficulty.



**“YOU CAN'T WAIT FOR
inspiration. YOU HAVE TO go
after it WITH A CLUB.”**

- Jack London

MCC RCR ENHANCE 3502 

DOB: 01/11/23 TAT: 3502 REG: 20611783

SydGen Enhance
RCR Enhance
J&T Miss Elena 1967

SydGen Exceed 3223
SydGen Rita 2618
JCN Rito 151 JC01
JCN Elena JN24
ER Rito 1243 08P6
Envious Blackbird of ER N596
Windy Ridge Impression 93
Holman Bea 9096



Act. BW	90
205 WT	600
365 WT	1075

JCN Rito 151 JC01
J&T Miss Intense 1968
JCN Beas Intense JN34

CED	BW	WW	YW	DOC	CEM	Milk
11	-1	48	90	22	5	30
SC	Marb	REA	\$M	\$W	\$B	\$C
1.92	0.46	0.43	62	54	130	231

LOT 17



We purchased this calf and his dam from Rock Creek Cattle last spring. He goes back to Sydgen Enhance. His dam is a big-bodied, easy fleshing cow with good feet and a really nice disposition.

MCC STUNNER 3128 

DOB: 04/23/23 TAT: 3128 REG: 20640632

Musgrave 316 Stunner
Musgrave Stunner 2022
Mill Brae Ident Blackcap6007

LD Capitalist 316
MCATL Blackbird 831-1378
Koupals B&B Identity
Mill Brae Bis Gammer 4016
Basin Payweight 006S
21AR O Lass 7017
Rito Revenue 5M2 of 2536 Pre
MCC SuperMama 5001



Act. BW	88
205 WT	797
365 WT	1183

Basin Payweight 1682
MCC SuperMama 5089
MCC SuperMama 1037

CED	BW	WW	YW	DOC	CEM	Milk
9	0.5	71	127	24	5	40
SC	Marb	REA	\$M	\$W	\$B	\$C
1.07	0.73	0.38	90	85	149	283

LOT 18



He may be the youngest bull in the offering but he certainly did not let that stop him. Out of a deep-bodied broody Payweight daughter that gets the job done year after year. She has a nursing ratio of 113 on 6 calves and a YW ratio of 106 on 5 calves. Solid epd package with the phenotype to go with it. Coupling his dam with Stunner on the top side should almost guarantee soggy, easy-fleshing, scale pounding calves.

MCC STUNNER 3125



DOB: 03/27/23 TAT: 3125 REG: 20640622

Musgrave 316 Stunner
Musgrave Stunner 2022
Mill Brae Ident Blackcap6007

LD Capitalist 316
MCATL Blackbird 831-1378
Koupals B&B Identity
Mill Brae Bis Gammer 4016
Tehama Upward Y238
Tehama Mary Blackbird Y684
SydGen Mandate 6079
S 3 Cross Lassie 03-07



Act. BW	85
205 WT	581
365 WT	992

CED	BW	WW	YW	DOC	CEM	Milk
1	2.8	74	129	6	-2	21
SC	Marb	REA	\$M	\$W	\$B	\$C
0.44	0.62	0.77	42	61	149	235

LOT 19



Good expected progeny growth in this Stunner son. Out of a nice Tahoe daughter that goes back to the dam of Lot 10. Lots of maternal excellence on both sides of this pedigree.

MCC STUNNER 3107



DOB: 02/23/23 TAT: 3107 REG: COMMERCIAL

Musgrave 316 Stunner
Musgrave Stunner 2022
Mill Brae Ident Blackcap6007

LD Capitalist 316
MCATL Blackbird 831-1378
Koupals B&B Identity
Mill Brae Bis Gammer 4016



Act. BW	91
205 WT	626
365 WT	1125

CED	BW	WW	YW	DOC	CEM	Milk
N/A	N/A	N/A	N/A	N/A	N/A	N/A
SC	Marb	REA	\$M	\$W	\$B	\$C
N/A	N/A	N/A	N/A	N/A	N/A	N/A

LOT 20



We have never kept a commercial bull calf intact before but this dude is too good not to offer. He has loads of muscle and has been good since he hit the ground. His moderate dam is a quarter Simmental cow that we sure wish was registered. She has weaned off some of the heaviest calves year after year and always calves early.

“Peace...IT DOES NOT MEAN TO BE IN A PLACE WHERE THERE IS NO noise, trouble OR hard work. IT MEANS TO BE IN THE MIDST OF THOSE THINGS AND STILL BE CALM IN YOUR heart”

MCC STUNNER 3121



DOB: 03/18/23 TAT: 3121 REG: 20640686

Musgrave 316 Stunner
Musgrave Stunner 2022
Mill Brae Ident Blackcap6007

LD Capitalist 316
MCATL Blackbird 831-1378
Koupals B&B Identity
Mill Brae Bis Gammer 4016
Tehama Upward Y238
Tehama Mary Blackbird Y684
Basin Payweight 1682
DB Ms Impression 376



Act. BW	91
205 WT	538
365 WT	1036

CED	BW	WW	YW	DOC	CEM	Milk
10	0.2	61	109	18	5	31
SC	Marb	REA	\$M	\$W	\$B	\$C
0.88	0.54	0.66	69	68	135	244

LOT 21



We really appreciate the body and rib in this bull as he moves on a sound skeleton. His dam is a Tahoe daughter going back to Payweight on the dam's side. Lots of maternal quality on both the top and bottom of the pedigree.



MCC STUNNER 3126



DOB: 03/27/23 TAT: 3126 REG: 20640623

Musgrave 316 Stunner
Musgrave Stunner 2022
Mill Brae Ident Blackcap6007

LD Capitalist 316
MCATL Blackbird 831-1378
Koupals B&B Identity
Mill Brae Bis Gammer 4016
Tehama Upward Y238
Tehama Mary Blackbird Y684
Basin Payweight 1682
MCC SuperMama 0036



Act. BW	85
205 WT	597
365 WT	1005

CED	BW	WW	YW	DOC	CEM	Milk
6	0.7	68	126	22	6	33
SC	Marb	REA	\$M	\$W	\$B	\$C
0.83	0.49	0.87	42	70	157	246

LOT 22



This bull's sire, Stunner 2022 stamps his calves with a distinct look...big bodied, nice muscling, and good performance in a moderate package. Out of a Tahoe daughter that goes back to Payweight on her dam's side should lend itself well to the maternal side of this bull's progeny.

YEARLING BULLS

MCC STUNNER 3123



DOB: 03/23/23 TAT: 3123 REG: 20651211

Musgrave 316 Stunner
Musgrave Stunner 2022
Mill Brae Ident Blackcap6007

LD Capitalist 316
MCATL Blackbird 831-1378
Koupals B&B Identity
Mill Brae Bis Gammer 4016
EXAR Denver 2002B
Quaker Hill Blackcap 0A32
Soo Line Motive 9016
PRA Erica Windy 071

Act. BW	86
205 WT	556
365 WT	932

CED	BW	WW	YW	DOC	CEM	Milk
8	0.5	61	110	18	4	30
SC	Marb	REA	\$M	\$W	\$B	\$C
0.22	0.82	0.95	74		161	283

LOT 23



A bull that will improve carcass traits in a herd, qualifying as CAB. He will follow very closely to the body type and style of the other Stunner sons selling, and will be moderate in his mature size. His dam is also one that goes back to the productive 4110 line, which adds to the maternal value this bull has to offer.

MCC STUNNER 3127



DOB: 04/08/23 TAT: 3127 REG: 20640621

Musgrave 316 Stunner
Musgrave Stunner 2022
Mill Brae Ident Blackcap6007

LD Capitalist 316
MCATL Blackbird 831-1378
Koupals B&B Identity
Mill Brae Bis Gammer 4016
Quaker Hill Rampage 0A36
Jazzed of Conanga 4660
TEX Playbook 5437
ML Lady Betty 501

Act. BW	76
205 WT	495
365 WT	893

CED	BW	WW	YW	DOC	CEM	Milk
9	-0.2	59	101	13	4	33
SC	Marb	REA	\$M	\$W	\$B	\$C
1.19	1	0.93	66	73	166	281

LOT 24



This calf is one of the youngest in the sale, but will catch up before breeding time. Calving ease sire with lots of shape and body that really does well in the carcass traits with a marbling epd over 1.0 and RE of .95, and hits the grid qualifying him as CAB. He should be moderate in his mature size. Positive \$EN.

“**COURAGE DOES NOT ALWAYS roar.**
SOMETIMES COURAGE IS THE QUIET VOICE
AT THE END OF THE DAY SAYING,
“I will try again tomorrow.””
—Mary Anne Radmacher







Thank you for your support!

WE'LL SEE YOU NEXT YEAR!

BE SURE TO FOLLOW US ON:



@MILLSCATTLECOWYO

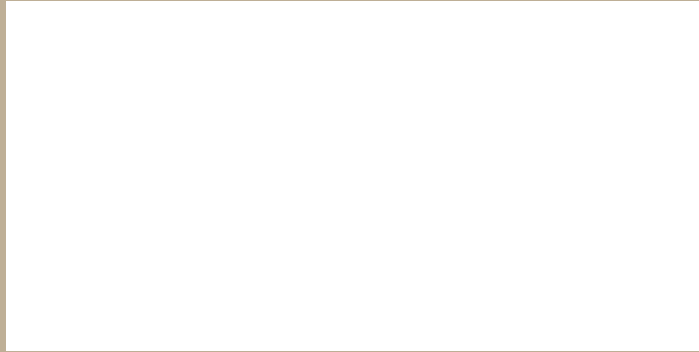
Catalog designed by:



KROSECOMPANY.COM



MILLS CATTLE
1506 HIGHWAY 24
P.O. BOX 3
HULETT, WY 82720



**MILLS
CATTLE** CO.

PRODUCTION BULL SALE

04.12.2024



Scan QR code to view our website!