

SELLING
83 YEARLING ANGUS BULLS
AND 21 YEARLING ANGUS HEIFERS



MONDAY, MARCH 27, 2023

WESTERN LIVESTOCK AUCTION | GREAT FALLS MONTANA | 1 P.M.

DVAuction
Broadcasting Real-Time Auctions

HARRERSLOSTLAKERANCH.COM

WELCOME!

Dear Cattle Producers:

Please accept this invitation to Harrer's Lost Lake Ranch, with our partner Windy Ridge Angus Ranch, 29th Annual "In The Real World (Production) Sale"... emphasizing that cattle must be bred, fed, and managed to work in the real world. This is the 87th year that Harrers have been breeding and selling Angus cattle!

There are many reasons for optimism in the coming year: 1) Cattle inventory has decreased due to widespread drought over the past three years and high input costs; 2) Total cattle/beef slaughter has fallen due to lower numbers and lower weights; 3) Beef demand remains strong domestically, in spite of inflation (there is more home cooking as a result though); and 4) Beef exports hit an all-time high in 2022. Given the laws of supply and demand, cattle markets are headed higher, likely the highest in history. Meanwhile, weather patterns are shifting to El Nino, to break the drought and the cost of hay and feed is expected to drop.

This year, we are offering 83 yearling bulls, 12 registered yearling heifers and 9 commercial yearling heifers. 60% of the bulls qualify as "heifer bulls", many having very good performance as well. 45% of the bulls earned the CAB Targeting the Brand logo, seen on their printed pedigree.

Our cattle are bred for balance. All cattle are fed at Lost Lake Ranch. As we've done in prior years, all registered cattle are sire-parentage verified by DNA testing ... you really do get the cattle you think you are buying! We have genomically-enhanced EPDs (GE-EPDs) using Angus GS (Gene Seek) on all the registered sale bulls. Thus, buyers can purchase bulls with less risk and greater confidence! You'll note that in the American Angus Assn Selection Tools (page 9).

A clarification about genomic tests, if you look at the raw data from them before they are incorporated into the EPD: each trait is expressed as a percentile rank within the entire population data base, from 1 to 100%. For each trait the top (best) percentile is 1% and the bottom (worst) percentile is 100%. Another clarification is that genomic tests clear away the bias added for bull management and environment ... genomic tests strip away the difficulty in comparing bulls fed heavily and those fed leaner rations. Enjoy knowing even more about your purchase with higher accuracy EPDs. In many ways, we offer you "More Bull for the Dollar Spent!"

As important as the numbers are, it is the physical traits of a bull that allow him to deliver his genetic information during breeding season. Such traits as structural soundness, frame size and body volume, fleshing ability, docility, and reproductive characteristics. Lost Lake has been certified in the Maternal Plus program for the past two years ... attention to cow traits!

To assist in making your decisions ahead of time, visit our web site at www.HarrersLostLakeRanch.com where we will be posting videos, scrotal size, and final weights. We are again offering online viewing and bidding through www.DVAuction.com. As they say, "Tune in for the sale and make your purchases." As always, calling in your order and/or bid is also readily available. See details on pages 6-7.

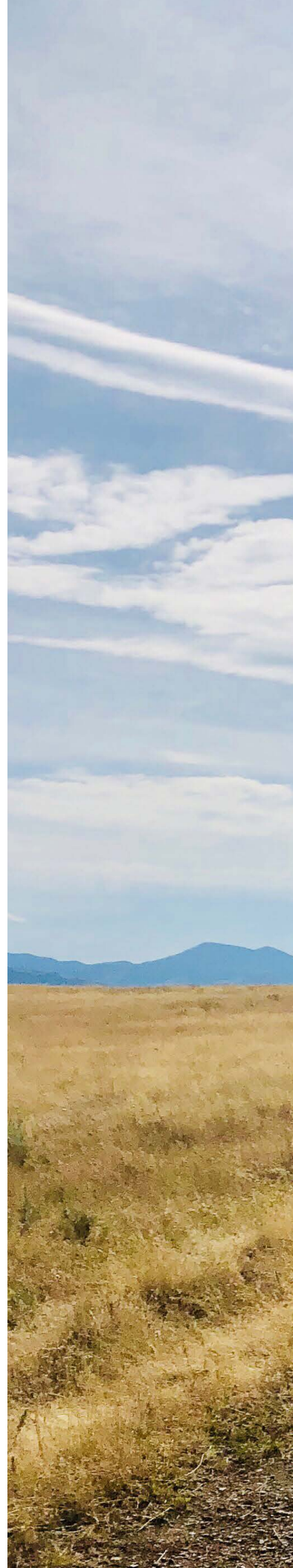
A reminder that we still offer the following value-added options: free delivery (minimal qualifications, see page 5); discounts for those delivering their own cattle; volume discounts; wintering agreements (free until 4-15-23); shared Loss of Use/Mortality Insurance; and Harrer's Satisfaction Guarantee.

We are pleased to inform you that we are now working with KRose Co., who is helping manage many aspects of this year's sale. We are pleased to have Karoline and her crew on board with us!

We hope you can join us in person or by phone or online on March 27, 2023, whether looking to buy, just looking, or just visiting. Thank you to our previous buyers and bidders ... we really appreciate your support!

Sincerely,

Grant & Deanna Harrer and the Harrer Family







Greetings Angus breeders,

Welcome to our 29th annual joint production sale with Lost Lake Ranch. We appreciate your interest and confidence in our cattle and breeding program.

The last couple years of drought has forced producers to make some difficult decisions. Whether to sell cows, buy feed, or maybe to sell all the cows and retire. We sold cows and bought hay. Banking on a surge in cattle prices in the coming years and some help from Mother Nature in the moisture department.

Our largest sire group in the sale are out of CAR Hobson. He stands out to me with his high weaning weight EPD, high heifer pregnancy EPD, moderate milk EPD, and high marbling EPD. Represented by heavy bulls or steers in the fall and heifers that will go on and make mother cows worth keeping. I strongly believe that our cattle need to have superior marbling genetics. I want a tender steak as do the people to whom we are selling our beef. We need to keep the end product in mind.

Windy Ridge purchased a 1/2 interest, along with Lost Lake Ranch, in Woirhaye Jet Setter 0755 in the 2021 Midland bull sale. Jet Setter had an average daily gain of 4.58 pounds coupled with an efficiency ratio of 118. That's an outstanding combination in this time of drought. Be sure to take a look at his first calf crop in the sale. Another feed efficient sire is J R Fast Forward. One of the owners of Fast Forward is quoted as saying "Fast Forward could very well be the best beef bull for female replacements in the entire Angus breed".

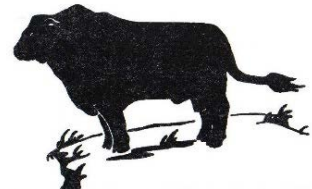
Many thanks to Grant and Deanna for their cooperative effort in this bull sale as well as to my family, Chuck, Noah, and Amber. Thank you to Jeff and his crew for feeding and taking care of the bulls in the Development Center. A shout out as well to our vet Pat Trindle for being in charge of the cattle's health. Last but certainly not least THANK YOU to our buyers, past, present, and future.

We certainly hope to see you sale day but if the cows won't allow it please watch and bid online at DVAuction.com, be sure to register a day ahead. If you have any questions call me at 406-737-4320 or email at windyridge@itstriangle.com.

The bulls can be seen at the Lost Lake Ranch facility. Give me a call and I can give you a tour.

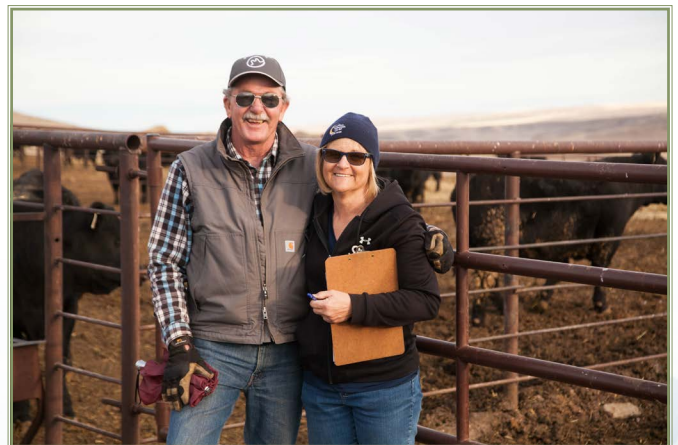
Thank you for your interest,

Karen and Chuck Davis and family



WINDY RIDGE ANGUS RANCH

Karen & Chuck Davis & Family
Geraldine, MT



KAREN & CHUCK



AURORA, NOAH, TRISTAN & AMBER





MONDAY, MARCH 27, 2023

**WESTERN LIVESTOCK AUCTION
GREAT FALLS MONTANA / 1 P.M.**



AUCTIONEER:

Kyle Shobe
Office..... 406-538-5125
Cell 406-366-0472

SALE LOCATION:

Western Livestock Auction, Great Falls, Montana. Take I-15 west of Great Falls for approximately 5 miles, then take the Manchester Exit 286. See map on page 44.

SALE DAY CONTACTS:

Western Livestock Auction.406-727-5400
Grant Harrer Cell406-899-9061
Karen Davis Cell406-750-7133

LIVESTOCK PRESS & RINGMEN:

John Goggings
Western Ag Reporter406/ 698-4159
Kurt Kangas
Regional Manager, American Angus Assn.
.661-706-2041
.406-366-4190
Devin Murnin
Western Livestock Journal 406-696-1502
Bill Pelton
Bill Pelton Livestock406-671-5100

FOOD AND REFRESHMENTS:

Complimentary food throughout the day by Lost Lake Ranch and Windy Ridge Ranch, including morning snacks, lunch at 11:30 a.m., and happy hour after the sale. Serving CAB Sirloin Salisbury Steak! Prepared by Broody's Catering.

SALE ORDER:

Ear tags will correspond with lot numbers in the catalog. Commercial heifers sell first, then registered heifers, then bulls. Within each group, sale order will be the catalog order.

GENETIC VERIFICATION:

All registered cattle have been parentage verified by DNA testing and all registered cattle have genetically-enhanced EPDs (AngusGS).

BULL DEVELOPMENT:

All the bulls have been fed at the Lost Lake Ranch Bull Development Center, since the day they were weaned. A high roughage diet is fed, to demonstrate the animal's potential, but they are conditioned to pass it on. We use a TMR (total mixed ration).

BREEDING SOUNDNESS EXAM:

All bulls have passed exams including reproductive tract physical, scrotal measurements, and semen analysis, by Pat Trindle, DVM. He also performed BSEs on all sale heifers.

HERD HEALTH:

Cattle have all been vaccinated for PI3, IBR, BVD, BRSV, Clostridials, Hemophilus and Pasturella. All poured for parasites. All have tested (ear notch) negative for persistent BVD infection. Cow herd tested Johne's free in Fall 2021.

INDIVIDUAL ANIMAL DATA:

Extensive data is provided on all registered cattle. All catalog EPDs are current as of Feb. 20, 2023. Updated EPDs can be viewed online at www.Angus.org. Supplemental information including final weights and scrotal measurements will be available at the sale or at www.HarrersLostLakeRanch.com.

BULL VIDEOS:

These are posted on DVAuction.com and HarrersLostLakeRanch.com

INSPECTION OF CATTLE:

The cattle are available for your inspection any time prior to the sale at Lost Lake Ranch (see map on page 44). View all the sale cattle at Western Livestock Auction on Sunday, March 26 and Monday, March 27.

ANNOUNCEMENTS:

Announcements from the auction block take precedence over any printed matter.

BIDS:

Online bids via DVAuction (see page 6 for details). Also, call absentee bids to auctioneer or any of the owners or any of the ringmen before the sale.

RETAINED INTEREST:

Lost Lake Ranch and its associates are retaining one-third revenue sharing semen interest on every registered yearling bull selling in this sale. Full possession and full salvage value sells on all bulls.



TERMS AND CONDITIONS:

The terms of the sale are cash or check, and all settlements must be made at the close of the auction. All animals are 100% guaranteed in accordance with the updated (2014) rules and regulations set forth by the American Angus Association. A copy of these rules and regulations is printed on page 43 of this catalog.

INSURANCE:

It is recommended that buyers insure their purchases. The purchaser assumes the risk of death and injury to their livestock immediately after the sale. Cattle Mortality, Loss of Use, and Major Medical coverage will be available through Stockmans Insurance Agency LLC. Bill Pelton, agent, will be at the sale. The sponsoring ranch will pay half the premium. See page 6 for details.

LIABILITY:

All persons who attend the sale do so at their own risk. Neither Lost Lake Ranch or Windy Ridge Ranch, nor their employees, assume any liability for any accidents which may occur.

DELIVERY:

Free bull and registered heifer delivery within Montana with single ranch total cattle purchases of \$3500 or more. \$75 per bull for delivery to adjacent states. Delivery of commercial females is the responsibility of the buyers. Buyers that pick up bulls on sale day, or within two days following the sale, will receive a discount of \$75 per bull.

VOLUME DISCOUNTS:

Buyers purchasing 5 bulls or more will receive 5% off all their bull purchases.

WINTERING:

Free through 4/15/23, then boarded at \$3/head/day. Bulls are kept at buyer's risk from time of sale.

SPECIAL THANKS:

Special thanks to our families and friends for all their help and support; to Jeff Schile (manager), Laura Yeodon and Callie Britton (the Lost Lake crew); to all the vendors that partner with Lost Lake throughout the year; and to all our bidders and buyers!

CALVING EASE CODES:

Star ratings are a subjective estimate of a bull's calving ease.

- ★ Cows
- ★★ Larger Framed Heifers & Cows
- ★★★ All Heifers & Cows

Catalog designed by:



KROSECOMPANY.COM

SALE DAY PHONE: (406) 727-5400

***Please bring this catalog with you
on sale day!***

MONTANA STATE UNIVERSITY STEER-A-YEAR PROGRAM

For the past three years, Lost Lake Ranch has contributed a steer calf to this program. The first year, we participated and learned. The second year, our Marda Swagger 463 steer had the "Best Carcass" as evaluated by standard measurements and MSU meat scientist Dr. Jane Boles.

This year, as of January 2023, our Fireball 672 steer has the top ADG of 5.00 lbs/day. The point being that if you raise steers for the feedlot directly for retained ownership, Lost Lake bulls will help your bottom line!

DVAuction

Broadcasting Real-Time Auctions

Never Miss An Auction Again!
Watch & Bid online for FREE!

**Visit www.DVAuction.com
and Register Today!**

For General Questions Please Contact Our Office:
(402) 316-5460 or support@dvauction.com

IT IS RECOMMENDED TO USE GOOGLE CHROME AS YOUR BROWSER

Stockmans Insurance Agency LLC

Livestock Insurer

Licensed
Since 1989

Coverage

Mortality, Loss of Use

For more information and rates, contact Bill Pelton

*"We partner with you to provide the protection you
want and need."*

**Pelton
Livestock
Marketing & Consulting**


406.671.5100 bill@billpelton.com www.BILLPELTON.com  

MULTIPLE ATTENDANCE, BIDDING AND BUYING OPTIONS

There will be three (3) convenient options:

- 1. In the stands** We want everyone to do what they are comfortable doing. Anyone with fever and/or cough should not physically attend (see other options).
- 2. Online or “Click to Bid”** DVAuction will broadcast the sale live. Go to DVAuction.com and see details on page 6 to set up an account and arrange bidding at least one day before the sale (use Google Chrome as the internet browser; can download for free from the DVAuction site). If help is needed call them at (402) 316-5460 or support@dvauction.com.
- 3. Leave your order** Whether the issue is distance to the sale, “social distancing,” calving, bad weather, or other plans, call any of the ringmen, the auctioneer, DVAuction, Grant or Karen (numbers on page 4 of the catalog).

WE WOULD BE HAPPY TO HELP YOU WITH ANY OF THESE OPTIONS!



ABOVE AVERAGE GOALS REQUIRE TARGETED BULLS


Aim High

The Targeting the Brand™ logo highlights registered Angus bulls with greater genetic potential to produce calves that meet the most challenging specifications of the *Certified Angus Beef®* brand.

Only 1 in 4 non-parent Angus bulls qualify.

Minimum Genetic Requirements

Marbling EPD (Marb)	+0.65
Dollar Grid Carcass Index (\$G)	+55.0



For more information on Targeting the Brand™ visit CABcattle.com.



Driving the science of better breeding

There's little room for error in the cattle business. Producers need the most advanced information to make smart selection decisions, and Angus Genetics Inc. (AGI) provides it through genomic-enhanced expected progeny differences (GE-EPDs).

GE-EPDs have become the industry standard for herd improvement, building on decades of science-backed genetic evaluation tools originated and maintained through the American Angus Association®, home to the largest and ever-growing single-breed beef cattle database.

EPDs that traditionally contained all pedigree, performance and progeny information now also include results from available genomic, or DNA, tests. Breeders who use genomic technology give buyers access to AGI-generated GE-EPDs that provide:

Increased predictability and decreased risk for young and unproven animals due to enhanced accuracy of EPDs

Better characterization of genetics for difficult-to-measure performance traits (such as carcass traits, maternal traits and feed efficiency)

The ability to make more rapid progress for traits that are important to you, due to:

- more accurate selection
- easier identification of genetic outliers
- the ability to propagate young animals with confidence earlier in their lives

In fact, GE-EPDs on unproven animals have the same amount of accuracy as if they have recorded an average of 15 progeny, depending on the trait. That's valuable insight, offered regularly through the breed's weekly national cattle evaluation.

TRAIT	PROGENY EQUIVALENT	TRAIT	PROGENY EQUIVALENT
Calving Ease Direct	25	Pulmonary Arterial Pressure	17
Calving Ease Maternal	19	Hair Shed Score	8
Birth Weight	23	Heifer Pregnancy	17
Weaning Weight	27	Maternal Milk	35
Yearling Weight	22	Mature Weight	14
Yearling Height	15	Mature Height	9
Dry Matter Intake	11	Carcass Weight	14
Scrotal Circumference	13	Marbling Score	10
Docility	11	Ribeye Area	16
Foot Claw Set	13	Backfat Thickness	13
Foot Angle	13		

How do you know if EPDs are genomic-enhanced?

Ask your breeder, refer to the registration paper, or look for the AGI GE-EPD logo, Angus GS™ powered by partner Neogen or the HD50k by partner Zoetis. These images indicate animals for which genomic testing has been conducted and incorporated by AGI into GE-EPDs



www.angus.org

American Angus Association Selection Tools

Expected Progeny Difference (EPD), is the prediction of how future progeny of each animal are expected to perform relative to the progeny of other animals listed in the database. EPDs are expressed in units of measure for the trait, plus or minus. Interim EPDs may appear on young animals when their performance has yet to be incorporated into the American Angus Association National Cattle Evaluation (NCE) procedures. This EPD will be preceded by an "I", and may or may not include the animal's own performance record for a particular trait, depending on its availability, appropriate contemporary grouping, or data edits needed for NCE.

Accuracy (ACC), is the reliability that can be placed on the EPD. An accuracy of close to 1.0 indicates higher reliability. Accuracy is impacted by the number of progeny and ancestral records included in the analysis.

Calving Ease Direct (CED), is expressed as a difference in percentage of unassisted births, with a higher value indicating greater calving ease in first-calf heifers. It predicts the average difference in ease with which a sire's calves will be born when he is bred to first-calf heifers.

Birth Weight (BW), expressed in pounds, is a predictor of a sire's ability to transmit birth weight to his progeny compared to that of other sires.

Weaning Weight (WW), expressed in pounds, is a predictor of a sire's ability to transmit weaning growth to his progeny compared to that of other sires.

Residual Average Daily Gain (RADG), feed efficiency expressed in pounds per day, is a predictor of a sire's genetic ability for postweaning gain in future progeny compared to that of other sires, given a constant amount of feed consumed.

Yearling Weight (YW), expressed in pounds, is a predictor of a sire's ability to transmit yearling growth to his progeny compared to that of other sires.

Yearling Height (YH), is a predictor of a sire's ability to transmit yearling height, expressed in inches, compared to the that of other sires.

Scrotal Circumference (SC), expressed in centimeters, is a predictor of the difference in transmitting ability for scrotal size compared to that of other sires.

Docility (DOC), is expressed as a difference in yearling cattle temperament, with a higher value indicating more favorable docility in a sire's offspring compared to another sire.

MATERNAL

Heifer Pregnancy (HP), is a selection tool to increase the probability or chance of a sire's daughters becoming pregnant as first-calf heifers during a normal breeding season. A higher EPD is the more favorable direction, and the EPD is reported in percentage units.

Calving Ease Maternal (CEM), is expressed as a difference in percentage of unassisted births, with a higher value indicating greater calving ease in first-calf daughters. It predicts the average ease with which a sire's daughters will calve as first-calf heifers when compared to daughters of other sires.

Maternal Milk (Milk), is a predictor of a sire's genetic merit for milk and mothering ability in his daughters compared to daughters of other sires. In other words, it is that part of a calf's weaning weight attributed to milk and mothering ability.

Mature Weight (MW), expressed in pounds, is a predictor of the difference in mature weight of daughters of a sire compared to the daughters of other sires.

Mature Height (MH), expressed in inches, is a predictor of the difference in mature height of a sire's daughters compared to daughters of other sires.

FOOT SCORE

Claw Set (Claw), is expressed in units of claw-set score. A lower EPD is more favorable, indicating a sire will produce progeny with more ideal claw set, which is toes that are symmetrical, even and appropriately spaced.

Foot Angle (Angle), is expressed in units of foot-angle score. A lower EPD is more favorable, indicating a sire will produce progeny with more ideal foot angle, which is a 45-degree angle at the pastern joint with appropriate toe length and heel depth.

CARCASS

The genetic evaluation produces a single set of EPDs for carcass traits where the units of measure are in trait format and analyzed on an age-constant basis.

Carcass Weight (CW), expressed in pounds, is a predictor of the differences in hot carcass weight of a sire's progeny compared to progeny of other sires.

Marbling (Marb), is expressed as a fraction of the difference in USDA marbling score of a sire's progeny compared to progeny of other sires.

Ribeye Area (RE), expressed in square inches, is a predictor of the difference in ribeye area of a sire's progeny compared to progeny of other sires.

Fat Thickness (Fat), expressed in inches, is a predictor of the differences in external fat thickness at the 12th rib (as measured between the 12th and 13th ribs) of a sire's progeny compared to progeny of other sires.

\$VALUE INDEXES

\$Value Indexes, reported in dollars per head, are multi-trait selection indexes where a higher value suggests more profit. The \$Value is an estimate of how future progeny of each sire are expected to perform, on average, compared to progeny of other sires if sires were randomly mated to cows and if calves were exposed to the same environment.

Maternal Weaned Calf Value (\$M), expressed in dollars per head, predicts profitability differences in progeny due to genetics from conception to weaning. Increased selection pressure on \$M aims to decrease overall mature cow size and improve foot structure and fertility while maintaining weaning weights consistent with today's production.

Weaned Calf Value (\$W), expressed in dollars per head, provides the expected difference in future progeny preweaning performance from birth to weaning. Increased selection pressure on \$W increases weaning and maternal milk traits while increasing mature cow size.

Cow Energy Value (\$EN), expressed in dollars savings per cow per year, assesses differences in cow energy requirements as an expected dollar savings difference in daughters of sires. A larger value is more favorable when comparing two animals. Components for computing \$EN savings difference include lactation energy requirements and energy costs associated with differences in mature cow size.

Feedlot Value (\$F), expressed in dollars per head, is the expected average difference in future progeny performance for postweaning merit compared to progeny of other sires. The underlying objective assumes commercial producers will retain ownership of cattle through the feedlot phase and sell fed cattle on a carcass weight basis with no considerations of premiums or discounts for quality and yield grade.

Grid Value (\$G), expressed in dollars per carcass, is the expected average difference in future progeny performance for carcass grid merit, including quality and yield grade attributes, compared to progeny of other sires.

Beef Value (\$B), expressed in dollars per carcass, represents the expected average differences in the progeny postweaning performance and carcass value compared to progeny of other sires. This index assumes commercial producers wean all male and female progeny, retain ownership of these animals through the feedlot phase, and market these animals on a quality-based carcass grid.

HOW TO READ SALE LOT INFORMATION



ANIMAL NAME

DOB: TATTOO REGISTRATION NUMBER

**PATERNAL GRANDSIRE
SIRE**

PATERNAL GRANDDAM

**MATERNAL GRANDSIRE
DAM**

MATERNAL GRANDDAM

PATERNAL GRANDSIRE'S SIRE
PATERNAL GRANDSIRE'S DAM
PATERNAL GRANDDAM'S SIRE
PATERNAL GRANDDAM'S DAM
MATERNAL GRANDSIRE'S SIRE
MATERNAL GRANDSIRE'S DAM
MATERNAL GRANDDAM'S SIRE
MATERNAL GRANDDAM'S DAM

ANGUS GS
Powered by NEOGEN



Act. BW

205 WT

Yrlg ADJ

CALVING
EASE

CED	BW	WW	YW	MILK
-----	----	----	----	------

Marb	RE	\$M	\$W	\$B	\$C	DAM PRODUCTION
------	----	-----	-----	-----	-----	----------------

CALVING EASE CODES:

Star ratings are a subjective estimate of a bull's calving ease.

- ★ Cows
- ★★ Larger Framed Heifers & Cows
- ★★★ All Heifers & Cows

ACTUAL BIRTH WEIGHT:

The actual weight of the calf within 24 hours after birth, measured in pounds.

205 DAY WEIGHT:

The weaning weight of the calf adjusted to a common age of 205 days and adjusted for the age of the dam, measured in pounds.

YRLG ADJ WEIGHT:

The yearling weight of the calf adjusted to a common age of 365 days and adjusted for age of dam, measured in lbs. Some bulls were not of an age that this could be calculated.

DAM PRODUCTION:

calves — Avg. Ratio
WR - Weaning Ratio
YR - Yearling Ratio

PATHFINDER STATUS:

sign after pedigree names indicate Pathfinder status of that individual.

CAB TARGETING THE BRAND:



Bulls with greater genetic potential to produce calves that meet the most challenging specifications of the Certified Angus Beef® brand.

ANGUS GS:

ANGUS GS Cattle tested will have genomically enhanced EPDs.
Powered by NEOGEN

\$VALUE INDEX

For details on using and understanding Dollar Value Index (i.e. \$M, \$W, \$B & \$C), see pages 9 and 42.

Final Weights, Weight per Day of Age (WDA), and Scrotal Circumference will be available on sale day.

ANGUS BREED AVERAGE EPDS FOR NON-PARENT BULLS

CED	BW	WW	YW	Milk	Doc	Marb	RE	\$M	\$W	\$F	\$G	\$B	\$C
+6	+1.2	+61	+108	+27	+18	+63	+62	+62	+57	+85	+50	+138	+241

ANGUS BREED AVERAGE EPDS FOR NON-PARENT COWS

CED	BW	WW	YW	Milk	Doc	Marb	RE	\$M	\$W	\$F	\$G	\$B	\$C
+6	+1.2	+60	+107	+26	+18	+66	+64	+62	+56	+85	+51	+139	+241

MEET THE FAMILY!



BILL & DOLORES HARRER AND FAMILY
- OCT 23, 2018



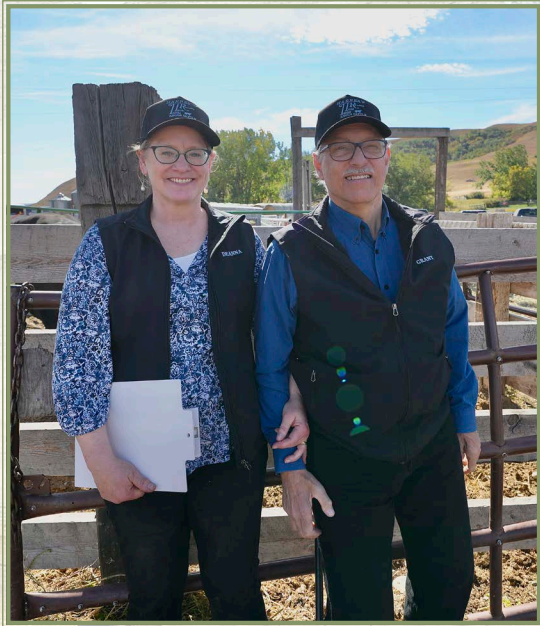
THE THREE AMIGOS:
TRAVIS, BECCA AND AMBER



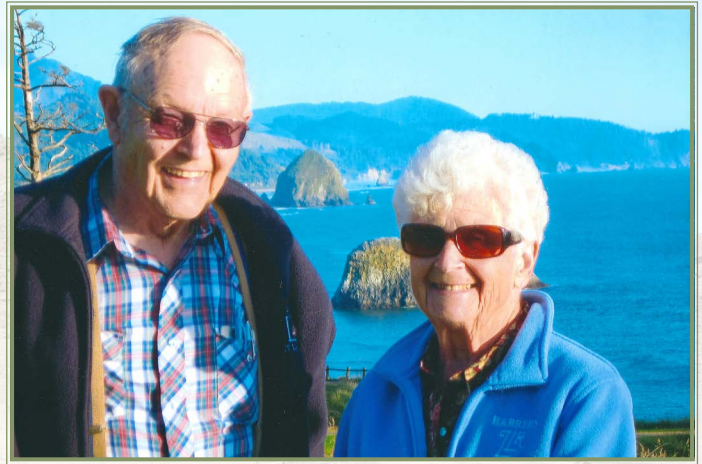
ADDY, AMBER (HARRER) RYLAND &
RANDY BROADBENT



LAURIE, FISK & TRAVIS
HARRER



GRANT & DEANNA HARRER



BILL AND DOLORES HARRER



THE POOCH WITH THE PLAN!



REFERENCE SIRES

8N GENERATION 667

DOB: 02/06/16 TAT: 667 REG: 18563956

CONNEALY CONSENSUS 7229
V A R GENERATION 2100
SANDPOINT BLACKBIRD 8809

HOOVER DAM
8N ENCHANTRESS 119
BASIN ENCHANTRESS R256

CONNEALY CONSENSUS
 BLUE LILLY OF CONANGA 16
 CONNEALY ONWARD
 RIVERBEND BLACKBIRD 430
 SYDGEN C C & 7
 ERICA OF ELLSTON C124
 BASIN FUTURE DIRECTION 203
 BASIN ENCHANTRESS 709M



CED	BW	WW	YW	Milk	
6	1.2	78	140	21	
Marb	RE	\$M	\$W	\$B	\$C
0.55	0.79	47	67	160	255

Generation 667 was purchased from Aiton Angus in Harlowtown, MT in 2017. His EPDs are balanced but especially feature CALVING EASE YET GROWTH PLUS CARCASS ... the combination desired by most commercial breeders. 8 pathfinders in his pedigree.

BAR R JET BLACK 5063

DOB: 07/30/15 TAT: 5063 REG: 18389838

CONNEALY CONSENSUS 7229
CONNEALY BLACK GRANITE
EURA ELGA OF CONANGA 9109

SITZ UPWARD 307R
BAR R IRIS ANITA 0113
BAR R ANITA 7081

CONNEALY CONSENSUS
 BLUE LILLY OF CONANGA 16
 S A V BISMARCK 5682
 EURA CAL OF CONANGA 56B
 CONNEALY ONWARD
 SITZ HENRIETTA PRIDE 81M
 MYTTY IN FOCUS
 BAR R ANITA 5023



CED	BW	WW	YW	Milk	
12	1.4	80	143	23	
Marb	RE	\$M	\$W	\$B	\$C
0.69	0.79	55	75	173	279

Jet Black 5063 starts with powerhouse genetics, converting them to excellent EPDs (with good accuracy). He is in the top 15% of the breed for EPDs of CED, WW, YW, RADG, \$W, \$F, \$B, and \$C. 8 pathfinders in the pedigree.

BASIN INERTIA 0040

DOB: 01/21/2020 TAT: 0040 REG: 19746562

G A R MOMENTUM
G A R INERTIA
G A R PROPHET 2984

CONNEALY CONSENSUS 7229
EXAR ROYAL LASS 2810
EXAR ROYAL LASS 1067

G A R PROGRESS
 G A R BIG EYE 1770
 G A R PROPHET
 G A R DAYBREAK 1521
 CONNEALY CONSENSUS
 BLUE LILLY OF CONANGA 16
 EXAR 263C
 BR ROYAL LASS 19-132



CED	BW	WW	YW	Milk	
5	2.1	73	131	35	
Marb	RE	\$M	\$W	\$B	\$C
0.81	0.63	70	76	148	262

Basin Inertia was described by his breeder as possibly being "the most impressive individual phenotype and structure of any bull produced at Basin Angus". Windy Ridge purchased this bull in March 2021. He is long, deep, and heavily muscled.

BR GRANITE PEAK 914

DOB: 02/05/19 TAT: 914 REG: 19595012

CONNEALY BLACK GRANITE
WELYTOK GRANITE PEAK 5C25
 WELYTOK TOTAL 10 ERIANNA 3B2

MUSGRAVE AVIATOR
BR BLACKBIRD 702
 BR BLACKBIRD 524

CONNEALY CONSENSUS 7229
 EURA ELGA OF CONANGA 9109
 A A R TEN X 7008 S A
 QUAKER HILL ERIANNA 8T2
 KOUPALS B&B IDENTITY
 MCATL FOREVER LADY 1429-138
 MUSGRAVE BIG SKY
 BR BLACKBIRD 310

CED	BW	WW	YW	Milk	
11	0.9	72	140	32	
Marb	RE	\$M	\$W	\$B	\$C
0.41	1.19	73	69	182	309



Granite Peak was purchased at the 2020 Midland Bull Test from the Bullinger Ranch in Dickinson, ND. He has a very strong pedigree, with 7 pathfinders. His EPDs are in the top 15% of the breed for CED, YW, RADG, HP, CEM, Milk, CW, RE, \$F, \$B, and \$C. Quite a package!

CAR HOBSON

DOB: 02/02/19 TAT: G733 REG: 19486075

KG SOLUTION 0018
DL SONIC 444
 DL BARBARA 792

STILL IN THE ROUGH 201
DIAMOND PERFECTION 481E
 DIAMOND PERFECTION 0224

MOGCK SURE SHOT
 KG RITO LADY 8724
 CONNEALY CONSENSUS 7229
 DL BARBARA 1199
 DIAMOND IN THE ROUGH
 DIAMOND BLACKBIRD LADY 6240
 WMR TIMELESS 458
 DIAMOND PERFECTION T587



CED	BW	WW	YW	Milk	
15	-1.8	80	146	22	
Marb	RE	\$M	\$W	\$B	\$C
0.98	0.44	77	72	166	292



CAR Hobson is a top ORigen AI sire. He was the top selling bull in the CARR Bull Sale in 2020. His EPDs are in the top 15% of the breed for CED, BW, WW, YW, RADG, SC, HP, CEM, MW, DOC, PAP, Marb, \$W, and \$C. 7 Pathfinders in the pedigree.

CONNEALY LONE STAR

DOB: 07/11/17 TAT: 70E REG: 19134907

S A V FINAL ANSWER 0035
K C F BENNETT ABSOLUTE
 THOMAS MISS LUCY 5152

PLATTEMERE WEIGH UP K360
ELLEGRA OF CONANGA 527C
 ELSHA OF CONANGA 138V

SITZ TRAVELER 8180
 S A V EMULOUS 8145
 WULFFS EXT 6106
 THOMAS MISS LUCY 3050
 SITZ UPWARD 307R
 BARBARA OF PLATTEMERE 337
 CONNEALY CONSENSUS 7229
 ELGA OF CONANGA 512D



CED	BW	WW	YW	Milk	
12	0.5	81	136	27	
Marb	RE	\$M	\$W	\$B	\$C
1.02	0.64	65	78	149	258



Lone Star is an Alta Beef AI sire. High selling bull at Connealy's 2018 sale. His EPDs are in the top 15% of the breed for CED, WW, YW, Marb, \$W, and \$G. 9 Pathfinders in the pedigree, including both his sire and dam.

FISHER EPIC 884

DOB: 12/15/18 TAT: 884 REG: 19594074



VARILEK PRODUCT 2010 04
3F EPIC 4631
 ZEBU QUEEN 1072
 S A V RENOWN 3439
FROSTY ELBA 3505
 FROSTY ELBA 283

CONNEALY FINAL PRODUCT
 VARILEK PEARL 0006 014
 EF COMPLEMENT 8088
 EXG BLACKCAP 6247 PPC
 RITO 707 OF IDEAL 3407 7075
 S A V BLACKCAP MAY 4136
 SCHIEFELBEIN EFFECTIVE 61
 FROSTY UPWARD 5001



CED	BW	WW	YW	Milk	
6	0.6	64	131	27	
Marb	RE	\$M	\$W	\$B	\$C
0.94	0.36	68	59	165	282

Epic 884 was purchased from Fisher Angus in Okeene, OK at the 2020 Midland Bull Test. His EPDs are in the top 20% of the breed for YW, RADG, SC, HP, CEM, Doc, Marb, \$F, \$B, and \$C. He is especially high in fertility and the \$Values.

G A R KANSAS

DOB: 08/25/18 TAT: 6528 REG: 19266637



G A R EARLY BIRD
G A R ASHLAND
 CHAIR ROCK AMBUSH 1018
 G A R MOMENTUM
CHAIR ROCK MOMENTUM 6057
 CHAIR ROCK SURE FIRE 4060

G A R DAYLIGHT
 G A R PROGRESS 830
 B/R AMBUSH 28
 G A R YIELD GRADE N366
 G A R PROGRESS
 G A R BIG EYE 1770
 G A R SURE FIRE
 CHAIR ROCK CONCRETE 2034



CED	BW	WW	YW	Milk	
15	-0.4	75	138	27	
Marb	RE	\$M	\$W	\$B	\$C
1.8	1.23	49	72	215	328

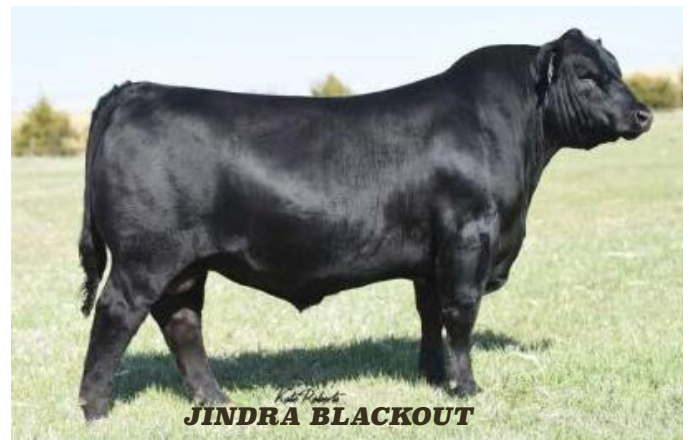
GAR Kansas is an ST Genetics AI sire. Talk about a bull with both phenotype and genotype! His EPDs are in the top 20% of the breed for CED, BW, WW, YW, Marb, RE, Fat, \$W, \$G, \$B, and \$C. Especially note he is in the top 1% for Marbling and Ribeye.

LOST LAKE ECLIPSE H4

DOB: 01/12/2020 TAT: H4 REG: 19883147

JINDRA ACCLAIM
JINDRA BLACKOUT
 JINDRA JUDY J 1314 3150
 KREIN PT SOCKET 534
POWER SOCKET JUANADA LLR
 HEARTLAND JUANADA A112 LLR

JINDRA 3RD DIMENSION
 JINDRA BLACKBIRD LASSY 1111
 G T SHEAR FORCE
 HOFF JUDY S C 669 1314
 PA POWER TOOL 9108
 RIVER HILLS ROSA X374
 M V C C NEBRASKA-1409
 RIGHT JUANADA T122 LLR



CED	BW	WW	YW	Milk	
11	-0.6	69	131	31	
Marb	RE	\$M	\$W	\$B	\$C
0.41	0.73	58	69	142	242

Eclipse H4 is a bull raised by Lost Lake, out of the AI sire Jindra Blackout. Eclipse had a BW of 68 lbs. with both a WR and YR of 105. His EPDs are in the top 20% of the breed for CED, BW, YW, SC, MW, and Doc. Hence, fertility, calving ease and growth!

MARDA SWAGGER 463

DOB: 12/18/2013 TAT: 463 REG: 17864907

CONNEALY TOBIN
CONNEALY CONFIDENCE 0100
 BECKA GALA OF CONANGA 8281
 CONNEALY RIGHT ANSWER 746
MF BLACKBIRD 51
 MF BLACKBIRD 82

BON VIEW NEW DESIGN 208
 DELIA OF CONANGA 667
 CONNEALY THUNDER
 BECKA LEE OF CONANGA 37
 S A V FINAL ANSWER 0035
 HAPPY DELL OF CONANGA 262
 BOYD NEW DAY 8005
 MF MF BLACKBIRD LABEL 72



CED	BW	WW	YW	Milk	
5	1	87	151	24	
Marb	RE	\$M	\$W	\$B	\$C
0.46	0.78	73	78	143	258

Swagger 463 was purchased from Marda Angus Farm, in WI at the 2015 Midland Bull Test for \$19,500. His EPDs are in the top 20% of the breed for WW, YW, YH, CEM, MW, MW, Doc, Angle, PAP, and \$W. Great docility. 6 pathfinders in the pedigree.

POSS RAWHIDE

DOB: 02/11/2019 TAT: 9513 REG: 19416968

BASIN PAYWEIGHT 1682
POSS MAVERICK
 POSS PRIDE 5163
 POSS EASY IMPACT 0119
POSS BLUEBLOOD 6502
 POSS BLUEBLOOD 920

BASIN PAYWEIGHT 006S
 21AR O LASS 7017
 POSS HOOVER DAM 2509
 POSS PRIDE 9526
 POSS TOTAL IMPACT 745
 POSS ELMARETTA 736
 CONNEALY ALL AROUND
 POSS BLUEBLOOD LADY 5114



CED	BW	WW	YW	Milk	
13	-0.3	83	137	30	
Marb	RE	\$M	\$W	\$B	\$C
1.02	0.8	82	85	195	335

Rawhide is an AI sire from ST Genetics. He is a genetic powerhouse ... his EPDs are in the top 20% of the breed for CED, BW, WW, YW, RADG, Doc, PAP, CW, Marb, RE, \$M, \$W, \$F, \$G, \$B, and \$C. Talk about excellent AND balanced traits!

S S BLACK GRANITE D4

DOB: 12/17/2015 TAT: D4 REG: 18538491

CONNEALY CONSENSUS 7229
CONNEALY BLACK GRANITE
 EURA ELGA OF CONANGA 9109
 C R A BEXTOR 872 5205 608
LUCY S S W58
 LUCY S S S71

CONNEALY CONSENSUS
 BLUE LILLY OF CONANGA 16
 S A V BISMARCK 5682
 EURA CAL OF CONANGA 56B
 B A R EXT TRAVELER 205
 CRA LADY JAYE 608 498 S EASY
 MYTTY IN FOCUS
 LUCY S S 75M



CED	BW	WW	YW	Milk	
11	1.7	71	123	31	
Marb	RE	\$M	\$W	\$B	\$C
0.6	0.57	59	90	143	244

Black Granite was purchased from Stewart Select Angus (Greensburg, IN) at the 2017 Midland Bull Test. He invented genetic value with 11 pathfinders in his pedigree! His EPDs are in the top 20% of the breed for CED, YH, SC, Milk, Doc, and \$W.

WOIRHAYE JET SETTER 0755

DOB: 01/10/2020 TAT: 0755 REG: 19769532

CONNEALY BLACK GRANITE
BAR R JET BLACK 5063
 BAR R IRIS ANITA 0113
 PA FORTITUDE 2500
M A R BLACKCAP EMPRESS 1755
 SJH BLACKCAP EMPRESS B013

CONNEALY CONSENSUS 7229
 EURA ELGA OF CONANGA 9109
 SITZ UPWARD 307R
 BAR R ANITA 7081
 GAR-EGL PROTEGE
 G G CLARA 0171
 WERNER WAR PARTY 2417
 B/R BLACKCAP EMPRESS 5293



CED	BW	WW	YW	Milk	
14	-0.3	66	122	31	
Marb	RE	\$M	\$W	\$B	\$C
0.92	0.99	85	71	180	318

Jet Setter was purchased from the Woirhaye Cattle Co (Darby, MT) at the 2021 Midland Bull Test. He was the high indexing bull in Group 2. His EPDs are in the top 20% of the breed for CED, BW, RADG, HP, Milk, Doc, Marb, RE, Fat, \$M, \$W, \$F, \$G, \$B, and \$C.

1**LOST LAKE WAYNE K40**

DOB: 1/20/22 TAT: K40 REG: 20516538

ANGUS 6S
Powered by NEXGEN

DL SONIC 444#
CAR HOBSON
DIAMOND PERFECTION 481E#
K C F BENNETT THEROCK A473#
PRIDE OF THE ROCK H60 LLR
MIXED DRINK PRIDE A27 LLR

KG SOLUTION 0018#
DL BARBARA 792
STILL IN THE ROUGH 201
DIAMOND PERFECTION 0224
K C F BENNETT SOUTHSIDE#
K C F MISS PROTEGE W148
SYDGEN C C & 7#
PRIDE OF LINCOLN Y126 LLR

Act. BW 91
205 WT 792
Yrig ADJ 1312
CALVING EASE ★★

CED	BW	WW	YW	Milk
6	2.3	85	151	23

Marb	RE	\$M	\$W	\$B	\$C	DAM PRODUCTION
0.92	0.42	56	68	181	291	1 WR 117. 1 YR 115

- Wayne K40 Has a WR of 117 and a YR of 115.
- Has a superb and balanced EPD matrix.
- Genomically, he ranks in the top 6% for WW and top 10% for YW; also in the top 16% for SC, top 3% for CEM, and top 14% for Marb,
- 6 Pathfinders in his pedigree.
- Dam is a first calf heifer.
- A bull that stands out in the group, long body and correct in his design.

**LOT 1****2****WINDY RIDGE HOBSON 202**

DOB: 1/14/22 TAT: 202 REG: 20454866

ANGUS 6S
Powered by NEXGEN

DL SONIC 444#
CAR HOBSON
DIAMOND PERFECTION 481E#
A J R EPIC 8126
WINDY RIDGE CLASSIC 029
WINDY RIDGE FIDELITY 617#

KG SOLUTION 0018#
DL BARBARA 792
STILL IN THE ROUGH 201
DIAMOND PERFECTION 0224
3F EPIC 4631#
A J R QUEEN HELEN 2204
R B TOUR OF DUTY 177#
WINDY RIDGE FIDELITY 341

Act. BW 74
205 WT 724
Yrig ADJ 1247
CALVING EASE ★★★

CED	BW	WW	YW	Milk
7	0.2	81	144	34

Marb	RE	\$M	\$W	\$B	\$C	DAM PRODUCTION
0.66	0.83	75	82	167	292	1 WR 99. 1 YR 101

- Hobson 202 has calving ease, feed efficiency, great carcass, an HP of 17.9 and a very good PAP score of -0.10.
- Dam is a first calf heifer.
- Growthy bull.

**LOT 2****3****WINDY RIDGE HOBSON 203**

DOB: 1/15/22 TAT: 203 REG: 20454868

ANGUS 6S
Powered by NEXGEN

DL SONIC 444#
CAR HOBSON
DIAMOND PERFECTION 481E#
CURTIN 1682 PAYWEIGHT 7032
WINDY RIDGE DARLING 010
WINDY RIDGE DARLING 017

KG SOLUTION 0018#
DL BARBARA 792
STILL IN THE ROUGH 201
DIAMOND PERFECTION 0224
BASIN PAYWEIGHT 1682#
CURTIN ERICA 3104#
LDA 7510 IMAGE MAKER
WINDY RIDGE DARLING 843

Act. BW 88
205 WT 763
Yrig ADJ 1253
CALVING EASE ★★

CED	BW	WW	YW	Milk
4	0.6	83	142	31

Marb	RE	\$M	\$W	\$B	\$C	DAM PRODUCTION
0.74	0.46	75	82	162	285	1 WR 105. 1 YR 101

- Hobson 203 had a 205 day weight of 763 lbs. and has a WW EPD of 83.
- HP is 18.5.
- Dam is a first calf heifer.

4**LOST LAKE POET K253**

DOB: 2/25/22 TAT: K253 REG: 20516520

ANGUS 6S
Powered by NEXGEN

3F EPIC 4631#
FISHER EPIC 884
FROSTY ELBA 3505
SYDGEN EXCEED 3223#
FOREVER LADY F64 LLR#
LADY LOCKET Z143 LLR

VARILEK PRODUCT 2010 04
ZEBO QUEEN 1072
S A V RENOWN 3439#
FROSTY ELBA 283
SYDGEN GOOGOL
SYDGEN FOREVER LADY 1255
LOST LAKE CHAIN
DESIGN LADY U289 LLR

Act. BW 86
205 WT 746
Yrig ADJ 1234
CALVING EASE ★★

CED	BW	WW	YW	Milk
7	0.8	73	129	28

Marb	RE	\$M	\$W	\$B	\$C	DAM PRODUCTION
0.86	0.49	79	71	169	298	3 WR 105. 3 YR 104

- Poet K253 had both a WR and a YR of 106.
- His EPD matrix is exemplary.
- Genomically, he ranks in the top 1% of the breed for SC and CEM. Also ranking in top 15% for WW, top 18% for YW and top 8% for CWT.
- His Dam is a young top producer who just made Pathfinder status.
- Exemplary in his design was well.

5**LOST LAKE LEGEND K200**

DOB: 2/16/22 TAT: K200 REG: 20516513

ANGUSGS
Powered by MOODY3F EPIC 4631#
FISHER EPIC 884
FROSTY ELBA 3505V N A R T E N X 3304
TEN X ANNE F271 LLR
NETWORK ANNE Y308 LLRVARILEK PRODUCT 2010 04
ZEBO QUEEN 1072
S A V RENOWN 3439#
FROSTY ELBA 283
A A R T E N X 7008 S A#
V N A R K E M 8047
FOUR ACE GRIDIRON 801
CONTRACT ANNE 2816 LLRAct. BW 80
205 WT 740
Yrig ADJ 1206
CALVING EASE ★★★

CED	BW	WW	YW	Milk
5	0.2	70	123	28

Marb	RE	\$M	\$W	\$B	\$C	DAM PRODUCTION
1.01	0.4	77	70	160	285	3 WR 100. 2 YR 104

- Legend K200 has a WR of 106 and a YR of 104.
- Genomically, he ranks in the top 2% for Docility and top 4% for CEM.
- Dam is a top producing cow.
- Long bodied bull, combines a stout structure with athletic ability.

*The Boys lining up for dinner***6****LOST LAKE LEGEND K342**

DOB: 3/11/22 TAT: K342 REG: 20516532

ANGUSGS
Powered by MOODY3F EPIC 4631#
FISHER EPIC 884
FROSTY ELBA 3505LOST LAKE PROFESSOR Y411
PROFESSORS PRIMROSE B87 LLR
ROSE ANSWER Y59 LLRVARILEK PRODUCT 2010 04
ZEBO QUEEN 1072
S A V RENOWN 3439#
FROSTY ELBA 283
KG WISDOM 9402
LEAD ON WENDY 1286 DRF
SO FINAL ANSWER 743-09
KOCKOUT ROSE W50 LLR#Act. BW 82
205 WT 666
Yrig ADJ 1173
CALVING EASE ★★★

CED	BW	WW	YW	Milk
7	1.2	60	113	27

Marb	RE	\$M	\$W	\$B	\$C	DAM PRODUCTION
0.81	0.31	55	56	135	230	7 WR 98. 2 YR 95

- Legend K342 is a heifer bull out of Fisher Epic 884.
- He has been a top gainer in this sale offering.
- Don't overlook this heifer bull, he is solid in his design and should add pounds to your calves.

**LOT 6****7****NWD LAUNCH 231**

DOB: 2/7/22 TAT: 231 REG: 20487437

ANGUSGS
Powered by MOODYCASINO BOMBER N33
EXAR GRENADE 9152B
EXAR MERLE 7441PA POWER TOOL 9108#
NWD POWER MAID 416
NWD DAWNS NEW MAID 125KM BROKEN BOW 002#
CASINO ANNIE K48#
SITZ TOP GAME 561X#
EXAR MERLE 2550
G A R PREDESTINED#
SHAMROCKS BEEBEE QUEEN 3095
MCC DAYBREAK#
WINDY RIDGE FAME'S MAID 206Act. BW 97
205 WT 703
Yrig ADJ 1266
CALVING EASE ★

CED	BW	WW	YW	Milk
5	2.5	100	170	34

Marb	RE	\$M	\$W	\$B	\$C	DAM PRODUCTION
1.03	1.12	78	95	192	327	7 WR 101. 7 YR 101

- Launch 231 has a WW EPD of 100.
- Fantastic carcass traits with EPDS of 1.03 for Marb and 1.11 for RE.
- Dam is an extremely consistent calver with her calves born between Feb 3 and Feb 17 for the past 7 years.

**LOT 7**

8

KDS GRENADE 220

DOB: 2/1/22 TAT: 220 REG: 20491667

ANGUSGS
Powered by NEXGEN

CASINO BOMBER N33
EXAR GRENADE 9152B
EXAR MERLE 7441

GRANGER POWERLINE 560
KDS BEES KNEES 843
KDS GIDDY KIPPER 306

KM BROKEN BOW 002#
CASINO ANNIE K48#
SITZ TOP GAME 561X#
EXAR MERLE 2550
PA POWER TOOL 9108#
CURTIN ERROLINE 3039
HOOVER DAM#
KDS MARA JUANA 618

Act. BW 82
205 WT 693
Yrig ADJ 1229
CALVING EASE ★★★★★

CED	BW	WW	YW	Milk
11	0	72	124	38

Marb	RE	\$M	\$W	\$B	\$C	DAM PRODUCTION
0.61	0.72	81	83	148	273	2 WR 99. 2 YR 104

- Grenade 220 is a beefy bull, deep sided and growthy.
- He has a high HP EPD and an optimal calving ease EPD ... a perfect combination.



LOT 8

9

LOST LAKE PAY DAY K226

DOB: 2/20/22 TAT: K226 REG: 20516516

ANGUSGS
Powered by NEXGEN

BASIN PAYCHECK 5249#
BASIN PAYCHECK 0661
BASIN HEATHER BLOOM 6235

BYERGO/DOUBLE GG BLACKSTONE
BLACK QUEEN G10 LLR
QUEEN OF THE BALL E46 LLR

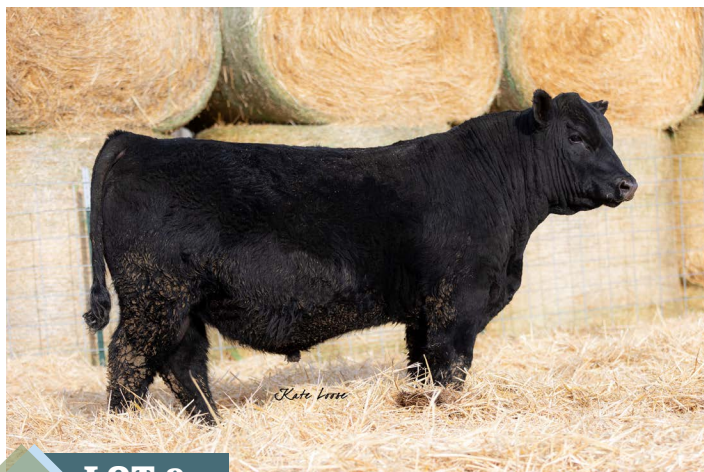
BASIN PAYWEIGHT 1682#
BASIN LUCY 3150
V A R DISCOVERY 2240#
BASIN HEATHER BLOOM 4213
BYERGO BLACK MAGIC 3348
BYERGO MAY 2871
MARDA SWAGGER 463
ASTUTE QUEEN A227 LLR

Act. BW 98
205 WT 706
Yrig ADJ 1223
CALVING EASE ★

CED	BW	WW	YW	Milk
-2	3.5	80	143	25

Marb	RE	\$M	\$W	\$B	\$C	DAM PRODUCTION
0.58	0.66	70	66	166	285	2 WR 108. 2 YR 109

- Pay Day K226 has a WR of 101 and a YR of 106. You will wean heavy calves with him ... genomically ranks in top 3% for WW and top 9% for YW.
- A lot of bull power in his pedigree and a top producing dam.



LOT 9

10

LOST LAKE BANKER K217

DOB: 2/18/22 TAT: K217 REG: 20516515

ANGUSGS
Powered by NEXGEN

BASIN PAYCHECK 5249#
BASIN PAYCHECK 0661
BASIN HEATHER BLOOM 6235

G A R ANTICIPATION
EAGER EOLA G6 LLR
CONSENSUS EOLA E342 LLR

BASIN PAYWEIGHT 1682#
BASIN LUCY 3150
V A R DISCOVERY 2240#
BASIN HEATHER BLOOM 4213
MCC DAYBREAK#
G A R 5050 NEW DESIGN 0530
MCCALL CONSENSUS 4092
SEVEN SEAS EOLA B267 LLR

Act. BW 78
205 WT 687
Yrig ADJ 1221
CALVING EASE ★★★★★

CED	BW	WW	YW	Milk
7	-0.3	66	125	29

Marb	RE	\$M	\$W	\$B	\$C	DAM PRODUCTION
1	0.63	69	68	188	313	2 WR 98. 1 YR 106

- Banker K217 has a YR of 106. His EPDs especially speak to good maternal and carcass traits.
- Many iconic animals in his pedigree.
- Complete package in his phenotype.

11

LOST LAKE PAY OFF K318

DOB: 3/6/22 TAT: K318 REG: 20520926

ANGUSGS
Powered by NEXGEN

BASIN PAYCHECK 5249#
BASIN PAYCHECK 0661
BASIN HEATHER BLOOM 6235

MCCALL CONSENSUS 4092
PRIDE OF ACCORD G179 B & D
PROVEN PRIDE A392 B & D

BASIN PAYWEIGHT 1682#
BASIN LUCY 3150
V A R DISCOVERY 2240#
BASIN HEATHER BLOOM 4213
CONNEALY CONSENSUS 7229#
MCCALL FA BARB PERFECTION102
LOST LAKE CREDENCE X24
PROUD LINK X252 B&D#

Act. BW 96
205 WT 780
Yrig ADJ 1206
CALVING EASE ★

CED	BW	WW	YW	Milk
2	3.9	86	156	18

Marb	RE	\$M	\$W	\$B	\$C	DAM PRODUCTION
0.54	0.7	51	61	163	262	2 WR 112. 2 YR 108

- Pay Off K318 is one of our top gaining bulls.
- He has a NR of 111 and YR of 104.
- Genomically, he has fertility ranking in the top 6% for SC and top 9% for HP. He comes by the gain honestly ranking in the top 3% for WW and the top 5% for YW.
- His dam is young but has shown herself to be a top producing cow.
- Have to appreciate his growth and powerful design.

12 LOST LAKE DEPOSIT K298

DOB: 3/4/22 TAT: K298 REG: 20516525

ANGUS GS
POWERED BY NECCOR



BASIN PAYCHECK 5249#
BASIN PAYCHECK 0661
BASIN HEATHER BLOOM 6235

APEX VANGUARD 136
STAR LIGHT G191 LLR

STEAL DAY LIGHT U241 LLR

BASIN PAYWEIGHT 1682#
BASIN LUCY 3150
V A R DISCOVERY 2240#
BASIN HEATHER BLOOM 4213
LOST LAKE VANGUARD 1504
APEXETTE BELL 4019
ALC STEAL S27S
GOLDEN ECLIPSE 682 LLR

Act. BW 82
205 WT 733
Yrig ADJ 1173
CALVING EASE ★★★

CED	BW	WW	YW	Milk
7	1.3	72	120	29

Marb	RE	\$M	\$W	\$B	\$C	DAM PRODUCTION
0.98	0.87	71	75	177	301	1 WR 105. 1 YR 102

- Deposit K298 is a heifer bull with a WR of 105 and a YR of 102.
- He has a nice EPD matrix, especially for carcass traits.
- In fact, genomically he ranks in the top 12% for CWI, top 26% for Marb and top 11% for RE. He also ranks 18% for WW and in the top 6% for HP.
- Sire was purchased from Basin Angus Ranch in 2021.
- This flashy bull stands on an impressive foot and bone.

14 LOST LAKE HARD ROCK K184

DOB: 2/14/22 TAT: K184 REG: 20516510

ANGUS GS
POWERED BY NECCOR



WELYTOK GRANITE PEAK 5C25
BR GRANITE PEAK 914
BR BLACKBIRD 702

KPHU 4007
UPTOWN EVERELLA E163 LLR
EVERELLA COLLABORATE Y2 LLR

CONNEALY BLACK GRANITE#
WELYTOK TOTAL 10 ERIANNA 3B2
MUSGRAVE AVIATOR#
BR BLACKBIRD 524
CONNEALY UPTOWN 098E#
KPHU 1004
WAR ALLIANCE 9126 6006#
EVERELLA STOLEN W333 LLR

Act. BW 90
205 WT 688
Yrig ADJ 1166
CALVING EASE ★★

CED	BW	WW	YW	Milk
10	1	66	119	33

Marb	RE	\$M	\$W	\$B	\$C	DAM PRODUCTION
0.58	1.08	91	70	155	292	4 WR 97. 1 YR 101

- Hard Rock K184 has a very strong maternal foundation from an EPD standpoint; and a very high HP EPD.
- Genomically, he ranks in the top 2% for HP.
- A bull that truly impresses you with overall depth and body mass, he will inject a lot of muscle and dimension into his calves.

15 LOST LAKE ROCK HARD K151

DOB: 2/8/22 TAT: K151 REG: 20516508

ANGUS GS
POWERED BY NECCOR



WELYTOK GRANITE PEAK 5C25
BR GRANITE PEAK 914
BR BLACKBIRD 702

CAN AM UPSHOT 311
UPLAND EOLA F102 LLR
SEVEN SEAS EOLA B267 LLR

CONNEALY BLACK GRANITE#
WELYTOK TOTAL 10 ERIANNA 3B2
MUSGRAVE AVIATOR#
BR BLACKBIRD 524
EXAR UPSHOT 0562B#
CAN AM PRIDE 907#
LOST LAKE PIRATE Y1
RIGHT EOLA X56 LLR

Act. BW 72
205 WT 719
Yrig ADJ 1111
CALVING EASE ★★★

CED	BW	WW	YW	Milk
9	0.5	69	120	22

Marb	RE	\$M	\$W	\$B	\$C	DAM PRODUCTION
0.7	0.77	75	63	166	290	3 WR 107. 2 YR 101

- Rock Hard K151 had a WR of 103 with 58 contemporaries.
- He has a nice EPD matrix.
- Genomically ranks in the top 1% for CEM and the top 4% for HP.
- Dam is a high producer.
- Rugged made attractive bull who is sound made

13 LOST LAKE GRANITE WALL K209

DOB: 2/18/22 TAT: K209 REG: 20536252

ANGUS GS
POWERED BY NECCOR



WELYTOK GRANITE PEAK 5C25
BR GRANITE PEAK 914
BR BLACKBIRD 702

KG WISDOM 9402
POISED PRIDE B337 B&D
PROUD LINK X252 B&D#

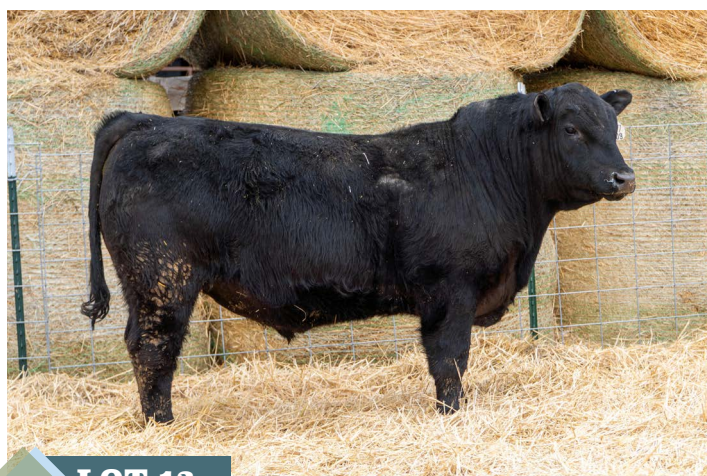
CONNEALY BLACK GRANITE#
WELYTOK TOTAL 10 ERIANNA 3B2
MUSGRAVE AVIATOR#
BR BLACKBIRD 524
SITZ WISDOM 481T#
DJ BARBARA PERFECTION S034#
LOST LAKE BREAKING NEWS
HM PRIDE B&D 4

Act. BW 84
205 WT 721
Yrig ADJ 1260
CALVING EASE ★★

CED	BW	WW	YW	Milk
11	1.4	69	141	36

Marb	RE	\$M	\$W	\$B	\$C	DAM PRODUCTION
0.15	0.54	59	65	150	254	6 WR 105. 6 YR 105

- Granite Wall K209 has the highest WDA of any bull in this sale offering.
- WR is 103 and YR is 109.
- He comes by it honestly with a genomic ranking for YW in top 1%. Also ranks in top 22% for CED and top 4% for CEM.
- Dam is a consistent top producer.



LOT 13

16 LOST LAKE SWAGGER K105

DOB: 2/3/22 TAT: K105 REG: 20536112

ANGUS GS
POWERED BY NECCOR



CONNEALY CONFIDENCE 0100#
MARDA SWAGGER 463
MF BLACKBIRD 51

KG WISDOM 9402
I Q PRIDE A271 B & D
B&D MISS PRIDE 137

CONNEALY TOBIN
BECKA GALA OF CONANGA 8281
CONNEALY RIGHT ANSWER 746#
MF BLACKBIRD 82
SITZ WISDOM 481T#
DJ BARBARA PERFECTION S034#
LOST LAKE VANGUARD 1584
LUKES PRIDE B&D 346

Act. BW 79
205 WT 749
Yrig ADJ 1216
CALVING EASE ★★★

CED	BW	WW	YW	Milk
9	0.4	72	127	22

Marb	RE	\$M	\$W	\$B	\$C	DAM PRODUCTION
0.17	0.37	72	67	103	206	7 WR 101. 4 YR 99

- Swagger K105 is a superb heifer bull for this year and will make a great cow bull for future years!
- His WR is 107 and YR is 106.
- Maternal EPDs are especially strong.
- He is a top gainer.
- Genomically he ranks in the top 9% for docility.
- Marda Swagger 463 is a foundation sire for the Lost Lake herd.

17**WINDY RIDGE DELUXE 206**

DOB: 1/20/22 TAT: 206 REG: 20454827



V A R DISCOVERY 2240#
DIABLO DELUXE 1104
 DIABLO ERICA DIANNA 9034

A A R TEN X 7008 S A#
 DEER VALLEY RITA 0308
 G A R PROPHET#
 DIABLO ERICA DIANNA 5010
 PRAIRIE PRIDE PREMIUM 407
 HILLTOP CINDERELLA 39#
 WINDY RIDGE WIB 507
 WINDY RIDGE FIDELITY 617#

Act. BW 82
 205 WT 751
 Yrig ADJ 1314
 CALVING EASE ★★★

CED	BW	WW	YW	Milk
9	0.3	83	155	29

Marb	RE	\$M	\$W	\$B	\$C	DAM PRODUCTION
0.62	0.61	58	75	177	288	1 WR 103. 1 YR 106

- Deluxe 206 has an excellent weaning EPD of 83.
- 365 day weight was 1314 lbs.
- However, overall his EPDs were well balanced.
- Dam is a first calf heifer.
- A wide topped bull whose calves will impress you on the scale,

**LOT 17****18****LOST LAKE ACCLAIM K188**

DOB: 2/14/22 TAT: K188 REG: 20516511



C BAR UNCONTESTED 6209
HILLTOP UNCONTESTED 482H
 HILLTOP BLACKCAP 260

S A V TEN SPEED 3022#
 C BAR FOREVER LADY 405
 HILLTOP ENTENSE THUNDER 0216
 HT BLACKCAP CP 890#
 CONNEALY CONFIDENCE 0100#
 MF BLACKBIRD 51
 M V C C NEBRASKA-1409
 PLAYERS PRIDE U261 LLR

Act. BW 91
 205 WT 721
 Yrig ADJ 1198
 CALVING EASE ★

CED	BW	WW	YW	Milk
2	3.7	68	123	20

Marb	RE	\$M	\$W	\$B	\$C	DAM PRODUCTION
0.44	0.52	63	49	149	256	4 WR 97. 2 YR 100

- Acclaim K188's sire was purchased from Hilltop Angus in Denton, MT in 2021.
- Acclaim has a WR of 103 and a YR of 104.
- He should pass on the growth ... genomically ranks in the top 15% for YW and the top 20% for WW.
- Also ranks in the top 9% for Docility.
- Dam is a daughter of Swagger.

19**LOST LAKE PACIFIC K80**

DOB: 1/31/22 TAT: K80 REG: 20536581



HOOVER NO DOUBT
STERLING PACIFIC 904
 BALDRIDGE ISABEL B082

MOGCK BULLSEYE#
 MISS BLACKCAP ELLSTON J2
 G A R PROPHET#
 BALDRIDGE ISABEL Y69
 SITZ UPWARD 307R#
 B&B ERICA 605#
 A A R TEN X 7008 S A#
 BLACK OBJECT Y35 LLR

KOUPALS B&B IDENTITY#
BLACK IDENTITY C5 LLR
 BLACKCAP IN FOCUS A24 LLR

Act. BW 94
 205 WT 678
 Yrig ADJ 1280
 CALVING EASE ★★

CED	BW	WW	YW	Milk
6	2	87	160	25

Marb	RE	\$M	\$W	\$B	\$C	DAM PRODUCTION
1.21	0.78	75	77	199	333	6 WR 92. 4 YR 104

- Pacific K80 has just gotten better as he grows up, with a YR of 111.
- His EPDs are hard to beat ... by anyone!
- Genomically, he has great depth in the numbers ... ranking in the top 16% for CED and top 8% for CEM, top 6% for WW and top 5% for YW, and the top 6% Marb and the top 29% RE.
- His pedigree is stacked with famous individuals including his sire, known for tremendous performance yet maternal strength.

20**LOST LAKE BLACK CURRENT K88**

DOB: 2/1/22 TAT: K88 REG: 20516549



HOOVER NO DOUBT
STERLING PACIFIC 904
 BALDRIDGE ISABEL B082

MOGCK BULLSEYE#
 MISS BLACKCAP ELLSTON J2
 G A R PROPHET#
 BALDRIDGE ISABEL Y69
 BV PINPOINT 1045
 BASIN TROJAN ERICA U683
 SYDGEN C C & 7#
 PRIDE OF LINCOLN Y126 LLR

Act. BW 86
 205 WT 708
 Yrig ADJ 1156
 CALVING EASE ★★

CED	BW	WW	YW	Milk
6	1	76	140	22

Marb	RE	\$M	\$W	\$B	\$C	DAM PRODUCTION
0.83	1.1	69	65	188	313	5 WR 97. 4 YR 102

- Black Current K88 has a NR of 101 and a YR of 100.
- He carries a lot of genomic strength as manifested in his EPDs.
- Genomically, he ranks in the top 11% for HP, in the top 32% for WW plus the top 9% for YW, but perhaps his greatest strength is ranking in carcass traits: top 11% for CWT, top 30% for Marb and top 5% for RE.
- Good growth bull that will produce calves that grow well and hang on the rail with excellence.

21**WINDY RIDGE PAYWEIGHT 242**

DOB: 2/25/22 TAT: 242 REG: 20453850



BASIN PAYWEIGHT 1682#
S S PAYWEIGHT F111
 EVENTRESS S S Y66

BASIN PAYWEIGHT 006S#
 21AR O LASS 7017
 SYDGEN MANDATE 6079#
 EVENTRESS S S U179#
 SYDGEN GOOGOL
 EXAR QUEEN 3210
 S A F CONNECTION#
 WINDY RIDGE MISS BAILEY 614

SYDGEN GOOGOL 3054
WINDY RIDGE SUNRISE 753
 WINDY RIDGE SUNRISE 018

Act. BW 88
 205 WT 743
 Yrig ADJ 1221
 CALVING EASE ★★

CED	BW	WW	YW	Milk
10	1.5	58	98	37

Marb	RE	\$M	\$W	\$B	\$C	DAM PRODUCTION
0.96	0.61	78	68	165	292	4 WR 101. 2 YR 97

- Payweight 242 is a high marbling bull with good foot EPDs.
- Notice the width and upper hip shape this bull offers.

22 KDS GONNA BE A PAYDAY 237

DOB: 2/17/22 TAT: 237 REG: 20490642 **ANGUS GS**
Powered by NEGENE

BASIN PAYWEIGHT 1682#
S S PAYWEIGHT F111
EVENTRESS S S Y66

WINDY RIDGE SWAGGER 714
JKS KIDDY KIPPER 949
KDS GIDDY KIPPER 306

BASIN PAYWEIGHT 006S#
21AR O LASS 7017
SYDGEN MANDATE 6079#
EVENTRESS S S U179#
MARDA SWAGGER 463
WINDY RIDGE ROSE 312
HOOVER DAM#
KDS MARA JUANA 618

Act. BW	80
205 WT	744
Yrly ADJ	1245
CALVING EASE	★★★★

CED	BW	WW	YW	Milk
14	-1.3	82	129	32

Marb	RE	\$M	\$W	\$B	\$C	DAM PRODUCTION
0.35	0.58	80	91	125	242	2 WR 102. 2 YR 95

- Gonna Be a Pay Day 237 is an ideal sire for the Cow-Calf rancher ... Low BW EPD and a high WW EPD!
- PAP Score EPD is excellent for high altitudes.

23 WINDY RIDGE INERTIA 209

DOB: 1/22/22 TAT: 209 REG: 20453849 **ANGUS GS**
Powered by NEGENE

G A R INERTIA
BASIN INERTIA 0040
EXAR ROYAL LASS 2810

DL SONIC 444#
W R BEMINDFUL MAID 804
W R BEMINDFUL MAID 225

G A R MOMENTUM
G A R PROPHET 2984
CONNELLY CONSENSUS 7229#
EXAR ROYAL LASS 1067
KG SOLUTION 0018#
DL BARBARA 792
MF FINAL ANSWER 052
W R BEMINDFUL MAID 515

Act. BW	82
205 WT	674
Yrly ADJ	1266
CALVING EASE	★★★★

CED	BW	WW	YW	Milk
7	0.8	76	135	29

Marb	RE	\$M	\$W	\$B	\$C	DAM PRODUCTION
0.72	0.64	73	78	144	260	3 WR 95. 3 YR 96

- Inertia 209 has superior growth ... he had the top yearling weight of all the Windy Ridge calves out of cows.
- You have to notice his overall width as he walks away from you.

24 NWD 1ST LAW 217

DOB: 1/31/22 TAT: 217 REG: 20486166 **ANGUS GS**
Powered by NEGENE

G A R INERTIA
BASIN INERTIA 0040
EXAR ROYAL LASS 2810

WINDY RIDGE GENESIS 618
NWD LUCKYS MAID 923
NWD POWER MAID 416

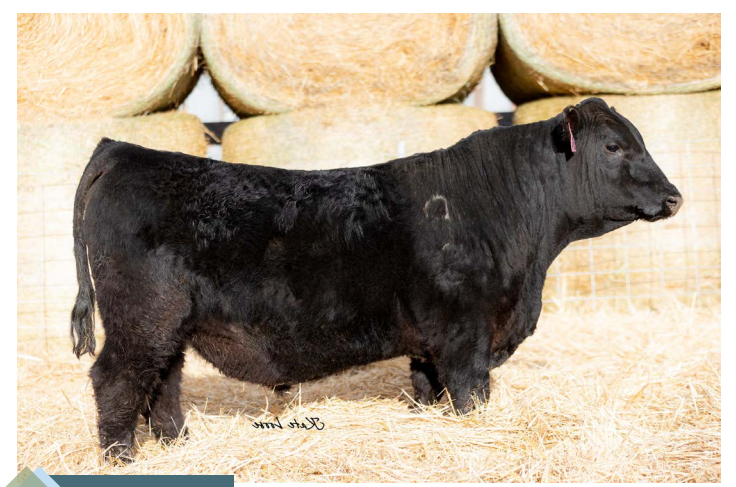
G A R MOMENTUM
G A R PROPHET 2984
CONNELLY CONSENSUS 7229#
EXAR ROYAL LASS 1067
V A R GENERATION 2100#
WINDY RIDGE MOLLY 919
PA POWER TOOL 9108#
NWD DAWNS NEW MAID 125

Act. BW	80
205 WT	686
Yrly ADJ	1172
CALVING EASE	★★★★

CED	BW	WW	YW	Milk
3	1.3	71	127	28

Marb	RE	\$M	\$W	\$B	\$C	DAM PRODUCTION
0.85	0.32	67	67	161	276	2 WR 101. 2 YR 102

- First Law 217 is well balanced in all EPDs.
- Great foot EPDs.
- A bull that truly impresses you with over all depth and body mass, he will inject a lot of muscle and dimension into his calves.



LOT 23

25 WINDY RIDGE RISE UP 256

DOB: 3/11/22 TAT: 256 REG: 20453852 **ANGUS GS**
Powered by NEGENE

BAR R JET BLACK 5063
WOIRHAYE JET SETTER 0755
M A R BLACKCAP EMPRESS 1755

A A R TEN X 7008 S A#
WINDY RIDGE BRAZEN LADY 512
WINDY RIDGE BRAZEN LADY 916

CONNELLY BLACK GRANITE#
BAR R IRIS ANITA 0113
PA FORTITUDE 2500#
SJH BLACKCAP EMPRESS B013
MYTTY IN FOCUS#
A A R LADY KELTON 5551#
CONNELLY FORWARD#
WINDY RIDGE FIDELITY 209

Act. BW	85
205 WT	779
Yrly ADJ	1190
CALVING EASE	★★

CED	BW	WW	YW	Milk
16	-0.5	70	126	25

Marb	RE	\$M	\$W	\$B	\$C	DAM PRODUCTION
0.53	0.79	86	66	146	275	6 WR 107. 4 YR 103

- Rise Up 256 is a calving ease bull with a high HP EPD of 21.5.
- Should be feed efficient.
- He is out of a top producing dam who has BR of 99 for 6 calves, NR of 107 for 6 calves and a YR of 105 for 3 calves.

26 LOST LAKE SUPERSONIC K172

DOB: 2/12/22 TAT: K172 REG: 20462681 **ANGUS GS**
Powered by NEGENE

BAR R JET BLACK 5063
WOIRHAYE JET SETTER 0755
M A R BLACKCAP EMPRESS 1755

BYERGO/DOUBLE GG BLACKSTONE
BLACK DIAMOND GERRI G66 LLR
LONG SHOT GERALDINE C43 LLR

CONNELLY BLACK GRANITE#
BAR R IRIS ANITA 0113
PA FORTITUDE 2500#
SJH BLACKCAP EMPRESS B013
BYERGO BLACK MAGIC 3348
BYERGO MAY 2871
CAN AM UPSHOT 311
GERALDINE A310 LLR

Act. BW	88
205 WT	735
Yrly ADJ	1180
CALVING EASE	★★

CED	BW	WW	YW	Milk
11	1.3	71	125	36

Marb	RE	\$M	\$W	\$B	\$C	DAM PRODUCTION
0.87	0.79	86	78	174	312	1 WR 105. 1 YR 103

- Supersonic K172 has a WR of 105 and YR of 103.
- He has a near flawless EPD matrix.
- Genomically, ranks in the top 1% for Docility, top 5% for SC (fertility) and top 6% for DMI (feed efficiency).
- Complete package!

27

WINDY RIDGE JET SETTER 244

DOB: 2/26/22 TAT: 244 REG: 20453851



BAR R JET BLACK 5063
WOIRHAYE JET SETTER 0755
 M A R BLACKCAP EMPRESS 1755

CONNEALY BLACK GRANITE#
 BAR R IRIS ANITA 0113
 PA FORTITUDE 2500#
 SJH BLACKCAP EMPRESS B013
 V A R GENERATION 2100#
 WINDY RIDGE MOLLY 919
 SYDGEN TRUST 3008
 WINDY RIDGE MISS BAILEY 413



Act. BW 68
 205 WT 742
 Yrfg ADJ 1160
 CALVING EASE ★★★

CED	BW	WW	YW	Milk
18	-2.7	61	107	18

Marb	RE	\$M	\$W	\$B	\$C	DAM PRODUCTION
0.77	0.93	75	58	167	292	2 WR 105. 1 YR 96

- Jet Setter 244 is a calving ease bull.
- He will add carcass value to your herd.
- Has a good PAP EPD for high altitudes.
- Good quality bull that is thick and powerful in his design.

28

LOST LAKE BOEING K361

DOB: 3/18/22 TAT: K361 REG: 20516534



BAR R JET BLACK 5063
WOIRHAYE JET SETTER 0755
 M A R BLACKCAP EMPRESS 1755

CONNEALY BLACK GRANITE#
 BAR R IRIS ANITA 0113
 PA FORTITUDE 2500#
 SJH BLACKCAP EMPRESS B013
 CONNEALY SULLIVAN 83A#
 LOST LAKE DOUBLE DATE W128#
 MF CC&7 72
 POCKET BOOK LASS Y236 LLR



Act. BW 81
 205 WT 716
 Yrfg ADJ 1146
 CALVING EASE ★★★

CED	BW	WW	YW	Milk
9	0.8	60	105	16

Marb	RE	\$M	\$W	\$B	\$C	DAM PRODUCTION
0.87	0.5	49	45	165	263	1 WR 102. 1 YR 99

- Boeing K361 has balanced EPDs with an emphasis on maternal (he is a heifer bull).
- This is reflected in his genomics as well as ranking in the top 8% for SC and the top 17% for Docility.
- His shoulder design is smooth and correct.

29

LOST LAKE WILD FIRE K261

DOB: 2/26/22 TAT: K261 REG: 20516523



QUAKER HILL FIRESTORM 3PT1
LOST LAKE HOT SHOT F76
 GUARDED BESS Z5 LLR

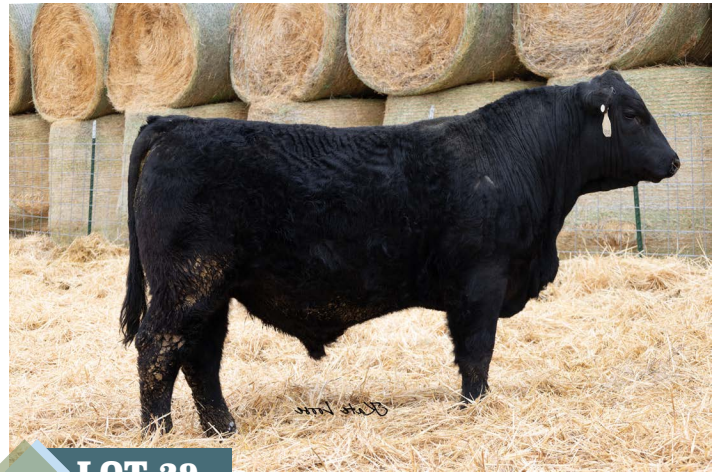
GAR-EGL PROTEGE#
 QHF BLACKCAP 6E2 OF4V16 4355
 LOST LAKE VANGUARD 1504
 EXPLORING BESS X127 LLR
 KG WISDOM 9402
 LEAD ON WENDY 1286 DRF
 S A F DIRECTIVE#
 MISS DESIGN 1135 LLR

Act. BW 94
 205 WT 777
 Yrfg ADJ 1207
 CALVING EASE ★★

CED	BW	WW	YW	Milk
8	2.2	61	108	41

Marb	RE	\$M	\$W	\$B	\$C	DAM PRODUCTION
0.36	0.78	64	69	127	229	5 WR 101. 3 YR 100

- Wild Fire K261 is one of the top gaining bulls in our sale offering.
- NR is 111 and YR is 105.
- Genomically, he is feed efficient ranking 19% for DMI. He ranks 18% for RE.
- His paternal grandsire is an ABS AI bull.
- His dam has a good production record.
- Beefy bull.



LOT 29

30

LOST LAKE FIRESTORM K263

DOB: 2/26/22 TAT: K263 REG: 20536343



QUAKER HILL FIRESTORM 3PT1
LOST LAKE HOT SHOT F76
 GUARDED BESS Z5 LLR

GAR-EGL PROTEGE#
 QHF BLACKCAP 6E2 OF4V16 4355
 LOST LAKE VANGUARD 1504
 EXPLORING BESS X127 LLR
 MYTTY IN FOCUS#
 A A R LADY KELTON 5551#
 KG WISDOM 9402
 STOLEN BLACKCAP W402 LLR

Act. BW 88
 205 WT 717
 Yrfg ADJ 1184
 CALVING EASE ★★

CED	BW	WW	YW	Milk
4	2.4	68	117	37

Marb	RE	\$M	\$W	\$B	\$C	DAM PRODUCTION
0.79	0.26	59	72	139	239	7 WR 105. 4 YR 104

- Firestorm K263 has a WR of 102 and a YR of 103.
- His Ten X dam has been a top producing cow.

31

LOST LAKE FIRE K319

DOB: 3/7/22 TAT: K319 REG: 20516530



QUAKER HILL FIRESTORM 3PT1
LOST LAKE HOT SHOT F76
 GUARDED BESS Z5 LLR

GAR-EGL PROTEGE#
 QHF BLACKCAP 6E2 OF4V16 4355
 LOST LAKE VANGUARD 1504
 EXPLORING BESS X127 LLR
 MOGCK SURE SHOT#
 KG RITO DUCHESS 7338
 BHC PAYWEIGHT 654
 DAKOTA BLACKBIRD 1471 LLR

Act. BW 81
 205 WT 667
 Yrfg ADJ 1147
 CALVING EASE ★★★

CED	BW	WW	YW	Milk
6	0.5	66	116	26

Marb	RE	\$M	\$W	\$B	\$C	DAM PRODUCTION
0.04	0.74	47	64	126	210	4 WR 99. 2 YR 100

- Fire K319 has an interesting mixture of traits.
- He has heifer bull credentials.
- Genomically, he ranks in the top 24% for WW, top 20% for YW and top 7% for CWT.

32 LOST LAKE NEXT GEN K281

DOB: 3/1/22 TAT: K281 REG: 20536350



V A R GENERATION 2100#
8N GENERATION 667
 8N ENCHANTRESS 119

APEX VANGUARD 136
SECURE EVERELDA Z213 LLR
 JUST EVERELDA 275 LLR

CONNELY CONSENSUS 7229#
 SANDPOINT BLACKBIRD 8809
 HOOVER DAM#
 BASIN ENCHANTRESS R256
 LOST LAKE VANGUARD 1504
 APEXETTE BELL 4019
 LOST LAKE JUSTICE 3163
 FOCUS ON MINNIE 1403 LLR

Act. BW 81
 205 WT 726
 Yrfg ADJ 1193
 CALVING EASE ★★★

CED	BW	WW	YW	Milk
2	1.4	64	122	29

Marb	RE	\$M	\$W	\$B	\$C	DAM PRODUCTION
0.54	0.57	47	61	148	239	8 WR 96.5 YR 104

- Next Gen K281 is a heifer bull with a NR of 104 and a YR of 103.
- He has proven that after starting with a low BW, he can grow quite well.
- Deep bodied bull.

33 LOST LAKE GENESIS K237

DOB: 2/23/22 TAT: K237 REG: 20516518



V A R GENERATION 2100#
8N GENERATION 667
 8N ENCHANTRESS 119

M V C C NEBRASKA-1409
MID WEST ERICA A167 LLR#
 NEW ERICA 1326 LLR

CONNELY CONSENSUS 7229#
 SANDPOINT BLACKBIRD 8809
 HOOVER DAM#
 BASIN ENCHANTRESS R256
 MEADOW ACRES NEBRASKA 70
 MVCC RITO DUTCHESS 054-1176
 B/R NEW FRONTIER 095#
 CONCLUSIVE ERICA 1952 LLR

Act. BW 74
 205 WT 696
 Yrfg ADJ 1134
 CALVING EASE ★★★

CED	BW	WW	YW	Milk
13	-1.7	53	96	32

Marb	RE	\$M	\$W	\$B	\$C	DAM PRODUCTION
0.73	0.47	69	62	117	221	8 WR 109.6 YR 108

- Genesis K237 carries heifer bull credentials.
- Genomically he ranks in top 3% for BW and top 5% for CED.
- His dam has a wonderful progeny production record and is a Pathfinder cow herself.
- Packs the pounds on while maintaining the correct design to be a heifer bull.

34 LOST LAKE HORIZON K368

DOB: 3/19/22 TAT: K368 REG: 20516535



V A R GENERATION 2100#
8N GENERATION 667
 8N ENCHANTRESS 119

MF CC&7 72
PRIDE OF THE PUB A60 LLR
 PROUD LIBATION Y74 LLR

CONNELY CONSENSUS 7229#
 SANDPOINT BLACKBIRD 8809
 HOOVER DAM#
 BASIN ENCHANTRESS R256
 SYDGEN C C & 7#
 MF BIG BLACK 512#
 SYDGEN C C & 7#
 LEADERS PRIDE T154 LLR

Act. BW 84
 205 WT 757
 Yrfg ADJ 1162
 CALVING EASE ★★

CED	BW	WW	YW	Milk
8	1.3	74	131	30

Marb	RE	\$M	\$W	\$B	\$C	DAM PRODUCTION
0.26	0.48	66	72	133	239	8 WR 105.5 YR 104

- Horizon K368 has a WR of 108 and a 205 Day Weight of 757 lbs.
- Genomically, he ranks in the top 25% for WW and top 12% for YW. Also, in the top 7% for SC and top 18% for Docility.
- His dam is a top producing cow, who is a double bred C C & 7.

35 LOST LAKE TORCH K346

DOB: 3/13/22 TAT: K346 REG: 20518487



V A R GENERATION 2100#
8N GENERATION 667
 8N ENCHANTRESS 119

SYDGEN TRUST 3008
TRUSTED PRIDE C333 B&D
 WISE PRIDE Z299 B & D

CONNELY CONSENSUS 7229#
 SANDPOINT BLACKBIRD 8809
 HOOVER DAM#
 BASIN ENCHANTRESS R256
 SYDGEN TRUST 6228#
 SYDGEN ROYAL QUEEN 4286
 KG WISDOM 9402
 STOLEN PRIDE W384 B&D

Act. BW 81
 205 WT 700
 Yrfg ADJ 1116
 CALVING EASE ★★★

CED	BW	WW	YW	Milk
1	1.6	72	123	30

Marb	RE	\$M	\$W	\$B	\$C	DAM PRODUCTION
0.5	0.68	66	73	145	254	6 WR 105.3 YR 101

- Torch K346 is also a heifer bull, out of a high producing dam.

36 WINDY RIDGE FAST FORWARD 226

DOB: 2/3/22 TAT: 226 REG: 20454849



BASIN PAYWEIGHT 1682#
JR FAST FORWARD
 JNSR MS QUEEN 453B

PA POWER TOOL 9108#
WINDY RIDGE SUNFLOWER 513
 WINDY RIDGE SUNFLOWER 912

BASIN PAYWEIGHT 006S#
 21AR O LASS 7017
 MOGCK SURE SHOT#
 JNSR QUEEN 254Z
 G A R PREDESTINED#
 SHAMROCKS BEEBEE QUEEN 3095
 S H FAME 1378
 WINDY RIDGE SUNFLOWER 512

Act. BW 80
 205 WT 695
 Yrfg ADJ 1191
 CALVING EASE ★★★

CED	BW	WW	YW	Milk
11	-0.9	72	121	35

Marb	RE	\$M	\$W	\$B	\$C	DAM PRODUCTION
1.06	0.64	74	83	156	276	6 WR 100.5 YR 100

- Fast Forward 226 has calving ease and a high marbling score.

CALVING EASE CODES:
 Star ratings are a subjective estimate of a bull's calving ease.

- ★ Cows
- ★★ Larger Framed Heifers & Cows
- ★★★ All Heifers & Cows

37**WINDY RIDGE FAST FORWARD 218**

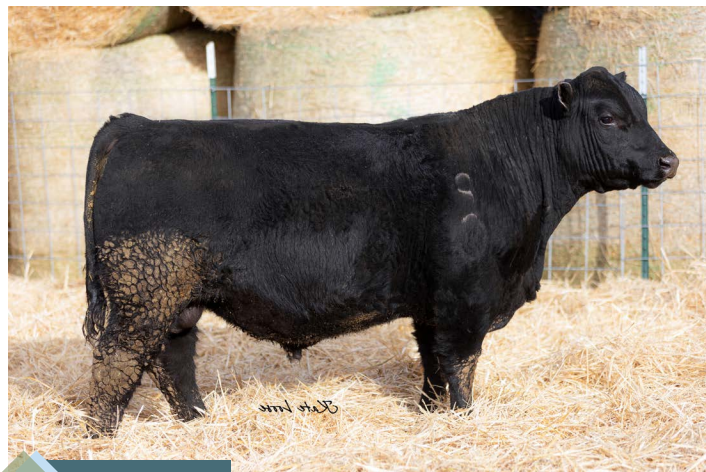
DOB: 1/31/22 TAT: 218 REG: 20454842

ANGUS GS
Powered by NEAGUY**BASIN PAYWEIGHT 1682#**
JR FAST FORWARD
JNSR MS QUEEN 453BBASIN PAYWEIGHT 006S#
21AR O LASS 7017
MOGCK SURE SHOT#
JNSR QUEEN 254Z
CONNEALY CONSENSUS 7229#
DEPPE 307R MISTRESS 125
WINDY RIDGE AUTHORITY 129
WINDY RIDGE SUNFLOWER 912**DEPPE 125 CONSENSUS 313**
WINDY RIDGE SUNFLOWER 517
WINDY RIDGE SUNFLOWER 304Act. BW 80
205 WT 690
Yrig ADJ 1124
CALVING EASE ★★★

CED	BW	WW	YW	Milk
11	0.2	75	121	28

Marb	RE	\$M	\$W	\$B	\$C	DAM PRODUCTION
0.98	0.72	87	82	156	289	6 WR 98. 5 YR 98

- Fast Forward 218 is a muscular bull.
- He is easy calving, with feed efficiency, and great carcass statistics.

**LOT 37****38****LOST LAKE IRON WORKER K99**

DOB: 2/2/22 TAT: K99 REG: 20516552

ANGUS GS
Powered by NEAGUY**CONNEALY BLACK GRANITE#**
MARDA BLACKSMITH 683
S A V BLACKCAP MAY 3092CONNEALY CONSENSUS 7229#
EUPA ELGA OF CONANGA 9109#
A A R TEN X 7008 S A#
S A V BLACKCAP MAY 1443
A A R TEN X 7008 S A#
V N A R KEM 8047
R44 GAME DAY 1956
MATH QUIZ JOAN Y31 LLR**V N A R TEN X 3304**
TOP TEN JOAN F154 LLR
SPORTY JOAN B241 LLRAct. BW 95
205 WT 793
Yrig ADJ 1156
CALVING EASE ★★

CED	BW	WW	YW	Milk
5	1.8	74	124	28

Marb	RE	\$M	\$W	\$B	\$C	DAM PRODUCTION
0.53	0.69	89	74	125	251	1 WR 113. 1 YR 100

- Iron Worker K99 has a NR of 113 and a YR of 100.
- His sire was the top seller at the 2017 National Western Angus Bull Sale, now he is part of the ORigen AI line-up.

**LOT 38****39****LOST LAKE BLACK EYE K96**

DOB: 2/2/22 TAT: K96 REG: 20516551

ANGUS GS
Powered by NEAGUY**JINDRA BLACKOUT**
LOST LAKE ECLIPSE H4
POWER SOCKET JUANADA LLRJINDRA ACCLAIM#
JINDRA JUDY J 1314 3150
KREIN PT SOCKET 534
HEARTLAND JUANADA A112 LLR
S A V RESOURCE 1441#
DIAMOND BELLE NELLIE 702Y
M V C C NEBRASKA-1409
IMPROVED ELENOR U371 LLR**HARB RESOURCE 217**
RESOURCE'S ELENOR G280 LLR
NEBRASKA ELENOR A331 LLRAct. BW 78
205 WT 707
Yrig ADJ 1241
CALVING EASE ★★★

CED	BW	WW	YW	Milk
11	0.5	63	121	33

Marb	RE	\$M	\$W	\$B	\$C	DAM PRODUCTION
0.41	0.92	56	63	139	236	2 WR 99. 2 YR 102

- Black Eye K96 has the highest WDA of all the Eclipse H4 sons.
- His NR is 101 and YR is 108.
- He is a heifer bull yet has balanced EPDs.
- His genomics have several strengths but especially note that he ranks in the top 1% for Docility.

**LOT 39**

40 LOST LAKE NORTH WIND K32

DOB: 1/19/22 TAT: K32 REG: 20598293

ANGUS GS
Proudly by NICKBY



K C F BENNETT SOUTHSIDE#
BAKERS NORTHSIDE 6007
BAKERS ERICAMERE 3128

NICHOLS EXTRA K205#
K C F MISS 208 S11#
HOOVER DAM#
BAKERS ERICAMERE 1091
CONNEALY CONSENSUS 7229#
EURA ELGA OF CONANGA 9109#
FOUR ACE GRIDIRON 801
PICTURE JUANADA U9 LLR

Act. BW 78
205 WT 708
Yrig ADJ 1225
CALVING EASE ★★★

CONNEALY BLACK GRANITE#
HARD ROCK JUANADA H76 LLR
JUANADA OF THE GRID Z118 LLR

CED	BW	WW	YW	Milk
12	0.7	83	148	29

Marb	RE	\$M	\$W	\$B	\$C	DAM PRODUCTION
0.81	0.63	65	81	176	293	1 WR 105. 1 YR 106

- North Wind K32 has a NR of 105 and a YR of 106.
- His sire is an ORigen bull from Baker Angus.
- He has a nice EPD matrix.
- Genomically, he is strongly maternal, ranking in the top 1% for CEM and for BW as well as top 10% for
- CEM. He also ranks in the top 23% for WW and top 22% for YW plus in the top 3% for SC and top 7% for Docility.
- 7 Pathfinders in the pedigree.
- Dam is a first calf heifer.

41 LOST LAKE BLACKEN K169

DOB: 2/12/22 TAT: K169 REG: 20516509

ANGUS GS
Proudly by NICKBY



JINDRA BLACKOUT
LOST LAKE ECLIPSE H4
POWER SOCKET JUANADA LLR

JINDRA ACCLAIM#
JINDRA JUDY J 1314 3150
KREIN PT SOCKET 534
HEARTLAND JUANADA A112 LLR
CONNEALY CONFIDENCE 0100#
MF BLACKBIRD 51
LOST LAKE PIRATE Y1
EBONY BY DESIGN 455 LLR

MARDA SWAGGER 463
SWAGGER'S BLACKBIRD G126 LLR
PIRATES BLACK PATCH C203 LLR

Act. BW 75
205 WT 720
Yrig ADJ 1210
CALVING EASE ★★★

CED	BW	WW	YW	Milk
9	0.7	73	127	34

Marb	RE	\$M	\$W	\$B	\$C	DAM PRODUCTION
0.66	0.63	67	78	129	234	2 WR 105. 1 YR 105

- Blacken K169 has a WR of 103 and a YR of 105.
- He is a true heifer bull: genomically ranking in the top 5% for BW, top 3% for CED, and top 17% for CEM.
- He has a strong pedigree with early dam production looking good.

42 LOST LAKE BLACK CLOUD K305

DOB: 3/4/22 TAT: K305 REG: 20516527

ANGUS GS
Proudly by NICKBY



JINDRA BLACKOUT
LOST LAKE ECLIPSE H4
POWER SOCKET JUANADA LLR

JINDRA ACCLAIM#
JINDRA JUDY J 1314 3150
KREIN PT SOCKET 534
HEARTLAND JUANADA A112 LLR
SYDGEN TRUST 6228#
SYDGEN HEROINE 9808
CHERRY CRK DISCOVERY C22
UPHILL MAGNOLIA C41 LLR#

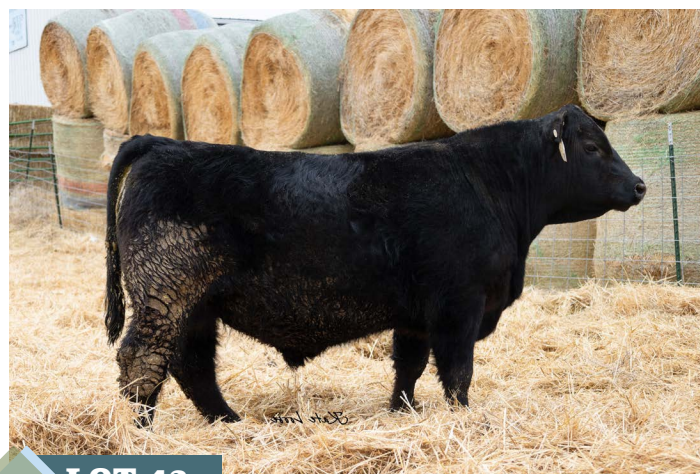
Act. BW 80
205 WT 702
Yrig ADJ 1155
CALVING EASE ★★★

SYDGEN FATE 2800#
DESTINY'S MAGNOLIA G8 LLR
MAGNOLIA E21 LLR

CED	BW	WW	YW	Milk
7	1.4	79	147	29

Marb	RE	\$M	\$W	\$B	\$C	DAM PRODUCTION
0.74	0.82	68	72	182	304	2 WR 101. 2 YR 101

- Black Cloud K305 is a heifer bull that ratioed 100 for both weaning and yearling.
- He has lovely EPD matrix throughout all categories.
- Genomically, he ranks 24% for WW, 3% YR and 5% for SC.
- Dam has a nice production record; her sire the maternal icon SydGen Fate 2800.



LOT 42

43 LOST LAKE LOTTO K97

DOB: 2/2/22 TAT: K97 REG: 20524786

ANGUS GS
Proudly by NICKBY



E W A PEYTON 642
ROSEDA POWERBALL23 F091
ROSEDA BLACKCAP B103 D118

QUAKER HILL MANNING 4EX9
E W A 444 OF 968 PROGRESS#
V A R DISCOVERY 2240#
ROSEDA BLACKCAP 0134 B103
SYDGEN TRUST 6228#
SYDGEN ROYAL QUEEN 4286
KG SURE SHOT 0266
MINNIE LOCK 3036 LLR

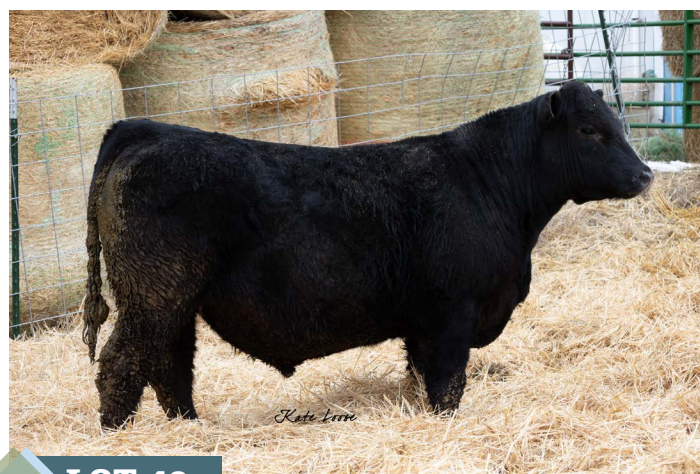
Act. BW 81
205 WT 652
Yrig ADJ 1164
CALVING EASE ★★★

SYDGEN TRUST 3008
MINNIE OF TRUST F3 LLR
AIM HIGH MINNIE D164 LLR

CED	BW	WW	YW	Milk
11	-0.1	74	131	20

Marb	RE	\$M	\$W	\$B	\$C	DAM PRODUCTION
1.13	1.18	47	65	189	292	3 WR 96. 1 YR 100

- Lotto K97 is a heifer bull.
- His EPDs express growth and especially tremendous carcass power.
- Genomically, he ranks in the top 3% for both Marb and RE.
- His famous sire has produced at least 23 sons selling for between \$10,000 and \$200,000.



LOT 43

44

LOST LAKE JAYHAWK K56

DOB: 1/27/22 TAT: K56 REG: 20520970

G A R ASHLAND
G A R KANSAS
 CHAIR ROCK MOMENTUM 6057
 KPHU 4007
ALL THAT RITZ E121 B & D
 WISE PRIDE Z299 B & D

G A R EARLY BIRD
 CHAIR ROCK AMBUSH 1018
 G A R MOMENTUM
 CHAIR ROCK SURE FIRE 4060
 CONNEALY UPTOWN 098E#
 KPHU 1004
 KG WISDOM 9402
 STOLEN PRIDE W384 B&D

ANGUS GS
 Powered by NEOGEN



Act. BW 81
 205 WT 637
 YrIg ADJ 1229
 CALVING EASE ★★★

CED	BW	WW	YW	Milk
10	0.6	64	122	31

Marb	RE	\$M	\$W	\$B	\$C	DAM PRODUCTION
1.01	0.88	65	65	160	273	3 WR 96. 2 YR 105

- Jayhawk K56 has a YR of 106.
- He has an excellent EPD matrix.
- He is a heifer bull.
- Genomically, he ranks in the top 22% for Marb and the top 23% for RE.
- Famous sires in his pedigree.

45

LOST LAKE HEARTLAND K12

DOB: 1/15/22 TAT: K12 REG: 20516505

G A R ASHLAND
G A R KANSAS
 CHAIR ROCK MOMENTUM 6057
 DEPPE 125 CONSENSUS 313
CONSENSUS LASS H77 LLR
 HIGH SEAS LASS D198 LLR

G A R EARLY BIRD
 CHAIR ROCK AMBUSH 1018
 G A R MOMENTUM
 CHAIR ROCK SURE FIRE 4060
 CONNEALY CONSENSUS 7229#
 DEPPE 307R MISTRESS 125
 LOST LAKE PIRATE Y1
 CRUISIN LASS Y130 LLR

ANGUS GS
 Powered by NEOGEN



Act. BW 77
 205 WT 655
 YrIg ADJ 1082
 CALVING EASE ★★★

CED	BW	WW	YW	Milk
14	0.4	68	118	36

Marb	RE	\$M	\$W	\$B	\$C	DAM PRODUCTION
1.08	0.95	82	76	162	292	1 WR 97. 1 YR 96

- Heartland K12 has a wonderful EPD matrix, especially for fertility, maternal, growth, and carcass.
- Genomically, he ranks in the top 11% of the breed for RE and top 17% for Marb.
- Dam is a first calf heifer.
- He impresses you with his overall ribshape and amount of muscle.

46

WINDY RIDGE HOBSON 223

DOB: 2/2/22 TAT: 223 REG: 20487257

DL SONIC 444#
CAR HOBSON
 DIAMOND PERFECTION 481E#
 DEPPE 125 CONSENSUS 313
WINDY RIDGE CLEO 514
 WINDY RIDGE CLEO 004

KG SOLUTION 0018#
 DL BARBARA 792
 STILL IN THE ROUGH 201
 DIAMOND PERFECTION 0224
 CONNEALY CONSENSUS 7229#
 DEPPE 307R MISTRESS 125
 BTR PAYWEIGHT 630
 WR MAID IN THE FINALS 107

ANGUS GS
 Powered by NEOGEN



Act. BW 88
 205 WT 657
 YrIg ADJ 1249
 CALVING EASE ★★

CED	BW	WW	YW	Milk
11	1.1	84	140	24

Marb	RE	\$M	\$W	\$B	\$C	DAM PRODUCTION
1.1	0.13	72	76	156	274	6 WR 98. 6 YR 100

- Hobson 223 has a WW EPD of 83, a Marb EPD of 1.10, and great foot EPDs.



LOT 46

47

WINDY RIDGE HOBSON 204

DOB: 1/15/22 TAT: 204 REG: 20454867

DL SONIC 444#
CAR HOBSON
 DIAMOND PERFECTION 481E#
 CURTIN 1682 PAYWEIGHT 7032
WINDY RIDGE SWEET PEA 011
 WINDY RIDGE SWEET PEA 610

KG SOLUTION 0018#
 DL BARBARA 792
 STILL IN THE ROUGH 201
 DIAMOND PERFECTION 0224
 BASIN PAYWEIGHT 1682#
 CURTIN ERICA 3104#
 R B TOUR OF DUTY 177#
 WINDY RIDGE LADY MANDATE 114

ANGUS GS
 Powered by NEOGEN



Act. BW 72
 205 WT 734
 YrIg ADJ 1212
 CALVING EASE ★★★

CED	BW	WW	YW	Milk
15	-1.1	81	136	29

Marb	RE	\$M	\$W	\$B	\$C	DAM PRODUCTION
0.55	0.39	75	81	139	255	1 WR 101. 1 YR 98

- Hobson 204 has great calving ease, a high weaning weight, and very good foot EPDs.
- Dam is a first calf heifer.
- This bull dispays incredible length of body.

48

LOST LAKE HOBSON K11

DOB: 1/15/22 TAT: K11 REG: 20516504

DL SONIC 444#
CAR HOBSON
 DIAMOND PERFECTION 481E#
 GV UPROAR 802
UPWARD MAGNOLIA H282 LLR
 MAGNOLIA E21 LLR

KG SOLUTION 0018#
 DL BARBARA 792
 STILL IN THE ROUGH 201
 DIAMOND PERFECTION 0224
 BRUIN UPROAR 0070#
 NELSON MISS KAYE 7093#
 CHERRY CRK DISCOVERY C22
 UPHILL MAGNOLIA C41 LLR#

ANGUS GS
 Powered by NEOGEN



Act. BW 87
 205 WT 1078
 YrIg ADJ 1078
 CALVING EASE ★★

CED	BW	WW	YW	Milk
5	1.6	98	179	20

Marb	RE	\$M	\$W	\$B	\$C	DAM PRODUCTION
1.06	0.89	63	78	215	342	1 YR 98

- Hobson K11 has a great EPD matrix.
- Genomically, he ranks in the top 1% of the breed for WW and YW; his calves are apt to be gentle giants as he also ranks in the top 1% for Docility. He is a carcass bull ranking in the top 1% of the breed for CWT, top 6% for RE and top 12% for Marb.
- Dam is a first calf heifer.
- A big-ribbed bull that is powerful in his design.

49 LOST LAKE AUDIBLE K42

DOB: 1/21/22 TAT: K42 REG: 20516539



DL SONIC 444#
CAR HOBSON
 DIAMOND PERFECTION 481E#
 KREIN PT SOCKET 534
CALIPER MINNIE H128 LLR
 SHY MINNIE B131 LLR

KG SOLUTION 0018#
 DL BARBARA 792
 STILL IN THE ROUGH 201
 DIAMOND PERFECTION 0224
 PA POWER TOOL 9108#
 RIVER HILLS ROSA X374
 V A R RESERVE 1111#
 MINNIE LOCK 3036 LLR

Act. BW 79
 205 WT 721
 Yrlg ADJ 1155
 CALVING EASE ★★

CED	BW	WW	YW	Milk
14	-1.1	62	107	29

Marb	RE	\$M	\$W	\$B	\$C	DAM PRODUCTION
0.62	0.69	60	66	137	238	1 WR 106. 1 YR 101

- Audible K42 has a NR of 106 and a YR of 101.
- He has a good EPD matrix, especially including his carcass EPDs.
- Dam is a first calf heifer.
- Soggy bull.

50 WINDY RIDGE BRONC 205

DOB: 1/16/22 TAT: 205 REG: 20454819



BALDRIDGE BRONC#
2XL BRONC 8153
 2XL CLOVA PRIDE 6230

EF COMMANDO 1366#
 BALDRIDGE ISABEL Y69
 K C F BENNETT SOUTHSIDE#
 BLACKSTONE PRIDE 3003
 3F EPIC 4631#
 A J R QUEEN HELEN 2204
 WINDY RIDGE INSPIRATION 923
 WINDY RIDGE TWILIGHT 841



Act. BW 78
 205 WT 762
 Yrlg ADJ 1252
 CALVING EASE ★★

CED	BW	WW	YW	Milk
6	0.2	87	144	34

Marb	RE	\$M	\$W	\$B	\$C	DAM PRODUCTION
0.99	0.51	74	92	155	275	1 WR 105. 1 YR 101

- Bronc 205 had a 205 day weight of 762 lbs.
- Great calving ease.
- Dam is a first calf heifer.
- Grand dam is a Pathfinder cow.
- This bull is impressive in his shoulder design. A "sleep all night" bull.

51 2XL BRONC 8153 JKS K14

DOB: 1/15/22 TAT: K14 REG: 20586002



BALDRIDGE BRONC#
2XL BRONC 8153
 2XL CLOVA PRIDE 6230
 SYDGEN ENHANCE
W R BEMINDFUL MAID 002
 W R BEMINDFUL MAID 804

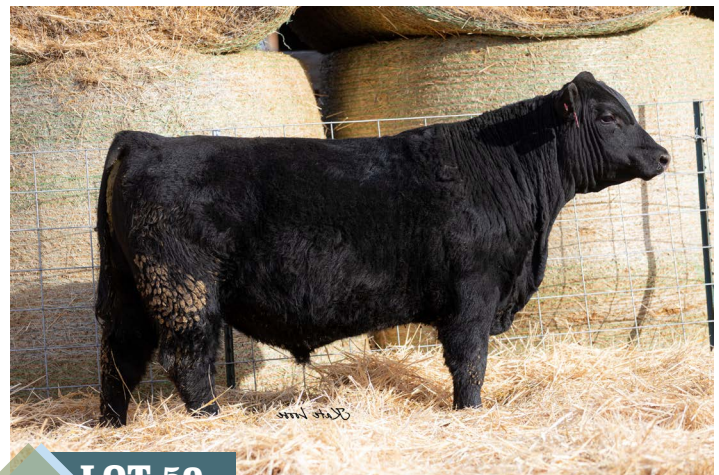
EF COMMANDO 1366#
 BALDRIDGE ISABEL Y69
 K C F BENNETT SOUTHSIDE#
 BLACKSTONE PRIDE 3003
 SYDGEN EXCEED 3223#
 SYDGEN RITA 2618
 DL SONIC 444#
 W R BEMINDFUL MAID 225

Act. BW 78
 205 WT 1113
 Yrlg ADJ 1113
 CALVING EASE ★★

CED	BW	WW	YW	Milk
13	-1.7	70	125	30

Marb	RE	\$M	\$W	\$B	\$C	DAM PRODUCTION
		84	68			1 YR 102

- Bronc K14 not only qualifies as a heifer bull but he inherited those credentials.
- Genomically, he ranks in the top 5% for BW, top 12% for CED and top 5% for CEM.
- He also inherited fertility being in the top 10% for SC and top 5% for HP.
- WW in the top 18% genomically as well.
- Sire is a top AI bull at ORigen.
- Dam is a first calf heifer.
- Watch this bull move, he is powerfully designed.



LOT 50

52 LOST LAKE TRAIL BOSS K69

DOB: 1/30/22 TAT: K69 REG: 20516544



POSS MAVERICK
POSS RAWHIDE
 POSS BLUEBLOOD 6502
 8N GENERATION 667
NANAS GENERATION F45 LLR
 POT SHOT NANA D127 LLR

BASIN PAYWEIGHT 1682#
 POSS PRIDE 5163
 POSS EASY IMPACT 0119
 POSS BLUEBLOOD 920
 V A R GENERATION 2100#
 8N ENCHANTRESS 119
 CAN AM UPSHOT 311
 NANA BOTTOM LINE A149 LLR

Act. BW 81
 205 WT 674
 Yrlg ADJ 1164
 CALVING EASE ★★

CED	BW	WW	YW	Milk
11	0.5	87	143	29

Marb	RE	\$M	\$W	\$B	\$C	DAM PRODUCTION
0.78	0.66	91	90	167	308	3 WR 97. 2 YR 96

- Trail Boss K69 has a great matrix of EPDs.
- Genomically, he spells fertility, ranking in the top 8% for SC and top 6% for HP; yet also spells growth, ranking in the top 6% for WW and in the top 25% for YW.



Grant assessing a calf in the chute

53**LOST LAKE CLINT K72**

DOB: 1/30/22 TAT: K72 REG: 20516546

**POSS MAVERICK**
POSS RAWHIDE
POSS BLUEBLOOD 6502**LOST LAKE BREAKING NEWS**
NEWSWOMAN X40 LLR
LOCKET LASS T446 LLRBASIN PAYWEIGHT 1682#
POSS PRIDE 5163
POSS EASY IMPACT 0119
POSS BLUEBLOOD 920
LEMMON NEWSLINE C804#
ALLIANCES MAID LLR 599#
WAR ALLIANCE 9126 6006#
K A EILEENMERE LASS K814#Act. BW 68
205 WT 721
Yrig ADJ 1204
CALVING EASE ★★★

CED	BW	WW	YW	Milk
8	0.5	68	113	30

Marb	RE	\$M	\$W	\$B	\$C	DAM PRODUCTION
0.63	0.56	59	71	138	238	10 WR 108. 7 YR 105

- Clint K72 has a NR of 103 and a YR of 102.
- His sire is a nationally known AI sire.
- His dam is a top producing cow ... for many years.
- Growthy bull that you have to appreciate.

54**LOST LAKE RIDER K92**

DOB: 2/2/22 TAT: K92 REG: 20516550

**POSS MAVERICK**
POSS RAWHIDE
POSS BLUEBLOOD 6502**FOUR ACE GRIDIRON 801**
JUANADA OF THE GRID Z118 LLR
PICTURE JUANADA U9 LLRBASIN PAYWEIGHT 1682#
POSS PRIDE 5163
POSS EASY IMPACT 0119
POSS BLUEBLOOD 920
TC GRIDIRON 258#
FOUR ACE HEATHER LASS 302#
ISU IMAGING Q 9111#
FREE JUANADA 716 LLRAct. BW 93
205 WT 671
Yrig ADJ 1138
CALVING EASE ★

CED	BW	WW	YW	Milk
4	3.5	73	131	31

Marb	RE	\$M	\$W	\$B	\$C	DAM PRODUCTION
0.81	0.91	59	64	176	287	9 WR 107. 8 YR 106

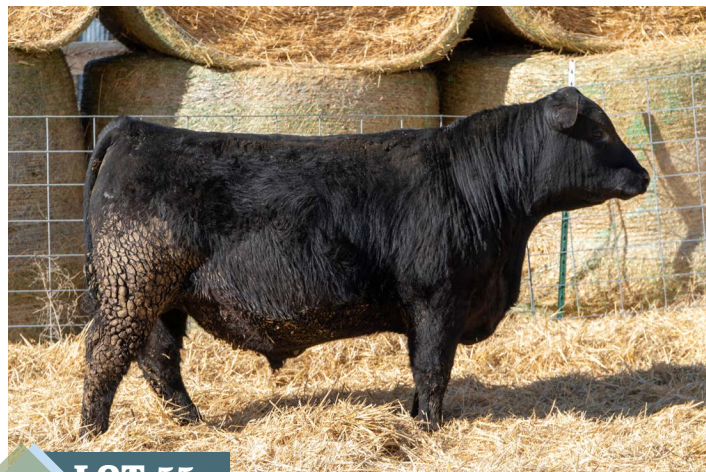
- Rider K92 is truly a performance bull.
- Reflected in his EPDs.
- Genomically, he ranks in the top 14% or better in, YW, SC, Doc, CWT and RE.
- His dam is a top producer.

**LOT 53**

55**LOST LAKE CHISHOLM K3**

DOB: 1/12/22 TAT: K3 REG: 20516526

ANGUS GS

**POSS MAVERICK**
POSS RAWHIDE
POSS BLUEBLOOD 6502BASIN PAYWEIGHT 1682#
POSS PRIDE 5163
POSS EASY IMPACT 0119
POSS BLUEBLOOD 920
K C F BENNETT ABSOLUTE#
WULFS HARTLEY ELINE 5917C
ALC STEAL S27S
EAST BORDER LASS 521 LLR**WULFS ABSOLUTE A517E**
ABSOLUTE LASS H118 LLR
LASS OF CRIME Z354 LLRAct. BW 78
205 WT 630
Yrlg ADJ 1171
CALVING EASE ★★**LOT 55**

CED	BW	WW	YW	Milk
11	-0.8	79	134	34

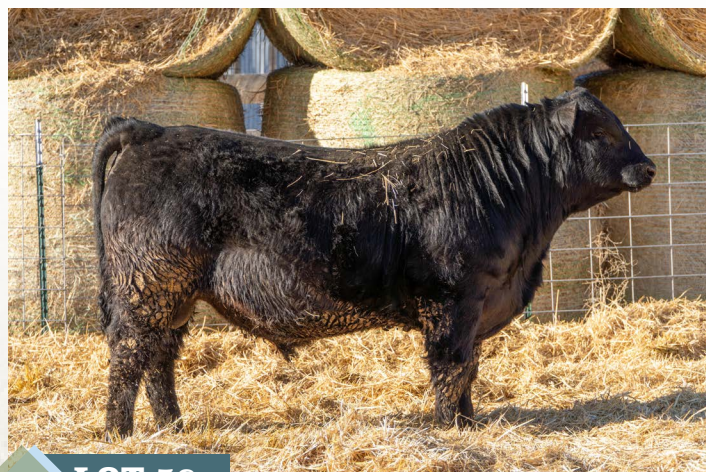
Marb	RE	\$M	\$W	\$B	\$C	DAM PRODUCTION
0.71	0.84	69	85	166	284	1 WR 93. 1 YR 100

- Chisholm K3 has a "No holes" EPD matrix.
- Genomically, he ranks in the top 12% for CEM, BW, and WW and top 18% for YW. Also in top 8% for Docility.
- Dam is a first calf heifer.
- Thick made bull, he is easy to find for quality.

56**LOST LAKE CHARCOAL K128**

DOB: 2/5/22 TAT: K128 REG: 20520839

ANGUS GS

**BAR R JET BLACK 5063**
WOIRHAYE JET SETTER 0755
M A R BLACKCAP EMPRESS 1755CONNELLY BLACK GRANITE#
BAR R IRIS ANITA 0113
PA FORTITUDE 2500#
SJH BLACKCAP EMPRESS B013
BYERGO BLACK MAGIC 3348
BYERGO MAY 2871
LOST LAKE PIRATE Y1
PROUD OF THE PLAY Y4 B&D**BYERGO/DOUBLE GG BLACKSTONE**
BLACK PRIDE G40 B & D
PRIDE OF THE SEAS A79 B & DAct. BW 79
205 WT 708
Yrlg ADJ 1158
CALVING EASE ★★**LOT 56**

CED	BW	WW	YW	Milk
13	-0.6	56	108	27

Marb	RE	\$M	\$W	\$B	\$C	DAM PRODUCTION
0.52	0.67	77	57	145	265	2 WR 105. 2 YR 105

- Charcoal K128 has both a WR and a YR of 101.
- Yet, he is a heifer bull. Genomically, he is in the top 7% of the breed for BW and top 3% for CED.
- He is also in the top 6% for Docility and top 11% for DMI (feed efficiency).
- His dam is on her way to be a top producer with 2 WR 105 and 2 YR 105.
- A bull that combines the best of the best, calving ease with high growth numbers.

57

LOST LAKE JET STREAM K388

DOB: 4/1/22 TAT: K388 REG: 20516536

ANGUS GS
Powered by NEGENIX



BAR R JET BLACK 5063
WOIRHAYE JET SETTER 0755
M A R BLACKCAP EMPRESS 1755

K C F BENNETT THEROCK A473#
ROCK SOLID BLACKBIRD G56 LLR
LEAD SHOT MONTANA C302 LLR

CONNELLY BLACK GRANITE#
BAR R IRIS ANITA 0113
PA FORTITUDE 2500#
S J H BLACKCAP EMPRESS B013
K C F BENNETT SOUTHSIDE#
K C F MISS PROTEGE W148
KG SURE SHOT 0266
SHINER MONTANA 3266 LLR

Act. BW 84
205 WT 723
Yrfg ADJ 1101
CALVING EASE ★

CED	BW	WW	YW	Milk
6	2.7	83	142	34

Marb	RE	\$M	\$W	\$B	\$C	DAM PRODUCTION
1.41	0.52	75	83	186	316	2 WR 106.1 YR 95

- Jet Stream K388 would be a strong candidate for first calf heifers.
- Genomically, he ranks in the top 3% for WW and top 15% for YW with a ranking of 18% for SC, 1% for Docility and 2% for Marb.
- Plenty of well-respected sires in his pedigree.

59

LOST LAKE GENETIC K314

DOB: 3/6/22 TAT: K314 REG: 20516529

ANGUS GS
Powered by NEGENIX



V A R GENERATION 2100#
8N GENERATION 667
8N ENCHANTRESS 119

KG SURE SHOT 0266
PROUD FOR SURE B136 LLR#
RIGHT PRIDE W349 LLR

CONNELLY CONSENSUS 7229#
SANDPOINT BLACKBIRD 8809
HOOVER DAM#
BASIN ENCHANTRESS R256
MOGCK SURE SHOT#
KG RITO DUCHESS 7338
O BAR X RIGHT TIME 702
PRIDE OF BULLSEYE 1104 LLR

Act. BW 85
205 WT 736
Yrfg ADJ 1102
CALVING EASE ★

CED	BW	WW	YW	Milk
0	3	74	132	29

Marb	RE	\$M	\$W	\$B	\$C	DAM PRODUCTION
0.6	0.74	52	65	152	249	7 WR 105.5 YR 105

- Genetic K314 is the cowboy kind. Genomically, he ranks in the top 5% for HP and ranks in the top 8% for WW and top 4% for YW.
- His dam is not only a top producing cow but a Pathfinder in her own right.
- Best way to describe him is thick throughout.

58

JET SETTER JKS K108

DOB: 2/3/22 TAT: K108 REG: 20584652

ANGUS GS
Powered by NEGENIX



BAR R JET BLACK 5063
WOIRHAYE JET SETTER 0755
M A R BLACKCAP EMPRESS 1755

MARDA DOUBLE VISION 665
VISIONS PRIDE G211 LLR
STRONG CONNECTION C308 LLR

CONNELLY BLACK GRANITE#
BAR R IRIS ANITA 0113
PA FORTITUDE 2500#
S J H BLACKCAP EMPRESS B013
JINDRA DOUBLE VISION#
MF PRIDE 40#
W A HARRY BEAR 112
PRIDE OF GRIDIRON Y5 B&D

Act. BW 78
205 WT 715
Yrfg ADJ 1101
CALVING EASE ★★★

CED	BW	WW	YW	Milk
9	-0.9	62	115	35

Marb	RE	\$M	\$W	\$B	\$C	DAM PRODUCTION
0.67	0.76	75	69	147	266	2 WR 104.2 YR 101

- Jet Setter K108 is another heifer bull with great maternal traits manifested in the EPDs.
- Genomically, he ranks in the top 2% of the breed for BW and top 5% for CED.
- Dam has a good production record.
- Just watch him walk towards you, you'll like him.



LOT 58



LOT 59

60

LOST LAKE SUCCESSION K348

DOB: 3/14/22 TAT: K348 REG: 20518488

ANGUS GS
Powered by NEGENIX



V A R GENERATION 2100#
8N GENERATION 667
8N ENCHANTRESS 119

KG SURE SHOT 0266
TARGET JULIET D106 B&D
CHARACTERS JULIET B&D T385

CONNELLY CONSENSUS 7229#
SANDPOINT BLACKBIRD 8809
HOOVER DAM#
BASIN ENCHANTRESS R256
MOGCK SURE SHOT#
KG RITO DUCHESS 7338
LOST LAKE CHARACTERISTIC 173
B&D JULIET 1542#

Act. BW 83
205 WT 763
Yrfg ADJ 1101
CALVING EASE ★★

CED	BW	WW	YW	Milk
0	2.4	78	122	19

Marb	RE	\$M	\$W	\$B	\$C	DAM PRODUCTION
-0.03	0.63	53	69	107	192	4 WR 104.3 YR 99

- Succession K348 has a NR of 109, with a 205 Day Weight of 763 lbs.
- Genomically, he ranks in the top 12% for WW and the top 16% for CWT.

61 LOST LAKE GENERATION K308

DOB: 3/5/22 TAT: K308 REG: 20516528

ANGUSGS
Powered by NEOGEN



V A R GENERATION 2100#
8N GENERATION 667
8N ENCHANTRESS 119

CONNELY CONSENSUS 7229#
SANDPOINT BLACKBIRD 8809
HOOVER DAM#
BASIN ENCHANTRESS R256
CONNELY UPTOWN 098E#
KPHU 1004
FOUR ACE GRIDIRON 801
HEROINE OF PRIVILEGE LLR

Act. BW 78
205 WT 631
Yrig ADJ 1129
CALVING EASE ★★★

KPHU 4007

UPTOWN HEROINE F244 LLR

IRON HEROINE Y256 LLR

CED	BW	WW	YW	Milk
2	2.2	78	131	27

Marb	RE	\$M	\$W	\$B	\$C	DAM PRODUCTION
0.67	0.86	58	73	153	256	3 WR 92. 2 YR 96

- Generation K308 is another heifer bull.
- His EPDs particularly emphasize carcass strength.
- Genomically, he is no Dud in growth ranking 22% in WW and 31% in YW.
- His design screams calving ease.

63 LOST LAKE OBSIDIAN K87

DOB: 2/1/22 TAT: K87 REG: 20522970

ANGUSGS
Powered by NEOGEN



CONNELY BLACK GRANITE#
BAR R JET BLACK 5063
BAR R IRIS ANITA 0113

CONNELY CONSENSUS 7229#
EURA ELGA OF CONANGA 9109#
SITZ UPWARD 307R#
BAR R ANITA 7081
JINDRA DOUBLE VISION#
MF PRIDE 40#
M V C C NEBRASKA-1409
BLACK MARKET ANN W198 LLR

Act. BW 88
205 WT 667
Yrig ADJ 1157
CALVING EASE ★★

MARDA DOUBLE VISION 665
BLACK REFLECTION F105 LLR
NEBRASKA BLACKCAP A184 LLR

CED	BW	WW	YW	Milk
9	0.7	59	112	28

Marb	RE	\$M	\$W	\$B	\$C	DAM PRODUCTION
0.87	0.32	54	57	148	246	3 WR 93. 2 YR 100

- Obsidian K87 has the highest WDA of his sire group.
- 6 Pathfinders in his pedigree.

65 LOST LAKE NEW MOON K46

DOB: 1/22/22 TAT: K46 REG: 20516540

ANGUSGS
Powered by NEOGEN



CONNELY BLACK GRANITE#
BAR R JET BLACK 5063
BAR R IRIS ANITA 0113

CONNELY CONSENSUS 7229#
EURA ELGA OF CONANGA 9109#
SITZ UPWARD 307R#
BAR R ANITA 7081
LD CAPITALIST 316#
MUSGRAVE PRIM LASSIE 163-386
KPHU 4007
BONITA CASH U290 LLR

Act. BW 87
205 WT 647
Yrig ADJ 1012
CALVING EASE ★★

MUSGRAVE 316 EXCLUSIVE
FREE MARKET BONITA H28 LLR
UPTOWN BONITA F161 LLR

CED	BW	WW	YW	Milk
8	1.9	71	109	28

Marb	RE	\$M	\$W	\$B	\$C	DAM PRODUCTION
0.57	0.65	89	75	132	260	1 WR 96. 1 YR 88

- New Moon K46 has balanced EPDs.
- Genomically, he ranks in the top 12% for both WW and HP.
- Dam is a first calf heifer.

62 LOST LAKE COAL K129

DOB: 2/5/22 TAT: K129 REG: 20516506

ANGUSGS
Powered by NEOGEN



BAR R JET BLACK 5063
FAST JET BLACK 828-011
FAST WILLIE 544-828

CONNELY BLACK GRANITE#
BAR R IRIS ANITA 0113
BALDRIDGE WILLIE Y34
FAST UPWARD 155-544
3F EPIC 4631#
A J R QUEEN HELEN 2204
CAN AM UPSHOT 311
JUANA PAY DAY Y123 LLR

Act. BW 80
205 WT 682
Yrig ADJ 1218
CALVING EASE ★★

CED	BW	WW	YW	Milk
7	2.8	79	134	27

Marb	RE	\$M	\$W	\$B	\$C	DAM PRODUCTION
0.84	0.49	66	73	148	258	1 WR 101. 1 YR 105

- Coal K129 has a WR of 101 and a YR of 105.
- Genomically, he ranks in the top 13% of the breed for WW and top 21% for Marb.
- His sire was purchased from Fastert Angus in Rock Rapids, IA.
- Dam is a first calf heifer.

64 LOST LAKE BLACK DIAMOND K50

DOB: 1/24/22 TAT: K50 REG: 20522916

ANGUSGS
Powered by NEOGEN



CONNELY BLACK GRANITE#
BAR R JET BLACK 5063
BAR R IRIS ANITA 0113

CONNELY CONSENSUS 7229#
EURA ELGA OF CONANGA 9109#
SITZ UPWARD 307R#
BAR R ANITA 7081
JINDRA DOUBLE VISION#
MF PRIDE 40#
MARDA SWAGGER 463
REBECCA TEDDY A182 LLR

Act. BW 75
205 WT 684
Yrig ADJ 1180
CALVING EASE ★★★

MARDA DOUBLE VISION 665
REBECCA 20-20 H158 LLR
SWAGGERS REBECCA D368 LLR

CED	BW	WW	YW	Milk
10	0.5	79	135	28

Marb	RE	\$M	\$W	\$B	\$C	DAM PRODUCTION
0.44	0.43	63	76	122	221	1 WR 101. 1 YR 102

- Black Diamond K50 is a heifer bull with a NR of 101 and a YR of 102.
- Genomically, he ranks in the top 11% for WW, top 9% for YW and the top 5% for Docility.
- Dam is a first calf heifer.
- This bull is looo...ng in his design.

66 LOST LAKE RENOVATE K196

DOB: 2/16/22 TAT: K196 REG: 20516512

ANGUSGS
Powered by NEOGEN



SYDGEN ENHANCE
BASIN ENHANCE 9338
BASIN LUCY 3150

SYDGEN EXCEED 3223#
SYDGEN RITA 2618
BASIN RAINMAKER P175#
BASIN LUCY 1667
S A V FINAL ANSWER 0035#
COLEMAN DONNA 714
JV ALLIANCE EJV 020
MINNIE GOLD MINE 2131 LLR

Act. BW 94
205 WT 758
Yrig ADJ 1115
CALVING EASE ★★

COLEMAN REGIS 904#
REGAL MINNIE Z65 LLR
MINNIE LOCK 3036 LLR

CED	BW	WW	YW	Milk
8	1.3	82	140	28

Marb	RE	\$M	\$W	\$B	\$C	DAM PRODUCTION
0.68	0.62	73	79	160	281	8 WR 104. 6 YR 104

- Renovate K196 has a WR 108.
- Genomically, he should have appeal for the commercial breeder ranking in the top 9% for BW, top 11% for WW and top 17% for YW. Also ranks in top 17% for HP.
- His grandsires are SydGen Enhance and Coleman Regis 904.
- His dam has longevity and top progeny performance.

67

LOST LAKE RENEW K235

DOB: 2/22/22 TAT: K235 REG: 20516517

ANGUS GS
Powered by NEXGEN

SYDGEN ENHANCE
BASIN ENHANCE 9338
BASIN LUCY 3150

FOUR ACE GRIDIRON 801
GRIDIRONS GERALDINE B207 LLR
GERALDINE MT 1616 LLR

SYDGEN EXCEED 3223#
SYDGEN RITA 2618
BASIN RAINMAKER P175#
BASIN LUCY 1667
TC GRIDIRON 258#
FOUR ACE HEATHER LASS 302#
HYLINE RIGHT TIME 338#
GERALDINE MT 97 L L R#

Act. BW 76
205 WT 673
Yrfg ADJ 1079
CALVING EASE ★★★



CED	BW	WW	YW	Milk
6	1	68	122	33

Marb	RE	\$M	\$W	\$B	\$C	DAM PRODUCTION
1.03	0.63	77	70	146	266	5 WR 99. 4 YR 100

- Renew K235 is a heifer bull.
- Genomically he ranks in the top 2% for heifer pregnancy He is no slouch on gain, genomically ranking 17% or WW and 27% for YW.
- 6 Pathfinders in the pedigree.
- Don't sleep on this bull, he is further down the list but impressive in his rib design.

68

LOST LAKE BEEF UP K337

DOB: 3/10/22 TAT: K337 REG: 20516531

ANGUS GS
Powered by NEXGEN

SYDGEN ENHANCE
BASIN ENHANCE 9606 BK
B & K ERICA 6219#

MARDA SWAGGER 463
SWAGGERS REBECCA D368 LLR
REBECCA TEDDY A182 LLR

SYDGEN EXCEED 3223#
SYDGEN RITA 2618
EXAR EZX 3772B#
B & K ERICA 2310
CONNELLY CONFIDENCE 0100#
MF BLACKBIRD 51
W A HARRY BEAR 112
REBECCA SPORT X94 LLR

Act. BW 83
205 WT 666
Yrfg ADJ 1037
CALVING EASE ★★



CED	BW	WW	YW	Milk
4	1.5	71	119	31

Marb	RE	\$M	\$W	\$B	\$C	DAM PRODUCTION
0.85	0.05	82	75	114	230	4 WR 100. 4 YR 103

- Beef Up K337 is a younger bull whose name reflects his genetic composition.
- Genomically, he ranks in the top 35% in Marb and in the top 1% for Meat tenderness.
- Out of a Swagger dam who has a good production record.

69

LOST LAKE ASTRONOMER K54

DOB: 1/26/22 TAT: K54 REG: 20516541

ANGUS GS
Powered by NEXGEN

JINDRA BLACKOUT
LOST LAKE ECLIPSE H4
POWER SOCKET JUANADA LLR

LOST LAKE PIRATE Y1
PIRATE'S BLACKCAP G77 LLR
UNIVERSITY BLACKCAP C330 LLR

JINDRA ACCLAIM#
JINDRA JUDY J 1314 3150
KREIN PT SOCKET 534
HEARTLAND JUANADA A112 LLR
CONNELLY SULLIVAN 83A#
LOST LAKE DOUBLE DATE W128#
LOST LAKE PROFESSOR Y411
GRIDIRONS BLACKCAP Y9 LLR

Act. BW 79
205 WT 688
Yrfg ADJ 1115
CALVING EASE ★★★



CED	BW	WW	YW	Milk
8	0.7	62	101	26

Marb	RE	\$M	\$W	\$B	\$C	DAM PRODUCTION
0.45	0.39	64	63	116	214	2 WR 96. 2 YR 97

- Astronomer K54 is also a heifer bull sporting a genomic ranking of 11% for CED and 6% for BW.
- His paternal grandsire is Jindra Blackout (an Alta Beef sire), is known for siring offspring with muscle on a moderate frame.
- Don't let the fact that he was born on a cold day affect your opinion of him.

70

LOST LAKE BLACK SUN K138

DOB: 2/6/22 TAT: K138 REG: 20516507

ANGUS GS
Powered by NEXGEN

JINDRA BLACKOUT
LOST LAKE ECLIPSE H4
POWER SOCKET JUANADA LLR

V N A R TEN X 3304
FOCUSED GERALDINE G347 LLR
GRIDIRONS GERALDINE B207 LLR

JINDRA ACCLAIM#
JINDRA JUDY J 1314 3150
KREIN PT SOCKET 534
HEARTLAND JUANADA A112 LLR
A A R TEN X 7008 S A#
V N A R KEM 8047
FOUR ACE GRIDIRON 801
GERALDINE MT 1616 LLR

Act. BW 70
205 WT 671
Yrfg ADJ 1116
CALVING EASE ★★★



CED	BW	WW	YW	Milk
13	-1.7	61	121	31

Marb	RE	\$M	\$W	\$B	\$C	DAM PRODUCTION
0.89	0.63	52	63	155	253	2 WR 91. 1 YR 97

- Black Sun K138 is a heifer bull with the triecta credentials of double digit EPDs for CED and CEM and a negative BW EPD.
- Yet, he genomically ranks in the top 5% of the breed for YW.

71

LOST LAKE PLANET K255

DOB: 2/25/22 TAT: K255 REG: 20516521

ANGUS GS
Powered by NEXGEN

JINDRA BLACKOUT
LOST LAKE ECLIPSE H4
POWER SOCKET JUANADA LLR

HILLTOP EDGE 3747
LASS ON THE EDGE H8 LLR
UPTOWN LASS F316 LLR

JINDRA ACCLAIM#
JINDRA JUDY J 1314 3150
KREIN PT SOCKET 534
HEARTLAND JUANADA A112 LLR
PRAIRIE PRIDE PREMIUM 407
HILLTOP CINDERELLA 39#
KPHU 4007
STOLEN LASS W301 LLR

Act. BW 71
205 WT 655
Yrfg ADJ 1089
CALVING EASE ★★★



CED	BW	WW	YW	Milk
10	-0.3	68	125	32

Marb	RE	\$M	\$W	\$B	\$C	DAM PRODUCTION
0.49	0.6	68	71	142	252	1 WR 97. 1 YR 96

- Planet K255 is a heifer bull with a nicely balanced matrix of EPDs.
- Genomically, he ranks in the top 25% for WW, top 13% for YW and top 2% for Docility.
- Dam is a first calf heifer.
- I called him stout from the beginning.

72

LOST LAKE GOLD MINE K53

DOB: 1/25/22 TAT: K53 REG: 20548116

ANGUS GS
Powered by NEXGEN

EZAR GOLD RUSH 6001
BASIN GOLD RUSH 9129
BASIN JOY 5305

V N A R TEN X 3304
TEN SPEED MAID G135 LLR
PACKING MAID C160 LLR

V A R DISCOVERY 2240#
V A R BLACKCAP 1059
BASIN ADVANCE 3134#
BASIN JOY 2015
A A R TEN X 7008 S A#
V N A R KEM 8047
WINDY RIDGE PACK IT ON 219
UPSTAIRS MAID W119 LLR

Act. BW 75
205 WT 646
Yrfg ADJ 1124
CALVING EASE ★★★



CED	BW	WW	YW	Milk
7	0	56	103	25

Marb	RE	\$M	\$W	\$B	\$C	DAM PRODUCTION
0.72	0.74	50	53	145	238	2 WR 93. 2 YR 97

- Gold Mine is a heifer bull.
- Genomically he ranks in the top 12% for BW and top 4% for CEM with a SC ranking of 3%.
- Thick bodied and smooth when on the move.

73 LOST LAKE HEAVY ORE K68

DOB: 1/29/22 TAT: K68 REG: 20516543

ANGUS GS
Powered by NECCOPI



EZAR GOLD RUSH 6001
BASIN GOLD RUSH 9129
BASIN JOY 5305

MARDA SWAGGER 463
EVENING PRIMROSE G370 LLR

KOCKOUT ROSE W50 LLR#

V A R DISCOVERY 2240#
V A R BLACKCAP 1059
BASIN ADVANCE 3134#
BASIN JOY 2015
CONNEALY CONFIDENCE 0100#
MF BLACKBIRD 51
WC KNOCKOUT 702T
TRADEMARK PRIMROSE T265 LLR

Act. BW 78
205 WT 697
Yrig ADJ 1079
CALVING EASE ★★★

CED	BW	WW	YW	Milk
13	-0.8	73	126	29

Marb	RE	\$M	\$W	\$B	\$C	DAM PRODUCTION
0.86	0.69	66	75	163	277	2 WR 99. 1 YR 94

- Heavy Ore K68 has well balanced EPDs.
- He is a heifer bull, bolstered genomically by ranking in the top 4% for CED and top 6% for BW.
- Dam is a Swagger daughter.
- Bold in his design.

74 LOST LAKE GALAXY K107

DOB: 2/3/22 TAT: K107 REG: 20536122

ANGUS GS
Powered by NECCOPI

K C F BENNETT ABSOLUTE#
CONNEALY LONE STAR
ELLEGRA OF CONANGA 527C#

SHIPWHEEL FOREFRONT 0567
BEST BESS B20 LLR
GUARDED BESS Z5 LLR

S A V FINAL ANSWER 0035#
THOMAS MISS LUCY 5152
PLATTEMERE WEIGH UP K360#
ELSHA OF CONANGA 138V
MYTTY FOREFRONT 77P
APEX ERISKAY 624
LOST LAKE VANGUARD 1504
EXPLORING BESS X127 LLR

Act. BW 89
205 WT 694
Yrig ADJ 1153
CALVING EASE ★

CED	BW	WW	YW	Milk
6	3.7	74	131	22

Marb	RE	\$M	\$W	\$B	\$C	DAM PRODUCTION
0.38	0.44	41	54	127	206	7 WR 98. 6 YR 99

- Galaxy K107 has the highest WDA of our Lone Star bulls.
- Genomically he ranks in the top 5% of the breed for WW and the top 7% for YW.
- This bull travels well, watch him move.

75 LOST LAKE SOLITAIRE K6

DOB: 1/13/22 TAT: K6 REG: 20516542

ANGUS GS
Powered by NECCOPI

K C F BENNETT ABSOLUTE#
CONNEALY LONE STAR
ELLEGRA OF CONANGA 527C#

GV UPROAR 802
FOREVER LADY H119 LLR

FOREVER LADY E300 LLR

S A V FINAL ANSWER 0035#
THOMAS MISS LUCY 5152
PLATTEMERE WEIGH UP K360#
ELSHA OF CONANGA 138V
BRUIN UPROAR 0070#
NELSON MISS KAYE 7093#
KG SURE SHOT 0266
FOREVER ALLIED 575 LLR

Act. BW 73
205 WT 691
Yrig ADJ 1157
CALVING EASE ★★

CED	BW	WW	YW	Milk
15	-2.6	61	99	31

Marb	RE	\$M	\$W	\$B	\$C	DAM PRODUCTION
0.69	0.66	78	72	120	234	1 WR 102. 1 YR 101

- Solitaire K6 has a NR of 102 and a YR of 101.
- Genomically, he has a nice mixture of traits. Ranking in the top 15% for CED, top 11% for BW, top 19% for WW and the top 6% for Docility.
- Dam is a first calf heifer.
- Prominent in his front end.



LOT 75

The LLR Management Team;
Echo & Jeff

76**LOST LAKE NORTH STAR K1**

DOB: 1/7/22 TAT: K1 REG: 20516966



K C F BENNETT ABSOLUTE#
CONNELLY LONE STAR
 ELLEGRA OF CONANGA 527C#

MUSGRAVE 316 EXCLUSIVE
EXCLUSIVE DEANNA H24 LLR
 BLACK DIAMOND DEANNE LLR

S A V FINAL ANSWER 0035#
 THOMAS MISS LUCY 5152
 PLATTEMERE WEIGH UP K360#
 ELSHA OF CONANGA 138V
 LD CAPITALIST 316#
 MUSGRAVE PRIM LASSIE 163-386
 S S BLACK GRANITE D4
 WISE DEANNE Z204 LLR#

Act. BW 66
 205 WT 667
 Yrig ADJ 1117
 CALVING EASE ★★★

CED	BW	WW	YW	Milk		
12	-0.3	86	143	30		
Marb	RE	\$M	\$W	\$B	\$C	DAM PRODUCTION
0.66	0.65	65	89	126	228	1 WR 99. 1 YR 98

- North Star K1 is a heifer bull with a near perfect EPD matrix.
- Genomically he ranks in the top 2% of the breed for WW and top 6% of the breed for YW.
- He has a royal pedigree containing 6 Pathfinders.
- Dam is a first calf heifer.

77**LOST LAKE RAVE K250**

DOB: 2/24/22 TAT: K250 REG: 20516519



RBM RAVE
BAR RAVE 006
 BAR MISS PLAYBOOK 805

LOST LAKE PROFESSOR Y411
HIGH SCHOOL HEROINE C236 LLR
 HEROINE IN FOCUS W84 LLR

JINDRA ACCLAIM#
 RBM POLLY B66#
 TEX PLAYBOOK 5437#
 BAR MISS RESOURCE 609
 KG WISDOM 9402
 LEAD ON WENDY 1286 DRF
 WC KNOCKOUT 702T
 HEROINE SEAL T374 LLR

Act. BW 72
 205 WT 666
 Yrig ADJ 1058
 CALVING EASE ★★★

CED	BW	WW	YW	Milk		
11	-1.3	46	78	39		
Marb	RE	\$M	\$W	\$B	\$C	DAM PRODUCTION
0.26	0.38	71	64	85	181	5 WR 99. 2 YR 97

- Rave K250 is a heifer bull.
- Genomically he ranks in the top 15% for BW and the top 14% for CED.
- You'll sleep at night calving the heifers he is bred to.

78**LOST LAKE URBAN K39**

DOB: 1/20/22 TAT: K39 REG: 20516537



CONNELLY UPTOWN 098E#
KPHU 4007
 KPHU 1004

KREIN PT SOCKET 534
MINNIE POWER H260 LLR
 AIM HIGH MINNIE D164 LLR

SITZ UPWARD 307R#
 JACE OF CONANGA 4660 818N
 G A R PREDESTINED#
 DIRECTIONS PERFORMISS 578
 PA POWER TOOL 9108#
 RIVER HILLS ROSA X374
 KG SURE SHOT 0266
 MINNIE LOCK 3036 LLR

Act. BW 88
 205 WT 666
 Yrig ADJ 1156
 CALVING EASE ★★

CED	BW	WW	YW	Milk		
3	1	61	99	37		
Marb	RE	\$M	\$W	\$B	\$C	DAM PRODUCTION
0.39	0.9	64	71	103	198	1 WR 98. 1 YR 100

- Urban K39 has a famous, well recognized pedigree.
- Dam is a first calf heifer.
- Extended in his design.

**LOT 78****79****LOST LAKE CHAIN DRIVE K76**

DOB: 1/31/22 TAT: K76 REG: 20516547



V N A R TEN X 3304
LOST LAKE TEN SPEED G205
 UNION LASS B10 LLR#

WILL BLACK GOLD F10
GRANITE LADY H67 LLR
 FOREVER LADY F64 LLR#

A A R TEN X 7008 S A#
 V N A R KEM 8047
 WAR ALLIANCE 9126 6006#
 SELECT LASS Z3 LLR
 FF BLACK GOLD JF C19
 WILLEKES DATELINE 60D
 SYDGEN EXCEED 3223#
 LADY LOCKET Z143 LLR

Act. BW 80
 205 WT 643
 Yrig ADJ 1121
 CALVING EASE ★★★

CED	BW	WW	YW	Milk		
8	1.6	64	120	27		
Marb	RE	\$M	\$W	\$B	\$C	DAM PRODUCTION
0.73	0.32	39	56	164	252	1 WR 95. 1 YR 99

- Chain Drive K76 definitely has heifer bull credentials.
- He also has growth, genomically ranks in the top 36% for WW and the top 19% for YW.
- His sire is a bull raised at Lost Lake, a grandson of Ten X.
- Dam is a first calf heifer.

80**LOST LAKE RESOLVE K7**

DOB: 1/14/22 TAT: K7 REG: 20516545



SYDGEN MULTI TOOL 2432
SYDGEN RESOLVE 7132
 SYDGEN DIXIE ERICA 5104

WRAF SPECIAL BRONC 874
RODEO PRIMROSE H6 LLR
 FAITH OF PRIMROSE F5 LLR

PA POWER TOOL 9108#
 SYDGEN ESTER 9089
 SYDGEN FATE 2800#
 WERNER DIXIE ERICA 3045
 BALDRIDGE BRONC#
 WRAF ZARA PANARAMA#
 SYDGEN TRUST 3008
 CONSENT BY PRIMROSE D266 LLR

Act. BW 81
 205 WT 637
 Yrig ADJ 1122
 CALVING EASE ★★★

CED	BW	WW	YW	Milk		
12	-0.2	68	124	32		
Marb	RE	\$M	\$W	\$B	\$C	DAM PRODUCTION
0.46	0.98	61	73	132	232	1 WR 94. 1 YR 99

- Resolve K7 is a heifer bull.
- Genomically, he ranks in the top 26% for WW and the top 11% for YW.
- Dam is a first calf heifer.

81 - COMMERCIAL BULL -
 DOB: 2/11/22 TAT: K164 REG: 626788665

SYDGEN FATE 2800#
KARMA JUANADA E49 LLR
 JUANADA LIGHTS OUT X125 LLR#

SYDGEN TRUST 6228#
 SYDGEN HEROINE 9808
 WC KNOCKOUT 702T
 PICTURE JUANADA U9 LLR

Act. BW 68
 205 WT 672
 Yrig ADJ
 CALVING EASE

CED	BW	WW	YW	Milk
-----	----	----	----	------

Marb	RE	\$M	\$W	\$B	\$C	DAM PRODUCTION
3 WR 95. 1 YR 96						

- K164 is a commercial bull with a low birth weight.
- Genomically he ranks in the top 16% for CWT and top 8% for RE. He also is in the top 19% for both WW and YW. Conclude that he should produce a large quantity of quality red meat!

82 - COMMERCIAL BULL -
 DOB: 2/18/22 TAT: K216 REG: 626788713

MARDA SWAGGER 463
WALK IN THE GARDEN E209 LLR
 KOCKOUT ROSE W50 LLR#

CONNELY CONFIDENCE 0100#
 MF BLACKBIRD 51
 WC KNOCKOUT 702T
 TRADEMARK PRIMROSE T265 LLR

Act. BW 84
 205 WT 700
 Yrig ADJ
 CALVING EASE

CED	BW	WW	YW	Milk
-----	----	----	----	------

Marb	RE	\$M	\$W	\$B	\$C	DAM PRODUCTION
4 WR 101. 1 YR 101						

- K216 is a commercial bull that genomically ranks in top 12% for BW and top 6% for HP.

83 - COMMERCIAL BULL -
 DOB: 3/18/22 TAT: K363 REG: 626788856

KREIN PT SOCKET 534
LOCK IT IN ELONA F160 LLR
 ELONAS LOCKET Z160 LLR

PA POWER TOOL 9108#
 RIVER HILLS ROSA X374
 LOST LAKE CHAIN
 LEAD ELONA 1166 LLR

Act. BW 61
 205 WT 710
 Yrig ADJ
 CALVING EASE

CED	BW	WW	YW	Milk
-----	----	----	----	------

Marb	RE	\$M	\$W	\$B	\$C	DAM PRODUCTION
2 WR 108. 1 YR 109						

- K363 is a young commercial bull with a low BW.

LLR Bull Development Center



Kate Lorie

LOT 80



101**KANSAS QUEEN K26 LLR**

DOB: 1/17/22 TAT: K26 REG: 20564757

ANGUS
Powered by **NEGGY****G A R ASHLAND**
G A R KANSAS
CHAIR ROCK MOMENTUM 6057**MARDA DOUBLE VISION 665**
SIGHT FOR SORE EYES H96 LLR
PIRATES DUCHESS B287 LLRG A R EARLY BIRD
CHAIR ROCK AMBUSH 1018
G A R MOMENTUM
CHAIR ROCK SURE FIRE 4060
JINDRA DOUBLE VISION#
MF PRIDE 40#
LOST LAKE PIRATE Y1
QUEEN ELIZABETH X272 LLRAct. BW 82
205 WT 652
Yrfg ADJ 983CALVING
EASE

CED	BW	WW	YW	Milk
8	1.5	73	125	23

Marb	RE	\$M	\$W	\$B	\$C	DAM PRODUCTION
1.08	0.81	58	66	167	275	1 WR 103. 1 YR 102

- Kansas Queen K26 has excellent EPDs, speaking to strong maternal, growth, fertility, and carcass. Out of a top AI sire and a first calf heifer.

102**A TO Z JUANADA K57 LLR**

DOB: 1/27/22 TAT: K57 REG: 20566658

ANGUS
Powered by **NEGGY****EXAR SPREAD 5767B**
B & D FULL SPECTRUM
DAM PROUD A16 B & D**OCC ULTIMATE ANSWER 520**
RIPOSTE JUANADA G297 LLR
JEWEL JUANADA W82 LLRRITO 9Q20 OF RITA 5F56 GHM#
BOBO RITA 1559
HOOVER DAM#
IRON PRIDE Y180 B & D
OCC ULTIMATE ANSWER 118
OCC GINA 227
BHC PAYWEIGHT 654
KD JUANADA 1020 DRFAct. BW 86
205 WT 677
Yrfg ADJ 954CALVING
EASE

CED	BW	WW	YW	Milk
5	2.4	66	120	29

Marb	RE	\$M	\$W	\$B	\$C	DAM PRODUCTION
0.37	0.42	59	63	135	234	2 WR 108. 2 YR 103

- A to Z Juanada K57 has a WR of 105 and a YR of 103.
- Her sire was bred and raised at Lost Lake.
- Dam is a top producing cow.

103**JUDITH BASIN ANN K75 LLR**

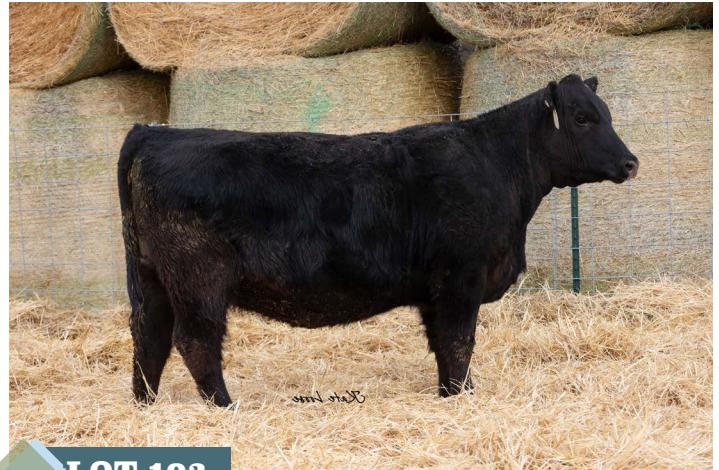
DOB: 1/31/22 TAT: K75 REG: 20574540

ANGUS
Powered by **NEGGY****DL SONIC 444#**
CAR HOBSON
DIAMOND PERFECTION 481E#**KREIN PT SOCKET 534**
POWER CORD ANN F275 LLR#
ANN OF CERTAINTY A255 LLRKG SOLUTION 0018#
DL BARBARA 792
STILL IN THE ROUGH 201
DIAMOND PERFECTION 0224
PA POWER TOOL 9108#
RIVER HILLS ROSA X374
KG SURE SHOT 0266
ANN OF MIRROR U17 LLRAct. BW 86
205 WT 699
Yrfg ADJ 960CALVING
EASE

CED	BW	WW	YW	Milk
5	0.9	81	142	25

Marb	RE	\$M	\$W	\$B	\$C	DAM PRODUCTION
0.34	0.25	64	74	109	205	3 WR 106. 3 YR 100

- Judith Basin Ann K75 has a WR of 109 and a YR of 104.
- Genomically she has fertility ranking in the top 16% for SC and top 11% for HP; Docility with ranking in the top 12%; and growth with ranking in the top 6% for WW and the top 7% for YW.
- Out of the Hobson bull and a Pathfinder cow.
- A real gem here!

**LOT 103****104****BLACK JUANADA K118 LLR**

DOB: 2/4/22 TAT: K118 REG: 20583788

ANGUS
Powered by **NEGGY****CONNELLY BLACK GRANITE#**
BAR R JET BLACK 5063
BAR R IRIS ANITA 0113**MF FINAL ANSWER 052**
JUANADAS RESPONSE C259 LLR#
RIGHT JUANADA T122 LLRCONNELLY CONSENSUS 7229#
EURA ELGA OF CONANGA 9109#
SITZ UPWARD 307R#
BAR R ANITA 7081
S A V FINAL ANSWER 0035#
MF KITTY 87#
BR RIGHT TIME 338-54
JUANADAS SUN 2612 D R FAct. BW 88
205 WT 674
Yrfg ADJ 957CALVING
EASE

CED	BW	WW	YW	Milk
6	2.8	75	141	27

Marb	RE	\$M	\$W	\$B	\$C	DAM PRODUCTION
0.36	0.61	44	64	167	261	6 WR 105. 4 YR 101

- Black Juanada K118 has a WR of 105 and a YR of 104.
- Genomically, she ranks in the top 10% for WW and the top 3% for YW.
- Her pedigree is a genetic powerhouse with 7 Pathfinders, including the Dam herself.

**LOT 104**

105 LADY OF THE LAKE K127 LLR

DOB: 2/5/22 TAT: K127 REG: 20583590



CONNEALY BLACK GRANITE#
S S BLACK GRANITE D4
 LUCY S S W58#

CONNEALY CONSENSUS 7229#
 EURA ELGA OF CONANGA 9109#
 C R A BEXTOR 872 5205 608#
 LUCY S S S71#
 S A V 8180 TRAVELER 004#
 GARRET'S BLACKCAP 4160
 LOST LAKE SENSATION 3117
 LADY OF THE LOST LAKE 2407

Act. BW 90
 205 WT 720
 Yrig ADJ 946
 CALVING EASE

GARRET'S 004 4166

LADY OF THE LAKE Y208 LLR

SENSATIONAL LADY LLR 2789

CED	BW	WW	YW	Milk
4	2.7	62	103	34

Marb	RE	\$M	\$W	\$B	\$C	DAM PRODUCTION
0.35	0.39	59	63	103	193	5 WR 100. 4 YR 101

• Lady of the Lake K127 has both a WR and YR of 100.



LOT 105

106 FAST EVERELLA K146 LLR

DOB: 2/8/22 TAT: K146 REG: 20564383



V N A R T E N X 3304
LOST LAKE TEN SPEED G205
 UNION LASS B10 LLR#

A A R T E N X 7008 S A#
 V N A R K E M 8047
 W A R A L L I A N C E 9126 6006#
 S E L E C T L A S S Z 3 L L R
 K C F B E N N E T T A B S O L U T E #
 W U L F S H A R T L E Y E L I N E 5917C
 K G S U R E S H O T 0266
 E V E R E L L A C O L L A B O R A T E Y 2 L L R

Act. BW 78
 205 WT 667
 Yrig ADJ 993
 CALVING EASE

WULFS ABSOLUTE A517E
ABSOLUTE & FOREVER H221 LLR
 SNAPSHOT EVERELLA D152 LLR

CED	BW	WW	YW	Milk
-1	2.1	67	112	22

Marb	RE	\$M	\$W	\$B	\$C	DAM PRODUCTION
0.49	0.45	59	61	122	217	1 WR 105. 1 YR 103

• Fast Everella K146 has a WR of 105 and a YR of 103.
 • Dam is a first calf heifer.



LOT 106

107 EVOLVING ANNE K167 LLR

DOB: 2/11/22 TAT: K167 REG: 20564384



V A R G E N E R A T I O N 2100#
8N GENERATION 667
 8N ENCHANTRESS 119

CONNEALY CONSENSUS 7229#
 SANDPOINT BLACKBIRD 8809
 HOOVER DAM#
 BASIN ENCHANTRESS R256
 TC GRIDIRON 258#
 FOUR ACE HEATHER LASS 302#
 WC KNOCKOUT 702T
 ANTARTICA T80 LLR

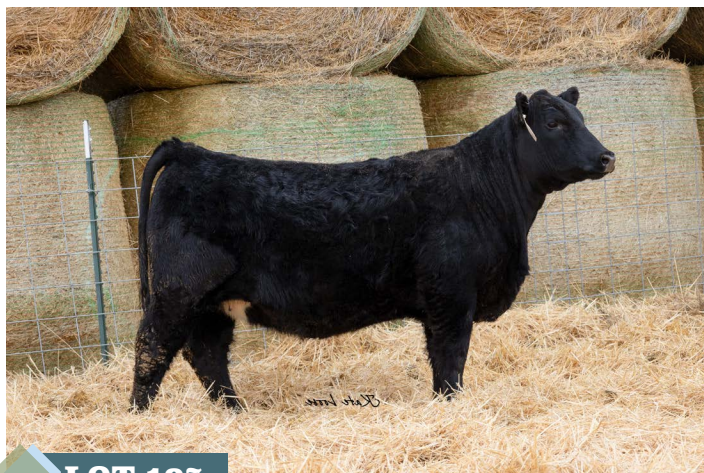
Act. BW 81
 205 WT 682
 Yrig ADJ 952
 CALVING EASE

FOUR ACE GRIDIRON 801
IRON ANNE B190 LLR
 KNOCKOUT ANNE W33 LLR

CED	BW	WW	YW	Milk
7	0.7	71	120	26

Marb	RE	\$M	\$W	\$B	\$C	DAM PRODUCTION
0.35	0.54	43	67	129	210	6 WR 98. 6 YR 98

• Evening Anne K167 has a WR of 106 and a YR of 103.
 • Her EPDs are balanced.



LOT 107

108 DESANNE DEPOSIT K182 LLR

DOB: 2/13/22 TAT: K182 REG: 20564386 **ANGUS**
Powered by NGS

BASIN PAYCHECK 5249#
BASIN PAYCHECK 0661
BASIN HEATHER BLOOM 6235
KREIN PT SOCKET 534
RACHET UP DESANNE G207 LLR
WISE DEANNE Z204 LLR#

BASIN PAYWEIGHT 1682#
 BASIN LUCY 3150
 V A R DISCOVERY 2240#
 BASIN HEATHER BLOOM 4213
 PA POWER TOOL 9108#
 RIVER HILLS ROSA X374
 KG WISDOM 9402
 DESANNE ON THE ROAD W63 LLR

Act. BW 80
 205 WT 675
 Yrlg ADJ 947
 CALVING EASE

CED	BW	WW	YW	Milk	DAM PRODUCTION	
10	-0.1	68	121	34	2 WR 96.2	2 YR 97
Marb	RE	\$M	\$W	\$B	\$C	DAM PRODUCTION
0.86	0.34	64	72	125	226	2 WR 96.2 YR 97

- Desanne Deposit K182 has a WR of 105 and a YR of 102.
- Genetically, she is nicely balanced.



LOT 108

109 UNRIVALED ANNE K224 LLR

DOB: 2/22/22 TAT: K224 REG: 20564387 **ANGUS**
Powered by NGS

C BAR UNCONTESTED 6209
HILLTOP UNCONTESTED 482H
HILLTOP BLACKCAP 260
FOUR ACE GRIDIRON 801
CHEERLEADER ANNE A106 LLR
KNOCKOUT ANNE W33 LLR

S A V TEN SPEED 3022#
 C BAR FOREVER LADY 405
 HILLTOP ENTENSE THUNDER 0216
 HT BLACKCAP CP 890#
 TC GRIDIRON 258#
 FOUR ACE HEATHER LASS 302#
 WC KNOCKOUT 702T
 ANTARTICA T80 LLR

Act. BW 80
 205 WT 664
 Yrlg ADJ 958
 CALVING EASE

CED	BW	WW	YW	Milk	DAM PRODUCTION	
9	2.1	77	131	11	7 WR 100.6	6 YR 102
Marb	RE	\$M	\$W	\$B	\$C	DAM PRODUCTION
0.25	1.1	54	52	159	260	7 WR 100.6 YR 102

- Unrivaled Anne K224 has both a WR and a YR of 103.
- Genomically, she ranks in the top 8% for WW, top 23% for YW and top 1% for HP.
- Her sire, purchased from Hilltop Angus in Denton, MT has good fertility, maternal, and carcass traits.
- Dam is a good producing cow.

110 EBONY PRIDE K234 LLR

DOB: 2/22/22 TAT: K234 REG: 20564388 **ANGUS**
Powered by NGS

BAR R JET BLACK 5063
WOIRHAYE JET SETTER 0755
M A R BLACKCAP EMPRESS 1755
BYERGO/DOUBLE GG BLACKSTONE
EBONY PRIDE G49 LLR
PROUD OF THE PLAY Y4 B&D

CONNELLY BLACK GRANITE#
 BAR R IRIS ANITA 0113
 PA FORTITUDE 2500#
 SJH BLACKCAP EMPRESS B013
 BYERGO BLACK MAGIC 3348
 BYERGO MAY 2871
 FOUR ACE GRIDIRON 801
 PRIDE OF SOLUTION W44 B&D

Act. BW 85
 205 WT 651
 Yrlg ADJ 926
 CALVING EASE

CED	BW	WW	YW	Milk	DAM PRODUCTION	
6	2.3	81	141	30	2 WR 101.2	2 YR 103
Marb	RE	\$M	\$W	\$B	\$C	DAM PRODUCTION
0.41	1.18	92	79	163	303	2 WR 101.2 YR 103

- Ebony Pride K234 has an EPD matrix one can be "proud" of having.
- Genomically, she ranks in the top 15% of the breed for WW, top 17% for YW, top 11% for HP, top 15% for Doc, and top 2% for RE. That covers a lot of bases!
- Her dam is proving to be a top producer.

111 ENHANCED MISTY K248 LLR

DOB: 2/24/22 TAT: K248 REG: 20564389 **ANGUS**
Powered by NGS

SYDGEN ENHANCE
BASIN ENHANCE 9338
BASIN LUCY 3150
MARDA SWAGGER 463
SWAGGERS MISTY F61 LLR
MYSTERIOUS VANITY Z202 LLR

SYDGEN EXCEED 3223#
 SYDGEN RITA 2618
 BASIN RAINMAKER P175#
 BASIN LUCY 1667
 CONNEALY CONFIDENCE 0100#
 MF BLACKBIRD 51
 APEX VANGUARD 136
 GOLDEN MIST 252 LLR

Act. BW 83
 205 WT 696
 Yrlg ADJ 1013
 CALVING EASE

CED	BW	WW	YW	Milk	DAM PRODUCTION	
7	0.7	83	145	24	3 WR 103.3	3 YR 104
Marb	RE	\$M	\$W	\$B	\$C	DAM PRODUCTION
0.42	0.55	68	76	155	269	3 WR 103.3 YR 104

- Enhanced Misty K248 has a WR of 108 and a YR of 109.
- Genomically, she does well in the maternal traits but also ranks in the top 9% for WW and the top 20% for YW.
- Her Swagger dam is a top producing cow.

112**EPIC REBECCA K292 LLR**

DOB: 3/2/22 TAT: K292 REG: 20564390

ANGUSCS
Presented by3F EPIC 4631#
FISHER EPIC 884
FROSTY ELBA 3505KG WISDOM 9402
WISE REBECCA A213 LLR
IMPROVED REBECCA T298 LLRVARILEK PRODUCT 2010 04
ZEBU QUEEN 1072
S A V RENOWN 3439#
FROSTY ELBA 283
SITZ WISDOM 481T#
DJ BARBARA PERFECTION S034#
COREY A IMPROVEMENT 502
FAMES REBECCA 2382 LLRAct. BW 88
205 WT 663
Yrig ADJ 961
CALVING EASE

CED	BW	WW	YW	Milk
7	2	60	121	31

Marb	RE	\$M	\$W	\$B	\$C	DAM PRODUCTION
0.71	0.39	76	58	145	264	6 WR 106. 4 YR 106

- Epic Rebecca K292 has a WR of 103 and a YR of 104.
- Genomically, she ranks in the top 6% for YW and in the top 12% for Docility.
- Her dam is another top producing cow in our herd.

**FOOTNOTE FOR
COMMERCIAL HEIFERS**

This year, our sale offering includes 9 select open commercial heifers. They come from our registered and commercial herds. Sires are the same ones as their registered herd mates. From birth, they have been managed alongside our registered replacement heifers. This includes the same vaccinations and all other health care measures. They currently average 850 lbs. in weight and are ready to breed. You can build a quality herd with these gals!

We will sell them in lots of 4 and 5, sorted by age. Group 1 were born 1/17 to 2/6/2022 and Group 2 were born 2/8 to 3/9/2022. Buyers may select as many heifers in a Group as they want, taking consecutive lot numbers from oldest to youngest.

115**- COMMERCIAL HEIFER -**

DOB: 1/17/22 TAT: K27 REG: 626788762

CONNEALY CONFIDENCE 0100#
MARDA SWAGGER 463
MF BLACKBIRD 51

HARB RESOURCE 217

CONNEALY TOBIN
BECKA GALA OF CONANGA 8281
CONNEALY RIGHT ANSWER 746#
MF BLACKBIRD 82
S A V RESOURCE 1441#
DIAMOND BELLE NELLIE 702Y
LOST LAKE CHAINAct. BW 76
205 WT 655
Yrig ADJ 924
CALVING EASE

CED	BW	WW	YW	Milk
-----	----	----	----	------

Marb	RE	\$M	\$W	\$B	\$C	DAM PRODUCTION
------	----	-----	-----	-----	-----	----------------

- Commercial heifer.

116**- COMMERCIAL HEIFER -**

DOB: 1/24/22 TAT: K49 REG: 626793176

EZAR GOLD RUSH 6001
BASIN GOLD RUSH 9129
BASIN JOY 5305V A R DISCOVERY 2240#
V A R BLACKCAP 1059
BASIN ADVANCE 3134#
BASIN JOY 2015

LOST LAKE SPEAKER U368

Act. BW 91
205 WT 700
Yrig ADJ 993
CALVING EASE

CED	BW	WW	YW	Milk
-----	----	----	----	------

Marb	RE	\$M	\$W	\$B	\$C	DAM PRODUCTION
------	----	-----	-----	-----	-----	----------------

- Commercial heifer.

117**- COMMERCIAL HEIFER -**

DOB: 2/2/22 TAT: K102 REG: 626788624

CONNEALY BLACK GRANITE#
S S BLACK GRANITE D4
LUCY S S W58#

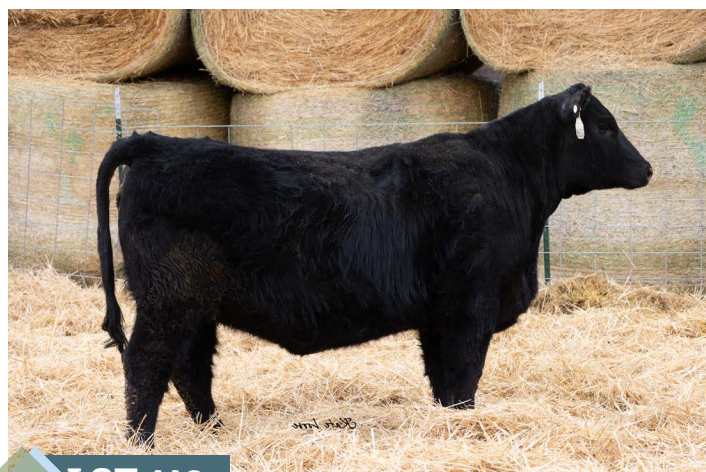
R44 GAME DAY 1956

CONNEALY CONSENSUS 7229#
EUR A ELGA OF CONANGA 9109#
C R A BEXTOR 872 5205 608#
LUCY S S S71#
GDAR GAME DAY 449#
R44 EOLA LINCOLN 956
FOUR ACE GRIDIRON 801Act. BW 70
205 WT 645
Yrig ADJ 901
CALVING EASE

CED	BW	WW	YW	Milk
-----	----	----	----	------

Marb	RE	\$M	\$W	\$B	\$C	DAM PRODUCTION
------	----	-----	-----	-----	-----	----------------

- Commercial heifer.

**LOT 116**

118**- COMMERCIAL HEIFER -**

DOB: 2/6/22 TAT: K133 REG: 626788642

CONNEALY BLACK GRANITE#
S S BLACK GRANITE D4
LUCY S S W58#

M V C C NEBRASKA-1409

CONNEALY CONSENSUS 7229#
EURR ELGA OF CONANGA 9109#
C R A BEXTOR 872 5205 608#
LUCY S S S71#
MEADOW ACRES NEBRASKA 70
MVCC RITO DUTCHESS 054-1176

Act. BW 85

205 WT 651

Yrig ADJ 934

CALVING
EASE

CED BW WW YW Milk

Marb RE \$M \$W \$B \$C DAM PRODUCTION

• Commercial heifer.

120**- COMMERCIAL HEIFER -**

DOB: 2/13/22 TAT: K178 REG: 626788677

JINDRA BLACKOUT
LOST LAKE ECLIPSE H4
POWER SOCKET JUANADA LLR

BASEBALL ELONA A231 LLR

JINDRA ACCLAIM#
JINDRA JUDY J 1314 3150
KREIN PT SOCKET 534
HEARTLAND JUANADA A112 LLR

Act. BW 84

205 WT 641

Yrig ADJ 916

CALVING
EASE

CED BW WW YW Milk

Marb RE \$M \$W \$B \$C DAM PRODUCTION

• Commercial heifer.

119**- COMMERCIAL HEIFER -**

DOB: 2/8/22 TAT: K143 REG: 626788645

CONNEALY CONFIDENCE 0100#
MARDA SWAGGER 463
MF BLACKBIRD 51

SCHOOL BELL JUANADA B286 LLR

CONNEALY TOBIN
BECKA GALA OF CONANGA 8281
CONNEALY RIGHT ANSWER 746#
MF BLACKBIRD 82

Act. BW 81

205 WT 707

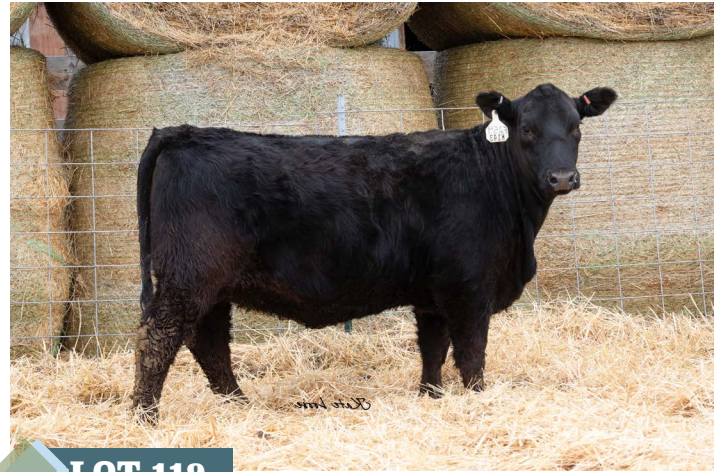
Yrig ADJ 877

CALVING
EASE

CED BW WW YW Milk

Marb RE \$M \$W \$B \$C DAM PRODUCTION

• Commercial heifer.

**LOT 119**

121 - COMMERCIAL HEIFER -

DOB: 2/23/22 TAT: K242 REG: 626793150

V N A R T E N X 3304
LOST LAKE TEN SPEED G205
 UNION LASS B10 LLR#

A A R T E N X 7008 S A#
 V N A R K E M 8047
 W A R A L L I A N C E 9126 6006#
 S E L E C T L A S S Z 3 L L R

LOST LAKE CHAIN

Act. BW	80
205 WT	669
Yrig ADJ	909
CALVING EASE	

CED	BW	WW	YW	Milk
-----	----	----	----	------

Marb	RE	\$M	\$W	\$B	\$C	DAM PRODUCTION
------	----	-----	-----	-----	-----	----------------



LOT 121

• Commercial heifer.

122 - COMMERCIAL HEIFER -

DOB: 2/26/22 TAT: K264 REG: 626788757

JUANADA JUSTICE Z66 LLR
 M V C C NEBRASKA-1409
NEBRASKA JUANADA A173 LLR
 TEAM JUANADA 105 LLR

SYDGEN MANDATE 6079#
 RIGHT JUANADA T122 LLR
 MEADOW ACRES NEBRASKA 70
 MVCC RITO DUTCHESS 054-1176
 W A R A L L I A N C E 9126 6006#
 B U L L S E Y E J U A N A D A 1113 LLR

Act. BW	90
205 WT	668
Yrig ADJ	918
CALVING EASE	

CED	BW	WW	YW	Milk
-----	----	----	----	------

Marb	RE	\$M	\$W	\$B	\$C	DAM PRODUCTION
------	----	-----	-----	-----	-----	----------------

123 - COMMERCIAL HEIFER -

DOB: 3/9/22 TAT: K333 REG: 626788818

JUANADA JUSTICE Z66 LLR
MUSGRAVE AVIATOR#
BLACKCAP OF AVIATOR F23 LLR
 BLACK MATCH D144 LLR

SYDGEN MANDATE 6079#
 RIGHT JUANADA T122 LLR
 KOUPALS B&B IDENTITY#
 MCATL FOREVER LADY 1429-138
 DEPPE 125 CONSENSUS 313
 FREEDOM HOUR Z191 LLR

Act. BW	88
205 WT	686
Yrig ADJ	995
CALVING EASE	

CED	BW	WW	YW	Milk
-----	----	----	----	------

Marb	RE	\$M	\$W	\$B	\$C	DAM PRODUCTION
------	----	-----	-----	-----	-----	----------------

• Commercial heifer.



Dollar value indexes, or **\$Values**, are a tool used to select for several traits at once based on a specific breeding objective. An economic index approach takes into account genetic and economic values as well as the relationships between traits to select for profit.

American Angus Association \$Value Indexes

Maternal Weaned Calf Value (\$M), an index expressed in dollars per head, predicts profitability differences in progeny due to genetics from conception to weaning. \$M is built off of a self-replacing herd model where commercial cattlemen replace 25% of their breeding females in the first generation and 20% in subsequent generations. Remaining cull females and all male progeny are sold as feeder calves. Increased selection pressure on \$M aims to decrease overall mature cow size and improve foot structure and fertility while maintaining weaning weights consistent with today's production.

Weaned Calf Value (\$W), an index expressed in dollars per head, provides the expected difference in future progeny preweaning performance from birth to weaning. \$W assumes that producers retain 20% of their female progeny for replacements and sell the rest of their cull female and male progeny as feeder calves. Over time, increased selection pressure on \$W will increase weaning and maternal milk traits while also continuing to increase mature cow size.

Feedlot Value (\$F), an index expressed in dollars per head, is the expected average difference in future progeny performance for postweaning merit compared to progeny of other sires. The underlying objective assumes commercial producers will retain ownership of cattle through the feedlot phase and sell fed cattle on a carcass weight basis with no considerations of premiums or discounts for quality and yield grade.

Grid Value (\$G), an index expressed in dollars per carcass, is the expected average difference in future progeny performance for carcass grid merit, including quality and yield grade attributes, compared to progeny of other sires.

Beef Value (\$B), an index expressed in dollars per carcass, facilitates simultaneous multi-trait genetic selection for feedlot and carcass merit. \$B represents the expected average differences in the progeny post-weaning performance and carcass value compared to progeny of other sires. This index assumes commercial producers wean all male and female progeny, retain ownership of these animals through the feedlot phase and market these animals on a quality-based carcass grid.

Combined Value (\$C), an index expressed in dollars per head, includes all traits that make up both \$M and \$B with the objective that commercial producers will replace 20% of their breeding females per year with replacement heifers retained within their own herd. The remaining cull heifer and steer progeny are then assumed to be sent to the feedlot where the producers retain ownership of those cattle and eventually sell them on a quality-based carcass merit grid.

EPDS DIRECTLY INCORPORATED INTO EACH \$VALUE

TRAIT	MATERNAL		TERMINAL			
	\$M	\$W	\$F	\$G	\$B	\$C
CED	✓					✓
BW		✓				✓
WW	✓	✓				✓
YW			✓		✓	✓
CEM	✓					✓
Milk	✓	✓				✓
MW	✓	✓				✓
DOC	✓					✓
HP	✓					✓
Claw	✓					✓
Angle	✓					✓
DMI			✓			✓
CW			✓		✓	✓
RE				✓	✓	✓
Marb				✓	✓	✓
Fat				✓	✓	✓

SUGGESTED SALE TERMS AND CONDITIONS • AMERICAN ANGUS ASSOCIATION • February 21, 2014

UNLESS OTHERWISE EXPRESSLY STATED IN THESE SALE TERMS AND CONDITIONS OR ANY OTHER WRITTEN AGREEMENT BETWEEN THE PARTIES RELATING TO THE SALE OF ANGUS CATTLE UNDER THESE SALE TERMS AND CONDITIONS, SELLER MAKES NO OTHER WARRANTIES, EXPRESS OR IMPLIED, INCLUDING ANY IMPLIED WARRANTY OF MERCHANTABILITY OR FITNESS FOR A PARTICULAR PURPOSE, EVEN IF SUCH PURPOSE IS KNOWN TO THE PARTIES. THE REMEDIES PROVIDED IN THESE SALE TERMS AND CONDITIONS ARE THE EXCLUSIVE REMEDIES OF THE BUYER, OR ANY PARTY CLAIMING THROUGH THE BUYER, AND UNDER NO CIRCUMSTANCES WILL THE SELLER BE LIABLE FOR ANY INCIDENTAL, INDIRECT, SPECIAL, CONSEQUENTIAL, PUNITIVE OR EXEMPLARY DAMAGES UNDER ANY INDEMNITY PROVISION OR OTHERWISE.

Announcements

1. If there is any inconsistency in the terms of any sales materials, including sale books, supplement sheets or day-of-sale announcements, (i) the day-of-sale announcement will control over both the supplement sheet and the sale book, and (ii) the supplement sheet will control over the sale book.

Cash Sale

1. All sales are for cash unless satisfactory credit arrangements, including any possible reservation of security interest by the seller, have been made with the seller prior to sale.

Buyer's Risk at the Time of Sale

1. The risk of loss and injury of each animal passes to the buyer as soon as it is sold; however, it is the obligation of the seller to ensure that sold animals are fed and cared for free of charge to the buyer until loaded for shipment or until the expiration of 24 hours after the sale, whichever occurs sooner.

Identification Responsibilities

1. Prior to the sale, the seller must ensure that each animal has a readable permanent identification mark (e.g., tattoo, hot-iron brand or freeze brand) corresponding to its registration.
2. The buyer must check all permanent identification marks for accuracy upon possession and report any discrepancies or irregularities to the seller immediately.
3. In those cases where a nickname is used by the seller, the nickname must also be accompanied by the official registered name and number of the animal.

Certificates of Registration

1. A transferred certificate of registration must be furnished by the seller free of charge to the buyer for each animal within 45 days following the later of either the date of sale or upon the receipt of full payment.

Artificial Insemination (AI) Service Certificates

1. AI Service certificates will be the responsibility of the buyer unless otherwise specified by the seller.

GUARANTEES

Health

1. Unless otherwise announced, the seller guarantees that all animals are eligible for interstate shipment as required by applicable federal and state regulations.

Conformance with Registration

1. The seller guarantees that all sold animals are registered in accordance with the rules of the American Angus Association.
2. The seller guarantees to the buyer that all sold animals conform to the registration certificate as entered in the Herd Book of the American Angus Association.
3. The seller guarantees to the buyer that with respect to all females exposed to multiple service sires, each such service sire will have parentage markers on file with the American Angus Association. (As adopted February 21, 2014)

Pedigree, Performance and Genetic Information

1. The seller guarantees to the buyer that the pedigree, performance data and genetic information, as represented in any sales materials (including any sale book, supplement sheet or day-of-sale announcement), are accurate. The seller shall provide "as of" date for all information from the American Angus Association database.
2. The absence of any such designation on the pedigree of an animal, as set forth in any sales materials, does not establish that the animal in question is not a carrier of any such genetic factor.
3. In those cases where a commonly understood nickname is used by the seller, the seller guarantees the pedigree of the animal based on the commonly understood nickname.

Sex

1. Unless otherwise represented by the seller, there are no guarantees that offspring will be of a particular sex.

Breeding Guarantees

1. The seller guarantees that all animals are breeders, with the exception of: (a) calves under 12 months of age at the time of the sale; (b) animals shown after the sale has occurred (in such cases, the breeding guarantees, if any, will be those guarantees as are agreed upon between the seller and the buyer); (c) animals who suffer injury or disease following the sale; and (d) animals subjected to gross negligence by or willful misconduct on the part of the buyer.
2. The seller guarantees that all bulls are breeders for a period of 90 days following the initial turn out with buyer's herd, but only if such bulls are at least 12 months old at the time of sale and have not been allowed to run with the herd until at least 14 months of age. A bull that settles a cow by natural service and passes a fertility test performed by a competent veterinarian or reproductive technician mutually agreed upon by the buyer and the seller will be considered a breeder. Unless otherwise agreed by the buyer and the seller, the seller makes no guarantees with respect to the ability to freeze semen.
3. Cows with calves at their side are presumed to be breeders with no further fertility guarantee.
4. "Safe-in-calf" females are guaranteed by the seller to have been examined by a competent veterinarian or reproductive technician and determined to be safe-in-calf by examination or other proven method (e.g., ultrasound, pregnancy blood tests, and rectal palpation).
5. "Served" females are not guaranteed to be in calf.
6. "Pasture-bred" females have been exposed but are not guaranteed to be in calf.
7. "Open" females are guaranteed by the seller to be without calf.
8. Donor females:
 - a. Unless otherwise agreed by the buyer and the seller, a female that has been used in an embryo transfer program is not guaranteed to be a breeder after the date of the sale.
 - b. Unless otherwise agreed by the buyer and the seller, a female is not guaranteed to be a breeder after the date of the sale, when that female is to be used, or attempted to be used, in an embryo transfer program.
9. The seller makes the following guarantees with respect to all "pregnant recipients": (i) that the female is pregnant, (ii) that the resulting calf is of the pedigree represented, and (iii) that the resulting calf is of the sex represented (if so represented).

Semen

1. Unless otherwise agreed by the buyer and the seller, with respect to the sale of semen the seller makes no guarantees with respect to the performance or characteristics of such semen and the buyer is purchasing such semen "as is."

Embryos

1. Embryos being offered for sale will be sold "as is" unless the seller provides additional guarantees.

Privileges of Return or Adjustment: Options

1. With the exception of any applicable transportation expenses described herein, a seller shall never be liable to a buyer for an amount greater than the original selling price of any animal sold under these Sales Terms and Conditions.
2. Unless otherwise stated, all claims for adjustment or refund must be made in writing to the seller within 180 days following the sale of the animal in question.
3. If an animal is claimed to be a non-breeder, the animal may be returned to the seller if it is in good condition and complies with the health requirements of the seller's state. At the option of the buyer, the seller may issue a credit to the buyer for use in a future purchase or provide an animal of equal value subject to the approval of buyer. If the buyer exercises either such option, the claim shall be deemed fully and satisfactorily resolved. However, in the event that the buyer requests a refund of the purchase price, the seller may, at its option, either issue a refund of the full purchase price or, shall have 180 days from the date the animal is returned to the seller's farm to conduct a trial to demonstrate the returned animal is a breeder. Refund of the full purchase price or demonstrated proof that the animal is a breeder during the test trial shall be deemed full satisfaction and settlement of the claim.

Any expense incurred for transporting an animal claimed to be a non-breeder will be the responsibility of the buyer, except that the seller will be responsible for transportation costs in excess of the distance between the buyer's farm and the location where the sale took place. If the seller proves the animal to be a breeder, it will be the obligation of the buyer to take delivery of the animal and pay all transportation expenses.

4. If a female sold as "safe in calf" proves not to be in calf, the seller must make a satisfactory adjustment on the purchase price to the buyer or, at the buyer's option, refund the purchase price upon return of the animal to the farm of the seller. Any claim for adjustment or refund under this paragraph must be made in writing to the seller on or before the first anniversary of the date of the sale.
5. If a female represented as "safe in calf" to a certain bull at the time of sale proves to have been bred to a different bull, the seller must make a satisfactory adjustment on the purchase price to the buyer or, at the buyer's option, refund the purchase price upon return of the animal to the farm of the seller. Any claim for adjustment or refund under this paragraph must be made in writing to the seller on or before the first anniversary of the date of sale.
6. If a female sold as "open" proves to be with calf, the buyer may return the animal to the farm of the seller prior to calving for a refund of the full purchase price or for another animal of equal value, whichever is acceptable to the buyer. The Seller is responsible for all transportation expenses.
7. White skin or hair must not be painted or altered. If such painting or alteration has occurred, the buyer may return the animal to the farm of the seller for a refund of the full purchase price or for another animal of equal value, whichever is acceptable to the buyer.
8. If an animal is sold and subsequently becomes ineligible for registration under the rules of the American Angus Association for reasons other than incorrect parentage, the seller must make a satisfactory adjustment on the purchase price to the buyer, or at the option of the buyer, refund the purchase price upon the return of the animal to the farm of the seller.
9. If an animal (including the offspring of a pregnant recipient) is sold and through parentage verification is proven to have incorrect parentage, as represented by the animal's certificate of registration, and for which correct parentage can be determined, the seller is obligated to make a satisfactory adjustment on the purchase price to the buyer or, at the buyer's option, refund the purchase price upon the return of the animal to the farm of the seller. Any claim for adjustment or refund under this paragraph must be made in writing to the seller on or before the second anniversary of the date of the sale.
10. If the resulting calf of a pregnancy is not of the sex represented at the time of the sale, the seller is obligated to make a satisfactory adjustment on the purchase price to the buyer or, at the buyer's option, refund the purchase price upon the return of the animal to the farm of the seller. Any claim for adjustment or refund under this paragraph must be made in writing to the seller on or before the first anniversary date of the sale.
11. Unless stated otherwise, all transportation expenses incurred will be the responsibility of the buyer, except that the seller will be responsible for transportation costs in excess of the distance between the buyer's farm and the location where the sale took place.

Disclosure or Retention of Genetic Materials

1. If seller retains any genetic materials of an animal being sold that can be used for cloning, the seller must disclose such fact to any potential buyers prior to the sale.

GENETIC CONDITIONS: REQUIRED DISCLOSURES RELATING TO CERTAIN TEST RESULTS OR POTENTIAL CARRIER STATUS OF AN ANIMAL.

1. In advance of any sales of an animal, the seller shall have the affirmative duty to notify any potential buyer of (1) any test results in which an animal for sale has tested positive (under a test and at a laboratory approved by the American Angus Association) as a carrier of any genetic conditions recognized by the American Angus Association, and (2) whether the animal has a potential carrier designation on its pedigree for any genetic condition that is recognized by the American Angus Association.

Optional Guarantee: Genetic Conditions

1. The buyer and seller may determine the scope and duration of a guarantee, if any, on an individual basis. The seller may, but is not required, to provide a guarantee to the buyer relating to genetic conditions.
2. Nothing contained herein should be construed to relieve the parties from complying fully with all the rules and policies of the Association relating to genetic conditions generally or individually.

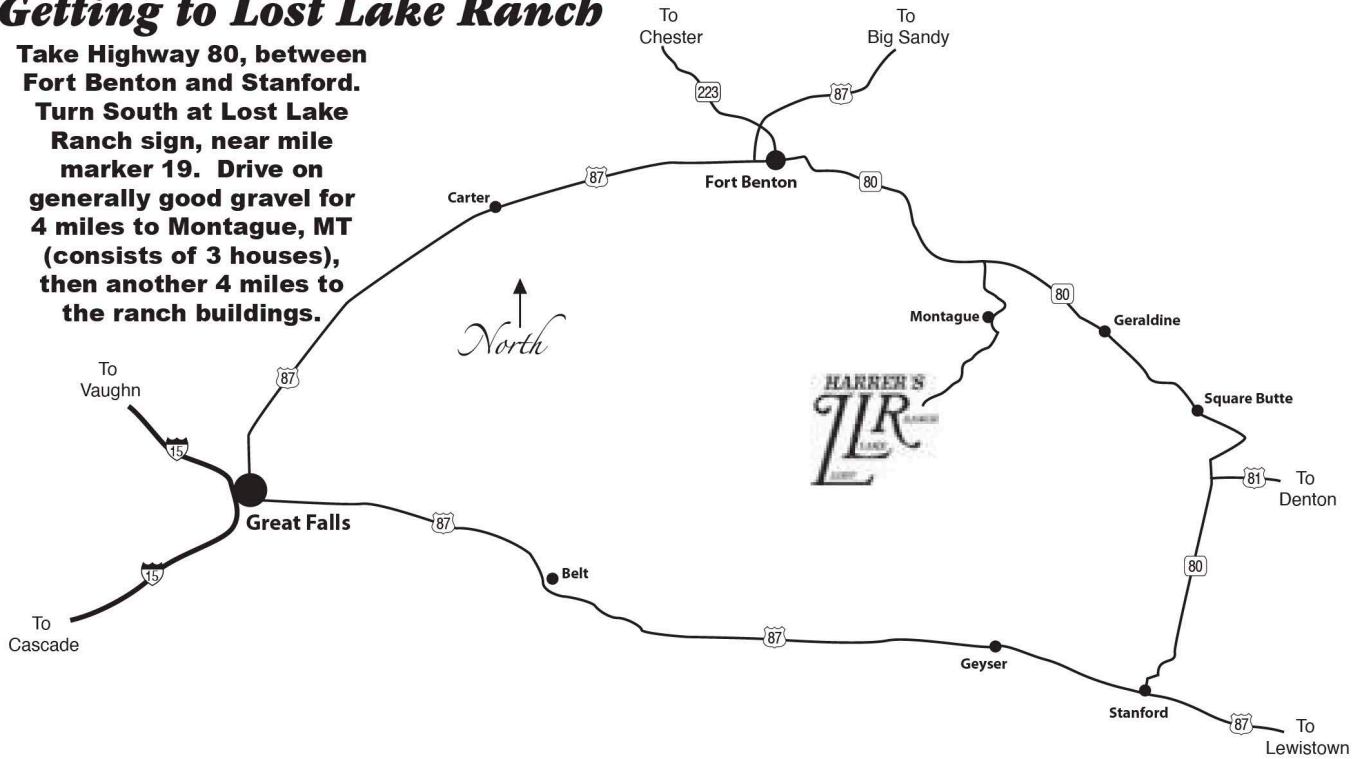
MISCELLANEOUS

1. The above terms and conditions of sale constitute a contract between the buyer and the seller of each animal and are equally binding upon both parties. Each sale or resale of an animal constitutes a separate transaction.
2. Neither the American Angus Association nor any director, officer, employee or representative of the Association or any of its related entities assumes any liability, legal or otherwise, in connection with any sale or transaction conducted under the terms of the Suggested Sales Terms and Conditions. Nor shall the American Angus Association, its directors, officers, employees or representatives assume any liability or be responsible in any way for enforcing the terms and conditions of any agreement between buyer and seller.
3. Neither the sponsor or sponsors, the sale manager, nor any other person connected with the management of the sale, assumes any liability, legal or otherwise.
4. These sale terms and conditions and all rights, obligations and duties arising hereunder and all disputes arising hereunder will be construed in accordance with, and governed by, the laws of the state in which the sale of the animal or animals occurs, without giving effect to such state's choice of law rules.

MAPS AND DIRECTIONS

Getting to Lost Lake Ranch

Take Highway 80, between Fort Benton and Stanford.
 Turn South at Lost Lake Ranch sign, near mile marker 19. Drive on generally good gravel for 4 miles to Montague, MT (consists of 3 houses), then another 4 miles to the ranch buildings.



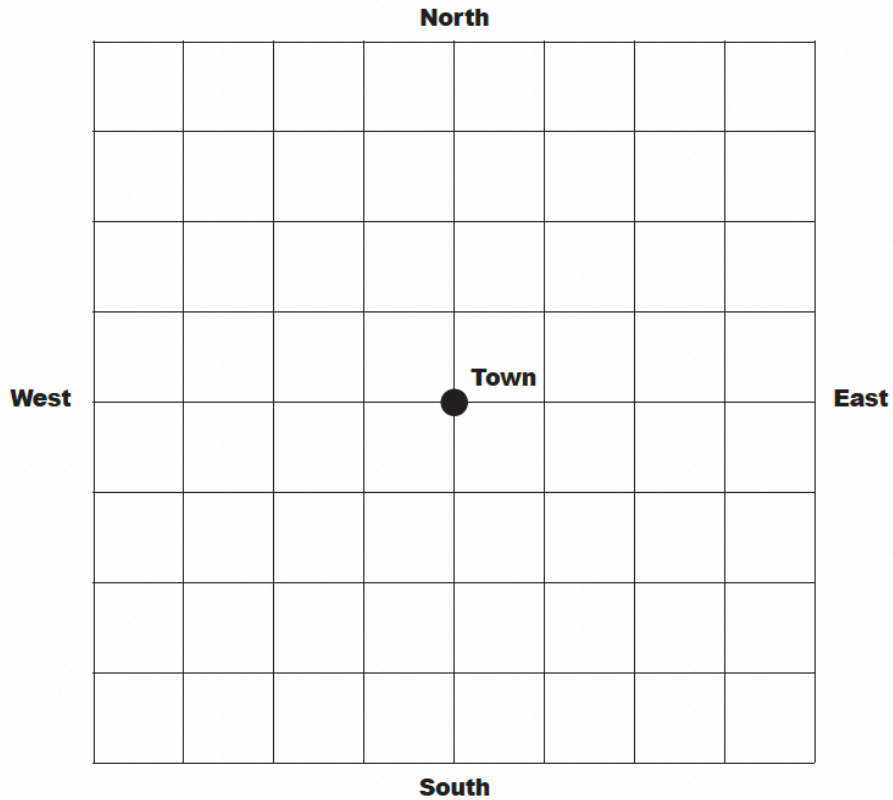
Lost Lake Sale Site



Directions to Your Ranch For Delivery of Cattle

Indicate how to get to your Ranch from nearest state highway and town.

*For questions or changes call
Jeff Schile 406/737-4315 • Cell 406/564-5978*



Will you be delivering your own cattle? Yes No How many? _____ Rebate on bulls? (\$75 each) _____

If not, When would you prefer your cattle be delivered? _____

Reminder: Free delivery within Montana for total purchases of \$3500 per buyer.

Total Distance from Town _____ miles. Phone _____

Your Name and Delivery Address _____

Will you be wintering your bull purchase(s) at Lost Lake Ranch? Yes No

Lot Numbers Purchased

Transfer Registration Certificate(s) to

Name _____ Member Code _____

***Please complete this page
and hand to clerk.***

Signed _____ Date _____



**137 EDEN ROAD
GREAT FALLS, MT 59405**



MONDAY, MARCH 27, 2023

WESTERN LIVESTOCK AUCTION / GREAT FALLS MONTANA / 1 P.M.

GRANT & DEANNA HARRER

C: 406-899-9061

H: 406-452-2010

DRHARRER@GMAIL.COM

WINDY RIDGE RANCH

KAREN & CHUCK DAVIS

406-737-4320

WINDYRIDGE@ITSTRiangle.COM

MAIN BARN

406-737-4336

JEFF SCHILE, MANAGER

406-737-4315

WM. T (BILL) HARRER

406-771-8229

BillHarrer5@gmail.com