

# *Pounds for Profit Sale*

ONLINE INTERNET AUCTION



**DECEMBER 10<sup>TH</sup>,  
11<sup>TH</sup>, & 12<sup>TH</sup>, 2023**

*56 Years of Producing  
Longevity & Functional  
Focused Cattle*

**DIAMONDDANGUS.COM  
18106 VALIER HWY  
VALIER, MONTANA 59486  
406-799-3480**





## Welcome

MANY DIFFICULT TIMES HAVE OCCURRED FOR CATTLE PRODUCERS IN RECENT HISTORY. SKY ROCKETING INPUT COSTS ARE AFFECTING EVERYONE IN THIS INDUSTRY. DIAMOND D ANGUS HAS BEEN BREEDING LOWER INPUT GENETICS FOR AS LONG AS WE HAVE BEEN IN EXISTENCE. COWS THAT WILL TAKE CARE OF THEMSELVES, RATHER THAN COWS THAT FAIL WHEN REMOVING INPUTS OUT OF DESPERATION OF SAVING MONEY. WE ARE HOPEFULLY ON THE BACK SIDE OF TWO YEARS OF EXTREME DROUGHT THAT HAS AFFECTED EVERY HERD IN OUR AREA. WE ARE VERY THANKFUL FOR THE CATTLE GENETICS THAT WE HAVE DEVELOPED OVER THE LAST 57 YEARS. WE HAVE HAD ZERO TOLERANCE FOR CATTLE THAT HAVE PROBLEMS OF ANY KIND. WE STRIVE FOR TROUBLE FREE GENETICS THAT LAST FOR MANY YEARS. DUE TO THE FACT THAT OUR CATTLE HAVE ALREADY BEEN PUT THROUGH A RIGOROUS TEST, THEY ARE ABLE TO SURVIVE MUCH BETTER THAN MOST.

THIS WILL BE OUR FOURTH YEAR OF DOING A 100 PERCENT ONLINE SALE. WE FEEL THAT THIS TYPE OF SALE WILL GIVE EVERY ONE OF OUR CUSTOMERS EQUAL OPPORTUNITIES OF PURCHASING ANY OF OUR OFFERING. BIDDING WILL START DECEMBER 10TH AND CLOSE ON THE 12TH. PLEASE CHECK OUT OUR OFFERING ON EITHER WWW.BILLPELTON.COM OR WWW.DIAMONDDANGUS.COM OUR FORAGE DEVELOPED, LONG YEARLING BULLS REPRESENT FERTILITY AND DURABILITY. MOST WERE CONCEIVED IN THE FIRST HEAT CYCLE AND ALL WERE DEVELOPED ON A 100 PERCENT FORAGE DIET, SALT AND MINERAL. WE DON'T HIDE SHORTCOMINGS BEHIND CONCENTRATE FEED, FOOT TRIMMING OR HAIR SPRAY. WE DEMAND FERTILITY, GOOD FEET, SOFT TEMPERAMENT, GOOD SCROTAL AND EYE APPEAL. SINCE THE MAJORITY OF OUR CUSTOMERS ARE COMMERCIAL PRODUCERS, THESE BULLS ARE BRED AND DEVELOPED FOR REAL WORLD CONDITION. THEIR DAUGHTERS WILL BECOME SOME OF YOUR FAVORITE COWS.

MY FATHER TAUGHT ME MANY YEARS AGO THAT ANY TIME A PERSON PUTS TOO MUCH EMPHASIS ON A TRAIT THEN SOMETHING ELSE IMPORTANT IS LOST. SO, LIFE IS TOO SHORT TO MAKE TOO MANY MISTAKES IN THE CATTLE BUSINESS. I WILL NEVER FORGET THIS GREAT ADVICE. SO WHAT YOU WILL FIND AT DIAMOND D ANGUS IS NOT EXTREME IN ANYTHING, EXCEPT, EXTREMELY FUNCTIONAL.

HOPE TO HEAR FROM YOU,

*Mark DeBoo*





# Sale Day Information

## Phones

MARK DEBOO.....406-799-3480  
 DEKOTA NICHOLS.....406-505-0509  
 BILL PELTON.....406-671-5100  
 EMAIL.....DDA@3RIVERSNET.COM  
 WEBSITE.....WWW.DIAMONDDANGUS.COM

## Payment Options

### METHOD 1

PAY FULL PURCHASE PRICE. THIS WILL ALLOW YOUR BULL OR BULLS TO BE DELIVERED FALL OF 2022 OR SPRING OF 2023. WINTERING CHARGES WILL APPLY IF YOU DECIDE TO HAVE DIAMOND D ANGUS WINTER YOUR BULLS. IF YOU WANT TO HAVE YOUR BULLS OR BULLS DELIVERED FALL OF 2022 YOU WILL HAVE THE OPTION OF BUYING INSURANCE OR NOT. IF YOU WOULD LIKE DIAMOND D ANGUS TO WINTER YOUR BULL OR BULLS INSURANCE WILL BE REQUIRED. ONLINE SALE!

### METHOD 2

YOU WILL BE REQUIRED TO PAY A NONREFUNDABLE 50% OF PURCHASE PRICE ON YOUR BULL OR BULLS. THE BALANCE OWED, INCLUDING WINTERING CHARGES WILL BE REQUIRED AT TIME OF DELIVERY. INSURANCE WILL BE REQUIRED. DELIVERY CHARGES WILL BE THE SAME AS FALL DELIVERY.

## 2/3 Interest & Full Possession

DIAMOND D ANGUS IS RETAINING ONE-THIRD REVENUE SHARING SEMEN INTEREST ON EVERY BULL SELLING IN THIS SALE. FULL POSSESSION AND FULL SALVAGE VALUE SELLS ON ALL BULLS. DIAMOND D ANGUS WILL CONTACT THE NEW OWNER IF THEY WOULD LIKE TO COLLECT SEMEN AND IT WILL BE DONE AT THE NEW OWNER'S CONVENIENCE, AND DIAMOND D ANGUS' EXPENSE.

## Herd Health

BULLS SELL 100% GUARANTEED TO BE FERTILE. WE DO NOT GUARANTEE AGAINST INJURY. HOWEVER, WE WILL PAY PARTIAL INSURANCE IF DESIRED ON BULLS \$4,000 OR OVER.

## Register to Bid

**PRE REGISTRATION IS REQUIRED FOR THE ONLINE SALE!**

## Volume Discount

DIAMOND D ANGUS OFFERS A \$100 DISCOUNT OFF THIRD BULL PURCHASES, AND \$100 OFF FOR EACH ADDITIONAL BULL PURCHASED BY A SINGLE BUYER.

## Hauling Discount

\$50.00 DISCOUNT IF YOU HAUL WITHIN ONE WEEK OF THE SALE.

## Wintering Arrangements

YOUR BULLS MAY BE WINTERED AT DIAMOND D ANGUS UNTIL THE END OF APRIL AT THE COST OF \$5.50 PER HEAD/PER DAY, UNTIL PAYABLE UPON DELIVERY OR PICKUP.

## Delivery

FREE DELIVERY ON BULLS TO CENTRAL POINTS WITHIN 500-MILE RADIUS FROM DIAMOND D ANGUS. BEYOND 500-MILE RADIUS, TO CENTRAL POINTS AT COST OF \$.25 PER MILE PER BULL ANYWHERE IN THE CONTINENTAL USA.

## Canadian Delivery

CATTLE WILL BE DELIVERED VIA SWEET GRASS. DIAMOND D ANGUS WILL PAY HALF THE COST OF HEALTH PAPERS ON ANIMALS SOLD INTO CANADA.

## Online Sale

THE SALE IS IN ONLINE THIS YEAR. YOU ARE WELCOME TO COME SEE THE CATTLE. GREAT FALLS IS SERVED BY DELTA, HORIZON AND NORTH WEST AIRLINES. GREAT FALLS IS ABOUT AN HOUR AND A HALF FROM DIAMOND D ANGUS.

## Lot Numbers

EAR TAGS AND FREEZE BRANDS WILL CORRESPOND WITH NUMBERS IN CATALOG.



# The Diamond D Advantage

**+MORE FERTILE AND WILL COVER MORE COWS**

**+WILL CONTINUE TO GAIN WEIGHT THROUGHOUT FIRST BREEDING SEASON**

**+NO BULLS' FEET OR LEGS RUINED DUE TO HOT FEED**

**+MORE YEARS OF SERVICE FROM FORAGE BULLS**

**+LESS INJURIES AND BREEDING PROBLEMS**

**+BULLS ARE MORE CONDITIONED TO THE ENVIRONMENT**

**+BULLS HAVE BEEN PUT THROUGH A RIGID TEST**

**IF YOU WANT TO PRODUCE COWS THAT WILL LAST A LONG TIME, IT IS IMPORTANT TO USE BULLS FROM A HERD THAT HAS COWS THAT HAVE PROVEN RECORD OF CALVING EVERY YEAR ON TIME FOR 10 OR MORE CALVES. WE CULL OUR HERD FOR UDDER QUALITY AND TEMPERAMENT AND REFUSE TO TRIM FEET. IF AN ANIMAL NEEDS FEET TRIMMED, WE ELIMINATE IT.**

**MOST PURE-BRED PRODUCERS WILL MAKE EXCUSES FOR THE PROBLEMS YOU SEE ON THEIR CATTLE. THE REALITY IS ALMOST EVERYTHING YOU SEE IS A RESULT OF GENETICS. WHEN YOU LISTEN TO A PRODUCER TALK MOSTLY ABOUT PERFORMANCE AND EPD NUMBERS, CHANCES ARE THEY HAVE LEFT MOST FUNCTIONAL TRAITS BEHIND AND THE GENETICS WILL NOT LAST FOR VERY MANY YEARS.**



# Timed Online Auction



## ONLINE AUCTIONS

www.BillPelton.com/Auctions

- 01 Register**  
If you are not already a user on our site, create an account.
- 02 Verify Email**  
An email will be sent to email account provided. Please click link in email to activate your account.
- 03 View Auctions**  
Enter auction you are interested in, create watchlist, place bids, update your preferences "Account".
- 04 Sale Day**  
Login with credentials provided at registration.
- 05 For Help call**  
Darci Pelton Sachdeva  
(406) 794-3174

**TUESDAY,  
DECEMBER  
12<sup>TH</sup> @ 5:00PM  
MST**

**PREBIDDING  
OPENS**

**DECEMBER  
10<sup>TH</sup>**

**AUCTION  
CLOSES @**

**5:00PM MST  
DECEMBER  
12<sup>TH</sup>**

**ONLINE INTERNET AUCTION BY PELTON LIVESTOCK  
WWW.BILLPELTON.COM/AUCTIONS**

## How This Sale Close Works

THE DIAMOND D ANGUS ONLINE AUCTION WILL CLOSE WITH HORSE RACE STYLE BIDDING OR EXTENDED BIDDING. THIS MEANS THAT WHEN THE ONLINE AUCTION EVENT COMES TO ITS SCHEDULED END TIME THERE WILL BE 5 MORE MINUTES OF EXTENDED BIDDING. IF BIDDING CONTINUES THE SALE WILL STAY OPEN UNTIL THERE IS A 5-MINUTE STRETCH WITH NO BIDDING ON ANY LOT. ONCE THERE IS A FULL 5 MINUTES WITH NO BIDDING ON ANY LOT, THE WHOLE EVENT WILL CLOSE.

THIS AUCTION IS SCHEDULED TO CLOSE AT 5:00PM ON DECEMBER 12TH.

**EXAMPLE 1:** THE AUCTION CLOSES AT 5PM AND GOES INTO EXTENDED BIDDING. IF THERE ARE NOT BIDS ON ANY LOTS BETWEEN 5PM AND 5:05PM, THE WHOLE SALE IS DECLARED CLOSED AT 5:05PM.

**EXAMPLE 2:** THE AUCTION IS SCHEDULED TO CLOSE AT 5PM AND GOES INTO EXTENDED BIDDING. THERE IS A BID ON A LOT AT 5:02PM. EVERY LOT REMAINS OPEN TO BIDS. IF THERE ARE NO BIDS ON ANY LOT BY 5:07PM, THE WHOLE SALE IS DECLARED CLOSED AT 5:07PM.

**EXAMPLE 3:** THE AUCTION IS SCHEDULED TO CLOSE AT 5PM AND GOES INTO EXTENDED BIDDING. THERE IS A BID ON A LOT AT 5:02PM. EVERY LOT REMAINS OPEN TO BIDS. ANOTHER BID IS PLACED AT 5:06PM. EVERY LOT REMAINS OPEN. ANOTHER BID IS PLACED AT 5:10PM. EVERY LOT REMAINS OPEN. IF THERE ARE NOT BIDS ON ANY LOT BY 5:15PM, THE WHOLE AUCTION IS DECLARED CLOSED AT 5:15PM.

## Creating an Account with Pelton Livestock Online Auctions

TO REGISTER, SELECT THE LOGIN/REGISTER LINK ON THE RIGHT TOP SIDE OF THE SCREEN IN THE NAVIGATION BAR. REGISTER FOR A NEW ACCOUNT BY ENTERING YOUR CONTACT INFORMATION, EMAIL ADDRESS, DESIRED PASSWORD, ETC. ONCE YOU SUBMIT THE AUCTION REGISTRATION FORM, AN EMAIL WILL BE SENT TO THE EMAIL ACCOUNT PROVIDED. PLEASE CLICK THE LINK IN THAT EMAIL TO ACTIVATE YOUR ACCOUNT. PLEASE KEEP YOUR USER INFORMATION (EMAIL ADDRESS AND PASSWORD) IN A SECURE PLACE AS YOU CAN USE THE SAME ACCOUNT LOGIN FOR ALL ONLINE AUCTIONS HOSTED BY PELTON LIVESTOCK. IF YOU HAVE ANY QUESTIONS OR NEED ASSISTANCE WITH CREATING AN ACCOUNT OR BIDDING, PLEASE CALL PELTON LIVESTOCK DARCI SACHDEVA AT 406-794-3174.

ONLY REGISTERED BIDDERS OVER THE AGE OF 18 CAN PARTICIPATE IN PELTON LIVESTOCK ONLINE AUCTIONS.

## Auction Demo Available

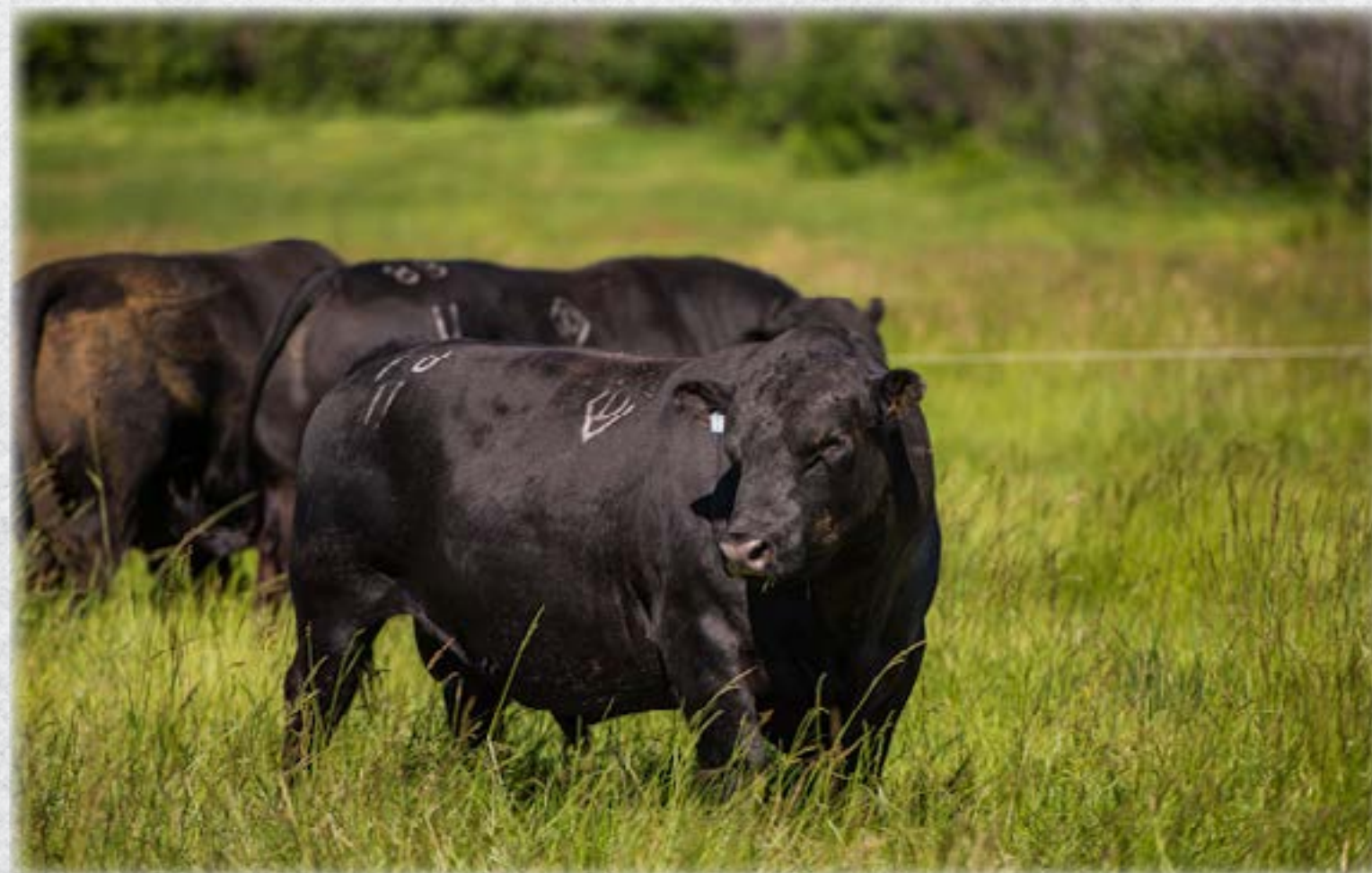
LOGIN WITH CREDENTIALS PROVIDED AT REGISTRATION AND ENTER "DEMO AUCTION" TO PRACTICE BIDDING. FOR HELP CALL DARCI PELTON SACHDEVA AT 406-794-3174.

## Is The Auction Platform Mobile Friendly?

YES, THE AUCTION PLATFORM AND ENTIRE SITE IS MOBILE FRIENDLY. SO, NO MATTER THE DEVICE (COMPUTER, CELL PHONE, TABLET, ETC.) YOU ARE UTILIZING TO VIEW AND/OR BID ON AN AUCTION, THE SITE IS RESPONSIVE TO YOUR SCREEN, SO YOU HAVE THE MOST OPTIMUM VIEWING AND BIDDING EXPERIENCE.

## Buyer FAQ

PLEASE READ THE BUYER FAQ ON THE UPPER RIGHT HAND SIDE OF THE SCREEN IN THE NAVIGATION/MENU BAR TO LEARN HOW TO BID, USE WATCH LISTS, MAXIMUM BIDS AND MORE.





# Performance Information

## Line Breeding

IN THE NOTES OF ALL THE BULLS SELLING, WE TALKED ABOUT PEDIGREES IN HOPES OF HELPING OUR CUSTOMERS UNDERSTAND OUR BREEDING PROGRAM. WE STRONGLY BELIEVE THAT OUR CUSTOMERS GREATLY BENEFIT FROM BUYING LINEBRED BULLS.

THE BENEFITS INCLUDE:

1. IF YOU LIKE WHAT YOU SEE IN A BULL OR COW FAMILY, BY LINE BREEDING IT INTENSIFITES THESE TRAITS. A LINE-BRED BULL WILL BREED MORE TRUE TO HIMSELF THAN A NON-LINE BRED BULL.

2. LINE BREEDING INTENSIFIES ALL TRAITS, GOOD AND BAD. IF GENETICALLY THERE WERE A PROBLEM, IT WOULD SHOW UP IN OUR HERD. WE WOULD IDENTIFY THE PROBLEM AND ELIMINATE THE USE OF THESE TRAITS.

3. THE COWS AND BULLS THAT WE HAVE TALKED ABOUT IN THE NOTES HAVE ALREADY GONE THROUGH MANY GENERATIONS OF LINE BREEDING AND PUT THOROUGH A VERY RIGID TEST. TO PASS THE TEST THEY NEED TO BE OF MODERATE FRAME, EASY FLESHING, ADEQUATE PERFORMANCE, STRUCTURALLY CORRECT, AND GOOD UDDER QUALITY. THE BULLS MUST BE VERY MASCULINE.

## Performance Key

**BW** - BIRTH WEIGHT

**WW** - WEANING WEIGHT

**COW/CALF RATIO** - ADJUSTED WEAN EFFICIENCY

**PERCENTAGE OF COW'S WEIGHT THAT THE CALF WEANED.**

**WEIGHT, SCROTAL, & HIP HT DATA WAS ALL PULLED 10/31/2023.**

## Calving Ease Prediction

- 1 COW ONLY
- 2 FAIR CALVING EASE
- 3 GOOD CALVING EASE
- 4 OUTSTANDING CALVING EASE

THIS IS ONLY A PREDICTION BY DIAMOND D ANGUS. THIS IS NOT A GUARANTEE. THE SIRE PROVIDES ONLY 1/2 OF THE GENETICS INDETERMINING BIRTH WEIGHT.

## Cow/Calf Ratio

WE CALCULATE ADJUSTED WEAN EFFICIENCY FOR EACH COW/CALF PAIR. ADJUSTED WEAN EFFICIENCY IS COMPUTED AS THE RATIO OF THE CALF'S ADJUSTED 205 DAY WEIGHT TO THE COWS ADJUSTED WEIGHT. THE ADJUSTED COW WEIGHT IS ESTIMATED BY A PROCESS OF RATING EACH COW'S BODY CONDITION AND GIVING HER A SCORE. A SCORE OF "5" IS THE MEDIAN (NO ADJUSTMENT TAKEN), 80 POUNDS IS SUBTRACTED FROM HER WIGHT FOR A SCORE OF "6" AND 80 POUNDS IS ADDED TO HER WEIGHT FOR A SCORE OF "4". BY ADJUSTING COW WEIGHTS TO EQUAL BODY CONDITION SCORES, IT REWARDS COWS THAT PRODUCE A BIGGER CALF WHILE MAINTAINING HER OWN BODY CONDITION. ADJUSTED COW/CALF RATIO IS SHOWN FOR EACH SALE BULL IN THE CATALOG.

## Temperament & Udder Score

DIAMOND D ANGUS FEELS IT'S VERY IMPORTANT TO RECORD TEMPERAMENT AND UDDER SCORES. THERE ARE NO EPDS ON SOME OF THESE VERY IMPORTANT TRAITS. CONSIDERING THE SAFETY OF THE CREW AND THE EASE OF HANDLING THE CATTLE, WE FEEL IT'S WELL WORTH OUR TIME TO SCORE AND CULL THE ANIMALS THAT DON'T MEET THE STANDARDS WE HAVE SET. THE PERFORMANCE, EFFICIENCY, AND MEAT QUALITY WILL IMPROVE THE DOCILE CATTLE. THERE IS NO SUCH THING AS A PERFECT COW, AND YOU HAVE TO DECIDE WHICH TRAITS YOU WANT OR NEED. MANY YEARS AGO WE STARTED A PROGRAM OF KEEPING RECORDS ON THE TEMPERAMENT AND UDDER QUALITIES OF OUR FEMALES. WE SCORE THEM FROM 1-5 IN EACH CATEGORY. EACH OF OUR BULLS WAS GIVEN A SCORE FOR HIS DAM'S UDDER AT TIME OF BIRTH. THIS AND A SCORE FOR HIS TEMPERAMENT ARE LISTED WITH EACH BULL'S DATA.

TEMPERAMENT SCORE	UDDER SCORE
1 - CALM	1 - VERY GOOD
2 - SLIGHTLY RESTLESS, SHIFTING	2 - ABOVE AVERAGE
3 - SQUIRMING & OCCASIONALLY SHAKING THE SQUEEZE CHUTE	3 - AVERAGE
4 - CONTINUOUS VIGOROUS MOVEMENT	4 - CAPABLE OF RAISING A CALF
5 - BESERK, REARING & TWISTING	5 - A NON-FUNCTIONAL ANIMAL

# Referance Sires

## DDA Great Plains 57R

05/09/2015 REG: 18200982

N BAR EMULATION  
O C C GREAT PLAINS 943G  
DIXIE ERICA OF CH 1019

DDA EMBLAZON 27C  
DDA GALATEA 859  
DDA GALATEA 031

EMULATION N BAR 5522  
N BAR PRIMROSE 2424  
PBC 707 1M F0203  
DIXIE ERICA OF CH 615  
O C C EMBLAZON 854E  
D D A MELISA 824  
HIGH VALLEY 4C6 AMBUSH  
D D A GALATEA 423



DAM TO 57R

WE HAVE NO DOUBT ABOUT THE QUALITY OF DAUGHTERS THE DDA GREAT PLAINS 57R SONS WILL PRODUCE. OCC GREAT PLAINS 943G IS THE SIRE OF SOME OF THE BEST FEMALES IN THE WORLD. THE DDA GREAT PLAINS 57R HAS DIXIE ERICA OF CH 1019 IN BOTH SIDES OF HIS PEDIGREE. THE NUMBER OF OFFSPRING THAT IS PRODUCED IN A MULTI SIRE BREEDING GROUP IS ALSO A YARD STICK OF THE FERTILITY AND DRIVE THAT THIS GREAT BULL HAS. THE DDA GALATEA 859 WAS SOLD TO LOYNING ANGUS AND WYATT DEVRIES AND IN EMBRYO PRODUCTION. SHE IS A DIRECT DAUGHTER TO THE GREAT DDA GALATEA 031 WHO IS THE MOTHER OF DDA B&T 18K.

## DDA Bar Lad 177U

06/02/2017 REG: 19181254

SOUTHOLM BAR LAD 50D  
FAIRVIEW BAR LAD 4218  
MILLADY OF GRASSY LANES

BANJO OF WYE UMF 6413  
DDA HANA 940  
DIAMOND HENRETTA 368

SOUTHOLM BAR LAD 88Z  
PRIDE M OF SOUTHOLM 47V  
BAR LAD OF GRASSY LANES 70M  
MILLADY OF GRASSY LANES 70M  
LONESTAR OF WYE  
BLACKBIRD OF WYE UMF 5362  
DIAMOND MC HENRY 0113  
MISS DIAMOND CHANCE 065



LONGEVITY IN OUR HERD INDICATES MANY THINGS ABOUT AN ANIMAL. FIRST OF ALL ANY TIME AN ANIMAL GIVES PROBLEMS, SHE IS GONE. IF SHE LOSES A CALF SHE IS GONE. IF SHE HAS A RUNT CALF SHE IS GONE. IF SHE HAS FEET OR STRUCTURE PROBLEMS SHE IS GONE. IF SHE HAS UDDER OR TEMPERAMENT PROBLEMS, SHE IS GONE. IF SHE DOES NOT BREED BACK QUICKLY SHE IS GONE. SO WITH THAT SAID ANY TIME A COW IS OLD, AND STILL HERE, SHE HAS PASSED A RIGID TEST. WE HAVE IDENTIFIED THE MOTHER, THE GRAND MOTHER AND GREAT GRANDMOTHER AS A COW FAMILY THAT HAS PASSED THE RIGID TEST. WE SAVED SONS OF THE GREAT HANA 940, DDA BAR LAD 177U AND DDA ALLIANCE 142V. THE 177U WAS BORN WHEN THE 940 COW WAS 18 YEARS OLD AND THE 142V SHE WAS 19 YEARS OLD. CATTLE SELECTED FOR THE MOST IN ANYTHING TYPICALLY ARE THE MOST IN THAT TRAIT BECAUSE THEY WERE SELECTED FOR THE MOST. HOWEVER ANY TIME AN ANIMAL IS THE MOST IN ONE THING THEY HAVE LOST A VERY IMPORTANT TRAIT OR TRAITS IN ORDER TO BE THE MOST IN SOMETHING ELSE.



DAM TO 177U



DAM TO 45W



DAM TO 77U



**DDA Pondera 10U**

04/27/2017 REG: 19000258



SIRE TO 10U

LODGE OF WYE  
HYLAND BC 0668  
HYLAND BARBARA 0266

DDA B&T 18K  
DDA KERRY 519  
DDA KERRY 365

CAREER OF WYE  
LORENA OF WYE  
MISTIC OF VOLGA 2018  
BARBARA OF VOLGA 2094  
D D A BANJO 1101  
DDA GALATEA 031  
DDA LODGE E5H  
DDA KERRY 727

THE DDA PONDERA 10U IS A BULL THAT WAS SOLD AT OUR 2018 SALE AND WE HAD THE OPPORTUNITY OF BUYING HIM BACK. HE HAS GROWN INTO ONE OF MY FAVORITE HERD SIRES. HE HAS NEVER BEEN THE LARGEST OR THE PRETTIEST BULLS BUT HE ALWAYS SIRES CALVES IN OUR MULTI SIRE BREEDING GROUP. HIS SISTERS HAVE MADE SOME OF OUR FAVORITE COWS IN OUR HERD. THE GRAND SIRE LODGE OF WYE HAS PROVEN TO BE ONE OF THE BEST BULLS WYE ANGUS EVERY PRODUCED. HE WOULD BE ONE OF 12 BULLS EVER PROVEN TO BE 100 PERCENT GENETIC DEFECT FREE. YOU WILL NOTICE LODGE OF WYE IS ALSO ON MOTHERS SIDE OF PEDIGREE. THE MOTHER DDA KERRY 519 IS Sired BY DDA B&T 18K. HE ALSO IS A SIRE THAT HAS LEFT TREMENDOUS DAUGHTERS IN OUR HERD. THE 18K IS OUT OF THE SAME GREAT OLD COW AS OUR DDA GALATEA 859 COW. THEY BOTH HAVE LONGEVITY AND FUNCTION BRED IN TO THEM.

**DDA Carrolton 45W**

05/10/2019 REG: 19690200



SIRE TO 45W

PINEBANK WAIGROUP 152/04  
PINEBANK SE 10D  
PINEBANK WAIGROUP 92/99

O C C HAILTON 635H  
DDA GINNY 458  
D D A GINNY 604

PINEBANK WAIGROUP 45/02  
PINEBANK WAIGROUP 86/96  
PINEBANK WAIGROUP 41/97  
PINEBANK WAIG 84/95  
D H D TRAVELER 6807  
O C C JUANADA 856F  
D D A BARTOR  
D D A GINNY 401

IN 2014 I TRAVELED TO NEW ZELAND SO THAT I COULD VIEW TWO HERDS. THE PINEBANK AND RESURGAM ANGUS HERDS. BOTH HERDS HAVE BEEN 100 PERCENT FORAGE DEVELOPED FOR A VERY LONG TIME. I TOOK MANY PHOTOS OF CATTLE AND ENVIRONMENT. BILL HODGE OF SUSTAINABLE GENETICS, HAD ALSO BEEN TO THE PINEBANK HERD MANY YEARS BEFORE ME. BILL HAD IMPORTED EMBRYOS FROM THE PINEBANK HERD AND PUT THOSE EMBRYOS IN. AFTER TWO SONS HAD GOTTEN ABOUT 18 MONTHS OLD HE CALLED ME AND ASK IF I WOULD BE INTERESTED IN THESE SONS. I WAS HESITATE BECAUSE I SAID I WAS NOT FAMILIAR WITH THE COW THAT WAS FLUSHED. BILL NEEDED TO REMIND ME THAT YES, I WAS FAMILIAR WITH THE MOTHER TO HIS BULLS, BECAUSE I HAD SENT A PHOTO OF HER TO HIM AFTER MY TRIP. WHEN I SAW THIS PHOTO, I KNEW I WOULD NEED THESE TWO BULLS OUT OF A COW THAT HAD REACHED THE GRANNIE HERD OF THE PINEBANK ANGUS. IT WAS A PHOTO THAT I HAD TAKEN OF MY FAVORITE COW AT THE PINEBANK HERD. BOTH PINEBANK SE 9D AND 10D WERE BOTH OUT OF THIS GREAT COW. SHE WAS 17 YEARS OLD AT THE TIME I TOOK PHOTO. BILL HAD TAKEN A PHOTO OF THIS SAME COW WHEN SHE WAS ABOUT 7 YEARS OLD. WE ARE NOW USING A PINEBANK SE 10D SON. HIS NAME IS DDA CARROLTON 45W. HE IS THE 16TH CALF DDA GINNY 458 RAISED. GRANDMOTHER DDA GINNY 604 WAS ALSO A GOOD COW THAT WEANED 11 CALVES, SHE TRACES TO THE SAME COW FAMILY AS 177U AND 142V. WE NEVER MAKE EXCUSES FOR THEM THAT THEY DID NOT DO THERE JOB. SO BUY WITH CONFIDENCE THAT THE DDA CARROLTON 45W SONS WILL SIRE SOME OF YOUR FAVORITE DAUGHTERS THAT WILL STAY IN PRODUCTION FOR A VERY LONG TIME.

**DDA Great Plains 77U**

05/08/2017 REG: 19041484



N BAR EMULATION EXT  
O C C GREAT PLAINS 943G  
DIXIE ERICA OF CH 1019

LODGE OF WYE  
DDA MELISA E808  
D D A MELISA 824

EMULATION N BAR 5522  
N BAR PRIMROSE 2424  
PBC 707 1M F0203  
DIXIE ERICA OF CH 615  
CAREER OF WYE  
LORENA OF WYE  
SHOSHONE 130-657  
D D A MELISA 545

I AM NOT ABLE TO SAY ENOUGH GOOD ABOUT THIS GREAT PLAINS SON. HE IS AS CLOSE TO PERFECT PHENOTYPE AS A BULL CAN BE. PHENOMENALLY GOOD FEET AND AN UNBELIEVABLE ATHLETE. THE MOTHER BEING A FULL SISTER TO DDA LODGE E5H. SHE IS ALSO A BEAUTIFUL COW THAT WEANED 10 CALVES HERE AT DIAMOND D ANGUS. I HAVE TALKED ABOUT THE GOOD IN DDA MELISA 824, SO LET'S TALK ABOUT HER MOTHER, DDA MELISA 545 IS A COW THAT HOWREY ANGUS PURCHASED MANY YEARS AGO AND WAS A CORNERSTONE FOR HIS HERD. MONTE FLUSHED HERE MANY TIMES AND KEPT MANY DAUGHTERS. HE ALSO SOLD MANY SONS FORM HER, INCLUDING A SON WE BOUGHT MH MICK 53. PLEASE DO NOT PASS THESE DDA GREAT PLAINS 77U SONS UP. THE 77U ALSO WAS VERY ACTIVE THIS YEAR IN A MULTI SIRE BREEDING GROUP.

**1Z DDA Dupuyer Creek 1Z**

04/29/2022 REG: 20643899

O C C GREAT PLAINS 943G  
DDA GREAT PLAINS 57R  
DDA GALATEA 859

D D A FAHREN 21X  
DDA WENDY 839  
DDA WENDY 5123

N BAR EMULATION EXT  
DIXIE ERICA OF CH 1019  
DDA EMBLAZON 27C  
DDA GALATEA 031  
FAHREN OF WYE UMF 5830  
D D A MELISA 549  
DDA SURE ENOUGH 6D  
DDA WENDY 397

DUE TO THE FACT THAT 1Z HAS A 15 YEAR OLD DDA FAHREN 21X MOTHER AND Sired BY 57R, THERE IS NO DOUBT THE 1Z WILL SIRE SOME OF YOUR FAVORITE COWS. TAKE A LOOK AT HIS ULTRASOUND DATA.

	BW	WT.	WEAN RATIO	SC
	65	957	108	34
HIP HT.	CALVING EASE	TEMP.	UDDER	COW/CALF RATIO
49	3	1	1	49%

**2Z DDA Back To The Future 2Z**

04/29/2022 REG: 20644047

FAIRVIEW BAR LAD 4218  
DDA BAR LAD 177U  
DDA HANA 940

HYLAND BC 0668  
DDA SANDY  
DDA SANDY6131

SOUTHOLM BAR LAD 50D  
MILADY OF GRASSY LANES  
BANJO OF WYE UMF 6413  
DIAMOND HENRETTA 368  
LODGE OF WYE  
HYLAND BARBARA 0266  
RESURGAM BLU-PRINT T368  
DDA SANDY 2101

ANOTHER VERY GOOD MATERNAL PEDIGREE. DDA BAR LAD 177U IS SIRE TO THE MOST OFFSPRING FROM 2022. THIS IS A GOOD INDICATOR OF THE FERTILITY IN HIM. VERY FEW PEDIGREES IN THE BREED HAVE A NATURAL GRANDMOTHER THAT WAS BORN IN 1999, HER MOTHER DIAMOND HENRETTA 368 ALSO STAY IN PRODUCTION FOR A VERY LONG PERIOD OF TIME. THE 2Z HAS HYLAND BC 0668 MOTHER THAT IS 5 YEARS OLD AND CALVES NEAR THE BEGINNING EVERY YEAR.

	BW	WT.	WEAN RATIO	SC
	69	895	99	36
HIP HT.	CALVING EASE	TEMP.	UDDER	COW/CALF RATIO
48	3	1	1	48%

**BZ DDA Boss Hog 3Z**

04/29/2022 REG: 20644053

DDA MAGNUM 40M  
DDA BOSS 88U  
DDA MAY 059

RESURGAM BLU-PRINT T368  
DDA JODY 556  
DDA JODY 335

DDA B&T 18K  
DDA RENA 054  
SHOSHONE 130-6357  
D D A MAY 619  
RESURGAM BLU-PRINTP215  
WAIMATA K1147  
FAVOUR OF WYE  
D D A JODY 840

GRANDMOTHERS ON BOTH SIDES OF THIS GREAT PEDIGREE ARE COWS THAT STAYED IN PRODUCTION FOR A VERY LONG TIME. THE DDA MAY 059 IS A PATERNAL SISTER TO DDA MELISA 824, WHO IS ALSO THE MOTHER TO DDA EMBLAZON 27C AND DDA LODGE E5H. THE DDA MAY 059 STAYED IN PRODUCTION UNTIL SHE WAS 19 YEARS OLD. THE SIRE TO THIS GOOD CALF DDA BOSS 88U WAS THE LAST OF 17 CALVES THIS GREAT OLD COW HAD. YEARS AGO WE ALSO USED FAVOUR OF WYE. NO QUESTION THAT HE WOULD BE A BULL WE WOULD USE TODAY IF WE HAD THE ABILITY. THE DDA JODY 335 HAD 15 CALVES HERE AT DDA. IF YOU LIKE FUNCTION AND LONGEVITY TAKE A LOOK HERE.

	BW	WT.	WEAN RATIO	SC
	83	907	104	34
HIP HT.	CALVING EASE	TEMP.	UDDER	COW/CALF RATIO
47	3	1	1	45%

**4Z DDA Right On 4Z**

04/30/2022 REG: 20644063

DDA LODGE E5H  
DDA JUST RIGHT 30U  
DDA WENDY 546

PINEBANK SE 10D  
DDA ZELDA 951  
DDA ZELDA 492

LODGE OF WYE  
D D A MELISA 824  
FAIRVIEW JH CASCADE 2226  
DDA WENDY 839  
PINEBANK WAIGROUP 152/04  
PINEBANK WAIGROUP 92/99  
DDA B&T 18K  
DDA ZELDA 945

THE DDA LODGE E5H HAS LEFT OUTSTANDING DAUGHTER IN OUR HERD. SIRE TO HIS MOTHER DDA PINEBANK SE 10D IS ALSO A STRAIGHT PINEBANK SIRE THAT WE BOUGHT FROM BILL HODGE. IN MY OPINION VERY FEW WOULD NOW HAVE CATTLE BETTER THAN BILL. HE MANAGED THE WYE ANGUS HERD AT ONE POINT. I WOULD EXPECT A TOUCH MORE FRAME THAN AVERAGE WITH THE 4Z.

	BW	WT.	WEAN RATIO	SC
	74	1001	124	35
HIP HT.	CALVING EASE	TEMP.	UDDER	COW/CALF RATIO
49	3	1	1	70%



**5Z** DDA Back To The Future 5Z

05/01/2022 REG: 20644069

FAIRVIEW BAR LAD 4128  
**DDA BAR LAD 177U**  
DDA HANA 940  
  
DDA PINEBANK 50H  
**DDA SANDY 832**  
DDA SANDY 029  
  
SOUTHOLM BAR LAD 50D  
MILLADY OF GRALLY LANES  
BANJO OF WYE UMF 6413  
DIAMOND HENRETTA 368  
PINEBANK WAIGROUP 41/97  
MELISA 206 DDA  
DDA LODGE E5H  
DDA SANDY 731

ANOTHER GREAT PEDIGREE HERE. DDA BAR LAD 177U Sired the highest number of calves in this calving season. We are using the last two sons that the great DDA HANA 940 ever had. When a person thinks of function and longevity, the 940 cow comes to mind. You will find more function and longevity on mother's side. DDA PINEBANK 50H was sold to the Ole Farms many years ago. He sired some of the very top end cows and bulls at their ranch in Athabasca Alberta.

BW	WT.	WEAN RATIO	SC
78	795	97	34

HIP HT.	CALVING EASE	TEMP.	UDDER	COW/CALF RATIO
48	3	1	2	50%

**7Z** DDA Back To The Future 7Z

05/02/2022 REG: 20644086

FAIRVIEW BAR LAD 4218  
**DDA BAR LAD 177U**  
DDA HANA 940  
  
FAIRVIEW BAR LAD 4218  
**DDA MELISA 7155**  
DDA MELISA 308  
  
SOUTHOLM BAR LAD 50D  
MILLADY OF GRASSY LANES  
BANJO OF WYE UMF 6413  
DIAMOND HENRETTA 368  
SOUTHOLM BAR LAD 50D  
MILLADY OF GRASSY LANES  
HYLAND BC 0668  
DDA MELISA 179

THIS IS A HALF-BROTHER SISTER MATING BACK TO THE GREAT FAIR VIEW BAR LAD 4218. HE LEFT SOME OF OUR FAVORITE COWS IN OUR HERD. WHEN I SEE THE PEDIGREE AND KNOW WHAT THIS DDA BAR LAD 177U HAS DONE, I LIKE HIM MORE AND MORE EVERY TIME I LOOK AT HIM. IF YOU LIKE GOOD FUNCTIONAL FEMALES IT WOULD BE DIFFICULT TO WRONG HERE.

BW	WT.	WEAN RATIO	SC
69	975	105	36

HIP HT.	CALVING EASE	TEMP.	UDDER	COW/CALF RATIO
49	3	1	2	50%

**12Z** DDA Back To The Future 12Z

05/04/2022 REG: 20643877

FAIRVIEW BAR LAD 4218  
**DDA BAR LAD 177U**  
DDA HANA 940  
  
DDA GREAT PLAINS 57R  
**DDA GRETTA 931**  
DDA GRETTA 297  
  
SOUTHOLM BAR LAD 50D  
MILLADY OF GRASSY LANES  
BANJO OF WYE UMF 6413  
DIAMOND HENRETTA 368  
O C C GREAT PLAINS 943G  
DDA GALATEA 859  
HYLAND BC 0668  
DDA GRETTA 9116

ANOTHER GOOD DDA BAR LAD 177U SON, THAT IS OUT OF A DDA GREAT PLAINS 57R MOTHER. THESE 57R COWS ARE DOING A GREAT JOB.

BW	WT.	WEAN RATIO	SC
69	1013	112	35

HIP HT.	CALVING EASE	TEMP.	UDDER	COW/CALF RATIO
47	3	1	1	57%

**16Z** DDA Alliance 16Z

05/04/2022 REG: 20643893

H A R PINEBANK 443 202  
**DDA ALLIANCE 142V**  
DDA HANA 940  
  
PINEBANK SE 10D  
**DDA IRMA 025**  
DDA IRMA 5109  
  
PINEBANK WAIGROUP 41/97  
DDA STELLA 443  
BANJO OF WYE UMF 6413  
DIAMOND HENRETTA 368  
PINEBANK WAIGROUP 152/04  
PINEBANK WAIGROUP 92/99  
JAD FREMONT Z6306  
DDA IRMA 928

THE DDA ALLIANCE 142V IS A MATERNAL BROTHER TO OUR DDA BAR LAD 177U. THE MOTHER TO 142V WAS 19 YEARS OLD WHEN 142V WAS BORN. SHE WAS A GREAT COW AND SO WAS HER MOTHER WHO STAYED IN PRODUCTION UNTIL SHE WAS 22 YEARS OLD. PINEBANK SHOWS UP ON BOTH SIDES OF THIS GREAT PEDIGREE.

BW	WT.	WEAN RATIO	SC
74	1065	127	36

HIP HT.	CALVING EASE	TEMP.	UDDER	COW/CALF RATIO
49	3	1	1	73%

**9Z** DDA Surgeon 9Z

05/03/2022 REG: 20644099

HYLAND BC 0668  
**DDA PONDERA 10U**  
DDA KERRY 519  
  
D D A FAHREN 21X  
**DDA KERRY 865**  
DDA KERRY 424  
  
LODGE OF WYE  
HYLAND BARBARA 0266  
DDA B&T 18K  
DDA KERRY 365  
FAHREN OF WYE UMF 5830  
D D A MELISA 549  
O C C EMBLAZON 854E  
D D A KERRY 834

LOOKING AT THE DDA PONDERA 10U IS SOMETIMES DIFFICULT. HE HAS BEEN BEET UP NUMERUS TIMES AND STILL KEEPS SIRING GOOD CATTLE. THE MOTHER TO DDA SURGEON 9Z IS DDA KERRY 865 WAS 14 YEARS OLD WHEN SHE HAD 9Z. SHE IS ANOTHER GREAT DDA FAHREN 21X DAUGHTER. LIKE ALL FEMALES SHE HAS NEVER MISSED HAVING A CALF AND HAS HAD 13 CALVES.

BW	WT.	WEAN RATIO	SC
65	939	117	35

HIP HT.	CALVING EASE	TEMP.	UDDER	COW/CALF RATIO
48	3	1	1	56%

**11Z** DDA Right Up Front 11Z

05/04/2022 REG: 20754772

DDA LODGE E5H  
**DDA JUST RIGHT 89U**  
DDA ZELDA 674  
  
PINEBANK 64/10  
**DDA MELISA 830**  
DDA MELISA E703  
  
LODGE OF WYE  
D D A MELISA 824  
PINEBANK WAIGROUP 41/97  
ZELDA 234 DDA  
PINEBANK 39/08  
PINEBANK WAIGROUP 111/03  
LODGE OF WYE  
D D A MELISA 824

GRAND SIRE ON SIRE SIDE AND GRANDMOTHER ON DAM SIDE ARE FULL BROTHER AND SISTERS. GRANDMOTHER ON SIRE SIDE AND GRAND SIRE ARE PINEBANK BRED FROM NEW ZEALAND

BW	WT.	WEAN RATIO	SC
78	956	112	36

HIP HT.	CALVING EASE	TEMP.	UDDER	COW/CALF RATIO
49	3	1	1	61

**17Z** DDA Dupuyer Creek 17Z

05/05/2022 REG: 20643894

O C C GREAT PLAINS 943G  
**DDA GREAT PLAINS 57R**  
DDA GALATEA 859  
  
DDA LODGE E5H  
**DDA TINA 181**  
DDA TINA 906  
  
N BAR EMULATION EXT  
DIXIE ERICA OF C H 1019  
DDA EMBLAZON 27C  
DDA GALATEA 031  
LODGE OF WY  
D D A MELISA 824  
DDA FAHREN 5Z  
DDA TINA 692

I CAN NOT HELP BUT NOTICE THE GREAT ULTRASOUND SCAN DATA ON DDA DUPUYER CREEK 17Z. I ALSO SEE DDA MELIASA 824 IN THIS GREAT PEDIGREE MORE THAN ONCE. A PERSON WILL NOT GO WRONG WITH MATERNAL FUNCTION HERE.

BW	WT.	WEAN RATIO	SC
83	913	97	34

HIP HT.	CALVING EASE	TEMP.	UDDER	COW/CALF RATIO
47	3	1	1	42%

**18Z** DDA Boss Hog 18Z

05/05/2022 REG: 20643895

DDA MAGNUM 40M  
**DDA BOSS 88U**  
DDA MAY 059  
  
DDA ATHABASCA 59R  
**DDA KERRY 8145**  
DDA KERRY 6150  
  
DDA B&T 18K  
DDA RENA 054  
SHOSHONE 130-6357  
D D A MAY 619  
DDA PINEBANK 50H  
DDA GINNY 159  
JAD FREMONT Z6306  
DDA KERRY 1101

A PERSON CAN NOT HELP BUT TO LIKE THIS GREAT MATERNAL PEDIGREE. SOMEONE ONCE TOLD ME THAT DDA MAGNUM 40M WAS THE MOST COMPLETE BULL THEY HAD EVER SEEN. UNFORTUNATELY, WE LOST HIM AT A YOUNG AGE, DUE TO INJURY. DDA MAY 059 ON TOP SIDE AND DDA PINEBANK 59R AND 50H ON BOTTOM SIDE. ALSO BACK TO JAD FREMONT Z6306. YOU WILL WANT TO KEEP EVERY DAUGHTER THE DDA BOSS HOG 18Z EVER PRODUCES.

BW	WT.	WEAN RATIO	SC
83	945	105	34

HIP HT.	CALVING EASE	TEMP.	UDDER	COW/CALF RATIO
48	3	1	1	46%



**19Z** DDA Dupuyer Creek 19Z  
05/06/2022 REG: 20643898

**N BAR EMULATION EXT**  
O C C GREAT PLAINS 943G DIXIE ERICA OF C H 1019  
**DDA GREAT PLAINS 57R** DDA EMBLAZON 27C  
DDA GALATEA 859 DDA GALATEA 031  
EASTON OF LOOKOUT 83Z **ABANGOMERE ESTON**  
**DDA GINNA 767** FAIRMAC CUCHESS 72G  
DDA GINNA 273 D D A FAHREN 21X  
DDA GINNA 696

AFTER STUDYING THE PEDIGREE ON DDA DUPUYER CREEK 19Z, THERE IS NO DOUBT THAT HE WILL SIRE GREAT FUNCTIONAL MOTHER COWS THAT WILL STAY IN PRODUCTION FOR AN EXTENDED PERIOD OF TIME. HIS MOTHER IS A GREAT 6 YEAR OLD COW BACK TO A GOOD 21X DAUGHTER. HIS SIRE DDA GREAT PLAINS 57R HAS ALSO DONE A GREAT JOB FOR US.

BW	WT.	WEAN RATIO	SC
74	1066	114	36

HIP HT.	CALVING EASE	TEMP.	UDDER	COW/CALF RATIO
50	3	1	1	50%

**21Z** DDA Boss Hog 21Z  
05/09/2022 REG: 20643984

**DDA B&T 18K**  
DDA RENA 054  
SHOSHONE 130-6357  
D D A MAY 619  
O C C EMBLAZON 854E  
D D A MELISA 824  
HYLAND BC 0668  
DDA LANA 863

IF A PERSON WANTS GOOD COWS, IT IS NECESSARY TO BUY A BULL THAT HIS PEDIGREE IS LOADED WITH GOOD OLD PROVEN COWS. I SEE SHOSHONE 130, HYLAND BC 0668 MELISA 824, DDA MAY 059 DDA EMBLAZON 27C JUST TO MENTION A FEW.

BW	WT.	WEAN RATIO	SC
69	903	111	35

HIP HT.	CALVING EASE	TEMP.	UDDER	COW/CALF RATIO
47	3	1	1	49%

**26Z** DDA Dupuyer creek 26Z  
05/07/2022 REG: 20644030

**N BAR EMULATION EXT**  
O C C GREAT PLAINS 943G DIXIE ERICA OF C H 1019  
**DDA GREAT PLAINS 57R** DDA EMBLAZON 27C  
DDA GALATEA 859 DDA GALATEA 031  
EMULATION N BAR 5522  
DDA GINNY 552  
BANJO OF WYE UMF 6413  
DIAMOND HENRETTA 364

THE MOTHER TO THIS GREAT 57R SON, IS ON HER WAY TO FUNCTIONALITY AND LONGEVITY LIKE HER FAMILY. THE DDA HANA 940 IS ALSO THE MOTHER TO TWO OF OUR HERD SIRE. DDA BAR LAD 177U AND DDA ALLIANCE 142V. NO QUESTION THE DDA DUPUYER CREEK 26Z WILL SIRE GREAT FUNCTIONAL FEMALES.

BW	WT.	WEAN RATIO	SC
83	958	97	35

HIP HT.	CALVING EASE	TEMP.	UDDER	COW/CALF RATIO
49	3	1	1	48%

**29Z** DDA Surgeon 29Z  
05/10/2022 REG: 20644046

**LODGE OF WYE**  
HYLAND BARBARA 0266  
DDA B&T 18K  
DDA KERRY 365  
HYLAND BC 0668  
DDA ZELDA 067  
JAD FREMONT Z6306  
DDA GINNY 221

THE DDA SURGEON 29Z WILL SIRE SOME OF YOUR VERY FAVORITE COWS. HYLAND BC 0668 IS ON BOTH SIDES OF THIS GREAT PEDIGREE. DDA PONDERA 130N WAS OUR HIGH SELLING BULL MANY YEARS AGO. SOLD TO DENNIS YODER FROM INDIANA AND DAN FENELL ALSO FROM INDIANA. NO QUESTION ABOUT THE DRIVE THAT THE DDA PONDERA 10U DISPLAYS. HE SEEMS TO ALWAYS SIRE MANY CALVES AND LOOKS AS HE IS BEAT UP MOST OF THE TIME.

BW	WT.	WEAN RATIO	SC
69	780	102	33

HIP HT.	CALVING EASE	TEMP.	UDDER	COW/CALF RATIO
47	3	1	1	55%

**23Z** DDA Athabasca 23Z  
05/08/2022 REG: 20757800

**DDA ATHABASCA 59R**  
**DDA GONE FISHING 101W**  
DDA GALATEA 859  
PINEBANK SE 10D  
**DDA MELISA 042**  
DDA MELISA 852

PHENOTYPICALLY THE DDA GALATEA 859 WAS ONE OF THE MOST CORRECT COWS WE HAVE EVER RAISED. SHE WAS SOLD TO BEN LOYNING AND WYATT DEVRIES AND PUT IN A EMBRYO PROGRAM. SHE IS ALSO THE MOTHER TO DDA GREAT PLANES 57R. WE ALSO LIKE THE MOTHER TO DDA ATHABASCA 23Z. WE BOUGHT PINEBANK SE 10D AND PINEBANK SE 9D FROM BILL HODGE WHO MANAGED THE WYE HERD AND NOW THE OWNER OF SUSTAINABLE GENETICS.

BW	WT.	WEAN RATIO	SC
74	855	-	34

HIP HT.	CALVING EASE	TEMP.	UDDER	COW/CALF RATIO
48	3	1	1	-

**25Z** DDA Right Up Front 25Z  
05/08/2022 REG: 20655941

**SOUTHOLM BAR LAD 50D**  
MILLADY OF GRASSY LANES  
BANJO OF WYE UMF 6413  
DIAMOND HENRETTA 368  
O C C GREAT PLAINS 943G  
DDA GALATEA 859  
HYLAND BC 0668  
DDA GRETTA 9116

I SEE PINEBANK ON BOTH SIDES OF THIS PEDIGREE. THE DDA ZELDA 674 WAS MY FAVORITE PINEBANK 41/97 DAUGHTER. DDA MELISA E806 WAS A FULL SISTER TO OUR GREAT DDA EMBLAZON 27C BULL.

BW	WT.	WEAN RATIO	SC
78	890	97	33

HIP HT.	CALVING EASE	TEMP.	UDDER	COW/CALF RATIO
48	3	1	1	51%

**34Z** DDA Surgeon 34Z  
05/12/2022 REG: 20644050

**LODGE OF WYE**  
HYLAND BARBARA 0266  
DDA B&T 18K  
DDA KERRY 365  
EMULATION N BAR 5522  
DDA GINNY 552  
DDA LEDGER 76E  
DDA ZELDA 953

ANOTHER GREAT MATERNAL PEDIGREE WITH A SIRE OF DDA PONDERA 10U BACK TO A DDA EMULATION 30K DAUGHTER. HIS MOTHER IS 9 YEARS OLD, GRANDMOTHER HAS HAD 11 CALVES AND STILL GOING. SHE TRACES TO OUR 055, 791, 580 AND 368 COW FAMILY. THIS IS THE SAME COW FAMILY AS MOTHER TO DDA BAR LAD 177U AND DDA ALLIANCE 142V.

BW	WT.	WEAN RATIO	SC
78	901	111	34

HIP HT.	CALVING EASE	TEMP.	UDDER	COW/CALF RATIO
49	3	1	1	48%

**35Z** DDA Trouble Free 35Z  
05/12/2022 REG: 20644051

**N BAR EMULATION EXT**  
O C C GREAT PLAINS 943G DIXIE ERICA OF C H 1019  
**DDA GREAT PLAINS 77U** LODGE OF WYE  
DDA MELISA E808 D D A MELISA 824  
PINEBANK 64/10 PINEBANK 39/08  
**DDA SANDY 722** PINEBANK WAIGORUP 111/03  
DDA SANDY 2101 DDA EMBLAZON E41  
DDA SANDY E802

THE DDA GREAT PLAINS 77U MAY BE THE MOST PHENOTYPICALLY CORRECT BULLS THAT WE HAVE EVER RAISED. HE IS VERY MUCH AN ATHLETE. DO NOT LET THIS ONE PASS YOU UP. HE IS ALSO A DECEDENT OF OUR GREAT SANDY COW FAMILY

BW	WT.	WEAN RATIO	SC
78	915	102	35

HIP HT.	CALVING EASE	TEMP.	UDDER	COW/CALF RATIO
48	3	1	1	46%



37Z

DDA George 37Z

05/16/2022 REG: 20757801

PINEBANK SE 10D DDA CARROLTON 45W DDA GINNY 458
PINEBANK SE 10D DDA MADDIE 062 DDA MADDIE 605
PINEBANK WAIGROUP 152/04 PINEBANK WAIGROUP 92/99 O C C HAMILTON 635H D D A GINNY 604
PINEBANK WAIGROUP 152/04 PINEBANK WAIGROUP 92/99 H A R PINEBANK 443 202 DDA MADDIE 303

THE DDA CARROLTON 45W WAS THE 16TH CALF THAT DDA GINNY 458 HAD. I SEE THIS IS A HALF-BROTHER SISTER MATING OF THE PINEBANK SE 10D. ALSO THE GRANDMOTHER IS A 202 SON. IF YOU WOULD LIKE A PEDIGREE THAT HAS PINEBANK IN IT HERE YOU GO.

Table with 4 columns: BW, WT., WEAN RATIO, SC. Values: 65, 870, -, 34

Table with 5 columns: HIP HT., CALVING EASE, TEMP., UDDER, COW/CALF RATIO. Values: 47, 3, 1, 1, -

39Z

DDA George 39Z

05/16/2022 REG: 20644052

PINEBANK SE 10D DDA CARROLTON 45W DDA GINNY 458
DDA BLUE PRINT 29R DDA SANDY 012 DDA SANDY 626
PINEBANK WAIGROUP 152/04 PINEBANK WAIGROUP 92/99 O C C HAMILTON 635H D D A GINNY 604
RESURGAM BLU-PRINT T368 DDA SANDY 931 H A R PINEBANK 443 202 DDA SANDY 430

HERE IS ANOTHER GOOD DDA CAROLTON 45W SON OUT OF A DDA BLUE PRINT 29R DAUGHTER BACK TO A 202 GRANDMOTHER. ANOTHER GREAT MATERNAL PEDIGREE.

Table with 4 columns: BW, WT., WEAN RATIO, SC. Values: 74, 940, 119, 36

Table with 5 columns: HIP HT., CALVING EASE, TEMP., UDDER, COW/CALF RATIO. Values: 48, 3, 1, 1, 64%

42Z

DDA George 42Z

05/16/2022 REG: 20644056

PINEBANK SE 10D DDA CARROLTON 45W DDA GINNY 458
PINEBANK SE 10D DDA GRETTA 093 DDA GRETTA 930
PINEBANK WAIGROUP 152/04 PINEBANK WAIGROUP 92/99 O C C HAMILTON 635H D D A GINNY 604
PINEBANK WAIGROUP 152/04 PINEBANK WAIGROUP 92/99 D D A BANJO 1101 DDA GRETTA 6114

THE DDA GEORGE 42Z IS A RESULT OF HALF BROTHER AND SISTER MATING OF PINEBANK SE 10D. THE DDA GINNY 458 WAS ONE OF THOSE COWS THAT WAS TROUBLE FREE AND STAYED IN PRODUCTION COWS. SHE HAD 16 CALVES HERE AND THE 45W WAS HER LAST CALF. THE VALUE IN USING SONS FROM THE OLD COWS IS NOT MEASURABLE. HOWEVER I DO KNOW IF YOU WOULD LIKE TO RAISE TROUBLE FREE LONG LASTING COWS THAT STAY IN PRODUCTION FOR A LONG TIME, IT IS NECESSARY TO BUY YOUR BULLS FROM A BREEDER THAT USES AND HAS PROVEN THEIR CATTLE ARE JUST THAT.

Table with 4 columns: BW, WT., WEAN RATIO, SC. Values: 65, 770, 99, 32

Table with 5 columns: HIP HT., CALVING EASE, TEMP., UDDER, COW/CALF RATIO. Values: 46, 3, 1, 1, 57%

43Z

DDA Boss Hog 34Z

05/15/2022 REG: 20644057

DDA MAGNUM 40M DDA BOSS 88U DDA MAY 059
JAD FREMONT Z6306 DDA HOLLY 8107 DDA HOLLY 2109
DDA B&T 18K DDA RENA 054 SHOSHONE 130-6357 D D A MAY 619
JAD EX T3199 SHOSHONE FRANCES 6306 HYLAND BC 0668 DDA HOLLY 664

DDA BOS HOG 43Z HAS A MOTHER THAT HAS DONE HER JOB FOR MANY YEARS. SHE IS A PATERNAL SISTER TO DDA MELISA 824 WHO IS MOTHER TO DDA EMBLAZON 27C AND DDA LODGE E5H. THIS BULL HAS ANOTHER GOOD JAD FREMONT Z6306 DAUGHTER OUT OF A HYLAND BC 0668 GRANDMOTHER. HIS MOTHER HAD HER 4TH CALF, GRANDMOTHER IS NURSING HER 9TH CALF AND GREAT GRANDMOTHER HAD 10 CALVES.

Table with 4 columns: BW, WT., WEAN RATIO, SC. Values: 78, 865, 99, 33

Table with 5 columns: HIP HT., CALVING EASE, TEMP., UDDER, COW/CALF RATIO. Values: 48, 3, 1, 1, 57%

40Z

DDA Alberta 40Z

05/16/2022 REG: 20644054

DDA ATHABASCA 59R DDA GONE FISHING 101W DDA GALATEA 859
PINEBANK SE 9D DDA GINNY 031 DDA GINNY 221
DDA PINEBANK 50H DDA GINNY 159 DDA EMBLAZON 27C DDA GALATEA 031
PINEBANK 1/06 PINEBANK WAIGROUP 92/99 DDA B&T 18K DDA GINNY 038

ON THE SIRE SIDE IS A GREAT DDA GALATEA 859 WHO IS ALSO THE MOTHER OF OUR DDA GREAT PLANES 57R. SHE IS A BEAUTIFUL COW SOLD TO WYATT DeVRIES AND BEN LOYNING AND THEY ARE COLLECTING EMBRYOS ON HER. ON MOTHERS SIDE IS A YOUNG PINEBANK SE 9D DAUGHTER THAT WILL MAKE A GREAT COW.

Table with 4 columns: BW, WT., WEAN RATIO, SC. Values: 78, 877, 105, 34

Table with 5 columns: HIP HT., CALVING EASE, TEMP., UDDER, COW/CALF RATIO. Values: 48, 3, 1, 1, 62%

41Z

DDA Alberta 41Z

05/15/2022 REG: 20644055

DDA ATHABASCA 59R DDA GONE FISHING 101W DDA GALATEA 859
DDA BLUE PRINT 29R DDA SANDY 077 DDA SANDY 522
DDA PINEBANK 50H DDA GINNY 159 DDA EMBLAZON 27C DDA GALATEA 031
RESURGAM BLU-PRINT T368 DDA SANDY 931 JAD FREMONT Z6306 DDA SANDY 311

HERE IS ANOTHER GOOD DDA GONE FISHING 101W SON. PLEASE LOOK AT COMMENTS ON 101W ON BULL 39Z. THE DDA SANDY 077 IS A GOOD DDA BLUE PRINT 29R DAUGHTER BACK TO A JAD FREMONT Z6306 DAUGHTER.

Table with 4 columns: BW, WT., WEAN RATIO, SC. Values: 78, 835, 115, 34

Table with 5 columns: HIP HT., CALVING EASE, TEMP., UDDER, COW/CALF RATIO. Values: 47, 3, 1, 1, 79%

45Z

DDA Trouble Free 45Z

05/15/2022 REG: 20644059

O C C GREAT PLAINS 943G DDA GREAT PLAINS 77U DDA MELISA E808
JAD FREMONT Z6306 DDA GRETTA 976 DDA GRETTA 009
N BAR EMULATION EXT DIXIE ERICA OF C H 1019 LODGE OF WYE D D A MELISA 824
JAD EX T3199 SHOSHONE FRANCES 6306 HYLAND BC 0668 DDA GRETTA 848

ONE OF THE MANY REASONS WE DECIDED TO USE DDA LODGE E5H AS HEAVY AS WE HAVE IS BECAUSE OF DDA GREAT PLAINS 77U MOTHER. SHE WAS A FLAWLESS COW THAT STAYED IN PRODUCTION FOR A VERY LONG TIME. HER MOTHER IS OUR DDA MELISA 824. THE DDA GREAT PLAINS 77U IS ONE OF THE MOST PHENOTYPICALLY CORRECT BULLS WE HAVE EVER RAISED. THE MOTHER TO THIS BULL IS A YOUNG COW, HOWEVER DDA GRETTA 009 HAD 9 CALVES.

Table with 4 columns: BW, WT., WEAN RATIO, SC. Values: 74, 928, 115, 35

Table with 5 columns: HIP HT., CALVING EASE, TEMP., UDDER, COW/CALF RATIO. Values: 48, 3, 1, 1, 63%

47Z

DDA Commercial 47Z

05/16/2022 REG: COMMERCIAL

FAIRVIEW BAR LAD 4218 DDA BAR LAD 177U DDA HANA 940
SOUTHOLM BAR LAD 50D MILLADY OF GRASSY LANES BANJO OF WYE UMF 6413 DIAMOND HENRETTA 368

DDA COMMERCIAL

IF LIBIDO IS AN INDICATOR OF FERTILITY THE DDA BACK TO THE FUTURE 47Z SHOULD HAVE A TON OF IT. HIS SIRE DDA BAR LAD 177U HAS Sired THE MOST OFFSPRING IN OUR MULTI SIRE BREEDING GROUP. TO ME THIS IS A GOOD INDICATOR OF SOME VERY IMPORTANT TRAITS FOR A BULL TO SIRE GOOD FUNCTIONAL FEMALES. ANOTHER THING THAT I NOTICED ABOUT THIS PEDIGREE IS DDA BANJO E2B IS A FULL BROTHER TO DDA HANA 940. SHE WAS A COW THAT STAYED IN PRODUCTION UNTIL SHE WAS 19 YEARS OLD AND HER MOTHER 22 YEARS. NO TRANSFER OF PAPERS.

Table with 4 columns: BW, WT., WEAN RATIO, SC. Values: 69, 789, 97, 34

Table with 5 columns: HIP HT., CALVING EASE, TEMP., UDDER, COW/CALF RATIO. Values: 47, 3, 1, 1, 58%



**48Z** DDA Back To The Future 48Z  
 05/16/2022 REG: 20644061

FAIRVIEW BAR LAD 4218 **SOUTHOLM BAR LAD 50D**  
**DDA BAR LAD 177U** MILLADY OF GRASSY LANES  
 DDA HANA 940 BANJO OF WYE UMF 6413  
 DIAMOND HENRETTA 368  
 COLE CREEK CEDAR RIDGE 1V **COLE CREEK BLACK CEDAR 46P**  
**DDA WENDY 332** COLE CREEK CLOVANADA 49S  
 DDA WENDY 090 DDA EMBLAZON E41  
 DDA WENDY 505

ANOTHER GOOD PERFORMING DDA BAR LAD 177U SON. DDA WENDY 332 MOTHER STAYED IN PRODUCTION UNTIL SHE WAS 10 YEARS OLD. THE DDA EMBLAZON E41 IS A FULL BROTHER TO DDA EMBLAZON 27C. THE ONLY DIFFERENCE IS THAT WE DID NOT USE THE DDA EMBLAZON E41 AS MUCH.

BW	WT.	WEAN RATIO	SC
83	947	108	37

HIP HT.	CALVING EASE	TEMP.	UDDER	COW/CALF RATIO
48	3	1	2	54%

**49Z** DDA Back To The Future 49Z  
 05/16/2022 REG: 20644062

FAIRVIEW BAR LAD 4218 **SOUTHOLM BAR LAD 50D**  
**DDA BAR LAD 177U** MILLADY OF GRASSY LANES  
 DDA HANA 940 BANJO OF WYE UMF 6413  
 DIAMOND HENRETTA 368  
 DDA FREMAN 80R **DDA EMBLAZON 27C**  
**DDA GINNY 883** DDA MELISA E703  
 DDA GINNY 2132 DDA LODGE E5H  
 DDA GINNY 917

DDA GINNY 883 IS A VERY LINE BRED COW DDA EMBLAZON27C, DDA MELISA E703 AND DDA LODGE E5H ARE ALL SONS AND DAUGHTERS OF OUR GREAT DDA MELISA 824. DDA BACK TO THE FUTURE 49Z HAS A TON OF FUNCTION AND LONGEVITY. IT IS CLEAR THAT THIS BULL WILL SIRE GREAT DAUGHTERS, THERE IS NO OTHER OPTIONS.

BW	WT.	WEAN RATIO	SC
74	965	105	35

HIP HT.	CALVING EASE	TEMP.	UDDER	COW/CALF RATIO
49	3	1	1	51%

**52Z** DDA Dupuyer Creek 52Z  
 05/16/2022 REG: 20644064

O C C GREAT PLAINS 943G **N BAR EMULATION EXT**  
**DDA GREAT PLAINS 57R** DIXIE ERICA OF C H 1019  
 DDA GALATEA 859 DDA EMBLAZON 27C  
 DDA GALATEA 031  
 DDA FAHREN 21X **FAHREN OF WYE UMF 5830**  
**DDA IRMA 453** D D A MELISA 549  
 DDA IRMA 928 SHOSHONE 130-6357  
 D D A IRMA 629

IF YOU LIKE FUNCTION AND LONGEVITY YOU WILL LOVE DDA DUPUYER CREEK 52Z. HIS MOTHER IS NURSING HER 7TH CALF. THE DDA IRMA 928 HAD 17 CALVES HERE AND SHE IS A PATERNAL SISTER OF DDA MELISA 824 . ON SIRE SIDE IS AGAIN THE DDA MELISA 824. WE LOVE THE DDA GREAT PLAINS 57R DAUGHTERS.

BW	WT.	WEAN RATIO	SC
78	905	101	34

HIP HT.	CALVING EASE	TEMP.	UDDER	COW/CALF RATIO
48	3	1	1	54%

**53Z** DDA Right Up Front 53Z  
 05/17/2022 REG: 20754779

DDA LODGE E5H **LODGE OF WYE**  
**DDA JUST RIGHT 89U** D D A MELISA 824  
 DDA ZELDA 674 PINEBANK WAIGROUP 41/97  
 ZELDA 234 DDA  
 DDA LODGE E5H **LODGE OF WYE**  
**DDA GALATEA 249** D D A MELISA 824  
 DDA GALATEA 897 HYLAND BC 0668  
 DDA GALATEA 643

THE DDA RIGHT UP FRONT 53Z IS ANOTHER HALF-BROTHER SISTER MATING TO THE GREAT DDA LODGE E5H. ON BOTTOM SIDE OF PEDIGREE, I SEE THE GRANDMOTHER DDA GALATEA 897 IS ALSO A LODGE OF WYE GRANDDAUGHTER. MOTHER TO THIS GOOD BULL HAS HAD 9 CALVES.

BW	WT.	WEAN RATIO	SC
83	831	93	34

HIP HT.	CALVING EASE	TEMP.	UDDER	COW/CALF RATIO
46	2	1	1	43%



**GREAT DAM TO 51Z**  
**DDA HOLLY 918**

**51Z** DDA Surgeon 51Z  
 05/16/2022 REG: 20754778

HYLAND BC 0668 **LODGE OF WYE**  
**DDA PONDERA 10U** HYLAND BARBARA 0266  
 DDA KERRY 519 DDA B&T 18K  
 D D A BANJO 1101 DDA KERRY 365  
**DDA HOLLY 102** BANJO OF WYE UMF 6413  
 DDA HOLLY 918 MISS DIAMOND JUMBO 587  
 DDA FAHREN 5Z  
 DDA HOLLY 780

I LOVE THIS PEDIGREE. THE SIRE DDA PONDERA 10U IS A BREEDING MACHINE. MOTHER TO DDA SURGEON 21Z HAD HER 12TH CALF HERE AND SHE HAS HAD ONE SET OF TWINS. HER MOTHER HAS ALSO HAD 12 CALVES AS OF THIS SPRING. THE SIRE OF THE DAM IS A FULL BROTHER TO OUR DDA SANDY 404 WHO STAYED HERE FOR MANY YEARS AND WENT ON TO BE A DONOR COW FOR WILSON AND BRANDON OVERDORFF. SHE STAYED IN PRODUCTION UNTIL I BELIEVE 23 YEARS OLD.

BW	WT.	WEAN RATIO	SC
78	841	97	34

HIP HT.	CALVING EASE	TEMP.	UDDER	COW/CALF RATIO
47	3	1	2	43%

**54Z** DDA Trouble Free 54Z  
 05/17/2022 REG: 20644065

O C C GREAT PLAINS 943G **N BAR EMULATION EXT**  
**DDA GREAT PLAINS 77U** DIXIE ERICA OF C H 1019  
 DDA MELISA E808 LODGE OF WYE  
 D D A MELISA 824  
 PINEBANK SE 10D **PINEBANK WAIGROUP 152/04**  
**DDA JODY 992** PINEBANK WAIBROUP 92/99  
 DDA JODY 566 RESURAM BLU-PRINT T268  
 DDA JODY 335

I CAN NOT SAY THIS TOO MANY TIMES. THE DDA GREAT PLAINS 77U IS AS CORRECT OF BULL AS WE HAVE EVER RISEN. THE DDA TROUBLE FREE 54Z IS FROM THE GREAT JODY COW FAMILY. DDA JODY 335 WHO WEANED 15 CALVES HERE AT DIAMOND D ANGUS.

BW	WT.	WEAN RATIO	SC
74	929	104	34

HIP HT.	CALVING EASE	TEMP.	UDDER	COW/CALF RATIO
47	3	1	1	58%

**55Z** DDA Dupuyer Creek 55Z  
 05/17/2022 REG: 20644066

O C C GREAT PLAINS 943G **N BAR EMULATION EXT**  
**DDA GREAT PLAINS 57R** DIXIE ERICA OF C H 1019  
 DDA GALATEA 859 DDA EMBLAZON 27C  
 DDA GALATEA 031  
 DDA B&T 18K **D D A BANJO 1101**  
**DDA ZELDA 550** DDA GALATEA 031  
 DDA ZELDA 193 HYLAND BC 0668  
 DDA ZELDA 736

THE DDA DUPUYER CREEK 55Z HAS A SIRE THAT HAS DONE A TERRIFIC JOB FOR US. THE MOTHER OF 57R DDA GALATEA 859 WAS ONE OF THOSE FLAWLESS BEAUTIFUL COWS THAT DID EVERYTHING WE ASK HER TO DO. SHE IS NOW IN A DONOR PROGRAM FOR BEN LOYNING AND WYATT DEVERISE. AFTER STUDYING THIS GREAT PEDIGREE, I CANNOT HELP BUT TO NOTICE THE GREAT DDA GALATEA 031 SHOWS UP TWICE. SHE IS THE 859 AND DDA B&T 18K MOTHER. SHE WAS A GREAT COW AND WEANED 15 CALVES HERE.

BW	WT.	WEAN RATIO	SC
83	1051	112	35

HIP HT.	CALVING EASE	TEMP.	UDDER	COW/CALF RATIO
49	3	1	1	46%



56Z

DDA George 56Z

05/17/2022 REG: 20644067

PINEBANK SE 10D DDA CARROLTON 45W DDA GINNY 458
PINEBANK WAIGROUP 152/04 PINEBANKE WAIGROUP 92/99 O C C HAMILTON 635H D D A GINNY 604
DDA JUST RIGHT 30U DDA SANDY 015 DDA SANDY 804
DDA LODGE E5H DDA WENDY 546 DDA BLUE PRINT 29R DDA SANDY 5121

HERE IS ANOTHER GOOD SON OF DDA CARROLTON 45W. KEEP AN EYE ON THE 45W, HE IS A YOUNG BULL THAT I PREDICT WILL BE ONE OF THE GOOD BULLS THAT ARE BRED HERE AT DIAMOND D ANGUS.

Table with 4 columns: BW, WT., WEAN RATIO, SC. Values: 78, 857, 107, 33

Table with 5 columns: HIP HT., CALVING EASE, TEMP., UDDER, COW/CALF RATIO. Values: 49, 3, 1, 2, 61%

57Z

DDA George 57Z

05/17/2022 REG: 20644068

PINEBANK SE 10D DDA CARROLTON 45W DDA GINNY 458
PINEBANK WAIGROUP 152/04 PINEBANK WAIGROUP 92/99 O C C HAMILTON 635H D D A GINNY 604
RESURGAM BLU-PRINT T368 DDA SANDY 931 D D A FAHREN 21X DDA ZELDA E702

THE DDA GEORGE 57Z IS ANOTHER GOOD 45W SON. THE DDA ZELDA E702 GAVE UP LAST WINTER IN A SNOW STORM AFTER LEAVING US WITH 14 OFFSPRING.

Table with 4 columns: BW, WT., WEAN RATIO, SC. Values: 78, 900, 109, 34

Table with 5 columns: HIP HT., CALVING EASE, TEMP., UDDER, COW/CALF RATIO. Values: 48, 3, 1, 1, 71%

63Z

DDA George 63Z

05/19/2022 REG: 20644072

PINEBANK SE 10D DDA CARROLTON 45W DDA GINNY 458
PINEBANK WAIGROUP 152/04 PINEBANK WAIGROUP 92/99 O C C HAMILTON 635H D D A GINNY 604
DDA GREAT PLAINS 77U DDA ZELDA 014 DDA ZELDA 836
O C C GREAT PLAINS 945G DDA MELISA E808 DDA LODGE E5H DDA ZELDA 145

WRITING THESE NOTES GIVE ME AN OPPORTUNITY TO STUDY PEDIGREES THAT WE WILL SELL. IN MOST CASES YOU WILL FIND MANY GOOD COWS IN THESE PEDIGREES. THE DDA GEORGE 63Z IS NO EXCEPTION. I HAVE EXPRESSED THE GOOD IN THESE 45W SONS. ALSO IN THIS PEDIGREE I CANNOT HELP BUT NOTICE. DDA MELISA E808 AND DDA LODGE E5H. THEY ARE FULL BROTHER AND SISTERS BACK TO LODGE OF WYE AND DDA MELISA 824.

Table with 4 columns: BW, WT., WEAN RATIO, SC. Values: 69, 835, 97, 33

Table with 5 columns: HIP HT., CALVING EASE, TEMP., UDDER, COW/CALF RATIO. Values: 46, 2, 1, 1, 55%

65Z

DDA Right On 65Z

05/20/2022 REG: 20644074

DDA LODGE E5H DDA JUST RIGHT 30U DDA WENDY 546
PINEBANK WAIGROUP 14/02 DDA SANDY 718 DDA SANDY E801
LODGE OF WYE D D A MELISA 824 FAIRVIEW JH CASCADE 2226 DDA WENDY 839
PINEBANK WAIGROUP 4/00 PINEBANK WAIGROUP 86/96 FAVOR OF WYE D D A SANDY 404

THE DDA RIGHT ON 65Z IS ANOTHER EXAMPLE OF MANY GREAT COWS IN THIS PEDIGREE. THE DDA SANDY E801 LEFT 11 GOOD OFFSPRING IN OUR HERD. THEN HER MOTHER IS DDA SANDY 404 SOLD TO AARON WILSON AND BRANDON OVERDORFF AS A DONOR COW. SHE WEANED MANY GOOD CALVES HERE AND THEN STAYED IN EMBRYO PRODUCTION UNTIL SHE WAS 22 YEARS OLD.

Table with 4 columns: BW, WT., WEAN RATIO, SC. Values: 83, 929, 105, 35

Table with 5 columns: HIP HT., CALVING EASE, TEMP., UDDER, COW/CALF RATIO. Values: 47, 3, 1, 1, 53%

59Z

DDA Alliance 59Z

05/12/2022 REG: 20770947

H A R PINEBANK 443 202 DDA ALLIANCE 142V DDA HANA 940
PINEBANK SE 10D DDA GINNY 081 DDA GINNY 7152
PINEBANK WAIGROUP 41/97 DDA STELLA 443 BANJO OF WYE UMF 6413 DIAMOND HENRETTA 368
PINEBANK WAIGROUP 152/04 PINEBANK WAIGROUP 92/99 JAD FREMONT Z6306 DDA GINNY 2132

THE SIRE TO DDA ALLIANCE 59Z IS ONE OF THESE BULLS THAT ARE HARD TO MISS IN OUR HERD BULL PEN. KNOWING THAT HIS SIRE IS 142V A PERSON CANNOT HELP BUT LIKE HIM. THE DDA HANA 940 WAS 19 YEARS OLD WHEN SHE HAD HIM. TO NO BIG SURPRISE THE 940 COW WAS THE LAST CALF THAT DIAMOND HENRIETTA 368 HAD AT 20 YEARS OLD. HIS MOTHER IS A PATERNAL SISTER TO DDA CARROLTON 45W. I CANNOT HELP BUT NOTICE OUTSTANDING SCAN DATA ALSO.

Table with 4 columns: BW, WT., WEAN RATIO, SC. Values: 65, 864, -, 34

Table with 5 columns: HIP HT., CALVING EASE, TEMP., UDDER, COW/CALF RATIO. Values: 47, 3, 1, 1, -

61Z

DDA Alberta 61Z

05/19/2022 REG: 20644070

DDA ATHABASCA 59R DDA GONE FISHING 101W DDA GALATEA 859
DDA GREAT PLAINS 57R DDA MELISSA 075 DDA MELISSA 3131
DDA PINEBANK 50H DDA GINNY 159 DDA EMBLAZON 27C DDA GALATEA 031
O C C GREAT PLAINS 943G DDA GALATEA 859 DDA EMULATION 30K DDA MELISSA 121

WE HAVE USED TWO HERD SIRES OUT OF DDA GALATEA 859, DDA GREAT PLAINS 57R IS ONE AND DDA GONE FISHING 101W IS THE OTHER. JUST AN EXAMPLE OF THE GOODNESS IN THE 859 COW. ONE OF THESE SIRES ARE ON TOP SIDE OF PEDIGREE AND THE OTHER IS ON THE BOTTOM SIDE. THE OCC DIXIE ERICA OF 1019 IS ALSO DOUBLE UP. IN ORDER FOR A BULL TO SIRE GOOD FEMALES, A PERSON NEEDS TO STACK GOOD COWS IN PEDIGREE. THE MORE GOOD COWS THAT SHOW UP, THE MORE CHANCE THE BULL WILL SIRE GOOD FEMALES.

Table with 4 columns: BW, WT., WEAN RATIO, SC. Values: 74, 880, 97, 35

Table with 5 columns: HIP HT., CALVING EASE, TEMP., UDDER, COW/CALF RATIO. Values: 47, 3, 1, 1, 65%

67Z

DDA Back To The Future 67Z

05/20/2022 REG: 20644076

FAIRVIEW BAR LAD 4218 DDA BAR LAD 177U DDA HANA 940
DDA B&T 18K DDA HOLLY 6149 DDA HOLLY 2109
SOUTHOLM BAR LAD 50D MILLADY OF GRASSY LANES BANJO OF WYE UMF 6413 DIAMOND HENRETTA 368
D D A BANJO 1101 DDA GALATEA 031 HYLAND BC 0668 DDA HOLLY 664

THE MOTHER TO DDA BACK TO THE FUTURE 67Z IS NURSING HER 6TH CALF. GRANDMOTHER ON SIRE SIDE HAS HAD 9 CALVES WHILE GREAT GRANDMOTHER HAS HAD 1. THIS IS ONLY ON THE VERY BOTTOM OF PEDIGREE. THE DDA GALATEA 031 IS ALSO THE MOTHER TO DDA GALATEA 859, SHE HAD 15 CALVES. THEN IF YOU LOOK ON SIRE SIDE. THE DDA HANA 940 AND HER MOTHER DIAMOND HENRETTA 368 ARE THERE. BOTH COWS STAYED IN PRODUCTION BEYOND 19 YEARS.

Table with 4 columns: BW, WT., WEAN RATIO, SC. Values: 69, 968, 102, 36

Table with 5 columns: HIP HT., CALVING EASE, TEMP., UDDER, COW/CALF RATIO. Values: 49, 3, 1, 1, 46%

69Z

DDA Back To The Future 69Z

05/20/2022 REG: 20644076

FAIRVIEW BAR LAD 4218 MILLADY OF GRASSY LANES DDA BAR LAD 177U DDA HANA 940
DDA B&T 18K DDA HOLLY 6149 DDA HOLLY 2109
SOUTHOLM BAR LAD 50D MILLADY OF GRASSY LANES BANJO OF WYE UMF 6413 DIAMOND HENRETTA 368
D D A BANJO 1101 DDA GALATEA 031 HYLAND BC 0668 DDA HOLLY 664

THE FUNCTION AND LONGEVITY SEEMS TO BE CONSISTENTLY THERE WHEN A PERSON SELECTS FOR IT. WE TALKED ABOUT THE GOOD IN THE DDA BAR LAD 177U MANY TIMES. SO LETS HIT ON THE MOTHERS SIDE. I SEE BOTH DDA LODGE E5H AND DDA EMBLAZON 27C BOTH BULLS ARE SONS OF DDA MELISA 824, WHO STAYED IN PRODUCTION UNTIL SHE WAS 22 YEARS OLD. THE DDA BACK TO THE FUTURE 69Z IS THE 9TH CALF THAT THE 3142 HAS PRODUCED. THE MOTHER TRACES TO OUR 860, 580 AND 368 COW FAMILY. THIS IS THE SAME 368 THAT WOULD BE IN THE TOP OF PEDIGREE.

Table with 4 columns: BW, WT., WEAN RATIO, SC. Values: 78, 996, 108, 35

Table with 5 columns: HIP HT., CALVING EASE, TEMP., UDDER, COW/CALF RATIO. Values: 49, 3, 2, 1, 50%



**70Z** DDA *Back To The Future* 70Z

05/20/2022 REG: 20754780

FAIRVIEW BAR LAD 4218  
**DDA BAR LAD 177U**  
 DDA HANA 940

DDA VIPER 74T  
**DDA TINA 923**  
 DDA TINA 181

SOUTHOLM BAR LAD 50D  
 MILLADY OF GRASSY LANES  
 BANJO OF WYE UMF 6413  
 DIAMOND HENRETTA 368

**DDA FAHREN 58F**  
**DDA GALATEA 1100**  
**DDA LDOGE E5H**  
**DDA TINA 906**

THE DDA BACK TO THE FUTURE 70Z IS ANOTHER GOOD PERFORMING DDA BAR LAD 177U SON. DDA BACK TO THE FUTURE 70Z MOTHER DDA TINA 923 IS A GOOD YOUNG COW. THE DDA TINA 181 HAS HAD 10 CALVES HERE. GRAND SIRE TO DAM DDA FAHREN 58F WAS A BEAUTIFUL FAHREN OF WYE SON THAT OAK LANE BOUGHT MANY YEARS AGO. HE DID A FANTASTIC JOB THERE.

BW	WT.	WEAN RATIO	SC
83	1031	-	36

HIP HT.	CALVING EASE	TEMP.	UDDER	COW/CALF RATIO
48	3	1	1	0%

**72Z** DDA *Back To The Future* 72Z

05/20/2022 REG: 20644080

FAIRVIEW BAR LAD 4218  
**DDA BAR LAD 177U**  
 DDA HANA 940

DDA LEDGER 76E  
**DDA ZELDA 103**  
 DDA ZELDA 953

SOUTHOLM BAR LAD 50D  
 MILLADY OF GRASSY LANES  
 BANJO OF WYE UMF 6413  
 DIAMOND HENRETTA 368

**D D A FAHREN 21X**  
**D D A ZELDA 409**  
**DDA FAVOUR 26F**  
**DDA ZELDA 055**

WHEN IT COMES TO PRODUCING GOOD FUNCTIONAL FEMALES, I CAN SEE IT DEEP IN THESE PEDIGREES. OUR FAMILY HAS BEEN BREEDING FOR THIS SAME THING FOR A VERY LONG TIME. IN A THREE GENERATION PEDIGREE I SEE A COW THAT WAS BORN IN 1983 THAT MY FATHER WOULD HAVE BRED. I CAME HOME TO THE RANCH IN 1988. DDA BAR LAD 177U IS AN EXAMPLE OF THE GOOD OLD PROVEN GENETICS THAT WE HAVE BEEN STRIVING FOR. THE MOTHER TO THIS YOUNG BULL HAD HER 12TH CALF THIS SPRING. THE DDA ZELDA 055 HAS HAD 17 CALVES HERE. SHE TRACES TO THE SAME 368 COW FAMILY AS IN THE SIRE SIDE. ONE MORE TIME TO THE 368 THROUGH THE ZELDA 409. I COULD GO ON AND ON, HOWEVER I BETTER QUIT THERE ON THIS ONE.

BW	WT.	WEAN RATIO	SC
72	960	105	35

HIP HT.	CALVING EASE	TEMP.	UDDER	COW/CALF RATIO
49	3	1	1	52%



**GREAT DAM TO 76Z**  
**DDA MELISA 174**

**76Z** DDA *Back To The Future* 76Z

05/20/2022 REG: 206644083

FAIRVIEW BAR LAD 4218  
**DDA BAR LAD 177U**  
 DDA HANA 904

CEDAR CHEST  
**DDA MELISA 594**  
 DDA MELISA 174

SOUTHOLM BAR LAD 50D  
 MILLADY OF GRASSY LANES  
 BANJO OF WYE UMF 6413  
 DIAMOND HENRETTA 368

COLE CREEK BLACK CEDAR 46P  
 BOX O LUCY 7012  
 DDA LODGE E5H  
 DDA MELISA 923

ANOTHER GOOD DDA BAR LAD 177U. DDA MELISA 594 IS NURSING HER 7TH CALF, MOTHER TO 594 WILL WEAN HER 10TH CALF. THIS GREAT PEDIGREE WILL TRACE TO BOTH OR DDA MELISA 824 AND DDA HANA 940. THEY BOTH STAYED IN PRODUCTION BEYOND 19 YEARS OLD.

BW	WT.	WEAN RATIO	SC
83	891	100	34

HIP HT.	CALVING EASE	TEMP.	UDDER	COW/CALF RATIO
47	3	1	1	48%

**74Z** DDA *Back To The Future* 74Z

05/20/2022 REG: 20644081

FAIRVIEW BAR LAD 4218  
**DDA BAR LAD 177U**  
 DDA HANA 940

DDA FREMAN 80R  
**DDA SANDY 871**  
 DDA SANDY 522

SOUTHOLM BAR LAD 50D  
 MILLADY OF GRASSY LANES  
 BANJO OF WYE UMF 6413  
 DIAMOND HENRETTA 368

DDA EMBLAZON 27C  
**DDA MELISA E703**  
**JAD FREMONT Z6306**  
**DDA SANDY 311**

I KNOW THE DDA FREMAN 80R IS A HALF BROTHER SISTER MATING BACK TO OUR DDA MELISA 824, ON TOP SIDE YOU HAVE DDA HANA 940 BACK TO 368. IN THE DAYS OF MOST BREEDERS BREEDING FOR THAT PERFECT NUMBER, IT HAS NOT BEEN EASY TO BREED FOR FUNCTION AND LONGEVITY. NOW THAT MANY YEARS HAVE PASSED, IT IS EASY TO SEE THAT MOST HERDS HAVE PUT WAY TOO MUCH EMPHASIS ON NUMBERS AND NOT ENOUGH ON FUNCTION AND LONGEVITY.

BW	WT.	WEAN RATIO	SC
78	994	107	36

HIP HT.	CALVING EASE	TEMP.	UDDER	COW/CALF RATIO
48	3	1	1	50%

**75Z** DDA *Back To The Future* 75Z

05/20/2022 REG: 20644082

FAIRVIEW BAR LAD 4218  
**DDA BAR LAD 177U**  
 DDA HANA 940

RESURGAM BLU-PRINT T368  
**DDA BLUE PRINT 762**  
 DDA GINNA 0104

SOUTHOLM BAR LAD 50D  
 MILLADY OF GRASSY LANES  
 BANJO OF WYE UMF 6413  
 DIAMOND HENRETTA 368

RESURGAM BLU-PRINTP215  
 WAIMATA K1147  
 HYLAND BC 0668  
 DDA GINNA 696

IT APPEARS SIRE SIRE THE MOST CALVES ARE ALSO THE SAME SIRE SIRE AS THE CALVES THAT PERFORM THE HIGHEST. WE HAVE TALKED ABOUT THE FUNCTION AND LONGEVITY IN THE DDA BAR LAD 177U. THE MOTHER, DDA BLUE PRINT 762 IS NURSING HER 5TH CALF. THE DDA GINNA 850 WAS A PATERNAL SISTER TO DDA MELISA 824. THE 850 COW WEANED 14 CALVES. SHE WAS A BEAUTIFUL COW.

BW	WT.	WEAN RATIO	SC
74	994	98	36

HIP HT.	CALVING EASE	TEMP.	UDDER	COW/CALF RATIO
50	3	1	1	43%

**77Z** DDA *Trouble Free* 77Z

05/20/2022 REG: 20644084

FAIRVIEW BAR LAD 4218  
**DDA BAR LAD 177U**  
 DDA HANA 940

DDA PINEBANK SE 10D  
**DDA GINNY 949**  
 DDA GINNY 469

SOUTHOLM BAR LAD 50D  
 MILLADY OF GRASSY LANES  
 BANJO OF WYE UMF 6413  
 DIAMOND HENRETTA 368

PINEBANK WAIGROUP 152/04  
 PINEBANK WAIGROUP 92/99  
 DDA EMULATION 30K  
 DDA GINNY 1106

I DON'T WANT TO SOUND LIKE A BROKEN RECORD, BUT THERE ARE ONLY SO MANY WAYS TO SAY, HERE IS ANOTHER GOOD DDA BAR LAD 177U SON. THE DDA GINNY 949 WOULD BE A YOUNG COW, HOWEVER HER MOTHER DDA GINNY 469 IS NURSING HER 7TH CALF, THE MOTHER TO 469 IS NURSING HER 11TH CALF. NOT MANY BULLS THAT WILL SELL THIS YEAR ANYWHERE THAT HAS THREE GENERATIONS PRODUCING. ONE MORE GENERATION BACK, THE DDA GINNY 781 WEANED 10 CALVES. MOST HERDS ACROSS THE USA CAN AND WILL SEE IMPROVEMENT IN FUNCTION AND LONGEVITY BY USING DDA BULLS.

BW	WT.	WEAN RATIO	SC
74	970	120	36

HIP HT.	CALVING EASE	TEMP.	UDDER	COW/CALF RATIO
49	3	1	1	67%

**79Z** DDA *George* 79Z

05/21/2022 REG: 20644085

PINEBANK SE 10D  
**DDA CARROLTON 45W**  
 DDA GINNY 458

DDA PINEBANK SE 10D  
**DDA MELISA 0107**  
 DDA MELISA 502

PINEBANK WAIGROUP 152/04  
 PINEBANK WAIGROUP 92/99  
 O C C HAMILTON 635H  
 D D A GINNY 604

PINEBANK WAIGROUP 152/04  
 PINEBANK WAIGROUP 92/99  
 DDA B&T 18K  
 DDA MELISA 396

THE DDA GEORGE 79Z IS ANOTHER GOOD HALF BROTHER SISTER MATING TO PINEBANK SE 10D. THE SIRE DDA CARROLTON 45W IS ONE OF THOSE BULLS THAT WE CHOSE BECAUSE WE LOVE WHAT HIS MOTHER HAS DONE. WE LOOK AT HIM NOW AND ONLY CAN SAY WOW, HE IS IMPRESSIVE. I SUSPECT THAT THIS BULL COULD HAVE A LITTLE MORE FRAME THAN AVERAGE DDA. THE GRANDMOTHER IS STILL IN PRODUCTION AND IS NURSING HER 7TH CALF.

BW	WT.	WEAN RATIO	SC
78	971	122	32

HIP HT.	CALVING EASE	TEMP.	UDDER	COW/CALF RATIO
49	3	1	1	70%



80Z

DDA Alberta 80Z

05/21/2022 REG: 20644087

DDA ATHABASCA 59R
DDA GONE FISHING 101W
DDA GALATEA 859
DDA JUST RIGHT 89U
DDA GRETTA 023
DDA GRETTA 032
DDA PINEBANK 50H
DDA GINNY 27C
DDA EMBLAZON 27C
DDA GALATEA 031
DDA LODGE E5H
DDA ZELDA 674
DDA LODGE E5H
GRETTA 136 DDA

I CAN SEE THAT THIS PEDIGREE TRACES TO OUR DDA MELISA 824 MANY TIMES. HIS MOTHER IS DOUBLE BRED DDA LODGE E5H. WE HAVE TALKED ABOUT THE GOODNESS IN OUR DDA GALATEA 859 COW. WE HAVE USED TWO SONS OF HERS IN OUR HERD. THE GRANDMOTHER DDA GRETTA 032 WEANED 10 CALVES. SHE WAS A FLAWLESS DDA LODGE E5H DAUGHTER. THE GREAT GRANDMOTHER WEANED 12 CALVES.

Table with 4 columns: BW, WT., WEAN RATIO, SC. Values: 65, 863, 102, 35

Table with 5 columns: HIP HT., CALVING EASE, TEMP., UDDER, COW/CALF RATIO. Values: 47, 3, 1, 1, 54%

83Z

DDA Surgeon 83Z

05/22/2022 REG: 20644089

HYLAND BC 0668
DDA PONDERA 10U
DDA KERRY 519
DDA LODGE E5H
DDA SANDY 1107
DDA SANDY 931
LODGE OF WYE
HYLAND BARBARA 0266
DDA B&T 18K
DDAY KERRY 365
LODGE OF WYE
D D A MELISA 824DDA
EMBLAZON 27C
DDA SANDY 308

STUDYING THIS GREAT PEDIGREE I CAN ONLY SAY WOW. TALK ABOUT STACKING GOOD MATERNAL GENETICS. I SEE LODGE OF WYE ON BOTH SIDES OF THIS PEDIGREE. I SEE DOUBLE BRED TO OUR GREAT DDA MELISA 824. I BELIEVE DDA SURGEON 83Z WILL BE A NO RISK HERD IMPROVER. MOTHER DDA SANDY IS NURSING HER 11TH CALF. THE GRANDMOTHER DDA SANDY 931 WEANED 9 CALVES. SHE IS ALSO THE MOTHER TO DDA BLUE PRINT 29R, WHO IS SIRE TO MANY GOOD COWS IN OUR HERD TODAY.

Table with 4 columns: BW, WT., WEAN RATIO, SC. Values: 78, 945, 104, 34

Table with 5 columns: HIP HT., CALVING EASE, TEMP., UDDER, COW/CALF RATIO. Values: 49, 3, 1, 1, 45%

92Z

DDA Back To The Future 92Z

05/23/2022 REG: 20644094

FAIRVIEW BAR LAD 4218
DDA BAR LAD 177U
DDA HANA 940
DDA EMBLAZON 27C
DDA KERRY 9100
DDA KERRY 834
SOUTHOLM BAR LAD 50D
MILLADY OF GRASSY LANES
BANJO OF WYE UMF 6413
DIAMOND HENRETTA 368
O C C EMBLAZON 854E
D D A MELISA 824
FAHREN OF WYE UMF 5830
D D A KERRY 680

DDA BAR LAD 177U HAS DONE AN AMAZING JOB FOR US. HE IS NOT THE BULL THAT I THOUGHT WOULD SIRE MORE CALVES THAN ANY OTHER BULL. THE DNA TESTING THAT WE HAVE DONE TELLS A BIG STORY. THIS IS ONE OF THE MANY ADVANTAGES TO BUYING A BULL FROM A PERSON THAT MULTI SIRE BREEDS HIS COWS. IT IS DIFFICULT OR IMPOSSIBLE TO DETECT THE BULL THAT IS DOING HIS JOB THE BEST. IT TELLS ME A LOT ABOUT A BULL. I BELIEVE BUYING A SON Sired BY SUCH A SIRE HAS HUGE ADVANTAGES.

Table with 4 columns: BW, WT., WEAN RATIO, SC. Values: 74, 864, 107, 34

Table with 5 columns: HIP HT., CALVING EASE, TEMP., UDDER, COW/CALF RATIO. Values: 47, 3, 1, 1, 57%

94Z

DDA Surgeon 94Z

05/24/2022 REG: 20644095

HYLAND BC 0668
DDA PONDERA 10U
DDA KERRY 519
DDA CEDAR RIDGE 34M
DDA LOLA 408
DDA LOLA 274
LODGE OF WYE
HYLAND BARBARA 0266
DDA B&T 18K
DDA KERRY 365
COLE CREEK RIDGE 1V
DDA GINNA 318
D D A BANJO 1101
DDA LOLA 778

THE MOTHER DDA LOLA 408 IS NURSING HER 8TH CALF THIS YEAR. THIS GREAT PEDIGREE HAS HYLAND BC 0668, B&T 18K, DDA GINNA 318 WHO HAD 13 CALVES, INCLUDING A HERD SIRE DDA CEDAR RIDGE 34M. DDA BANJO 1101 WHO IS A FULL BROTHER TO DDA SANDY 404. THIS WOULD BE SAME COW FAMILY AS IN DDA BAR LAD 177U AND DDA ALLIANCE 142V.

Table with 4 columns: BW, WT., WEAN RATIO, SC. Values: 78, 843, 93, 34

Table with 5 columns: HIP HT., CALVING EASE, TEMP., UDDER, COW/CALF RATIO. Values: 46, 3, 1, 3, 46%

87Z

DDA Alberta 87Z

05/22/2022 REG: 20644091

DDA ATHABASCA 59R
DDA GONE FISHING 101W
DDA GALATEA 859
PINEBANK SE 10D
DDA TINA 0130
DDA TINA 428
DDA PINEBANK 50H
DDA GINNY 159
DDA EMBLAZON 27C
DDA GALATA 031
PINEBANK WAIGROUP 152/04
PINEBANK WAIGROUP 92/99
DDA EMULATION 30K
DDA TINA 181

THE DDA ALBERTA 87Z WOULD BE ANOTHER YOUNG BULL THAT WILL HAVE MANY GOOD COWS AND SIRES, IN HIS PEDIGREE. I SEE DDA GALATEA 859, DDA PINEBANK 50H, DDA GALATEA 031, PINEBANK SE 10D, DDA EMULATION 30K, TO MENTION A FEW. I SEE GRANDMOTHER DDA TINA 428 IS NURSING HER 8TH CALF. THE GREAT GRANDMOTHER DDA TINA 181 WEANED 10 CALVES.

Table with 4 columns: BW, WT., WEAN RATIO, SC. Values: 78, 821, 99, 33

Table with 5 columns: HIP HT., CALVING EASE, TEMP., UDDER, COW/CALF RATIO. Values: 47, 3, 1, 1, 58%

88Z

DDA Boss Hog 88Z

05/22/2022 REG: 20644092

PINEBANK SE 10D
DDA CARROLTON 45W
DDA GINNY 458
DDA JUST RIGHT 89U
DDA SANDY 035
DDA SANDY 583
PINEBANK WAIGROUP 152/04
PINEBANK WAIGROUP 92/99
O C C HAMILTON 635H
D D A GINNY 604
DDA LODGE E5H
DDA ZELDA 674
RESURGAM BLU-PRINT T368
DDA SANDY 718

HERE IS ANOTHER GOOD SON OUT OF DDA CARROLTON 45W. ON THE BOTTOM SIDE OF THIS PEDIGREE YOU WILL FIND THE SAME COW FAMILY AS IN OUR DDA BAR LAD 177U AND DDA ALLIANCE 142V. THE DDA HANA 940 COW IS A FULL SISTER TO DDA SANDY 404.

Table with 4 columns: BW, WT., WEAN RATIO, SC. Values: 69, 850, 98, 33

Table with 5 columns: HIP HT., CALVING EASE, TEMP., UDDER, COW/CALF RATIO. Values: 46, 3, 1, 1, 57%

96Z

DDA Right On 96Z

05/26/2022 REG: 20644096

DDA LODGE E5H
DDA JUST RIGHT 30U
DDA WNDY 546
FAIRVIEW BAR LAD 3218
DDA SANDY 957
DDA SANDY 421
LODGE OF WYE
D D A MELISA 824
FAIRVIEW JH CASCADE 2226
DDA WENDY 839
SOUTHOLM BAR LAD 50D
MILLADY OF GRASSY LANES
COLE CREEK CEDAR RIDGE 1V
SANDY 117 DDA

THE DDA RIGHT ON 96Z IS ANOTHER GOOD 30U SON. I SEE THE SAME SANDY COW FAMILY AS IN DDA BAR LAD 177U AND 142V. THE MOTHER TO BOTH OF THESE GREAT SIRES WAS 18, AND 19 YEARS OLD WHEN THEY WERE BORN. I ALSO SEE FAIRVIEW BAR LAD 4218 AS SIRE OF MOTHER. SO THAT TELLS ME THAT THERE WOULD BE A CLOSE RELATIONSHIP BETWEEN OUR DDA BAR LAD 177U AND MOTHER DDA SANDY 957

Table with 4 columns: BW, WT., WEAN RATIO, SC. Values: 78, 889, 99, 35

Table with 5 columns: HIP HT., CALVING EASE, TEMP., UDDER, COW/CALF RATIO. Values: 47, 3, 1, 1, 52%

98Z

DDA Back To The Future 98Z

05/26/2022 REG: 20644097

FAIRVIEW BAR LAD 4218
DDA BAR LAD 177U
DDA HANA 940
DDA EMULATION 30K
DDA HOLLY 465
DDA HOLLY 102
SOUTHOLM BAR LAD 50D
MILLADY OF GRASSY LANES
BANJO OF WYE UMF 6413
DIAMOND HENRETTA 368
EMULATION N BAR 5522
DDA GINNY 552
D D A BANJO 1101
DDA HOLLY 918

THE GOOD DDA BAR LAD 177U SONS SEEM TO NEVER END. IN THIS PEDIGREE I ALSO SEE DDA BANJO 1101 WHO IS VERY CLOSELY RELATED TO THE MOTHER OF 177U. THE DDA BACK TO THE FUTURE 98Z MOTHER DDA HOLLY 465 IS NURSING HER 8TH CALF NOW, HER MOTHER DDA HOLLY 102 IS WORKING ON HER 11TH CALF, HOW MANY SALES WILL YOU HAVE TO LOOK THROUGH TO FIND THAT THE GREAT GRANDMOTHER HAD HER 12 CALF THIS SPRING. WHEN I TALK ABOUT FUNCTION AND LONGEVITY THIS IS WHAT YOU CAN ACCOMPLISH BY USING DIAMOND D ANGUS GENETICS.

Table with 4 columns: BW, WT., WEAN RATIO, SC. Values: 78, 877, 99, 35

Table with 5 columns: HIP HT., CALVING EASE, TEMP., UDDER, COW/CALF RATIO. Values: 47, 3, 1, 1, 45%



100Z

**DDA George 100Z**

05/20/2022 REG: 20754770

PINEBANK SE 10D  
**DDA CARROLTON 45W**  
 DDA GINNY 458  
  
 DDA ATHABASCA 91N  
**DDA GINNY 0115**  
 DDA GINNY 287

PINEBANK WAIGROUP 152/04  
 PINEBANK WAIGROUP 92/99  
 O C C HAMILTON 635H  
 D D A GINNY 604  
**DDA PINEBANK 50H**  
**DDA HOLLY 664**  
**HYLAND BC 0668**  
**DDA GINNY 982**

I SEE PINEBAK ON BOTH SIDES OF THIS PEDIGREE. LOOKED AT DDA CARROLTON 45W YESTERDAY, WHAT A BEAUTIFUL YOUNG BULL. I PREDICT HE WILL BE A BULL THAT SIRES MANY CALVES HERE IN THE FUTURE. THE SIRE TO THE MOTHER DDA ATHABASCA 91N WAS SOLD INTO A COMMERCIAL HERD, RUN AT ELEVATIONS IN EXCESS OF 10,000 FEET. HE DID EXCEPTIONAL WELL, SO I OFFERED TO BUY HIM BACK. WHAT A GOOD INDIVIDUAL HE WAS. LOADED WITH LIBIDO AND AND ATHLETIC ABILITY.

BW	WT.	WEAN RATIO	SC
69	925	-	35

HIP HT.	CALVING EASE	TEMP.	UDDER	COW/CALF RATIO
47	3	1	1	-

102Z

**DDA Trouble Free 102Z**

05/27/2022 REG: 20643856

O C C GREAT PLAINS 943G  
**DDA GREAT PLAINS 77U**  
 DDA MELISA E808  
  
 DDA FREEDOM 17L  
**DDA MELISA 516**  
 DDA MELISA E806

N BAR EMULATION EXT  
 DIXIE ERICA OF C H 1019  
 LODGE OF WYE  
 D D A MELISA 824  
**DDA FREEMEN 68F**  
**SANDY 117 DDA**  
 LODGE OF WYE  
 D D A MELISA 824

DDA MELISA E808 IS IN GRANDMOTHER POSITON ON BOTH SIDES OF THE PEDIGREE. IN MY OPINION THIS COULD BE ONE OF THE BEST PEDIGREES SELLING. THE DDA TROUBLE FREE 102Z WILL PRODUCE FLAWLESS DAUGHTERS THAT ARE VERY SIMILAR TO DDA MELISA E808. ANY TIME A POSITION IS OCCUPIED BY THE SAME ANIMAL THIS CLOSE TO THE ACTUAL ANIMAL, THERE IS NOT MUCH ROOM FOR VARIATION. TYPICALLY OFFSPRING WILL WAY OUT PRODUCE THE LINE BRED INDIVIDUAL WHEN USED ON NON-RELATED OFFSPRING.

BW	WT.	WEAN RATIO	SC
74	936	99	34

HIP HT.	CALVING EASE	TEMP.	UDDER	COW/CALF RATIO
47	3	1	1	43%



**DDA MELISA 824**  
 SHE IS ALSO IN ALMOST EVERY PEDIGREE SELLING.

ANGUS CATTLE USED TO BE NOTED FOR THEIR FNCTION, FERTILITY, AND LONGEVITY. AS A RESULT OF THE NUMBER CHASE GAME, MANY ANGUS CATTLE HAVE TOTALLY LOST THE CHARACTERISTICS THAT MADE THEM POPULAR IN THE FIRST PLACE. THEY ARE NOT BRED TO LAST. THIS IS OUR 824 COW. SHE LIVED TO BE 21 YEARS OLD. SHE IS IN ALMOST EVERY DIAMOND D ANGUS PEDIGREE, SOME MANY TIMES. IF YOU WOULD LIKE TO ADD SOME LONGEVITY AND FUNCTION BACK INTO YOUR HERD, PLEASE CONTACT US.

106Z

**DDA Back To The Future 106Z**

05/28/2022 REG: 20643857

FAIRVIEW BAR LAD 4218  
**DDA BAR LAD 177U**  
 DDA HANA 940  
  
 HYLAND BC 0668  
**DDA JODY 742**  
 DDA JODY 560

SOUTHOLM BAR LAD 50D  
 MILLADY OF GRASSY LANES  
 BANJO OF WYE UMF 6413  
 DIAMOND HENRETТА 368  
 LODGE OF WYE  
 HYLAND BARBARA 0266  
 ESTON OF LOOKOUT 83Z  
**DDA JODY 118**

THE DDA BACK TO THE FUTURE 106Z IS AN EXAMPLE OF BREEDING MATERNAL TO ANOTHER MATERNAL. BY DOING THIS LEAVES VERY LITTLE OTHER CHOICE, THAN WHEN BRED TO ANOTHER MATERNAL LINE TO GET A MATERNAL OFFSPRING BACK. MOTHER TO THIS GOOD BULL WILL WEAN HER 5TH CALF THIS WINTER, SHE IS A HYLAND BC 0668 DAUGHTER. NOTICE BACK TO LODGE OF WYE. THE GREAT GRANDMOTHER DDA JODY 840 WEANED 13 CALVES HERE AT DIAMOND D ANGUS.

BW	WT.	WEAN RATIO	SC
74	908	96	35

HIP HT.	CALVING EASE	TEMP.	UDDER	COW/CALF RATIO
46	3	1	1	43%

108Z

**DDA Back To The Future 108Z**

05/29/2022 REG: 20754771

FAIRVIEW BAR LAD 4218  
**DDA BAR LAD 177U**  
 DDA HANA 940  
  
 MH MICK 53  
**DDA ZELDA 1113**  
 D D A ZELDA 791

SOUTHOLM BAR LAD 50D  
 MILLADY OF GRASSY LANES  
 BANJO OF WYE UMF 6413  
 DIAMOND HENRETТА 368  
 O C C EMBLAZON 854E  
 D D A MELISA 545  
 CANDOR OF WY UMF 7328  
 MISS DIAMOND JUMBO 580

DDA BACK TO THE FUTURE 108Z HAS OUR GREAT DIAMOND HENRETТА 368 ON TOP AND BOTTOM OF THIS GREAT PEDIGREE. DDA MELISA 545 IS THE MOTHER TO OUR DDA MELISA 824. SO NOT EXACTLY SURE RELATIONSHIP, BUT MH MICK 53 IS RELATED VERY CLOSE TO DDA EMBLAZON 27C. DDA ZELDA 791 IS THE MOTHER TO OUR DDA FAHREN 5Z AND OF COURSE DDA HANA 940 MOTHER TO DDA BAR LAD 177U AND DDA ALIANCE 142V. MOTHER TO DDA BACK TO THE FUTURE 108Z HAS WEANED 10 CALVES, DDA ZELDA 79 WEANED 11 NATURAL CALVES, OTHERS ARE EMBRYO OFFSPRING. GRANDMOTHER MISS DIAMOND JUMBO 580 WEANED 18 NATURAL CALVES, SHE WAS ALSO IN AN EMBRYO PROGRAM. THE DIAMOND HENRETТА 368 IS ONE MORE GENERATION BACK IS ALSO THE GRANDMOTHER TO BOTH DDA 177U AND 142V. SHE STAYED IN PRODUCTION UNTIL SHE WAS 22 YEARS OLD.

BW	WT.	WEAN RATIO	SC
78	859	101	35

HIP HT.	CALVING EASE	TEMP.	UDDER	COW/CALF RATIO
48	3	1	1	44%

112Z

**DDA Surgeon 112Z**

05/01/2022 REG: 20643860

HYLAND BC 0668  
**DDA PONDERA 10U**  
 DDA KERRY 519  
  
 PINEBANK SE 10D  
**DDA ZELDA 983**  
 DDA ZELDA 610

LODGE OF WYE  
 HYLAND BARBARA 0266  
 DDA B&T 18K  
 DDA KERRY 365  
**PINEBANK WAIGROUP 152/03**  
**PINEBANK WAIGROUP 92/99**  
 H A AR PINEBANK 443 202  
**DDA ZELDA 3142**

DDA PONDERA 10U, THE SIRE OF DDA SURGEON 112Z HAS BEEN A BREEDING MACHINE. DUE TO INJURES WE WERE RELUCTANT TO TURN HIM INTO OUR MULTI BREEDING GROUP THIS SUMMER. WE WITNESSED HIM ON MULTIPLE OCCASIONS BREEDING COWS. HE IS FAR FROM THE HEAVIEST OR THE PRETTIEST BULL IN THE BREEDING GROUP, LARGELY TO DO WITH OLD INJURY'S. THE MOTHER TO THIS YOUNG BULL IS ALSO A YOUNG COW. GRAND MOTHER WILL WEAN HER 6TH CALF THIS WINTER. GREAT GRANDMOTHER HAS WEANED 9 CALVES. I SHE TRACES TO SAME COW FAMILY AS OUR DDA BAR LAD 177U AND DDA ALIANCE 142V.

BW	WT.	WEAN RATIO	SC
74	885	98	34

HIP HT.	CALVING EASE	TEMP.	UDDER	COW/CALF RATIO
47	3	1	3	48%

115Z

**DDA Trouble Free 115Z**

06/02/2022 REG: 20643863

O C C GREAT PLAINS 943G  
**DDA GREAT PLAINS 77U**  
 DDA MELISA E808  
  
 DDA JUST RIGHT 89U  
**DDA MAY 9162**  
 DDA MAY 798

N BAR EMULATION EXT  
 DIXIE ERICA OF C H 1019  
 LODGE OF WYE  
 D D A MELISA 824  
**DDA LODGE E5H**  
**DDA ZELDA 674**  
 PINEBANK 64/10  
**DDA MAY 760**

THIS IS A GOOD DDA TROUBLE FREE 115Z. ANOTHER GOOD DDA GREAT PLAINS 77U BACK TO A YOUNG DDA JUST RIGHT 89U DAUGHTER. GRANDMOTHER DDA MAY 760 HAS HAD 11 CALVES HERE. THEN HER MOTHER DDA MAY 059 IS ALSO THE MOTHER TO DDA BOSS 88U, WHO WAS HER 17TH CALF BORN HERE AT DDA.

BW	WT.	WEAN RATIO	SC
74	995	113	34

HIP HT.	CALVING EASE	TEMP.	UDDER	COW/CALF RATIO
47	3	1	1	55%



116Z

DDA George 116Z

06/02/2022 REG: 20643864

PINEBANK SE 10D  
DDA CARROLTON 58W  
DDA TINA 428

DDA PONDERA 10U  
DDA MARY 040  
DDA MARY 577

PINEBANK WAIGROUP 152/04  
PINEBANK WAIGROUP 92/99  
DDA EMULATION 30K  
DDA TINA 181  
HYLAND BC 0668  
DDA KERRY 519  
H A R PINEBANK 443 202  
DDA WINCHESTER 2103

118Z

DDA Back To The Future 118Z

06/02/2022 REG: 20643866

FAIRVIEW BAR LAD 4218  
DDA BAR LAD 177U  
DDA HANA 940

FAIRVIEW BAR LAD 4218  
DDA ZELDA 746  
DDA ZELDA 057

SOUTHOLM BAR LAD 50D  
MILLADY OF GRASSY LANES  
BANJO OF WYE UMF 6413  
DIAMOND HENRETТА 368  
SOUTHOLM BAR LAD 50D  
MILLADY OF GRASSY LANES  
DDA EMBLAZON E41  
DDA ZELDA 339

NO QUESTION THAT DDA BAR LAD 177U HAS DONE A TERRIFIC JOB FOR US HERE AT DDA. HERE IS YOUR CHANCE OF BUYING A HALF-BROTHER SISTER MATING TO THE GREAT BAR LAD 4218. TO NO SURPRISE I ALSO FIND DIAMOND HENRETТА 368 IN THE MOTHERS SIDE. SHE IS ONE OF THE REASONS DIAMOND D ANGUS IS DIAMOND D ANGUS.

125Z

DDA Alberta 125Z

06/06/2022 REG: 20643872

DDA ATHABASCA 59R  
DDA GONE FISHING 101W  
DDA GALATEA 859

DDA BLUE PRINT 29R  
DDA SANDY 011  
DDA SANDY 224

DDA PINEBANK 50H  
DDA GINNY 159  
DDA EMBLAZON 27C  
DDA GALATEA 031  
RESURGAM BLU-PRINT T368  
DDA SANDY 931  
DDA SURE ENOUGH 143H  
DDA SANDY 731

FUNCTION AND LONGEVITY EVERYWHERE. WE HAVE TALKED ABOUT THE GOODNESS IN THE DDA GALATEA 859 AND HER MOTHER DDA GALATEA 031 IN PREVIOUS NOTES. SO LETS CONCENTRATE ON MOTHERS SIDE. THE GRANDMOTHER DDA SANDY 224 HAS WEANED 9 CALVES. THE SANDY COW FAMILY IS THE SAME COW FAMILY THAT YOU WILL FIND IN DDA BAR LAD 177U AND DDA ALLIANCE 142V. YOU WILL SEE BOTH SIRE AND DAM SIDE OF MOTHERS PEDIGREE HAS THE SANDY COW FAMILY. YOU WILL ALSO FIND DDA MELISA 824 ON BOTH SIDES OF THIS PEDIGREE.

128Z

DDA Right On 128Z

06/07/2022 REG: 20643875

DDA LODGE E5H  
DDA JUST RIGHT 30U  
DDA WENDY 546

H A R PINEBANK 443 202  
DDA ZELDA 826  
DDA ZELDA 122

LODGE OF WYE  
D D A MELISA 824  
FAIRVIEW JH CASCADE 2226  
DDA WENDY 839  
PINEBANK WAIGROUP 41/97  
DDA STELLA 443  
DDA LODGE E5H  
DDA ZELDA 855

I SEE DDA LODGE E5H ON BOTH SIDES OF PEDIGREE ON DDA RIGHT ON 128Z. DDA LODGE E5H IS SIRE TO SOME OF OUR VERY FAVORITE COWS TODAY. THE DDA ZELDA 122 HAS WEANED 8 CALVES HERE. I ALSO SEE LODGE OF WYE AGAIN ON MOTHERS SIDE. THE DDA MELISA 824 SHOWS UP ALSO MULTIPLE TIMES.

WHAT A GREAT PEDIGREE DDA GEORGE 116Z HAS. PINEBANK SE 10D AND EMULATION 30K ON SIRE SIDE. HIS MOTHER IS A YOUNG DDA PONDERA 10U DAUGHTER OUT OF A PINEBANK 202 DAUGHTER. THE SIRE TRACES BACK TO A FULL BROTHER TO OUR DDA MELISA 824 COW. SHE IS MOTHER TO DDA EMBLAZON 27C AND DDA LODGE E5H.

Table with 4 columns: BW, WT., WEAN RATIO, SC. Values: 78, 803, 110, 34.

Table with 4 columns: BW, WT., WEAN RATIO, SC. Values: 78, 1025, 117, 35.

Table with 4 columns: BW, WT., WEAN RATIO, SC. Values: 69, 909, 116, 35.

Table with 4 columns: BW, WT., WEAN RATIO, SC. Values: 74, 897, 103, 33.

Table with 5 columns: HIP HT., CALVING EASE, TEMP., UDDER, COW/CALF RATIO. Values: 47, 3, 1, 1, 64%.

Table with 5 columns: HIP HT., CALVING EASE, TEMP., UDDER, COW/CALF RATIO. Values: 50, 3, 1, 1, 63%.

Table with 5 columns: HIP HT., CALVING EASE, TEMP., UDDER, COW/CALF RATIO. Values: 46, 3, 1, 1, 68%.

Table with 5 columns: HIP HT., CALVING EASE, TEMP., UDDER, COW/CALF RATIO. Values: 47, 3, 1, 1, 52%.

120Z

DDA Surgeon 120Z

06/02/2022 REG: 20643868

HYLAND BC 0668  
DDA PONDERA 10U  
DDA TINA 428

JAD FREMONT Z6306  
DDA ZELDA 6156  
DDA ZELDA 193

LODGE OF WYE  
HYLAND BARBARA 0266  
DDA B&T 18K  
DDA KERRY 365  
JAD EX T3199  
SHOSHONOE FRANCES 6306  
HYLAND BC 0668  
DDA ZELDA 736

124Z

DDA Bill 124Z

06/06/2022 REG: 20754773

PINEBANK SE 10D  
DDA CARROLTON 58W  
DDA TINA 428

DDA GREAT PLAINS 77U  
DDA KERRY 085  
DDA KERRY 853

PINEBANK WAIGROUP 152/04  
PINEBANK WAIGROUP 92/99  
DDA EMULATION 30K  
DDA TINA 181  
O C C GREAT PLAINS 943G  
DDA MELISA E808  
H A R PINEBANK 443 202  
DDA KERRY 375

IN THIS GREAT PEDIGREE I SEE PINEBANK AND EMULATION ON BOTH SIDE OF PEDIGREE. ONE THING THAT I NOTICED THAT HIS DDA KERRY 085, A YOUNG COW CALVED TOWARDS THE END OF CALVING SEASON THE FIRST YEAR SHE CALVED TO NEAR THE START OF CALVING SEASON THE NEXT. TO ME THIS SHOWS GREAT FERTILITY.

129Z

DDA Right On 129Z

06/07/2022 REG: 20643876

DDA LODGE E5H  
DDA JUST RIGHT 30U  
DDA WENDY 546

JAD FREMONT Z6306  
DDA MELISA 970  
DDA MELISA 581

LODGE OF WYE  
D D A MELISA 824  
FAIRVIEW JH CASCADE 2226  
DDA WENDY 839  
JAD EX T3199  
SHOSHONE FRANCES 6306  
DDA B&T 18K  
DDA MELISA 044

HERE IS ANOTHER PEDIGREE THAT TRACES TO LODGE OF WYE MANY TIMES. THE MOTHER TO DDA RIGHT ON 129Z WILL WEAN HER 3RD CALF THIS WINTER, HER GRANDMOTHER DDA MELISA 044 HAS WEANED 9 CALVES.

131Z

DDA Right On 131Z

06/08/2022 REG: 20643878

DDA LODGE E5H  
DDA JUST RIGHT 30U  
DDA WENDY 546

DDA SURE ENOUGH 143H  
DDA SANDY 224  
DDA SANDY 731

LODGE OF WYE  
D D A MELISA 824  
FAIRVIEW JH CASCADE 2226  
DDA WENDY 839  
DDA EMBLAZON 28A  
D D A MELISA 824  
BEAR OF WYE UMF 6591  
DDA SANDY 506

I SEE MELISA 824 ON BOTH SIDES THE PEDIGREE OF DDA RIGHT ON 131Z. THE MOTHER TO 131Z HAS WEANED 9 CALVES. HER MOTHER DDA SANDY 731 HAS WEANED 9 CALVES. I ALSO SEE THIS IS THE SAME SANDY COW FAMILY AS DDA BAR LAD 177U AND DDA ALLIANCE 142V. MATERNAL GRANDSIRE IS A 3/4 BROTHER TO DDA EMBLAZON 27C.

Table with 4 columns: BW, WT., WEAN RATIO, SC. Values: 69, 847, 99, 32.

Table with 4 columns: BW, WT., WEAN RATIO, SC. Values: 69, 761, -, 34.

Table with 4 columns: BW, WT., WEAN RATIO, SC. Values: 69, 856, 102, 33.

Table with 4 columns: BW, WT., WEAN RATIO, SC. Values: 78, 922, 109, 35.

Table with 5 columns: HIP HT., CALVING EASE, TEMP., UDDER, COW/CALF RATIO. Values: 47, 3, 1, 1, 50%.

Table with 5 columns: HIP HT., CALVING EASE, TEMP., UDDER, COW/CALF RATIO. Values: 46, 3, 1, 1, -.

Table with 5 columns: HIP HT., CALVING EASE, TEMP., UDDER, COW/CALF RATIO. Values: 46, 3, 1, 1, 68%.

Table with 5 columns: HIP HT., CALVING EASE, TEMP., UDDER, COW/CALF RATIO. Values: 46, 3, 1, 1, 46%.



**134Z** DDA *Back To The Future* 134Z 06/14/2022 REG: 20643879

SOUTHOM BAR LAD 50D  
MILLADY OF GRASSY LANES  
BANJO OF WYE UMF 6413  
DIAMOND HENRETTE 368  
O C C GREAT PLAINS 943G  
DDA GALATEA 859  
DDA LODGE E5H  
ZELDA 860 D D A

FAIRVIEW BAR LAD 4218  
DDA BAR LAD 177U  
DDA HANA 940  
DDA GREAT PLAINS 57R  
DDA ZELDA 9112  
DDA ZELDA 460

I SEE ZELDA 860 IN MOTHERS SIDE OF PEDIGREE, SHE WAS A DAUGHTER OF 580 WHO IS A MATERNAL SISTER TO DDA HANA 940. MOTHER OF DDA BAR LAD 177U AND DDA ALLIANCE 142V. WE HAVE ALSO USED TWO SONS OF THE GREAT DDA GALATEA 859. DDA GREAT PLAINS 57R WAS INJURED AT A YOUNG AGE AND WE LOST HIM. I ALSO SEE DDA ZELDA 460 IS A DDA LODGE E5H DAUGHTER.

BW	WT.	WEAN RATIO	SC
78	834	108	33

HIP HT.	CALVING EASE	TEMP.	UDDER	COW/CALF RATIO
48	3	1	1	53%

**135Z** DDA *Back To The Future* 135Z 06/15/2022 REG: 26043880

SOUTHOLM BAR LAD 50D  
MILLADY OF GRASSY LANES  
BANJO OF WYE UMF 6413  
DIAMOND HENRETTE 368  
D D A BANJO 1101  
DDA GALATEA 031  
O C C HAMILTON 635H  
D D A ZELDA 791

FAIRVIEW BAR LAD 4218  
DDA BAR LAD 177U  
DDA HANA 940  
DDA B&T 18K  
DDA ZELDA 637  
DDA ZELDA 055

THIS KIND OF FUNCTION AND LONGEVITY DOES NOT HAPPEN BY ACCIDENT. IT NEEDS TO BE SELECTED FOR. IN TODAY'S MAINSTREAM BREEDING IT HAS BEEN ALL ABOUT EPD NUMBERS. IT IS IMPOSSIBLE TO HAVE THE BEST OF BOTH WORLDS. IN THIS GREAT PEDIGREE I SEE GRANDMOTHERS ON BOTH SIDES OF PEDIGREE ARE GREAT FOUNDATION COWS. WE HAVE TALKED ABOUT THE GOOD IN DDA HANA 940 MANY TIMES. SO LET'S TALK ABOUT THE DDA ZELDA 055, WEANED 15 NATURAL CALVES. HER MOTHER WAS ALSO THE MOTHER TO DDA FAHREN 5Z. THE 791 COW WEANED ABOUT 15 CALVES, HER MOTHER MISS DIAMOND JUMBO 580 ALSO WEANED MORE THAN 15 CALVES. THEN ONE MORE GENERATION BACK IS DIAMOND HENRETTE 368 WHO IS ALSO THE MOTHER TO DDA HANA 940. GENETICS THAT HAS TAKEN OVER 50 YEARS TO BUILD ARE AVAILABLE IN BULLS LIKE 135Z.

BW	WT.	WEAN RATIO	SC
78	857	98	35

HIP HT.	CALVING EASE	TEMP.	UDDER	COW/CALF RATIO
47	3	1	1	45%

**157Z** DDA *Alberta* 157Z 07/13/2022 REG: 20643890

DDA PINEBANK 50H  
DDA GINNY 159  
DDA EMBLAZON 27C  
DDA GALATEA 031  
SOUTHOLM BAR LAD 50D  
MILLADY OF GRASSY LANES  
DDA LODGE E5H  
DDA ZELDA 141

DDA ATHABASCA 59R  
DDA GONE FISHING 101W  
DDA GALATEA 859  
FAIRVIEW BAR LAD 4218  
DDA ZELDA 056  
DDA ZELDA 6102

THIS IS WHAT WE HAVE BEEN DOING ALL MY LIFE. LINING UP GOOD TROUBLE FREE COWS IN A PEDIGREE WILL RESULT IN BULLS THAT SIRE GOOD TROUBLE FREE COWS. TRUST ME IT HAS NOT ALWAYS BEEN EASY, IN THE DAYS OF MOST PEOPLE BREEDING FOR MAXIMUM EPD NUMBERS, SOMETIMES IT FELT LIKE WE WERE THE ONLY ONES IN THE WORLD THAT THOUGHT THAT IT WOULD CAUSE A MATERNAL TRAIN WRECK. ANY WAY THE DDA ALBERTA 157Z WILL SIRE GOOD FEMALES WITH FEW PROBLEMS.

BW	WT.	WEAN RATIO	SC
69	831	119	33

HIP HT.	CALVING EASE	TEMP.	UDDER	COW/CALF RATIO
47	3	1	1	76%

**160Z** DDA *Back To The Future* 160Z 07/12/2022 REG: 20643892

SOUTHOLM BAR LAD 50D  
MILLADY OF GRASSY LANES  
BANJO OF WYE UMF 6413  
DIAMOND HENRETTE 368  
D D A BANJO 1101  
DDA GALATEA 031  
HYLAND BC 0668  
DDA MELISA 434

FAIRVIEW BAR LAD 4218  
DDA BAR LAD 177U  
DDA HANA 940  
DDA B&T 18K  
DDA MELISA 534  
DDA MELISA 050

I HATE TO SOUND LIKE A BROKEN RECORD, BUT HERE WE GO. ANOTHER GOOD DDA BAR LAD 177U SON. MOTHER HAS WEANED 6 CALVES GRANDMOTHER DDA MELISA 050 HAS WEANED 8 CALVES. THE VERY BOTTOM OF THIS PEDIGREE IS OUR MELISA COW FAMILY, THIS IS THE SAME MELISA COW AS MOTHER TO DDA EMBLAZON 27C AND DDA LODGE E5H.

BW	WT.	WEAN RATIO	SC
74	1006	138	35

HIP HT.	CALVING EASE	TEMP.	UDDER	COW/CALF RATIO
49	3	1	2	58%

**146Z** DDA *Trouble Free* 146Z 06/22/2022 REG: 20643885

N BAR EMULATION EXT  
DIXIE ERICA OF C H 1019  
LODGE OF WYE  
D D A MELISA 824  
SOUTHOLM BAR LAD 50D  
MILLADY OF GRASSY LANES  
H A R PINEBANK 443 202  
DDA MELISA E706

O C C GREAT PLAINS 943G  
DDA GREAT PLAINS 77U  
DDA MELISA E808  
FAIRVIEW BAR LAD 4218  
DDA MELISA 920  
DDA MELISA 759

WHEN WE FILMED THESE BULLS I NOTICED AN INJURY TO ONE OF DDA TROUBLE FREE 146Z EYES. I FEEL COMFORTABLE SAYING IT WILL NEVER GIVE HIM PROBLEMS. HE WILL SELL WITH A GUARANTEE THAT THIS EYE ISSUE WILL NEVER CAUSE ANY PROBLEMS. NOW LOOKING AT HIS PEDIGREE. WOW A SON OF DDA GREAT PLAINS 77U OUT OF BAR LAD 4218. THIS IS THE SAME BAR LAD AS IN DDA BAR LAD 177U. BACK TO A 202 DAUGHTER. ONE MORE GENERATION BACK IS DDA MELISA E706 IS A FULL SISTER TO DDA MELISA E808, THE MOTHER TO DDA GREAT PLAINS 77U. NOT SURE HOW MANY MORE TIMES WE COULD STACK GOOD PROVEN COWS AND BULLS IN THIS PEDIGREE.

BW	WT.	WEAN RATIO	SC
69	837	104	36

HIP HT.	CALVING EASE	TEMP.	UDDER	COW/CALF RATIO
46	3	1	1	57%

**150Z** DDA *Back To The Future* 150Z 06/29/2022 REG: 20655936

SOUTHOLM BAR LAD 50D  
MILLADY OF GRASSY LANES  
BANJO OF WYE UMF 6413  
DIAMOND HENRETTE 368  
PINEBANK WAIGROUP 152/04  
PINEBANK WAIGROUP 92/99  
DDA LODGE E5H  
DDA GRETTE 719

FAIRVIEW BAR LAD 4218  
DDA BAR LAD 177U  
DDA HANA 940  
PINEBANK SE 10D  
DDA GRETTE 9101  
DDA GRETTE 9102

ANOTHER GOOD BAR LAD 177U SON. THE MOTHER TO DDA BACK TO THE FUTURE 150Z WILL WEAN HER 3RD CALF THIS WINTER. GRAND MOTHER DDA GRETTE 9102 WEANED 9 CALVES, SHE ALSO TRACES TO LODGE OF WYE MULTIPLE TIMES.

BW	WT.	WEAN RATIO	SC
78	874	115	34

HIP HT.	CALVING EASE	TEMP.	UDDER	COW/CALF RATIO
47	3	1	1	66%

**200Z** DDA *Commercial* 200Z 06/0/2022 REG: COMMERCIAL

PINEBANK WAIGROUP 41/97  
DDA STELLA 443  
BANJO OF WYE UMF 6413  
DIAMOND HENRETTE 368

H A R PINEBANK 443 202  
DDA ALLIANCE 142V  
DDA DDA HANA 940

DDA COMMERCIAL

WE TYPICALLY WILL NOT OFFER ANY BULLS THAT DO NOT CARRY A REGISTRATION NUMBER. THE 200Z IS THE EXCEPTION BECAUSE I BELIEVE HE IS AN EXCEPTIONALLY GOOD BULL. BY LOOKING AT HIM, MY GUESS WOULD BE THAT HE IS A DDA ALLIANCE 142V SON. HE HAS TREMENDOUS THICKNESS AND DEPTH. NO TRANSFER OF PAPERS.

BW	WT.	WEAN RATIO	SC
-	1000	-	36

HIP HT.	CALVING EASE	TEMP.	UDDER	COW/CALF RATIO
47	3	-	-	-

**215Z** DDA *Alliance* 215Z 05/17/2022 REG: 20757871

PINEBANK WAIGROUP 41/97  
LADY IDA MANNING VOLGA 9708  
DDA ALLY 69C  
DDA STELLA 216  
N BAR EMULATION EXT  
DIXIE ERICA OF C H 1019  
D D A GAHREN 21X  
DDA HOLLY 239

H A R PINEBANK 708 211  
FIX EM 443 211 OF HAGUE 837  
DDA STELLA 443  
O C C GREAT PLAINS 943G  
DDA HOLLY 5103  
DDA HOLLY 664

THE FIXEM 443 211 IS A BULL THAT WE BOUGHT TO REPLACE OUR 202 BULL THAT WAS INJURED A FEW YEARS AGO, HE IS OUT OF THE SAME COW. THE FIXEM 443 211 WAS ALSO INJURED. AS MOST COMMERCIAL CATTLE PRODUCERS KNOW, BEING A BULL IN A MULTI SIRE GROUP IS A ROUGH JOB. THE 215Z DOES CARRY A PAPER AND WILL BE TRANSFERRED. HE LOOKS VERY GOOD.

BW	WT.	WEAN RATIO	SC
74	988	-	34

HIP HT.	CALVING EASE	TEMP.	UDDER	COW/CALF RATIO
48	3	1	1	-



*Special Thank you  
to Dekota and Heather!*



## Beef Image Analysis (BIA) Ultrasound

BIA LIVE ANIMAL CARCASS ULTRASOUND IS AN AUTOMATED, CHUTESIDE SOFTWARE SYSTEM THAT CAPTURES IMAGES AND CALCULATES TRAIT MEASUREMENTS ON AN OBJECTIVE BASIS. THE TRAITS DETERMINED BY BIA ULTRASOUND SOFTWARE ARE:

RIBEYE AREA/HUNDRED LBS LIVE WEIGHT.....REA/CWT  
 RIBEYE SHAPE SCORE.....SHAPE  
 PERCENT INTRAMUSCULAR FAT.....IMF  
 BACKFAT THICKNESS.....BF  
 TENDERNESS SCORE.....TEND

## Ultrasound Explanation

**RIBEYE SHAPE SCORE** - INDICATIVE OF DESIRED SHAPE OF THE RIBEYE MUSCLE. CORRELATED OT EVENTUAL YIELD GRADE. CUTABILITY, AND % RETAIL PRODUCT. SCORE RANGES FROM 0.0 TO 1.0. ACCEPTABLE SCORE IS 0.35 OR GREATER. IDEAL SCORE IS 0.50 OR GREATER.

**TENDERNESS SCORE** - CORRELATED TO ACUTAL WARNER-BRATZLER SHEAR FORCE (WB) IN CARCASS RIBEYE STEAK AT 12TH RIB LOCATION. CORRELATION COEFFICIENTS BETWEEN WB AND TEND CURRENTLY AVERAGE 0.85 - 0.87. SCORE RANGES FROM 10.50.

10 - VERY TENDER

20 - TENDER

30 - SLIGHTLY TENDER

40 - SLIGHTLY TOUGH

50 - TOUGH

IDEAL SCORE IS 25 OR LESS. ACCEPTABLE SCORE IN YEARLING BULLS IS 28 OR LESS.

THE ULTRASOUND DATA ON THE FOLLOWING PAGE IS COLOR CODED. THIS IS TO ASSIST YOU IN ANALYZING THE DATA QUICKLY.

**BLUE** - INDICATES SUPERIOR NUMBERS FOR THAT TRAIT.  
**PURPLE** - INDICATES GOOD NUMBERS FOR THAT TRAIT.  
**WHITE** - INDICATES ACCEPTABLE NUMBERS FOR THAT TRAIT.

# Ultrasound Data

LOT	REA/CWT	SHAPE	IMF	BF	TEND
1Z	1.13	0.47	3.17	0.08	26
2Z	1.05	0.43	3.97	0.10	25
3Z	1.31	0.36	2.48	0.09	26
4Z	1.21	0.45	2.91	0.11	25
5Z	1.42	0.48	2.38	0.08	25
7Z	1.06	0.55	3.70	0.10	26
9Z	1.04	0.55	2.39	0.08	26
11Z	0.98	0.47	2.52	0.08	25
12Z	1.05	0.42	2.28	0.08	27
16Z	1.06	0.47	2.60	0.10	27
17Z	1.19	0.44	3.02	0.08	25
18Z	1.18	0.52	2.41	0.10	25
19Z	1.08	0.37	2.50	0.08	26
21Z	1.13	0.57	2.49	0.09	26
23Z	1.04	0.36	3.13	0.09	25
25Z	0.84	0.39	3.24	0.08	26
26Z	1.17	0.42	2.40	0.09	26
29Z	1.14	0.41	2.87	0.08	26
34Z	1.24	0.40	3.20	0.07	26
35Z	1.15	0.30	2.67	0.09	26
37Z	1.19	0.40	2.79	0.10	26
39Z	1.06	0.47	2.07	0.07	27
40Z	1.03	0.40	3.15	0.09	25
41Z	1.12	0.48	2.17	0.07	26
42Z	1.22	0.52	2.34	0.09	25
43Z	1.15	0.49	2.38	0.10	26
45Z	1.27	0.49	2.82	0.08	26
47Z	1.10	0.54	2.83	0.09	26
48Z	0.95	0.52	2.61	0.10	25
49Z	1.11	0.56	2.93	0.10	25
51Z	1.00	0.33	2.63	0.09	25
52Z	1.39	9.34	2.90	0.07	25
53Z	1.41	0.40	2.30	0.10	25
54Z	1.28	0.40	1.60	0.08	27
55Z	1.03	0.40	2.38	0.09	26
56Z	1.05	0.47	2.96	0.08	26
57Z	1.30	0.67	2.88	0.07	25
59Z	1.18	0.46	3.82	0.09	26
61Z	1.19	0.40	3.00	0.09	25
63Z	1.26	0.48	2.36	0.08	26

LOT	REA/CWT	SHAPE	IMF	BF	TEND
65Z	1.09	0.68	2.33	0.09	26
67Z	0.90	0.90	0.41	0.07	26
69Z	1.41	0.45	2.65	0.08	25
70Z	0.87	0.34	3.21	0.07	25
72Z	1.12	0.50	2.93	0.09	25
74Z	1.28	0.44	2.77	0.09	26
75Z	0.92	0.40	3.07	0.10	25
76Z	1.12	0.54	2.20	0.10	25
77Z	0.93	0.57	1.98	0.08	26
79Z	1.25	0.49	2.61	0.08	25
80Z	1.26	0.42	3.86	0.10	26
83Z	1.20	0.48	2.77	0.08	27
87Z	1.33	0.35	3.14	0.08	25
88Z	1.14	0.44	2.84	0.09	27
92Z	1.33	0.43	2.90	0.24	25
94Z	1.15	0.37	3.13	0.09	25
96Z	0.97	0.52	2.16	0.08	26
98Z	1.11	0.36	3.33	0.09	25
100Z	1.03	0.42	2.67	0.09	25
102Z	0.99	0.43	1.77	0.07	25
106Z	1.03	0.43	3.63	0.09	25
108Z	0.90	0.62	3.67	0.11	26
112Z	0.84	0.52	2.41	0.07	26
115Z	0.91	0.41	2.91	0.08	26
116Z	1.37	0.39	1.71	0.07	26
118Z	1.19	0.38	1.61	0.08	26
120Z	1.50	0.42	2.33	0.08	26
124Z	1.37	0.34	2.76	0.11	25
125Z	1.17	0.38	2.83	0.08	26
128Z	1.30	0.34	2.42	0.08	25
129Z	1.01	0.54	3.18	0.09	25
131Z	1.33	0.38	2.88	0.10	26
134Z	1.26	0.40	3.47	0.07	25
135Z	1.32	0.35	3.08	0.07	25
146Z	1.49	0.43	2.65	0.08	25
150Z	1.27	0.44	3.18	0.09	25
157Z	1.28	0.45	2.93	0.08	25
160Z	1.14	0.47	3.98	0.09	25
200Z	1.18	0.40	2.84	0.10	27
215Z	1.06	0.37	2.51	0.09	26





GREAT DAM TO 215Z



GREAT DAM TO 89Z



GREAT DAM TO 146Z



GREAT DAM TO 160Z



GREAT DAM TO 98Z



GREAT DAM TO 136Z  
DAM TO REFERENCE SIRE 45W



GREAT DAM TO 125Z



GREAT DAM TO 72Z



DAM TO 1Z



DAM TO 51Z



GREAT DAM TO 115Z



DAM TO 9Z



GREAT DAM TO 100Z



GREAT DAM TO 17Z



GREAT DAM TO 59Z



GREAT DAM TO 57Z



GREAT DAM TO 19Z



GREAT DAM TO 98Z



**DIAMOND D ANGUS  
18106 VALIER HWY  
VALIER, MONTANA  
59486**

*Thank You!*