



# **B BAR L**

## **HEREFORD CATTLE, LLC**

**PREDICTABLE, SUSTAINABLE, PROFITABLE**

**PRIVATE TREATY SALE | MARCH 2024**



Learn more at  
[herefordtruth.com](http://herefordtruth.com)

# THE BALD-FACED TRUTH ABOUT HEREFORD GENETICS

**7%**

**Higher pregnancy  
rates**

**\$51**

**More per cow,  
per year**

**\$30**

**Advantage in feedlot  
profitability**

**\$20**

**Advantage in feed  
efficiency**

**Hereford genetics maximize the value of your herd by leveraging traits such as fertility, feed efficiency, docility and feedlot profitability to your advantage.**

\*Compared to Angus-sired calves. Source: Daley, David A. and Early, Sean P. Impacts of Crossbreeding on Profitability in Vertically Coordinated Beef Industry Marketing Systems. American Hereford Association. Retrieved from <https://hereford.org/wp-content/uploads/2017/02/HarrisHeterosisReport.pdf>. 57100C06

# **SALE DAY INFORMATION**

**BULLS WILL BE AVAILABLE MARCH 1, 2023**

## **CONTACT**

LEVI GORSUCH (308) 760-5882

## **DELIVERY**

We will start delivering bulls on April 1st. Free delivery for the first 200 miles. We will accommodate all buyers to the best of our ability.

## **ANNOUNCEMENT**

Available bulls will be listed on our website at: [bbarlherefords.com](http://bbarlherefords.com)

*Buyers who join our email list will be able to preview bulls March 1st.*

*So scan the QR Code below to join the list and stay up to date on B Bar L Herefords!*



## **TERMS & CONDITIONS**

\*In case an adjustment is required, it will be made with a replacement animal of equal value to the animal in question or credit to the purchase of another animal minus the salvage value of the animal in question.

\*No adjustments will be made after seven (7) months of sale day on any animals.

\*Any death or injury after the animal is sold is at the buyer's risk.

## **FEED & CARE**

All animals become property of the purchaser as soon as sold but it shall be the responsibility of the seller to see that animals are properly cared for free of charge, until delivered to the purchaser.

## **SALE PREVIEW**

The sale offering can be viewed at any time prior to March 15. Please call in advance to arrange your visit to view the cattle.

## **SALE TERMS**

All sales are handled by the seller & buyers.

## **BREEDING SOUNDNESS**

All bulls will have passed a breeding soundness exam before sale day. Any bulls that our veterinarian deems not of breeding quality will be pulled from the sale.

## **LIABILITY**

All persons who attend the sale do so at their own risk. B Bar L Hereford Cattle does not assume liability, legal or otherwise, for any accidents, injury, or loss of property.

## **REPEATE BUYER DISCOUNT**

Enjoy 2% off your entire purchase if you have bought B Bar L Hereford bulls in the past.

# EXPLANATION OF BREED EPDS

---

## Calving Ease-Direct (CED)

CE EPD is based on calving ease scores and birth weights and is measured on a percentage. CE EPD indicates the influence of the sire on calving ease in females calving at 2 years of age. For example, if sire A has a CE EPD of 6 and sire B has a CE EPD of 2, then you would expect on average, if comparably mated, sire A's calves would have an 8 percent more likely chance of unassisted calving when compared to sire B's calves.

## Birth Weight (BW)

BW EPD is an indicator trait for calving ease and is measured in pounds. For example, if sire A has a BW EPD of 3.6 and sire B has a BW EPD of 0.6, then you would expect on average, if comparably mated, sire A's calves would come 3 lb. heavier at birth when compared to sire B's calves. Larger BW EPDs usually, but not always, indicate more calving difficulty. The figure in parentheses found after each EPD is an accuracy value or reliability of the EPD.

## Weaning Weight (WW)

WW EPD is an estimate of pre-weaning growth that is measured in pounds. For example, if sire A has a WW EPD of 60 and sire B has a WW EPD of 40, then you would expect on average if comparably mated, sire A's calves would weigh 20 lb. heavier at weaning when compared to sire B's calves.

## Yearling Weight (YW)

YW EPD is an estimate of post-weaning growth that is measured in pounds. For example, if sire A has a YW EPD of 100 and sire B has a YW EPD of 70, then you would expect on average if comparably mated, sire A's calves would weigh 30 lb. heavier at a year of age when compared to sire B's calves.

## Scrotal Circumference (SC)

Measured in centimeters and adjusted to 365 days of age, SC EPD is the best estimate of fertility. It is related to the bull's own semen quantity and quality, and is also associated with age at puberty of sons and daughters. Larger SC EPDs suggest younger age at puberty. Yearling sons of a sire with a 0.7 SC EPD should have yearling scrotal circumference measurements that average 0.7 centimeters (cm) larger than progeny by a bull with an EPD of 0.0 cm.

## Maternal Milk (Milk)

The MM EPD of a sire's daughters is expressed in pounds of calf weaned. It predicts the difference in average weaning weights of sires' daughters' progeny due to milking ability. Daughters of the sire with a +14 MM EPD should produce progeny with 205-day weights averaging 24 lb. more (as a result of greater milk production) than daughters of a bull with a MM EPD of -10 lb. (14 minus -10.0 = 24 lb.). This difference in weaning weight is due to total milk production during the entire lactation.

## Maternal Milk & Growth (M&G)

The M&G EPD reflects what the sire is expected to transmit to his daughters for a combination of growth genetics through weaning and genetics for milking ability. It is an estimate of the daughter's progeny weaning weight. A bull with a 29 lb. M&G EPD should sire daughters with progeny weaning weights averaging 19 lb. heavier than progeny of a bull's daughters with a M&G EPD of 10lb.(29minus10=19lb.). It is equal to one-half the sire's weaning weight EPD, plus all of his MM EPD. No accuracy is associated with this since it is simply a mathematical combination of two other EPDs. It is sometimes referred to as "total maternal" or "combined maternal."

## Carcass Weight (CW)

CW EPD is a beneficial trait when considering the impact that pounds have relative to end product value. At the same age constant endpoint, sires with higher values for carcass weight will add more pounds of hot carcass weight compared to sires with lower values for carcass weight. For example, if sire A has a CW EPD of 84 and sire B has a CW EPD 64, then you would expect the progeny of sire A, if harvested at the same age constant endpoint, to have a 20-lb. advantage in terms of hot carcass weight.

## Ribeye Area (REA)

REA EPDs reflect differences in an adjusted 365-day ribeye area measurement based on carcass measurements of harvested cattle. Sires with relatively higher REA EPDs are expected to produce better muscled and higher percentage yielding slaughter progeny than will sires with lower REA EPDs. Ultrasound measurements are also incorporated into this trait and have been shown to be highly correlated with the performance of slaughter progeny. All data is expressed on a carcass scale.



= TOP 20%



= TOP 10%



= TOP 5%

# EXPLANATION OF BREED INDEXES

## Marbling (Marb)

MARB EPDs reflect differences in an adjusted 365-day marbling score (intramuscular fat, [IMF]) based on carcass measurements of harvested cattle. Breeding cattle with higher MARB EPDs should produce slaughter progeny with a higher degree of IMF and therefore higher quality grades. Ultrasound measurements are also incorporated into this trait and have been shown to be highly correlated with the performance of slaughter progeny. All data is expressed on a carcass scale.

## Certified Hereford Beef Index (\$CHB)

\$CHB is a terminal sire index that is built on a production system where Hereford bulls are mated to mature commercial Angus cows and all progeny will be targeted for Certified Hereford Beef® after the finishing phase. This index has significant weight on Carcass Weight to ensure profit on the rail. As well there is a positive weighting for Average Daily Gain along with a negative weighting on Dry Matter Intake to ensure efficient pounds of growth in the finishing phase. Keep in mind, this production system takes advantage of complimentary breeding with the commercial Angus cow. Although Marbling is weighted positively in this index, a positive weighting for Rib-eye Area and a negative weighting for Back Fat are a greater priority in this index to allow for optimum end-product merit. This is the only index that has no emphasis on fertility. Remember that no replacement heifers are being retained.

## Baldy Maternal Index (\$BMI)

The \$BMI is a maternally focused index that is based on a production system that uses Hereford x Angus cross cows. Progeny of these cows are directed towards Certified Hereford Beef. This index has significant weight on Sustained Cow Fertility, which predicts fertility and longevity of females. There is a slightly positive weight on Weaning Weight, Mature Cow Weight and Milk which accounts for enough growth but ensures females do not increase inputs. There is some negative emphasis on Dry Matter Intake, but a positive weighting on Carcass Weight which is anticipated to provide profitability from finishing of non-replacement females and castrated males. Marbling and Rib-eye Area are also positively weighted to keep the harvested progeny successful for CHB. This index is geared to identify Hereford bulls that will be profitable when used in a rotational cross with mature commercial Angus cows.

## Brahman Influence Index (\$BII)

The \$BII is a maternally focused index that is based on a production system that uses Brahman x Hereford cross cows. Progeny of these cows are directed towards a commodity beef market since Certified Hereford Beef® does not accept Brahman influenced cattle. This index has significant weight on Sustained Cow Fertility, which predicts fertility and longevity of females. There is a slightly positive weight on Weaning Weight, Mature Cow Weight and Milk which accounts for enough growth but ensures females do not increase inputs. There is some negative emphasis on Dry Matter Intake, but a positive weighting on Carcass Weight which is anticipated to provide profitability in finishing non-replacement females and castrated males. Marbling and Rib-eye Area are also positively weighted to keep harvested progeny successful for a variety of commodity based programs. This index targets producers that use Hereford bulls on Brahman influenced cows.





# B BAR L

## HEREFORD CATTLE, LLC

### **Greetings Fellow Cattlemen & Cattlewomen!**

*It is a pleasure to welcome you to our operation to view our 2024 Private Treaty bull offering. We have been working hard to offer predictable, sustainable, and profitable Hereford bulls to our customers. This year is no different, we are very proud of this set of bulls.*

*Our 2024 Private Treaty offering is what we are calling a transition year. Buyers will only see two yearling bulls in the offering this year, as we are transitioning to sell age advantage bulls in 2025. 2023 was our first calving season that we chose to move to March and April. The two yearling bulls being offered are brutes and will have future herd bulls written all over them.*

*Our life revolves around the Hereford breed. Evaluating, culling, and bringing in top quality genetics are all ways we work to improve our herd every year. We strive for a cow herd that is balanced across all traits. Selective breeding for superior genetics allows us to feel confident in our bulls as they go to work for our customers.*

*Our strict attention to nutrition, guided by evidence based feeding programs combines with our exceptional genetics. This well balanced approach to animal health and attention to detail underscores our confidence that our bulls will be maximally productive for our customers. We do not believe in fat bulls. We work closely with our herd-nutritionist throughout all stages of the cattles' lifespan; from conception to the day the bull is delivered to the customer. Our bulls never see a feed wagon as we feed them twice a day by hand from the time they are weaned until they go to summer pasture during their yearling year. The winter of their yearling year they will run on cover crop until shortly after the new year at which point they return to the ranch headquarters where they are fed a high roughage diet by hand. The bulls are intentionally rotated through various terrain and feed regimen throughout their first year in an effort to further the stamina and adaptability that the hereford breed is renowned for.*

*Visitors are always welcome to come walk through the bulls and the cow herd. If we can answer any questions, please reach out to us. We look forward to seeing you all.*



# HERD SIRES

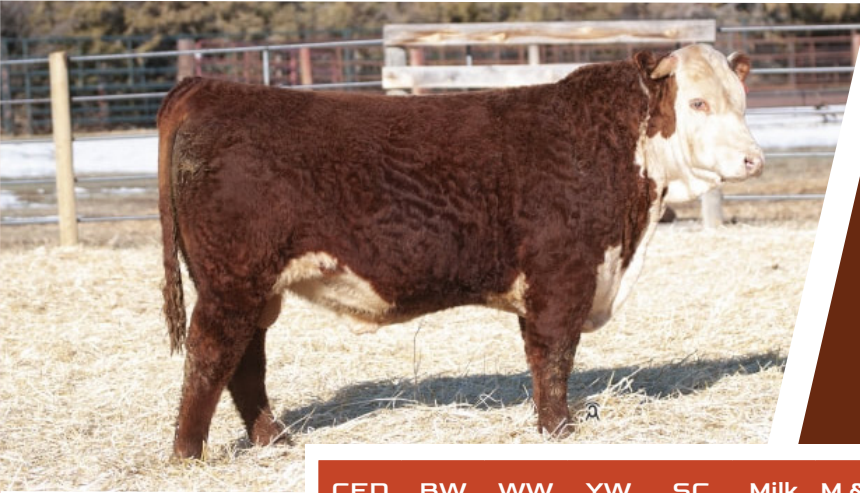
## HH ADVANCE 0046H ET

4 SONS SELL

Reg #: 44130488

DOB: 1/7/20

Horned



HH ADVANCE 286M 1ET (SOD)

X

HH MISS ADVANCE 4050B

CED	BW	WW	YW	SC	Milk	M & G	CW	REA	Marb	\$CHB	\$BMI
-0.8	5.3	70	105	1.6	20	56	77	0.56	0.13	117	382

## SALE BULLS

1

### B BAR L1 ADVANCE 225K

Tag #: 225K

Reg #: 44369722

DOB: 04/10/2022

Horned

HH ADVANCE 286M 1ET HH ADVANCE 0024K  
 HH ADVANCE 0046H ET HH MISS ADVANCE 752G  
 HH MISS ADVANCE 4050B HH ADVANCE 1013Y ET  
 HH MISS ADVANCE 1010Y ET

HH ADVANCE 3297A ET CL 1 DOMINO 091X  
 B BAR L MISS ADVANCE 713E HH MISS ADVANCE 9228W  
 HH MISS ADVANCE 4009B ET CL 1 DOMINO 297Z  
 HH MISS ADVANCE 0663X ET



CED	BW	WW	YW	SC	Milk	M & G	CW	REA	Marb	\$CHB	\$BMI
0.5	4.5	68	109	1.5	28	62	85	0.54	0.17	130	402

225K is a looker with a well balanced EPD's. He is a grandson of our donor cow 4009B. Top 10% in both WW and YW. Top 25% in \$BMI and \$CHB.

BW	98	WW	787	YW	1104
----	----	----	-----	----	------

# 2

## B BAR L1 ADVANCE 229K

Tag #: 229K

Reg #: 44369726

DOB: 04/27/2022 Horned

HH ADVANCE 286M 1ET HH ADVANCE 0024K  
 HH MISS ADVANCE 752G  
**HH ADVANCE 0046H ET**  
 HH MISS ADVANCE 4050B HH ADVANCE 1013Y ET  
 HH MISS ADVANCE 1010Y ET

B BAR L ADVANCE 626D HH ADVANCE 3006A  
 HH MISS ADVANCE 4350B ET  
**B BAR L1 MISS ADVANCE 901G**  
 B BAR L MISS ADVANCE 713E HH ADVANCE 3297A ET  
 HH MISS ADVANCE 4009B ET



CED	BW	WW	YW	SC	Milk	M & G	CW	REA	Marb	\$CHB	\$BMI
-0.3	4.5	62	98	1.6	28	59	75	0.41	0.14	120	374

Here is a moderate framed and easy fleshing 0046 son. Backed by a great cow family.

BW	98	WW	762	YW	902
----	----	----	-----	----	-----

# 3

## B BAR L ADVANCE 219K

Tag #: 219K

Reg #: 44369712

DOB: 03/24/2022 Horned

HH ADVANCE 286M 1ET HH ADVANCE 0024K  
 HH MISS ADVANCE 752G  
**HH ADVANCE 0046H ET**  
 HH MISS ADVANCE 4050B HH ADVANCE 1013Y ET  
 HH MISS ADVANCE 1010Y ET

W L1 DOMINO 625D ET HH ADVANCE 3297A ET  
 CL 1 DOMINETTE 3135A 1ET  
**B BAR L DOMINETTE 917G**  
 ECR 0132 DOMINETTE 3407 HH ADVANCE 0132X  
 ECR 5322 SABRINA 8151



CED	BW	WW	YW	SC	Milk	M & G	CW	REA	Marb	\$CHB	\$BMI
-2.8	5.2	62	102	1.4	26	57	72	0.38	0.11	110	363

Extra long made 0046 son, that will sire a set a baldy calves that will push the scale down.

BW	95	WW	658	YW	1029
----	----	----	-----	----	------

# 4

## B BAR L1 ADVANCE 231K

Tag #: 231K

Reg #: 44369728

DOB: 06/19/2022 Horned

HH ADVANCE 286M 1ET HH ADVANCE 0024K  
 HH MISS ADVANCE 752G  
**HH ADVANCE 0046H ET**  
 HH MISS ADVANCE 4050B HH ADVANCE 1013Y ET  
 HH MISS ADVANCE 1010Y ET

CL 1 DOMINO 744E CL1 DOMINO 5191C 1ET  
 CL1 DOMINETTE 512C  
**HH MISS ADVANCE 9026G**  
 HH MISS ADVANCE 7210E CL 1 DOMINO 420B 1ET  
 HH MISS ADVANCE 4227B



CED	BW	WW	YW	SC	Milk	M & G	CW	REA	Marb	\$CHB	\$BMI
2.9	3.6	72	109	1.8	27	63	75	0.39	0.28	124	357

231K is out of our donor cow 9026G and checks all the boxes. Top 3% WW and Top 10% YW.

BW	95	WW	610	YW	1010
----	----	----	-----	----	------



# HERD SIRE

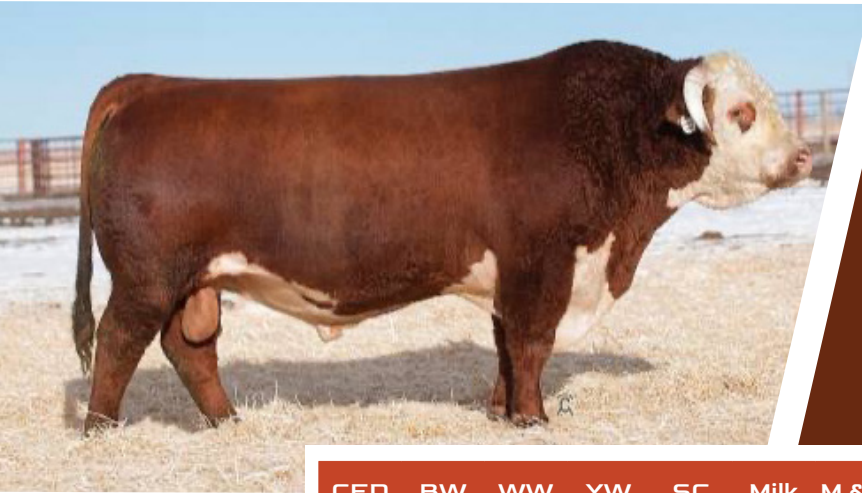
## HH ADVANCE 3006A

3 SONS SELL

Reg #: 43368334

DOB: 12/29/12

Horned



HH ADVANCE 0002X (SOD)

X

HH MISS ADVANCE 1142Y

CED	BW	WW	YW	SC	Milk	M & G	CW	REA	Marb	\$CHB	\$BMI
-1.8	2.5	61	96	2	38	69	69	0.15	0.18	115	321

## SALE BULLS

5

### B BAR L1 ADVANCE 207K ET

Tag #: 207K

Reg #: 44420696

DOB: 02/14/2022

Horned

HH ADVANCE 0002X HH ADVANCE 7026T ET  
HH MISS ADVANCE 8163U  
**HH ADVANCE 3006A**  
HH MISS ADVANCE 1142Y HH ADVANCE 8050U  
HH MISS ADVANCE 9176W ET

HH ADVANCE 7101T HH ADVANCE 4140P  
HH MISS ADVANCE 1121L  
**HH MISS ADVANCE 0299X ET**  
HH MISS ADVANCE 5157R HH ADVANCE 396N  
HH MISS ADVANCE 2146M



CED	BW	WW	YW	SC	Milk	M & G	CW	REA	Marb	\$CHB	\$BMI
2.1	2	55	84	1.6	39	66	80	0.39	0.03	117	355

He has been an eye catcher since birth. Has herd bull written all over him. He is fully pigmented, long sided, and with lots of volume. We used 207K to clean up a small group of registered cows last spring. Trich Tested.

BW	98	WW	670	YW	974
----	----	----	-----	----	-----

**6****B BAR L1 ADVANCE 210K ET**

Tag #: 210K

Reg #: 44420698

DOB: 02/25/2022 Horned

HH ADVANCE 0002X HH ADVANCE 7026T ET  
HH MISS ADVANCE 8163U**HH ADVANCE 3006A**HH MISS ADVANCE 1142Y HH ADVANCE 8050U  
HH MISS ADVANCE 9176W ETHH ADVANCE 7101T HH ADVANCE 4140P  
HH MISS ADVANCE 1121L**HH MISS ADVANCE 0299X ET**HH MISS ADVANCE 5157R HH ADVANCE 396N  
HH MISS ADVANCE 2146M

CED	BW	WW	YW	SC	Milk	M & G	CW	REA	Marb	\$CHB	\$BMI
2.1	2	55	84	1.6	39	66	80	0.4	0.08	126	368

A full ET brother to 207K. These 3006 sons are thick made and can cover ground. He would sire a set of baldy calves that would turn some heads.

BW	98	WW	600	YW	1004
----	----	----	-----	----	------

**7****B BAR L1 ADVANCE 205K ET**

Tag #: 205K

Reg #: 44420697

DOB: 02/11/2022 Horned

HH ADVANCE 0002X HH ADVANCE 7026T ET  
HH MISS ADVANCE 8163U**HH ADVANCE 3006A**HH MISS ADVANCE 1142Y HH ADVANCE 8050U  
HH MISS ADVANCE 9176W ETHH ADVANCE 7101T HH ADVANCE 4140P  
HH MISS ADVANCE 1121L**HH MISS ADVANCE 0299X ET**HH MISS ADVANCE 5157R HH ADVANCE 396N  
HH MISS ADVANCE 2146M

CED	BW	WW	YW	SC	Milk	M & G	CW	REA	Marb	\$CHB	\$BMI
1.3	2.3	53	83	1.5	39	65	72	0.25	0.08	116	358

Another 3006 son that is a full brother to 207K and 210K. He is fully pigmented. Top 3% MM and Top 13% M&G.

BW	98	WW	506	YW	884
----	----	----	-----	----	-----

# HERD SIRE

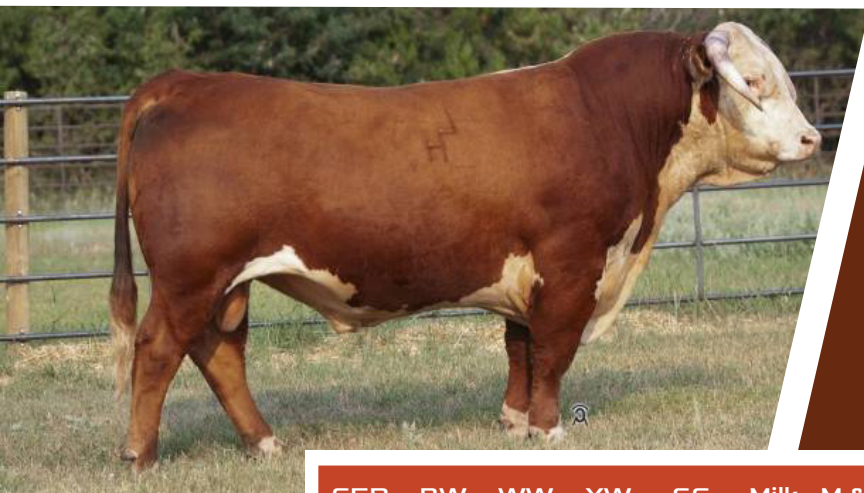
## CL 1 DOMINO 8146F 1ET

1 SON SELLS

Reg #: 43903322

DOB: 1/17/18

Horned



CL 1 DOMINO 6187D

X

CL 1 DOMINETTE 2185Z

CED	BW	WW	YW	SC	Milk	M & G	CW	REA	Marb	\$CHB	\$BMI
7	2	70	107	1.5	27	63	83	0.57	0.42	147	339

## SALE BULLS

8

### B BAR L1 DOMINO 216K

Tag #: 216K

Reg #: 44369706

DOB: 03/11/2022

Horned

CL 1 DOMINO 8146F 1ET  
 CL 1 DOMINO 6187D HH ADVANCE 4067B ET  
 CL 1 DOMINETTE 450B  
 CL 1 DOMINETTE 2185Z CL 1 DOMINO 994W 1ET  
 CL 1 DOMINETTE 966W

HH MISS ADVANCE 4161B  
 HH ADVANCE 1013Y HH ADVANCE 4055P  
 HH MISS ADVANCE 7003T  
 HH MISS ADVANCE 1188Y HH ADVANCE 8050U ET  
 HH MISS ADVANCE 9035W ET



CED	BW	WW	YW	SC	Milk	M & G	CW	REA	Marb	\$CHB	\$BMI
11.8	-0.4	50	80	1.4	28	54	69	0.4	0.4	139	356

A calving ease bull that we used to clean up our spring and fall heifers. Out of 9 year old Holden cow who has a great track record. Top 4% CE and Top 5% in BW and MARB. Trich Tested.

BW	70	WW	540	YW	975
----	----	----	-----	----	-----

# HERD SIRE

## K&B REDBRAND 417B

1 SON SELLS

Reg #: 43530501

DOB: 3/28/14

Polled



CHURCHILL RED BULL 200Z (SOD)

X

K&B BELLA 219Z 1ET (DOD)

CED	BW	WW	YW	SC	Milk	M & G	CW	REA	Marb	\$CHB	\$BMI
0.6	4.2	63	97	1.5	32	63	78	0.36	0.19	134	324

## SALE BULLS

9

### B BAR L REDBRAND 129J ET

Tag #: 129J

Reg #: P44306542

DOB: 09/18/2021

Scurred

CHURCHILL RED BULL 200Z  
K&B REDBRAND 417B

K&B BELLA 219Z 1ET

CHURCHILL SENSATION 028X  
CHURCHILL LADY 002X ET

K&B BANDIDO 8227U ET  
K&B SWEET SALLY 5037

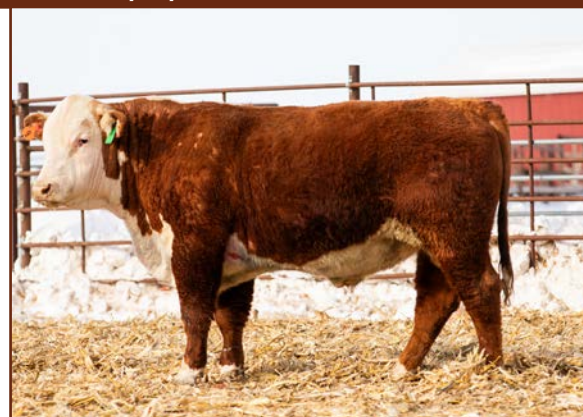
HH ADVANCE 0118X  
CL 1 DOMINETTE 2189Z 1ET

CL 1 DOMINETTE 5142R

CL 1 DOMINO 7128T 1ET  
HH MISS ADVANCE 6074S

CL 1 DOMINO 1172L  
CL 1 DOMINETTE 810H

CED	BW	WW	YW	SC	Milk	M & G	CW	REA	Marb	\$CHB	\$BMI
-2.7	5.5	68	105	1.6	34	68	88	0.52	-0.04	130	265



BW	85	WW	600	YW	1085
----	----	----	-----	----	------

Here is a massive Redbrand son. He is thick topped, has lots of volume, and big butted. Out of a 11 year old donor cow. Top 15% in both WW and YW. 129J bred cows in the Sandhills this past summer. Trich Tested.

# HERD SIRE

## NJW 133A 6589 MANIFEST 87G ET

1 SONS SELL

Reg #: 44057384

DOB: 2/10/19

Polled



/S MANDATE 66589 ET

X

BW NJW 76S 8Y HOMESPUN 133A

CED	BW	WW	YW	SC	Milk	M & G	CW	REA	Marb	\$CHB	\$BMI
12.5	-0.3	66	103	2	31	64	71	0.29	0.25	114	502

## SALE BULLS

### 10 B BAR L MANIFEST 305L

Tag #: 305L

Reg #: 44525013

DOB: 03/09/2023 Horned

/S MANDATE 66589 ET R LEADER 6964  
 /S LADY DOMINO 0158X  
**NJW 133A 6589 MANIFEST 87G ET**  
 BW NJW 76S HOMESPUN 133A NJW 73S W18 HOMETOWN 10Y ET  
 NJW 55N STARDUST 76S

SR BAKKEN 62Z UPS NAVARRO  
 SR SCRIPTIA 926W  
**UU MS BAKKEN 1167J**  
 UU MS DIABLO 6214D SR DIABLO 613A  
 UU MS STERLING 2403



CED	BW	WW	YW	SC	Milk	M & G	CW	REA	Marb	\$CHB	\$BMI
6.6	1.7	66	107	2	38	72	78	0.43	0.21	120	450

BW	87	WW	645	YW	N/A
----	----	----	-----	----	-----

Here is a curve bending Manifest son out a Bakken daughter that we purchased from Van Newkirks. 305L is fully pigmented and checks all the boxes. Calving ease, growth, and maternal.

# HERD SIRE

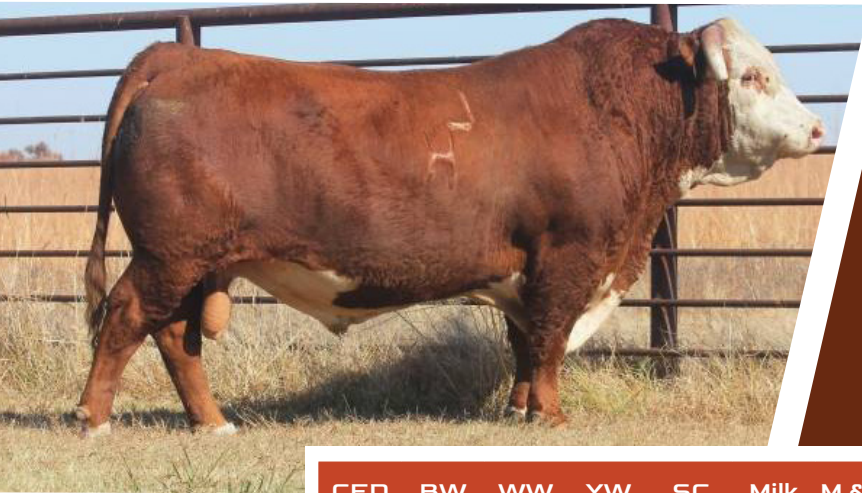
## HH ADVANCE 7143E ET

1 SON SELLS

Reg #: 43787525

DOB: 01/19/17

Horned



HH ADVANCE 3297A ET

X

HH MISS ADVANCE 9176W ET

CED	BW	WW	YW	SC	Milk	M & G	CW	REA	Marb	\$CHB	\$BMI
7.2	1.6	61	94	1.3	32	62	83	0.29	0.23	137	392

## SALE BULLS

# 11

## B BAR L1 ADVANCE 306L ET

Tag #: 306L

Reg #: 44528240

DOB: 03/11/2023

Horned

HH ADVANCE 3297A ET CL 1 DOMINO 091X  
HH MISS ADVANCE 9228W

**HH ADVANCE 7143E ET**

HH MISS ADVANCE 9176W ET HH ADVANCE 4055P  
HH MISS ADVANCE 1088L

L1 DOMINO 03473 L1 DOMINO 01418  
L1 DOMINETTE 95435

**L1 DOMINETTE 06486**

L1 DOMINETTE 99374 L1 DOMINO 96988  
L1 DOMINETTE 96911

CED	BW	WW	YW	SC	Milk	M & G	CW	REA	Marb	\$CHB	\$BMI
2.2	2.7	52	84	1	25	50	64	0.21	0.29	122	362



BW	80	WW	635	YW	N/A
----	----	----	-----	----	-----

This ET bull calf was raised out in the Sandhills and Dad kept telling us 306L was a standout. This bull catches your eye as soon as you step in the pen. He is long and muscular. Out of Holden's power donor cow 06486.

# COMMERCIAL HEIFERS



**12**

## **F1 BLACK BALDY**

Tag #: 300, 301, 302

Reg #: Commercial

DOB: April-May 2023 Polled

**T/D MVP 0672**

**X**

**REG. HEREFORD COWS**

*These heifers sell February 22nd in the Nebraska Cattlemen's Classic at the Buffalo County Fairgrounds in Kearney, NE.*









# HEREFORD ADVANTAGE

Visit

[HerefordAdvantage.com](http://HerefordAdvantage.com)

*to get started today!*



An industry-changing program from the American Hereford Association and IMI Global to verify and add value to Hereford-influenced feeder cattle with superior genetics, health and management.

## REQUIREMENTS

- **Source & Age verification**
- **Genetic merit**
  - Minimum of 50% Hereford genetics
  - Bull battery ranking in top 50% of breed for \$CHB index (bull battery average)
  - Bull ownership transferred (all bulls)
- **Vaccination program – two rounds of vaccinations pre-weaning (minimum)**
  - *Recommended minimum protocol:*

**PrimeVAC**<sup>™</sup> 34  
PREMIUM  
BY MERCK ANIMAL HEALTH

- **BQA certification**

## BENEFITS

- **Genetic improvement tool**
  - **Sire EPD and profit index summary**
- **Added market exposure**
  - **Free listing at [HerefordMarketplace.com](http://HerefordMarketplace.com)**
- **Enrollment cost - \$3.00/hd.**  
**(verification + eID tag)**

Look for this logo in Hereford bull sale catalogs to identify sires meeting the genetic requirements for the Hereford Advantage program.



# THANK YOU!

OUR SALE WOULD NOT BE  
POSSIBLE WITHOUT THE  
HELP FROM OUR FAMILY,  
FRIENDS, AND NEIGHBORS  
WORKING BEHIND THE  
SCENES TO ENSURE THE  
SALE RUNS SMOOTHLY.

*Catalog designed by:*



KROSECOMPANY.COM







**B BAR L**  
HEREFORD CATTLE, LLC



**WE HOPE TO SEE YOU AT NEXT YEAR'S  
PRIVATE TREATY SALE!**

