

BLUFFSIDE

ANGUS

"Business Bulls" Sale Offering

Open House

February 18th, 2024

12:00 pm

**FEATURING SONS OF MARCY'S SCALE CRUSHER, SAV DOUBLE WIDE,
SAV 8180 TRAVELER 004, AND SAV RENOVATION 6822**

First and foremost, thank you for considering us for your seedstock source. It truly means a lot to have the interest. "Thank you" is simply not enough to those who supported me last year. That being said, I would like to extend to you a warm welcome and invite you to evaluate the bulls in this offering. I would love the opportunity to talk to you about the offering and program. I focused the program from the start on quality and always with the idea that if the cows and calves were sold commercially that they would be desirable for a premium. In other words, they are real cattle for a real market. The trends and fads of the industry come and go, but good cattle will always be good cattle. The commercial rancher needs the right type and kind of cattle to sell; not cattle with paper credentials that may or may not reflect their real-world performance and capabilities. I know that it is said often, but the cattle you find here are, indeed, produced with the profit of the commercial rancher in mind. There aren't a lot of bulls, but the ones that are here will serve you well, guaranteed. I stand behind them because both the individuals in the offering and the cows that produced them had to earn their place.

The registered cows and calves run right with my family's commercial cows year-round. They endured the drought this year all the same. The years like this that show the value that genetic selection can have. The calves receive no creep feed - a true testament to what the genetics and our cows can truly do for you. I was extremely satisfied with the both the reproductive performance of the cows and the performance of the calf crop. I believe we have a set of genetics in our cow herd that is well-suited to what we aim to accomplish.

Moving forward, I hope to be a source of reliable, real-world genetics with outcross options for many. The offering will grow in both quantity and quality with your support. I'm already expecting future offerings to be very exciting and hope you will come back and be part of our growth. The investments made in future genetics are always made very deliberately with your needs in mind. Extensive homework is done before making decisions on the genetics to bring to you. Our goal is to deliver pounds across the scale because most, if not all, of you sell in a pounds market. We also religiously select for sound, good-footed cattle. Much of what we offer is also very maternally oriented and our herd's udder quality is something I take seriously and work diligently to perfect.

The cattle business is always challenging, but we are in a time of much enthusiasm. When record prices are gone again, what will continue to carry producers in the black will be their cow herd's reproductive efficiency. We can help you with making excellent cows as well as good feeders. Good cows and calves that gain will take care of you far better than the packing industry will. If you keep replacements, our bulls are well-suited for that purpose. If that's not for you, many heifers by bulls in this sale will be very marketable as replacement quality.

A quick note on the development of the bulls:

We don't finish our bulls; we develop them. One of the highest compliments I received last year was that the bulls were ready to work at delivery. Your bull will look good on sale day, but even better after you get him. We want his best days to be ahead of him! Buy with confidence that you'll like your bull even better at delivery and turnout time!

Thank you again, and I look forward to speaking with you about my passion - quality Angus cattle that can make your management easier and you more profitable!

-Mandi

SUNDAY FEBRUARY 18TH, 2024

Open House & Private Treaty Sale
865 135th Rd Silver Creek, NE 68663
Lunch and cattle viewing to begin at 12 pm

SALE PROCEDURES/OPPORTUNITY TO BID

We hope you can make it to the open house to view the private treaty bulls and visit with us! If you cannot, we HIGHLY encourage you to set up a time prior to February 18th to evaluate the bulls. Base price will be made available the week before the sale and will be on supplement sheets sale day. Buyers may bid in \$100 increments any time after base prices are published until 3pm sale day. Bidders should obtain a bidder number and participate by texting bids to Mandi at 402.366.3889 or place them in person on sale day in silent auction format. At 3pm, bulls with only the base price bid will sell to the interested party and bulls with multiple bids will be bid off as necessary, in catalog order. **Only bulls that have received bids above base price will be bid off.** It is important that you are available by phone at this time if you are absent but wish to have the chance to continue bidding. Please ask if there are questions regarding the sale format. The format is simply to give all serious bull buyers an opportunity at the bull they want as opposed to the "first come first served" method with this limited number of lots. We want you to know that this sale is conducted in a 100% straightforward, transparent manner. Bids are never misused in any way and your trust is of utmost importance to us. Bluffside Angus representatives may be handling bids for absentee bidders.

TERMS & CONDITIONS

All cattle sell under the terms and conditions of the American Angus Association. Payment is expected at time of sale.

LIABILITY

All persons who attend the sale do so at their own risk, and Bluffside Angus assumes no liability, legal or otherwise, for any accidents that occur.

CORRECTIONS

Any corrections and supplemental information will be available on sale day. Any updated information takes precedence over printed information in the sale book.

EPDS & PATHFINDERS

EPDs are current as of January 8, 2024. Pathfinder sires and dams in pedigrees are indicated by the # mark.

VOLUME DISCOUNT

3% discount on purchases of 3+ bulls

HEALTH

All bulls selling have been managed with a comprehensive spring and fall vaccination and parasite control program. They have been vaccinated against foot rot and warts. All bulls have tested negative for BVD-PI. Scrotal measurements will be available on a supplement sheet and bulls will pass a breeding soundness exam before delivery. Health papers will accompany interstate shipments as necessary.

DELIVERY

We would like all bulls to be to their new homes by April 15th. After that, feeding at \$5 per day is available. You can receive a \$200 discount on your bull by taking him home within one week of the sale. Delivery of bulls at no cost is available within 250 miles, and at cost beyond 250 miles. We highly recommend insurance is purchased by the buyer on bulls left to winter with us. See guarantee below and insurance agent information on inside back cover.

FIRST BREEDING SEASON GUARANTEE

All bulls selling for \$3,500 or more will be covered 50% by Bluffside Angus if they are injured during their first breeding season. Breeding season is defined as the 60 day period following first turn out of bulls. All bulls selling for \$3,500 or more will be given 50% of the value of the injured bulls, minus any salvage value, as credit in a future sale up to 2 years from the sale when the bull was purchased or towards a replacement bull if one is available. All injured bulls must be diagnosed by a veterinarian and the diagnosis provided to Bluffside Angus along with proof of salvage value. Please notify us as soon as possible should an injury occur and **prior** to the injured bull being sold for salvage. All claims must be made by September 1, 2024, unless other arrangements have been made with the seller prior to purchase (e.g. turnout for a Fall herd). Our guarantee does not include death, as mortality insurance can be obtained. It also does not cover mismanagement, neglect, illness, foot rot, or conditions beyond Bluffside Angus's control post-sale. It does not cover injuries sustained prior to breeding.
Example 1: A \$6,000 bull sustains a breeding injury that will not heal. A credit of \$3,000 minus any salvage value will be given to the buyer
Example 2: A \$4,000 bull is injured and will not heal. A credit of \$2,000 minus any salvage value will be given to the buyer
Example 3: A \$3,000 bull is injured; no credit is given.

CONTACT MANDI NEUJAHN AT 402-366-3889

1

Bluffside Business 307

Tattoo: 307 Reg: 20794344 DOB: 02/09/2023

SAV Elation 7899
SAV Double Wide 0861
 SAV Blackcap May1808#

Sinclair Emulation XXP#
 SAV Blackcap May 1782
 SAV Net Worth 4200#
 SAV May 2397#

Ox Bow Final Answer1304
Ox Bow Manor 318
 Ox Bow Manor 153

SAV Final Answer0035#
 Ox Bow Forever Lady 966
 MC Cumber 4X13 Extra 7159
 Ox Bow Manor 745

CED	BW	WW	YW	SC	Milk	CW	Marb	RE	Fat
-3	+3	+81	+143	-0.63	+14	+62	+0.39	+0.52	+0.032

ACT BW	97	ADJ 205	740
--------	----	---------	-----



This bull has been asking to lead off the sale since I first saw him get up for the very first time and went on to earn it. A stout, long-bodied, ultra-complete Double Wide son from a no-miss dam who has a calving interval of 9 at 367. He is thick and balanced from front to back with muscle in all the right places. He displayed masculinity from an early age and is extremely docile. Females will be top replacement quality and feeders will be the right kind. Bulls like this are designed for success and will pay for themselves early. He earned his name by putting together so many pieces of what we are striving for. Buy with confidence.

2

Bluffside Double Wide 315

Tattoo: 315 Reg: 20813459 DOB: 03/25/2023

SAV Elation 7899
SAV Double Wide 0861
 SAV Blackcap May1808#

Sinclair Emulation XXP#
 SAV Blackcap May 1782
 SAV Net Worth 4200#
 SAV May 2397#

Marcys 09 Sledgehammer 103-9
Marcys Pride 487#
 Marcys Pride 69

Baldrige Sledgehammer S621
 Marcys 04 Pride 171-4
 Rito 112 of 2536 Rito 616#
 Marcys Pride 290

CED	BW	WW	YW	SC	Milk	CW	Marb	RE	Fat
-4	+3.9	+79	+142	+0.03	+24	+64	+1.24	+0.24	-0.020

ACT BW	ET	ADJ 205	720
--------	----	---------	-----

Lot 2 is an ET calf with added frame and a top marbling EPD from the mating of Double Wide and our donor dam, Marcys Pride 487. The 487 cow has earned her way to the donor pen through her exceptional production record and unique calving ease and marbling combination. Marcys Pride 487 boasted a calving interval of 7 at 364, nursing ratio of 7 @ 104, and IMF ratio of 3 @ 127 and ribeye ratio of 3 @ 100 before entering embryo production. This is the youngest bull in the offering through no fault of his own, but rather a late embryo implant.

Marcys Pride 487



Donor dam of lots 2, 7, & 8

Maternal is a quality, not a quantity



SAV Double Wide 0861
 Sire of lots 1 & 2



Lot 3



The powerful donor dam of lots 3 & 4

Lots 3 & 4 are ET full sibs to our people-popular high-selling bull last year. Scale Crusher genetics are still in high demand for good reason. Scale Crusher has done nothing but live up to his name in our program, and the daughters are productive, good mothers. Excellent feet on the Scale Crusher progeny! Libido on Scale Crusher sons is well-proven to be exceptional: these bulls won't leave your cows open! The donor dam is a beautiful-uddered true power cow who is now deceased. Both these bulls have a tick of added frame and the natural thickness and massive performance that is synonymous with their sire's name; buy the pair to increase consistency and maximize value of your calf crop. Add either bull to any set of cows and add pounds in one generation! They also have excellent dispositions. Lots of bull here!

3 Bluffside Scale Crusher 305
 Tattoo: 305 Reg: 20794847 DOB: 02/08/2023

Sitz Upward 307R# Marcys Scale Crusher Marcys Erica 393#	Connealy Onward# Sitz Henrietta Pride 81M Leachman Right Time# G Mary Erica 118
SAV 707 Rito 9969# SAV Abigale 214 SAV Abigale 914	Rito 707 of Ideal 3407 7075 BR Polly 8077-472 SAV Net Worth 4200# SAV Abigale 8213

CED	BW	WW	YW	SC	Milk	CW	Marb	RE	Fat
+9	+2.7	+76	+138	+1.04	+19	+63	+0.17	+0.65	-0.037

ACT BW	ET	ADJ 205	721
-----------	----	------------	------------

5 Bluffside 8180 Traveler 306
 Tattoo: 306 Reg: 20777108 DOB: 02/08/2023

Sitz Traveler 8180# SAV 8180 Traveler 004 Boyd Forever Lady 8003	GDAR Traveler 71# Sitz Everelda Entense 1137 AAR New Trend# SVF Forever Lady 57D
SAV Final Answer 0035 Ox Bow Manor 451 Ox Bow Manor 327	Sitz Traveler 8180# SAV Emulous 8145 N Bar Emulation EXT# Ox Bow Manor 105

CED	BW	WW	YW	SC	Milk	CW	Marb	RE	Fat
-3	+3.0	+64	+107	+0.61	+35	+40	+0.12	+0.27	+0.067

ACT BW	90	ADJ 205	661
-----------	----	------------	------------

Here's a 004 son that offers some of the breed's top tried and true genetics. He comes from a productive, easy-fleshing, good uddered proven problem-free cow who had our Lot 1 bull last year. Daughters should be hard-working, productive cows.

4 Bluffside Scale Crusher 310
 Tattoo: 310 Reg: 20796633 DOB: 02/12/2023

CED	BW	WW	YW	SC	Milk	CW	Marb	RE	Fat
+1	+4.1	+82	+155	+1.83	+29	+86	-0.06	+0.80	+0.003

ACT BW	ET	ADJ 205	782
-----------	----	------------	------------

Lot 6 is a stout, soggy performance bull recommended for cows. Rancher bull with gentle disposition. Dam is a first calf heifer from a heavy-milking cow family with a lot of performance.



6 Bluffside Eldorado 311
 Tattoo: 311 Reg: 20834137 DOB: 02/15/2023

Baldrige Bronc# Baldrige Eldorado E050 Baldrige Pratissa W165	EF Commando 1366# Baldrige Isabel Y69 GAR-EGL Protege# Baldrige Pratissa S4 Rito 707 of Ideal 3407 7075
SAV Resource 1441# MN Emblynette Diamond 103 JJR Emblynette Diamond 5849	SAV Blackcap May 4136 SAV Momentum 9274 SAV Emblynette Diamond 8517

CED	BW	WW	YW	SC	Milk	CW	Marb	RE	Fat
+0	+3.6	+82	+150	+1.36	+30	+62	+0.53	+0.45	+0.024

ACT BW	94	ADJ 205	741
-----------	----	------------	------------



SAV Renovation 6822
Sire of lots 7 & 8

Lot 7

HEIFER BULL

Lots 7 & 8 are SAV Renovation sons from Marcy's Pride 487. These bulls are soft and balanced with breed character. Lot 7 is suitable for heifers and is quite a bit better on performance than his WW suggests. His recip dam wouldn't win any milking awards, but his donor dam would! He deserves a good look. SAV Renovation semen is limited. Renovation progeny topped many sales last year and continue to be sought after because he reliably produces attractive, functional sons and daughters. These bulls are solid, well-rounded herd bull prospects.

7 Bluffside Renovation 308
 Tattoo: 308 Reg:20823003 DOB: 02/09/2023

SAV Renown 3439#	Rito 707 of Ideal 3407 7075
SAV Renovation 6822	SAV Blackcap May 4136
SAV Madam Pride 0151	SAV 004 Density 4336#
	SAV Madame Pride 0075
Marcys 09 Sledgehammer 103-9	Baldrige Sledgehammer S621
Marcys Pride 487#	Marcys 04 Pride 171-4
Marcys Pride 69	Rito 112 of 2536 Rito 616#
	Marcys Pride 290

9 Bluffside Panhandle 313
 Tattoo: 313 Reg: 20836609 DOB: 03/12/2023

Marcys 17 Scale Crusher 34-7	Marcys Scale Crusher
Marcys Panhandle 214-9	Marcys 13 Ethelda E4-3
Marcys 12 Ethelda E 64-2	Connealy Consensus 7229#
	Marcys 10 Ethelda E 165-0
SAV Rainfall 6846	Coleman Charlo 0256#
MN Miss Emblynette 0841	SAV Blackcap May 4136
MAK Miss Emblynette 7841	SAV Final Answer 0035#
	JJR Emblynette Diamond 5841

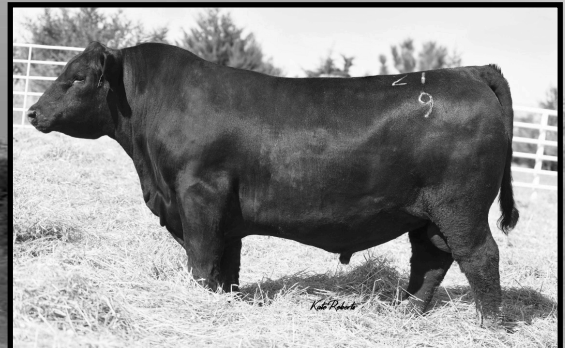
CED	BW	YW	YW	SC	Milk	CW	Marb	RE	Fat
+6	+1.3	+65	+118	+1.10	+22	+45	+0.74	+0.21	+0.060
ACT BW	ET	ADJ 205	602						

CED	BW	YW	YW	SC	Milk	CW	Marb	RE	Fat
+2	+2.7	+73	+125	+1.39	+29	+67	+0.66	+0.56	+0.043
ACT BW	86	ADJ 205	674						

8 Bluffside Renovation 309
 Tattoo: 309 Reg: 20823004 DOB: 02/11/2023

CED	BW	WW	YW	SC	Milk	CW	Marb	RE	Fat
+1	+2.9	+72	+118	+0.82	+30	+50	+0.97	-0.01	+0.059
ACT BW	ET	ADJ 205	649						

Nicely-patterned slightly more moderate, deep bodied, & big-topped bull from a Rainfall dam. This bull will offer you a great value and will be one you'll really appreciate more when you turn him out due to his slightly younger age.



Marcys Panhandle 214-9, top selling bull in the 2021 Marcy sale
Sire of lot 9

Please bring this catalog with you sale day

THE FUTURE OF THE PROGRAM:

We are so grateful we were able to acquire our resident herd sire, Koupal's B&B Real Mccoy last year during the 2023 sale season. He was a carefully considered investment based on our herd visits and research leading to such high confidence that he will deliver exceptional value to our customers. We are excited to build a cow herd utilizing his many desirable attributes and unique pedigree. Contact Sire Buyer at info@sirebuyer.com or myself for semen and come see us next year when we offer his first progeny!



For your convenience, the following insurance information is provided:

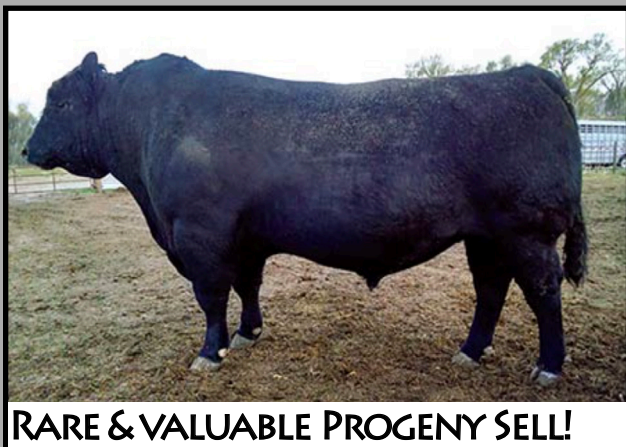


www.insuremybull.com

David Yackley-Creek Insurance-110 E Main Street-Henderson, TN 38340
731-879-3080 or 360-266-8000



MATERNAL EXCELLENCE. DEPENDABLE PERFORMANCE. BLUFFSIDE DIFFERENCE



BLUFFSIDE ANGUS

SILVER CREEK, NE
MANDI NEUJHR, DVM
402.366.3889

WWW.BLUFFSIDEANGUS.COM